



Persona Homes

by Home Group

BOWLERS COURT

CHELMSFORD, ESSEX

2 bedroom apartments

Spacious open-plan two-bedroom apartments with a balcony



Contact us:

T: 0800 030 8888

E: contactus@yourpersonahome.com

W: yourpersonahome.com

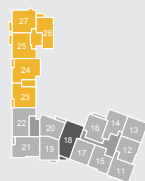
73B Springfield Road, Chelmsford Essex, CM2 6JG



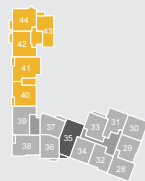
The Margaretting – Plots 18, 35, 52

2-bedroom apartments

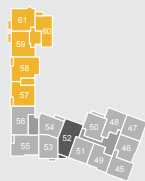
Kitchen	3.48m x 2.87m
Living/Dining Room	3.75m x 4.63m
Master bedroom	2.99m x 4.37m
Bedroom 2	3.86m x 2.41m
Total Area	71.4m ²



First floor

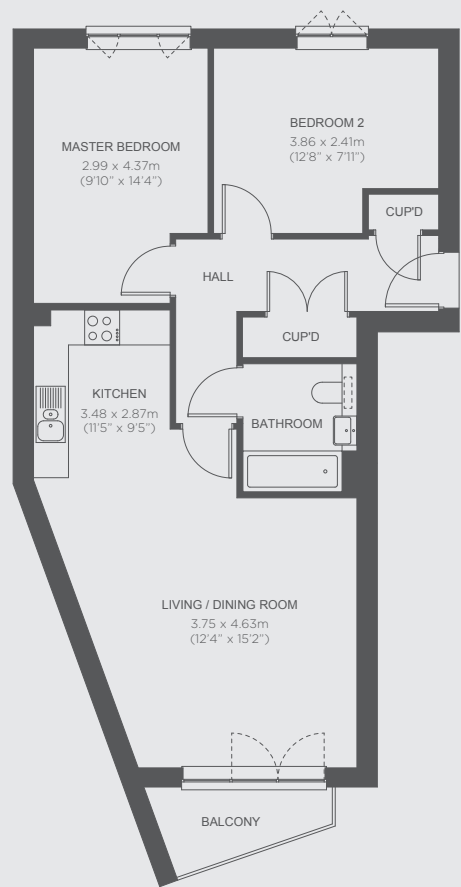


Second floor



Third floor

Plots available for affordable rent. Shared ownership.



Any floor plans are a general outline of the layout of the property for guidance only. All measurements are approximate and may vary and any intending purchasers should not rely on them as statements of fact or representations of fact but must satisfy themselves by inspection or otherwise as to their accuracy. Dimensions shown are not intended to be relied upon for installation of appliances or items of furniture or otherwise. CGI's and images are for illustrative purposes only. Specifications are subject to change. Images are indicative only and may be of previous developments.