



Persona Homes

by Home Group

BEACONFIELD RISE

Marske-by-the-Sea,

Braxton

One of our largest 3-bedroom homes, the Braxton comes with a little bit more.

This home is bright and airy with spacious rooms, many of which feature dual aspect. The open-plan kitchen and dining room is sure to be the heart of the home. With three bedrooms, including an en-suite in the main bedroom, a modern family bathroom, and a convenient laundry room, there's plenty of space for everyone to enjoy!



Contact us:

T: 0800 030 8888

E: contactus@yourpersonahome.com

W: yourpersonahome.com

Marske-by-the-Sea, TS11 8LB

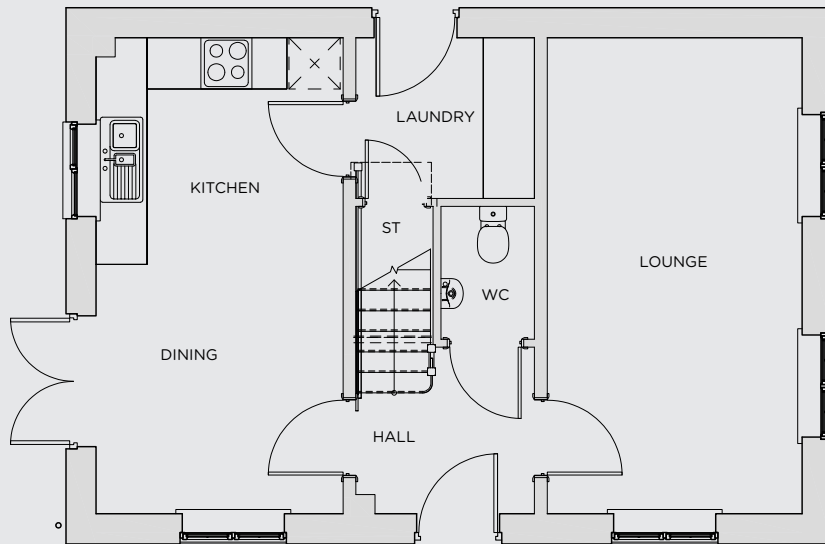
Ground floor

Lounge	2.99m x 5.58m
Kitchen	2.90m x 2.65m
Dining	2.90m x 2.92m
Laundry	2.09m x 1.88m

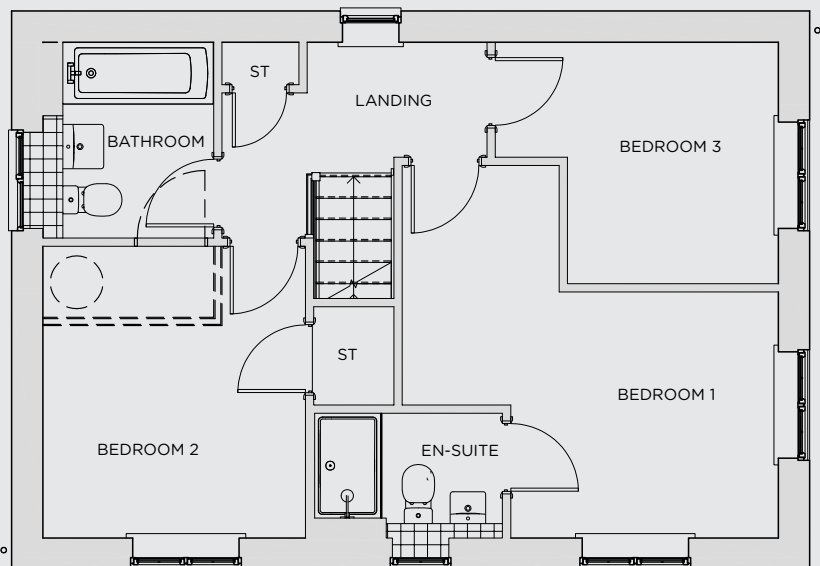
First floor

Main bedroom	3.01m x 2.77m
En-suite	2.11m x 1.24m
Bedroom 2	2.95m x 3.28m
Bedroom 3	3.19m x 2.72m
Bathroom	1.70m x 2.20m
Total Area	92.53m²

Ground floor



First floor



Any floor plans are a general outline of the layout of the property for guidance only. All measurements are approximate and may vary and any intending purchasers should not rely on them as statements of fact or representations of fact but must satisfy themselves by inspection or otherwise as to their accuracy. Dimensions shown are not intended to be relied upon for installation of appliances or items of furniture or otherwise. CGI's and images are for illustrative purposes only. Specifications are subject to change. Images are indicative only and may be of previous developments.*Journey times and distances taken from google.com/ maps and are correct before going to print. All times and distances listed are approximate and may vary depending on time of travel.



Persona Homes

by Home Group

BEACONFIELD RISE

Marske-by-the-Sea

Kirkwood

One of our larger 4-bedroom homes, the Kirkwood offers a little bit extra.

The spacious kitchen, dining, and family room span the entire width of the property, and is sure to be the heart of the home. While a separate living room gives you space to relax and unwind after a busy day. With four bedrooms, a family bathroom, and an en-suite to the main bedroom, this home offers ample space for comfortable living. These lovely homes also feature a garage for added convenience!



Contact us:

T: 0800 030 8888

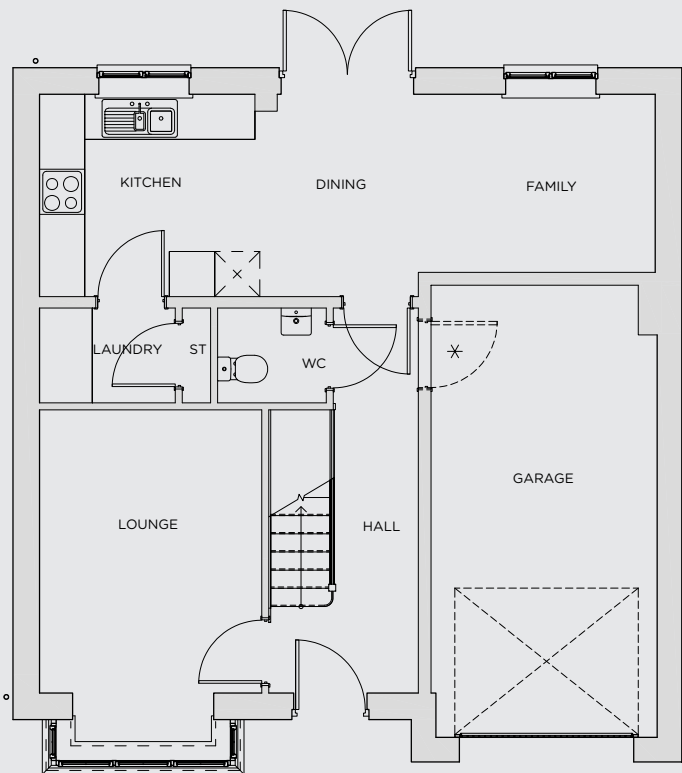
E: contactus@yourpersonahome.com

W: yourpersonahome.com

Marske-by-the-Sea, TS11 8LB

Ground floor

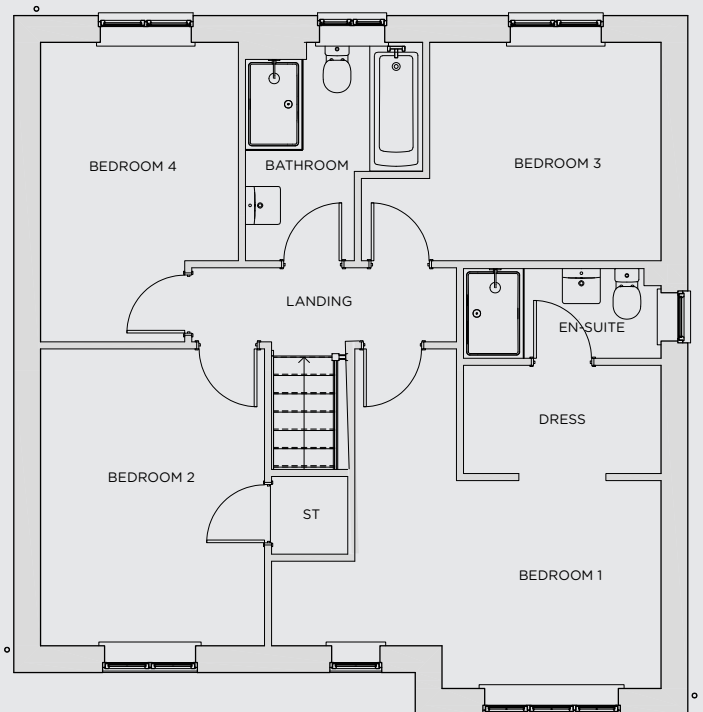
Lounge	2.95m × 4.43m
Kitchen	2.86m × 2.68m
Laundry	1.8m × 1.26m
Dining	2.16m × 2.68m
Family	3.14m × 2.36m



Ground floor

First floor

Main bedroom	4.03m × 2.75m
En-suite	2.6m × 1.18m
Dressing	2.6m × 1.42m
Bedroom 2	2.95m × 3.91m
Bedroom 3	3.04m × 2.87m
Bedroom 4	2.6m × 3.94m
Bathroom	2.33m × 2.87m
Total Area	115.2m ²



First floor



Any floor plans are a general outline of the layout of the property for guidance only. All measurements are approximate and may vary and any intending purchasers should not rely on them as statements of fact or representations of fact but must satisfy themselves by inspection or otherwise as to their accuracy. Dimensions shown are not intended to be relied upon for installation of appliances or items of furniture or otherwise. CGI's and images are for illustrative purposes only. Specifications are subject to change. Images are indicative only and may be of previous developments. Journey times and distances taken from google.com/maps and are correct before going to print. All times and distances listed are approximate and may vary depending on time of travel.



Persona Homes

by Home Group

BEACONFIELD RISE

Marske-by-the-Sea

Skywood

This 4-bedroom home certainly packs a punch!

The Skywood has a lovely open-plan kitchen/dining room with a conveniently located laundry room just off from the room. With 4 bedrooms, an en-suite to the main bedroom, a family bathroom and an integral garage, we can see why this home has been a popular choice.



Contact us:

T: 0800 030 8888

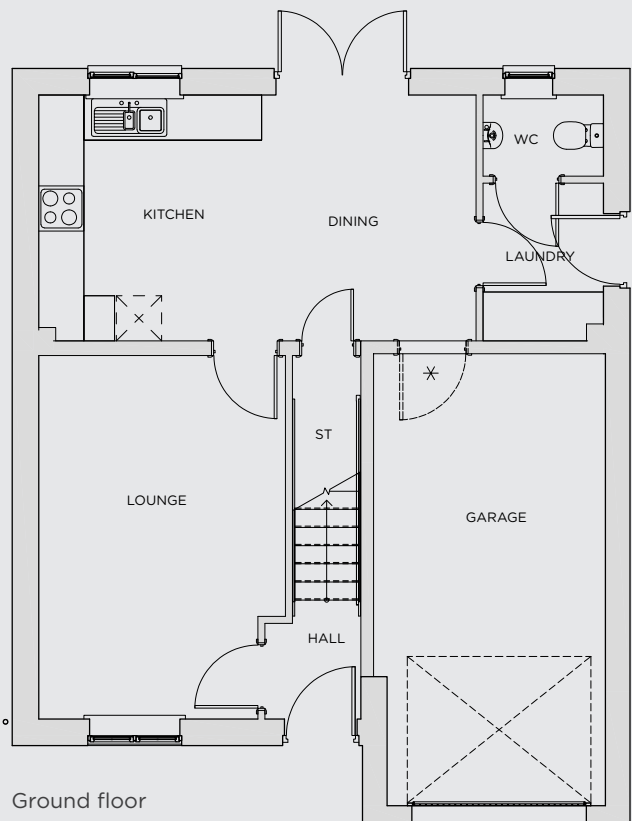
E: contactus@yourpersonahome.com

W: yourpersonahome.com

Marske-by-the-Sea, TS11 8LB

Ground floor

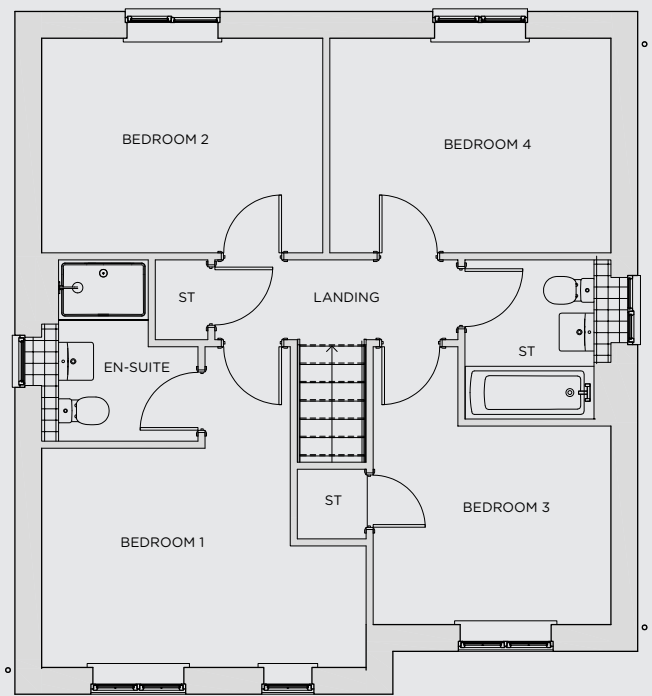
Lounge	3.27m x 4.82m
Kitchen	2.95m x 3.26m
Laundry	1.60m x 2.09m
Dining	2.84m x 3.26m



Ground floor

First floor

Main bedroom	4.27m x 2.88m
En-suite	1.83m x 2.38m
Bedroom 2	3.70m x 2.82m
Bedroom 3	3.13m x 2.61m
Bedroom 4	3.70m x 2.82m
Bathroom	1.70m x 2.09m
Total Area	106.28m ²



First floor



Any floor plans are a general outline of the layout of the property for guidance only. All measurements are approximate and may vary and any intending purchasers should not rely on them as statements of fact or representations of fact but must satisfy themselves by inspection or otherwise as to their accuracy. Dimensions shown are not intended to be relied upon for installation of appliances or items of furniture or otherwise. CGI's and images are for illustrative purposes only. Specifications are subject to change. Images are indicative only and may be of previous developments.*Journey times and distances taken from google.com/ maps and are correct before going to print. All times and distances listed are approximate and may vary depending on time of travel.



Persona Homes

by Home Group

BEACONFIELD RISE

Marske-by-the-Sea

Whitton

Discover the Whitton, a great 3-bedroom home that's designed for family living.

The Whitton has a great open-plan kitchen/dining room and a generous living room that will be the real heart to the home. Add to this three bedrooms, a modern bathroom and handy downstairs cloakroom, there is enough room for the whole family.



Contact us:

T: 0800 030 8888

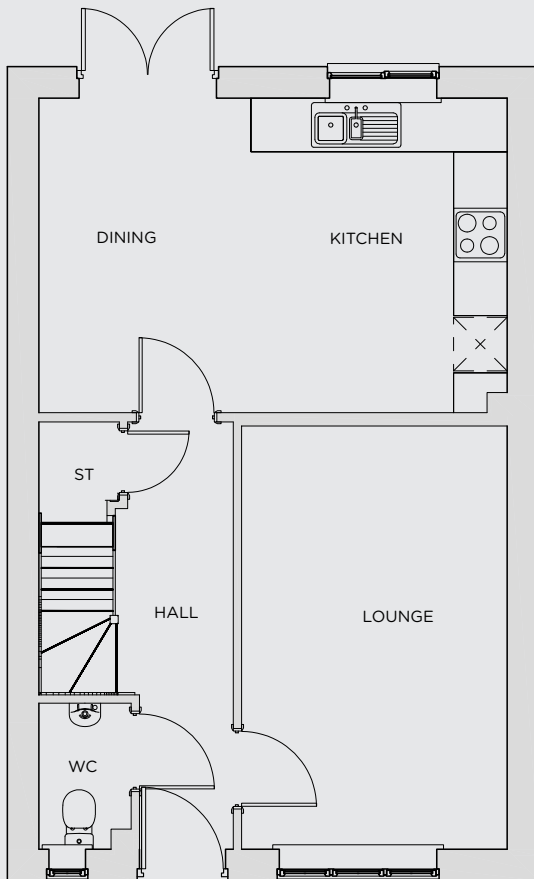
E: contactus@yourpersonahome.com

W: yourpersonahome.com

Marske-by-the-Sea, TS11 8LB

Ground floor

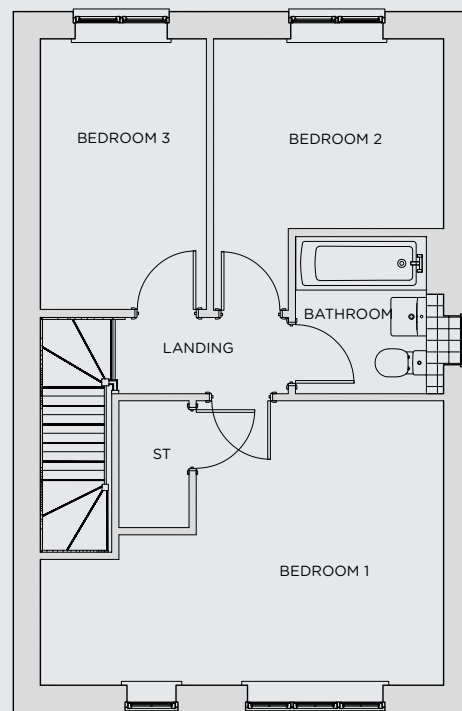
Lounge	2.96m × 4.73m
Kitchen	2.86m × 3.51m
Dining	2.37m × 3.51m



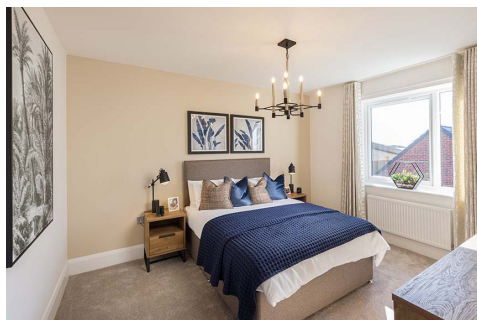
Ground floor

First floor

Main bedroom	3.21m × 3.69m
En-suite	1.92m × 1.95m
Bedroom 2	2.98m × 2.46m
Bedroom 3	2.15m × 3.51m
Bathroom	1.7m × 2.04m
Total Area	87.99m ²



First floor



Any floor plans are a general outline of the layout of the property for guidance only. All measurements are approximate and may vary and any intending purchasers should not rely on them as statements of fact or representations of fact but must satisfy themselves by inspection or otherwise as to their accuracy. Dimensions shown are not intended to be relied upon for installation of appliances or items of furniture or otherwise. CGI's and images are for illustrative purposes only. Specifications are subject to change. Images are indicative only and may be of previous developments.*Journey times and distances taken from google.com/ maps and are correct before going to print. All times and distances listed are approximate and may vary depending on time of travel.