



Persona Homes

by Home Group

BOWLERS COURT

CHELMSFORD, ESSEX

1 bedroom apartments

Spacious one-bedroom open-plan apartments, located in the heart of Chelmsford



Contact us:

T: 0800 030 8888

E: contactus@yourpersonahome.com

W: yourpersonahome.com

73B Springfield Road, Chelmsford Essex, CM2 6JG



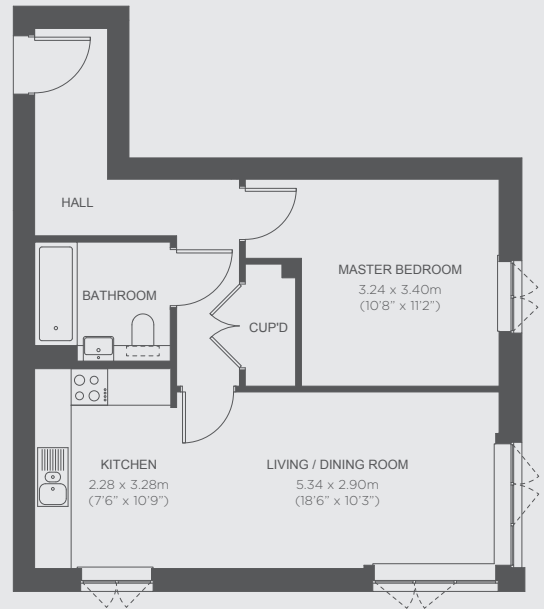
The Waltham - Plots 1, 11, 28, 45

1-bedroom apartments

Kitchen	2.28m x 3.28m
Living/Dining Room	5.34m x 2.90m
Master bedroom	3.24m x 3.40m
Total Area	53m²



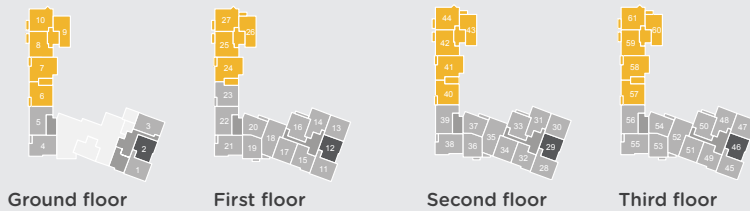
■ Plots available for affordable rent. ■ Shared ownership.



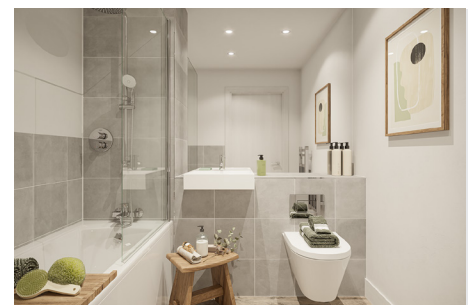
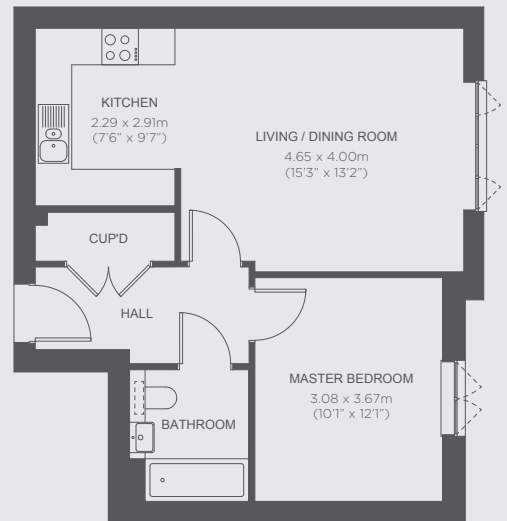
The Galleywood - Plots 2, 12, 29, 46

1-bedroom apartments

Kitchen	2.29m x 2.91m
Living/Dining Room	4.65m x 4.00m
Master bedroom	3.08m x 3.67m
Total Area	50.2m²



■ Plots available for affordable rent. ■ Shared ownership.



Any floor plans are a general outline of the layout of the property for guidance only. All measurements are approximate and may vary and any intending purchasers should not rely on them as statements of fact or representations of fact but must satisfy themselves by inspection or otherwise as to their accuracy. Dimensions shown are not intended to be relied upon for installation of appliances or items of furniture or otherwise. CGI's and images are for illustrative purposes only. Specifications are subject to change. Images are indicative only and may be of previous developments.