



Persona Homes

by Home Group

CLOCK HOUSE

WATFORD

1 bedroom apartments

A collection of one-bedroom apartments available through shared ownership in Watford.

These homes are perfectly placed with a wide range of amenities nearby and Watford High Street overground station less than ten minutes away.*

Placed on the High Street, Clock House offers modern apartments ideal for young professionals and couples looking to take their first step on the property ladder.

With a variety of layouts to choose from, there is something for every taste.



Contact us:

T: 0800 030 8888

E: contactus@yourpersonahome.com

W: yourpersonahome.com

Wellstones, Watford, WD17 2AF

Type A
Plots 1.1*, 1.7, 1.8, 2.7, 3.7, 4.7
1 bedroom apartments

First floor

Living / Dining room	4.59m x 3.28m
Kitchen	2.33m x 3.28m
Bedroom 1	3.39m x 3.59m
Total Area	49 m ²



Type B
Plots 1.9, 2.9, 3.9, 4.9
1 bedroom apartments

First, second, third
and fourth floor

Living / Dining room	4.18m x 3.69m
Kitchen	2.36m x 3.63m
Bedroom 1	3.08m x 3.37m
Total Area	52.5 m ²



* Mirrored layout



Any floor plans are a general outline of the layout of the property for guidance only. All measurements are approximate and may vary and any intending purchasers should not rely on them as statements of fact or representations of fact but must satisfy themselves by inspection or otherwise as to their accuracy. Dimensions shown are not intended to be relied upon for installation of appliances or items of furniture or otherwise. CGI's and images are for illustrative purposes only. Specifications are subject to change. Images are indicative only and may be of previous developments.*Journey times and distances taken from google.com/ maps and are correct before going to print. All times and distances listed are approximate and may vary depending on time of travel.



Persona Homes

by Home Group

CLOCK HOUSE

WATFORD

2 bedroom homes

*A collection of two-bedroom apartments available through shared ownership in Watford.
These homes are perfectly placed with a wide range of amenities nearby
and Watford High Street overground station less than ten minutes* away.*

Placed on the High Street, Clock House offers modern apartments ideal for young professionals and couples looking to take their first step on the property ladder.

With a variety of layouts to choose from, there is something for every taste.



Contact us:

T: 0800 030 8888

E: contactus@yourpersonahome.com

W: yourpersonahome.com

Wellstones, Watford, WD17 2AF

Type A
Plots 3.1*, 3.6, 3.8, 4.1*,
4.2*, 4.6, 4.8
2 bedroom apartments

Third & fourth floor

Living / Dining room	3.08m x 4.51m
Kitchen	3.28m x 2.35m
Bedroom 1	3.07m x 4.94m
Bedroom 2	2.29m x 3.07m
Total Area	60.8 m ²



Type B
Plots 3.5 & 4.5
2 bedroom apartments

Third and fourth floor

Living / Dining room	3.05m x 4.26m
Kitchen	3.28m x 2.36m
Bedroom 1	3.04m x 4.30m
Bedroom 2	2.31m x 3.08m
Total Area	64.6 m ²



* Mirrored layout



Any floor plans are a general outline of the layout of the property for guidance only. All measurements are approximate and may vary and any intending purchasers should not rely on them as statements of fact or representations of fact but must satisfy themselves by inspection or otherwise as to their accuracy. Dimensions shown are not intended to be relied upon for installation of appliances or items of furniture or otherwise. CGI's and images are for illustrative purposes only. Specifications are subject to change. Images are indicative only and may be of previous developments.*Journey times and distances taken from google.com/ maps and are correct before going to print. All times and distances listed are approximate and may vary depending on time of travel.

Type C
Plots 4.3, 5.3
2 bedroom apartments

Fourth & fifth floor

Living / Dining room	3.08m x 4.22m
Kitchen	2.42m x 3.35m
Bedroom 1	3.03m x 4.32m
Bedroom 2	2.30m x 2.99m
Total Area	60 m ²



Type D
Plots 4.4 & 5.4
2 bedroom apartments

Fourth & fifth floor

Living / Dining room	3.07m x 4.24m
Kitchen	2.40m x 3.35m
Bedroom 1	3.03m x 4.28m
Bedroom 2	2.30m x 2.99m
Total Area	59.8 m ²

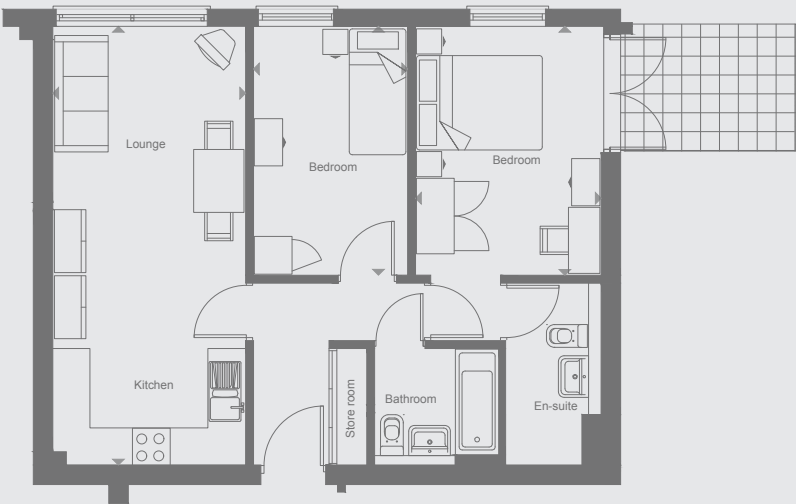


Any floor plans are a general outline of the layout of the property for guidance only. All measurements are approximate and may vary and any intending purchasers should not rely on them as statements of fact or representations of fact but must satisfy themselves by inspection or otherwise as to their accuracy. Dimensions shown are not intended to be relied upon for installation of appliances or items of furniture or otherwise. CGI's and images are for illustrative purposes only. Specifications are subject to change. Images are indicative only and may be of previous developments.*Journey times and distances taken from google.com/ maps and are correct before going to print. All times and distances listed are approximate and may vary depending on time of travel.

Type E
Plots 5.1** & 5.6
2 bedroom apartments

Fifth floor

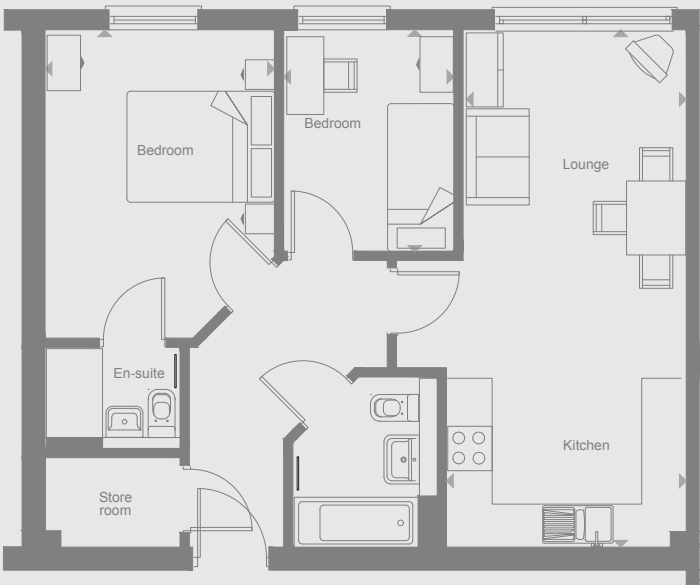
Living / Dining room	3.06m x 6.97m
Bedroom 1	2.95m x 3.96m
Bedroom 2	2.45m x 3.95m
Total Area	60.6 m ²



Type F
Plot 5.2
2 bedroom apartment

Fifth floor

Living / Dining room	3.24m x 6.99m
Bedroom 1	3.10m x 4.17m
Bedroom 2	2.30m x 3.10m
Total Area	60.6 m ²



**Mirrored layout. This plot doesn't include deck.



Any floor plans are a general outline of the layout of the property for guidance only. All measurements are approximate and may vary and any intending purchasers should not rely on them as statements of fact or representations of fact but must satisfy themselves by inspection or otherwise as to their accuracy. Dimensions shown are not intended to be relied upon for installation of appliances or items of furniture or otherwise. CGI's and images are for illustrative purposes only. Specifications are subject to change. Images are indicative only and may be of previous developments.*Journey times and distances taken from google.com/ maps and are correct before going to print. All times and distances listed are approximate and may vary depending on time of travel.

Type G
Plot 5.5
2 bedroom apartment

Fifth floor

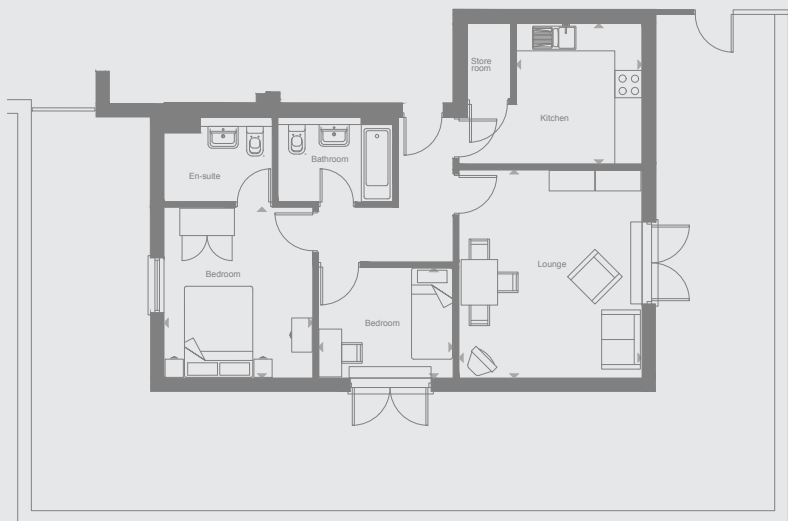
Living / Dining room	3.56m x 6.74m
Bedroom 1	3.10m x 4.17m
Bedroom 2	2.30m x 2.99m
Total Area	64.7 m ²



Type H
Plot 6.1
2 bedroom apartment

Sixth floor

Living / Dining room	4.02m x 4.57m
Kitchen	2.76m x 3.09m
Bedroom 1	3.27m x 3.75m
Bedroom 2	2.96m x 2.42m
Total Area	68.6 m ²



Any floor plans are a general outline of the layout of the property for guidance only. All measurements are approximate and may vary and any intending purchasers should not rely on them as statements of fact or representations of fact but must satisfy themselves by inspection or otherwise as to their accuracy. Dimensions shown are not intended to be relied upon for installation of appliances or items of furniture or otherwise. CGI's and images are for illustrative purposes only. Specifications are subject to change. Images are indicative only and may be of previous developments.*Journey times and distances taken from google.com/ maps and are correct before going to print. All times and distances listed are approximate and may vary depending on time of travel.

Type I

Plot 6.2

2 bedroom apartment

Sixth floor

Living / Dining room	4.55m x 4.65m
Kitchen	3.13m x 2.44m
Bedroom 1	3.61m x 3.45m
Bedroom 2	2.97m x 3.45m
Total Area	77.5 m ²



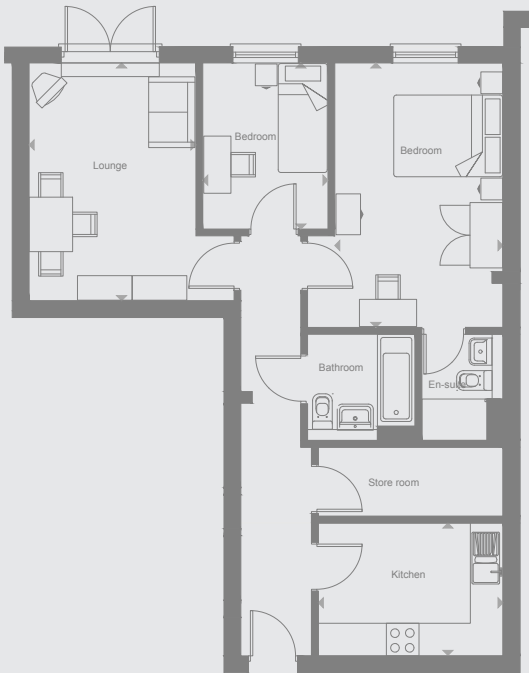
Type J

Plot 6.3

2 bedroom apartment

Sixth floor

Living / Dining room	3.06m x 4.36m
Kitchen	3.39m x 2.43m
Bedroom 1	3.09m x 4.86m
Bedroom 2	2.30m x 3.05m
Total Area	69.4m ²



Any floor plans are a general outline of the layout of the property for guidance only. All measurements are approximate and may vary and any intending purchasers should not rely on them as statements of fact or representations of fact but must satisfy themselves by inspection or otherwise as to their accuracy. Dimensions shown are not intended to be relied upon for installation of appliances or items of furniture or otherwise. CGI's and images are for illustrative purposes only. Specifications are subject to change. Images are indicative only and may be of previous developments.*Journey times and distances taken from google.com/ maps and are correct before going to print. All times and distances listed are approximate and may vary depending on time of travel.