



Persona Homes

by Home Group

MAPLE

BISHOP'S STORTFORD

4-bedroom house

A home that is sure to impress, and one you will want to show off.
Two bathrooms, an en-suite, study and so much more.



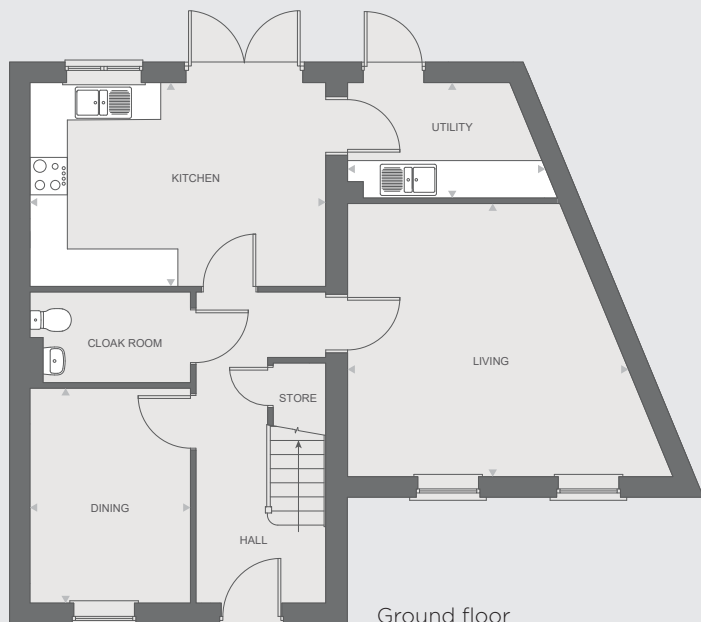
Contact us:

T: 0800 030 8888

E: contactus@yourpersonahome.com

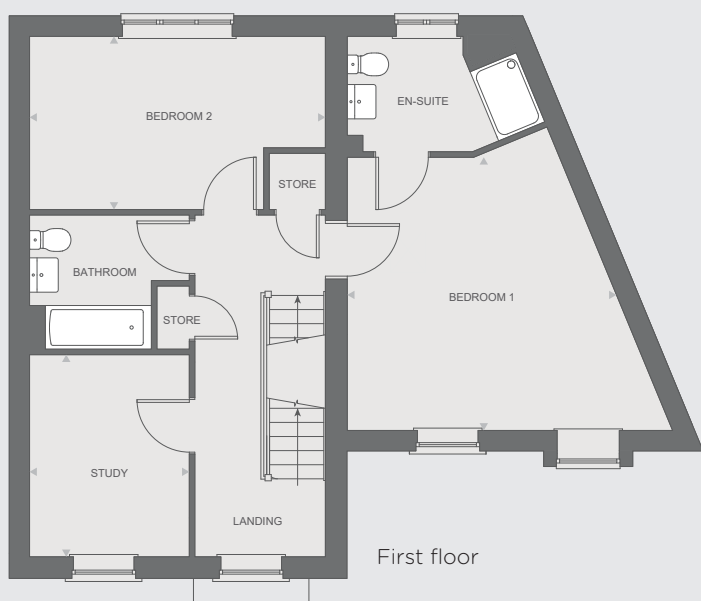
W: yourpersonahome.com

Newman Close, Bishop's Stortford, CM23 2WL



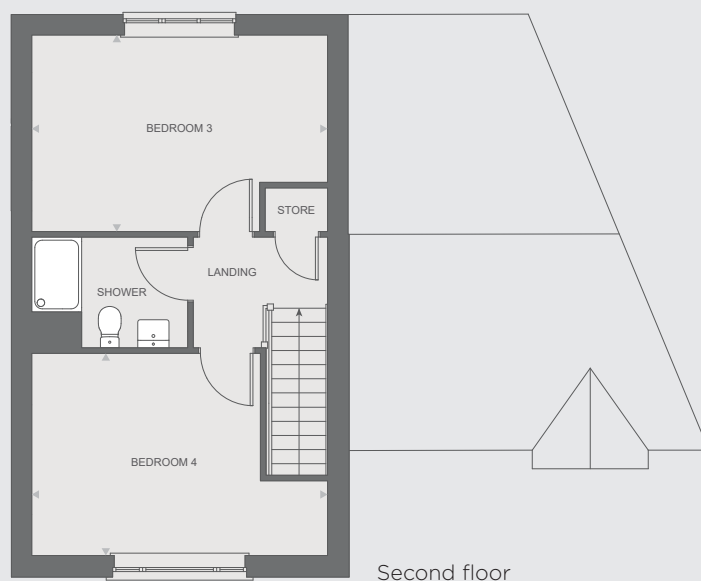
Ground floor

Kitchen	4.790m x 3.304m
Dining	3.842m x 2.685m
Cloak room	2.503m x 1.479m
Living room	5.564m x 4.415m
Utility	3.376m x 1.888m
Hall	2.017m x 3.382m



First floor

Bedroom 1	4.415m x 5.564m
Bedroom 2	4.790m x 2.813m
Bathroom	2.175m x 2.598m
En-suite	1.888m x 2.677m
Study	2.598m x 3.277m



Second floor

Bedroom 3	4.790m x 3.188m
Bedroom 4	4.790m x 3.277m
Shower	1.800m x 2.548m
Total area	174.76 m²