



# Persona Homes

by Home Group

## YEW

KELVEDON HATCH

3-bedroom home

*Both the living room and the kitchen open out onto the rear garden, making this home a perfect place for summer entertaining!*



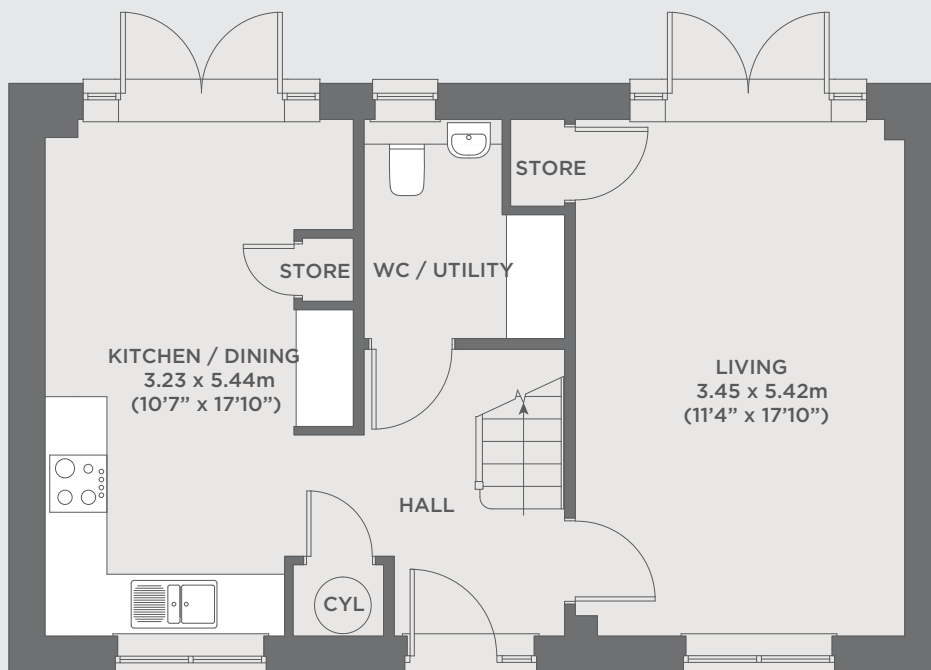
Contact us:

T: 0800 030 8888

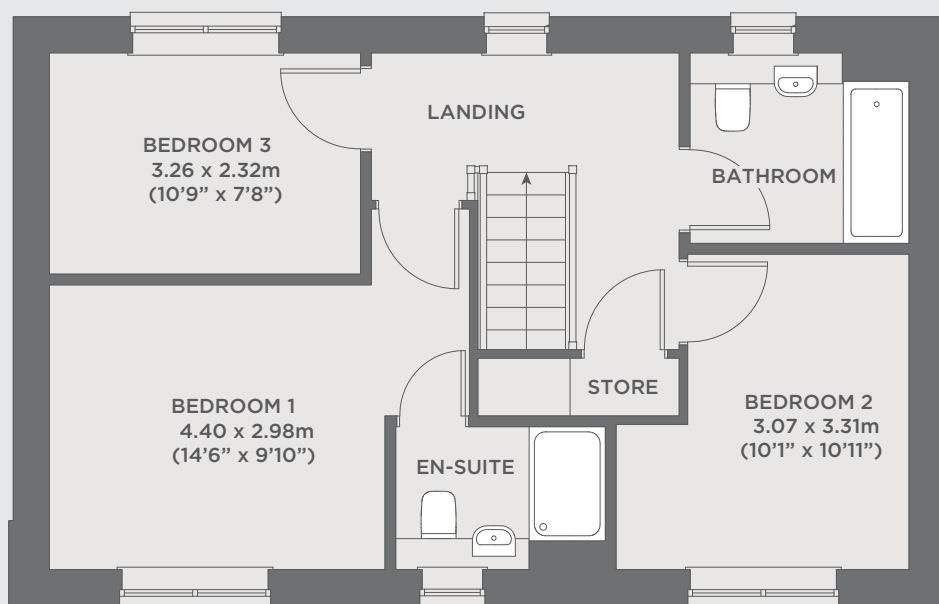
E: [contactus@yourpersonahome.com](mailto:contactus@yourpersonahome.com)

W: [yourpersonahome.com](http://yourpersonahome.com)

Blackmore Road, Kelvedon Hatch, CM15 0FP



Ground floor



First floor

## Ground floor

Kitchen/dining	3.23m x 5.44m
Living	3.45m x 5.42m

## First floor

Bedroom 1	4.40m x 2.98m
Bedroom 2	3.07m x 3.31m
Bedroom 3	3.26m x 2.32m
<b>Total area</b>	<b>97.85 m<sup>2</sup></b>