



Persona Homes

by Home Group

RADWINTER ROAD

Saffron Walden

2 bedroom homes

Beautiful two bedroom homes available through shared ownership in the delightful market town of Saffron Walden, just 15 miles south of Cambridge.

These impressive homes are designed with a high specification to suit a range of lifestyles and built to high standards of sustainability. Each home is contemporary in design, with a stunning specification, fully-integrated appliances and flexible living areas, ready for you to make your own. Close to schools rated 'Good' and 'Outstanding' and off-road allocated car parking - perfect for the growing families.



Contact us:

T: 0800 030 8888

E: contactus@yourpersonahome.com

W: yourpersonahome.com

Radwinter Road, Pearson Road, Saffron Walden, CB10 2NT



Plots 163, 164, 178, 182 & 184

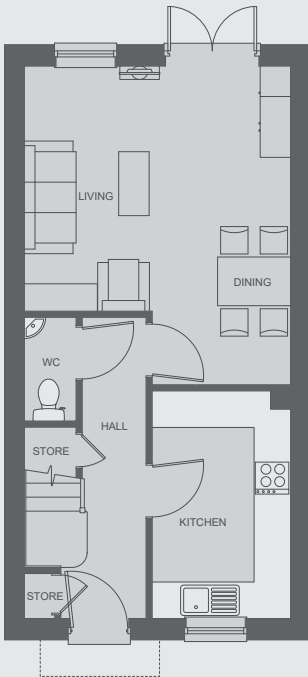
2 bedroom home

Specification includes

- Contemporary fitted Symphony kitchen
- Zanussi oven, hob and cooker hood
- Integrated fridge/freezer*
- Karndean flooring to hallway, kitchen and living areas
- Carpet to bedrooms, stairs and landing

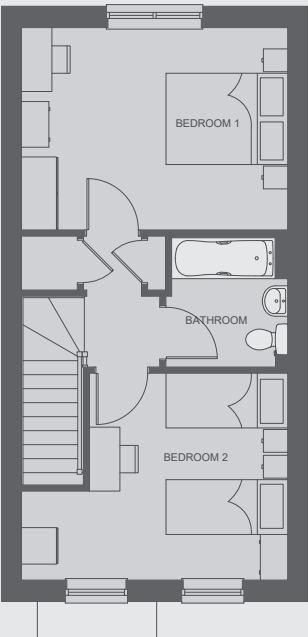
Ground floor

Living room	5.30m x 4.42m
WC	1.7m x 0.91m
Kitchen	3.78m x 2.31m



First floor

Bedroom 1	4.42m x 3.38m
Bedroom 2	4.42m x 3.45m
Bathroom	2.18m x 2.04m
Total Area	80m²



WC = Washroom



Any floor plans are a general outline of the layout of the property for guidance only. All measurements are approximate and may vary and any intending purchasers should not rely on them as statements of fact or representations of fact but must satisfy themselves by inspection or otherwise as to their accuracy. Dimensions shown are not intended to be relied upon for installation of appliances or items of furniture or otherwise. Cgi's and images are for illustrative purposes only.