



Persona Homes

by Home Group

KINGS BARTON

WINCHESTER, HAMPSHIRE

3 bedroom house

A beautiful place to start afresh and call home

Located on the aspirational northern gateway, connecting you to the city and neighbouring communities, these stunning three bedroom homes offer you everything you would need and more right on your doorstep.

Reserving
from
Summer
2021



Contact us:

T: 0800 030 8888

E: contactus@yourpersonahome.com

W: yourpersonahome.com

Andover Road, Winchester, Hampshire, SO22 6FH

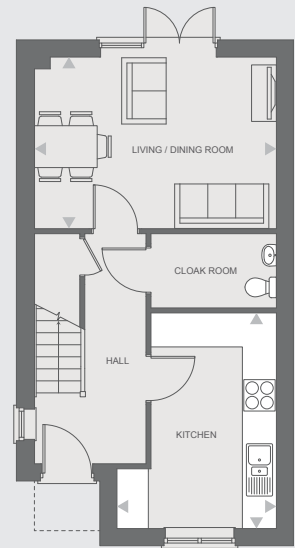


Plots 73, 74, 75, 76

3 bedroom houses

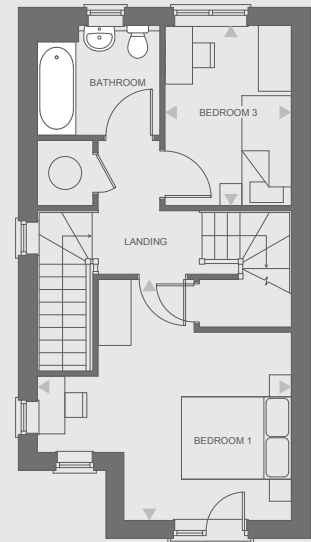
Ground floor

Living/dining room	3.32m x 4.97m
Downstairs WC	2.44m x 1.44m
Kitchen	4.16m x 3.10m



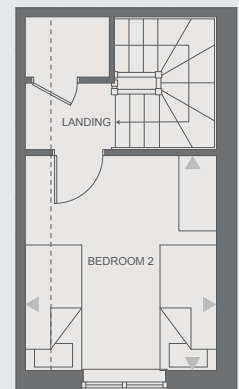
First floor

Bedroom 1	3.46m x 4.97m
Bedroom 3	3.32m x 2.34m
Bathroom	2.04m x 2.27m



Second floor

Bedroom 2	3.46m x 3.55m
Total Area	98.4m ²



Any floor plans are a general outline of the layout of the property for guidance only. All measurements are approximate and may vary and any intending purchasers should not rely on them as statements of fact or representations of fact but must satisfy themselves by inspection or otherwise as to their accuracy. Dimensions shown are not intended to be relied upon for installation of appliances or items of furniture or otherwise. CGI's and images are for illustrative purposes only. Specifications are subject to change. Images are indicative only and may be of previous developments.