



Persona Homes

by Home Group

LANGUARD VIEW

DOVERCOURT

Beaumont

(Plots 4, 5, 17 and 18)

3-bedroom homes

A lovely family home with notable features.

The separate lounge with dual windows at the front of the house is a great place for relaxing. The modern kitchen and dining area with integrated appliances overlooks the back garden and is sure to be the heart of the home. Beaumont comes with ample storage and a turfed and fenced rear garden with storage shed.



Contact us:

T: 0800 030 8888

E: contactus@yourpersonahome.com

W: yourpersonahome.com

Low Road, Dovercourt, Essex, CO12 3TQ.

Plots 4,5,17 and 18

Ground floor

Kitchen/dining 3.12m x 5.14m

Living room 3.71m x 4.43m

First floor

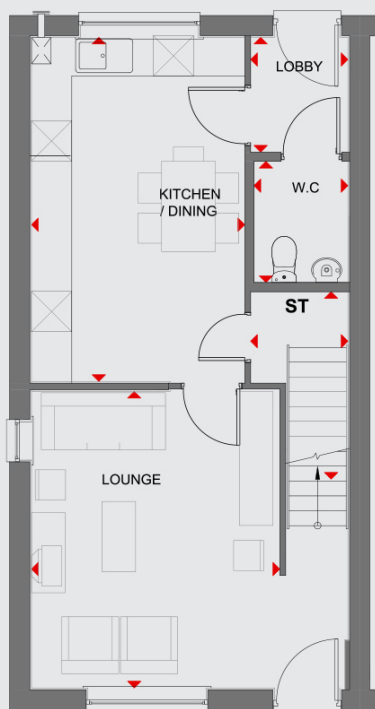
Main bedroom 4.7m x 2.97m

Bedroom 2 2.52m x 4.53m

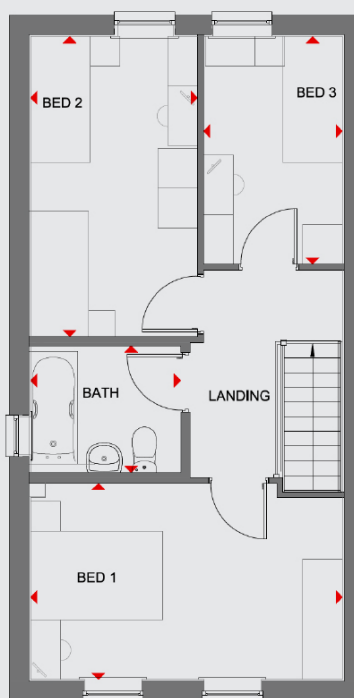
Bedroom 3 2.10m x 3.43m

Bathroom 2.27m x 1.91m

Total floor area 93.04m²



Ground floor



First floor



Any floor plans are a general outline of the layout of the property for guidance only. All measurements are approximate and may vary and any intending purchasers should not rely on them as statements of fact or representations of fact but must satisfy themselves by inspection or otherwise as to their accuracy. Dimensions shown are not intended to be relied upon for installation of appliances or items of furniture or otherwise. CGI's and images are for illustrative purposes only. Specifications are subject to change. Images are indicative only and may be of previous developments.*Journey times and distances taken from [google.com/maps](https://www.google.com/maps) and are correct before going to print. All times and distances listed are approximate and may vary depending on time of travel.



Persona Homes

by Home Group

LANGUARD VIEW

DOVERCOURT

Beaumont

(Plots 47 and 48)

3-bedroom homes

A lovely family home with notable features.

The separate lounge with dual windows at the front of the house is a great place for relaxing. The modern kitchen and dining area with integrated appliances overlooks the back garden and is sure to be the heart of the home. Beaumont comes with ample storage and a turfed and fenced rear garden with storage shed.



Contact us:

T: 0800 030 8888

E: contactus@yourpersonahome.com

W: yourpersonahome.com

Low Road, Dovercourt, Essex, CO12 3TQ.

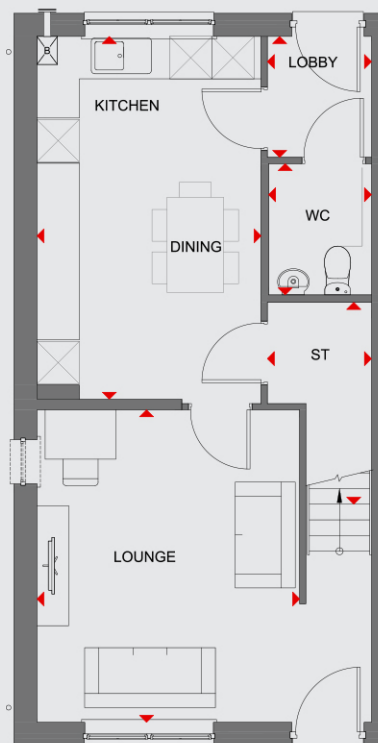
Plots 47 and 48

Ground floor

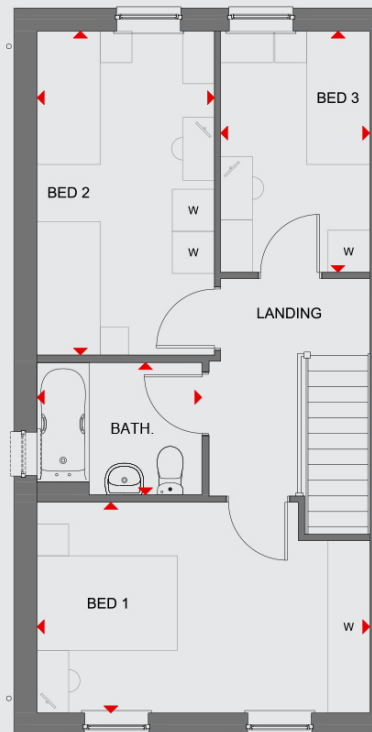
Kitchen/dining	3.17m x 5.14m
Living room	3.71m x 4.43m

First floor

Main bedroom	4.73m x 3.0m
Bedroom 2	2.52m x 4.61m
Bedroom 3	2.12m x 3.43m
Bathroom	2.34m x 1.88m
Total floor area	93.04m ²



Ground floor



First floor



Any floor plans are a general outline of the layout of the property for guidance only. All measurements are approximate and may vary and any intending purchasers should not rely on them as statements of fact or representations of fact but must satisfy themselves by inspection or otherwise as to their accuracy. Dimensions shown are not intended to be relied upon for installation of appliances or items of furniture or otherwise. CGI's and images are for illustrative purposes only. Specifications are subject to change. Images are indicative only and may be of previous developments.*Journey times and distances taken from [google.com/maps](https://www.google.com/maps) and are correct before going to print. All times and distances listed are approximate and may vary depending on time of travel.