



# Persona Homes

by Home Group

## LONGRIDGE FARM

Bedlington

### Ingleton

*Ready to take your first step onto the property ladder? Discover the Ingleton!*

This lovely 3-bedroom home has a bright and airy kitchen/dining room and a cosy separate living room for when you need a break from the hustle and bustle of a busy household. It also has the added bonus of a handy utility room and cloakroom. Add to this 3 bedrooms, an en-suite and a family bathroom - there's plenty of room for the whole family. To complete the home, we've included driveway parking for 2 cars.



#### Contact us:

T: 0800 030 8888

E: [contactus@yourpersonahome.com](mailto:contactus@yourpersonahome.com)

W: [yourpersonahome.com](http://yourpersonahome.com)

Choppington Road, Bedlington, NE22 6LA



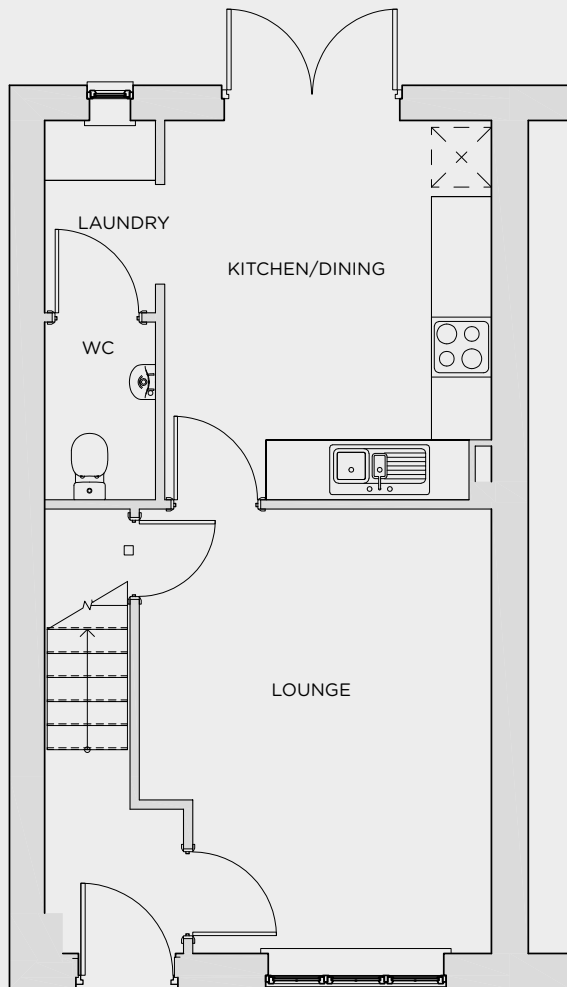
## Ground floor

Lounge 3.53m x 4.45m

Kitchen/dining 3.27m x 3.80m

Laundry 1.11m x 1.92m

WC 1.11m x 1.78m



Ground floor

## First floor

Main bedroom 2.98m x 3.24m

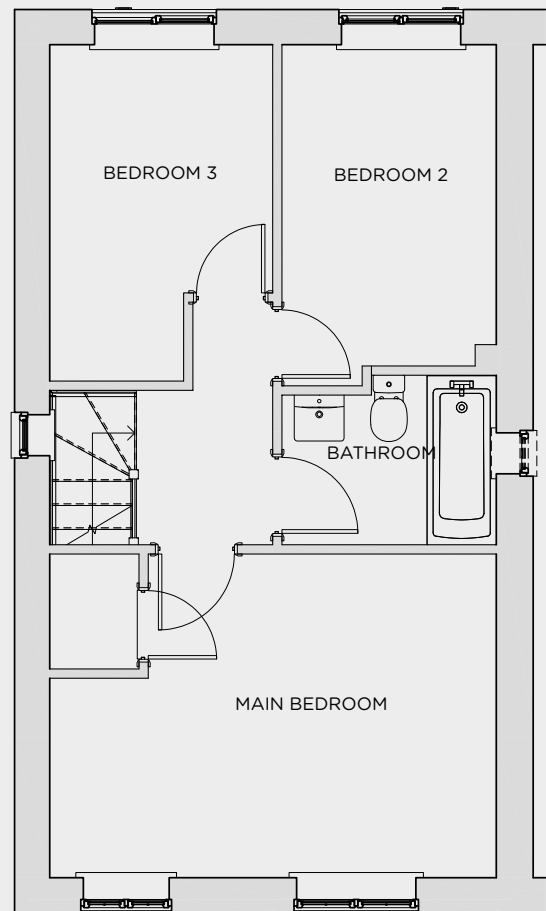
En-suite 1.18m x 1.99m

Bedroom 2 2.37m x 3.22m

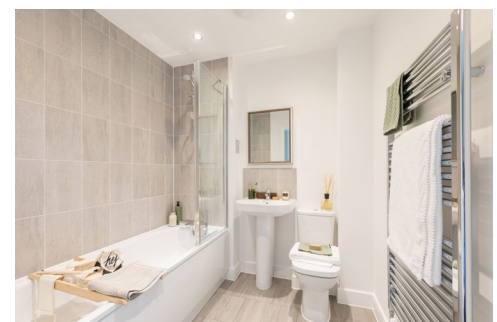
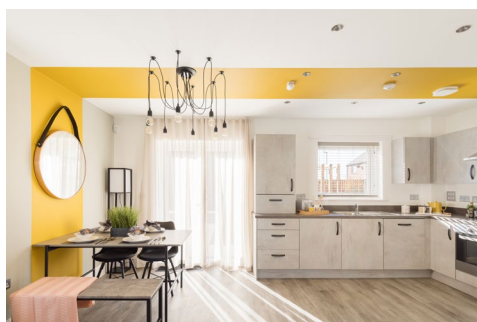
Bedroom 3 2.00m x 2.14m

Bathroom 2.37m x 1.70m

Total Area 74.88m<sup>2</sup>



First floor



Any floor plans are a general outline of the layout of the property for guidance only. All measurements are approximate and may vary and any intending purchasers should not rely on them as statements of fact or representations of fact but must satisfy themselves by inspection or otherwise as to their accuracy. Dimensions shown are not intended to be relied upon for installation of appliances or items of furniture or otherwise. CGI's and images are for illustrative purposes only. Specifications are subject to change. Images are indicative only and may be of previous developments.\*Journey times and distances taken from google.com/ maps and are correct before going to print. All times and distances listed are approximate and may vary depending on time of travel.



# Persona Homes

by Home Group

## LONGRIDGE FARM

Bedlington

### Beauwood

*A four-bedroom home that has a lot to offer, the Beauwood is a smart choice for today's busy family living.*

The Beauwood is packed full of premium features from the bay window in the living room, to the modern family bathroom and en-suite. With four good sized bedrooms, a laundry room and a downstairs cloakroom, this home combines functionality with style.



#### Contact us:

T: 0800 030 8888

E: [contactus@yourpersonahome.com](mailto:contactus@yourpersonahome.com)

W: [yourpersonahome.com](http://yourpersonahome.com)

Choppington Road, Bedlington, NE22 6LA

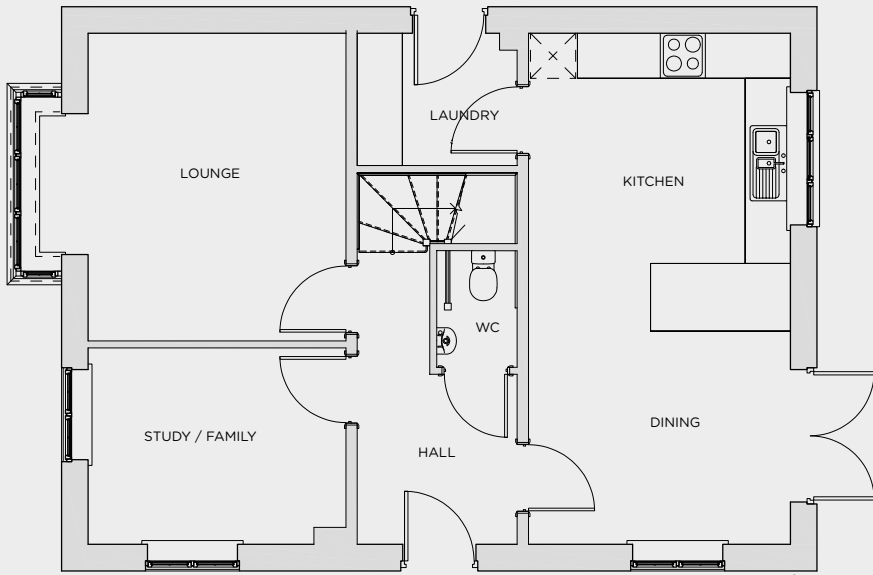


## Ground floor

Lounge	4.10m x 4.09m
Kitchen	3.48m x 3.96m
Laundry	2.12m x 1.76m
Dining	3.48m x 2.83m
Study/Family	3.42m x 2.61m

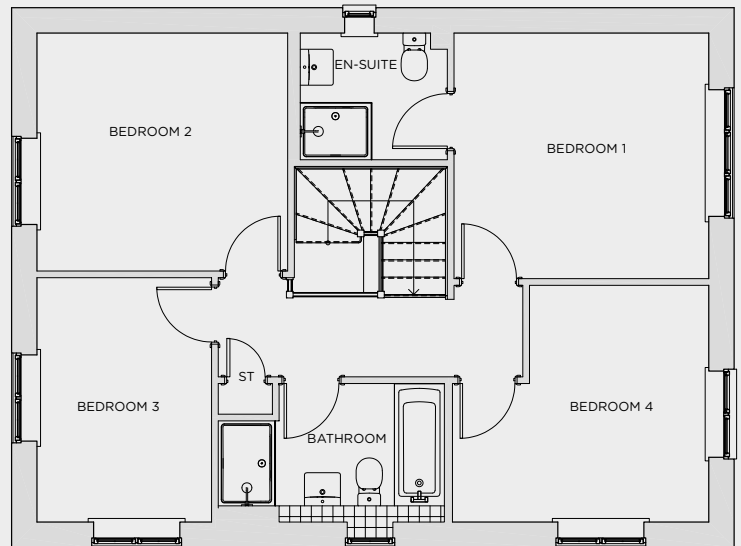
## First floor

Main bedroom	3.53m x 3.41m
En-suite	2.04m x 1.79m
Bedroom 2	3.48m x 3.30m
Bedroom 3	2.42m x 3.39m
Bedroom 4	3.56m x 3.28m
Bathroom	2.29m x 1.70m
<b>Total Area</b>	<b>128.11m<sup>2</sup></b>



Ground floor

First floor



Any floor plans are a general outline of the layout of the property for guidance only. All measurements are approximate and may vary and any intending purchasers should not rely on them as statements of fact or representations of fact but must satisfy themselves by inspection or otherwise as to their accuracy. Dimensions shown are not intended to be relied upon for installation of appliances or items of furniture or otherwise. CGI's and images are for illustrative purposes only. Specifications are subject to change. Images are indicative only and may be of previous developments.\*Journey times and distances taken from google.com/ maps and are correct before going to print. All times and distances listed are approximate and may vary depending on time of travel.



# Persona Homes

by Home Group

## LONGRIDGE FARM

Bedlington

### Braxton

*One of our largest 3-bedroom homes, the Braxton comes with a little bit more.*

This home is bright and airy with spacious rooms, many of which feature dual aspect. The open-plan kitchen and dining room is sure to be the heart of the home. With three bedrooms, including an en-suite in the main bedroom, a modern family bathroom, and a convenient laundry room, there's plenty of space for everyone to enjoy!



#### Contact us:

T: 0800 030 8888

E: [contactus@yourpersonahome.com](mailto:contactus@yourpersonahome.com)

W: [yourpersonahome.com](http://yourpersonahome.com)

Choppington Road, Bedlington, NE22 6LA



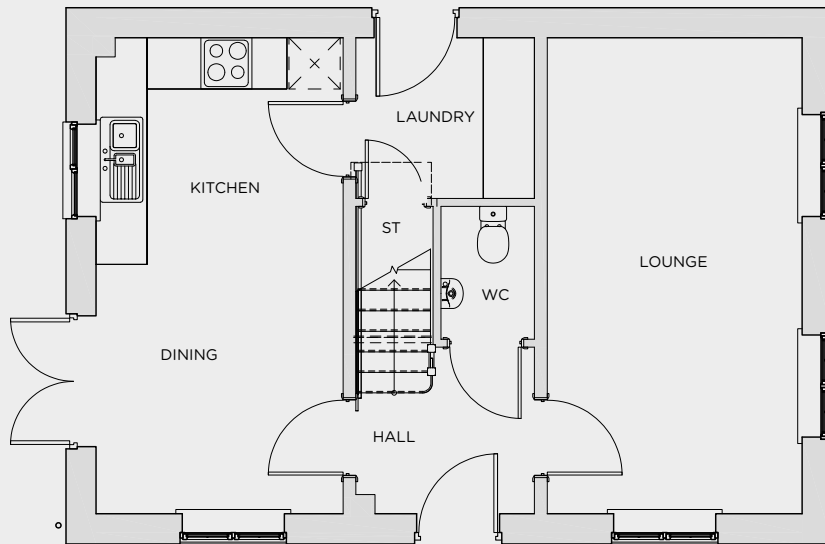
## Ground floor

Lounge	2.99m x 5.58m
Kitchen	2.90m x 2.65m
Dining	2.90m x 2.92m
Laundry	2.09m x 1.88m

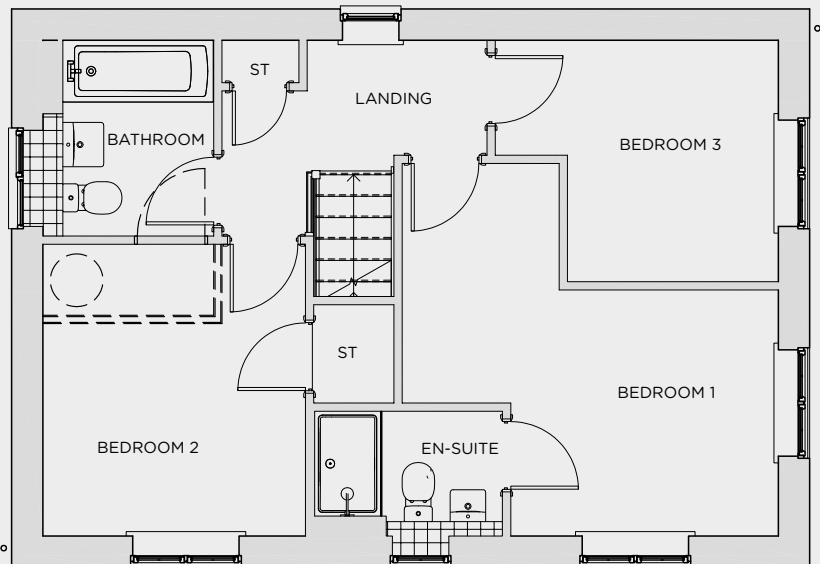
## First floor

Main bedroom	3.01m x 2.77m
En-suite	2.11m x 1.24m
Bedroom 2	2.95m x 3.28m
Bedroom 3	3.19m x 2.72m
Bathroom	1.70m x 2.20m
<b>Total Area</b>	<b>92.53m<sup>2</sup></b>

Ground floor



First floor



Any floor plans are a general outline of the layout of the property for guidance only. All measurements are approximate and may vary and any intending purchasers should not rely on them as statements of fact or representations of fact but must satisfy themselves by inspection or otherwise as to their accuracy. Dimensions shown are not intended to be relied upon for installation of appliances or items of furniture or otherwise. CGI's and images are for illustrative purposes only. Specifications are subject to change. Images are indicative only and may be of previous developments.\*Journey times and distances taken from google.com/ maps and are correct before going to print. All times and distances listed are approximate and may vary depending on time of travel.



# Persona Homes

by Home Group

## LONGRIDGE FARM

Bedlington

### Calderton

*Looking for a family home that you can grow into? Look no further,  
the Calderton is the home for you.*

Spread across three floors, the Calderton is thoughtfully designed with spacious living areas downstairs and generous bedrooms upstairs. With a main bedroom suite on the top floor, we can see why this home has proven to be popular!



#### Contact us:

T: 0800 030 8888

E: [contactus@yourpersonahome.com](mailto:contactus@yourpersonahome.com)

W: [yourpersonahome.com](http://yourpersonahome.com)

Choppington Road, Bedlington, NE22 6LA



## Ground floor

Lounge 2.96m × 4.3m

Kitchen/Dining 3.96m × 3.11m

## First floor

Bedroom 2 3.96m × 2.76m

Bedroom 3 1.95m × 2.52m

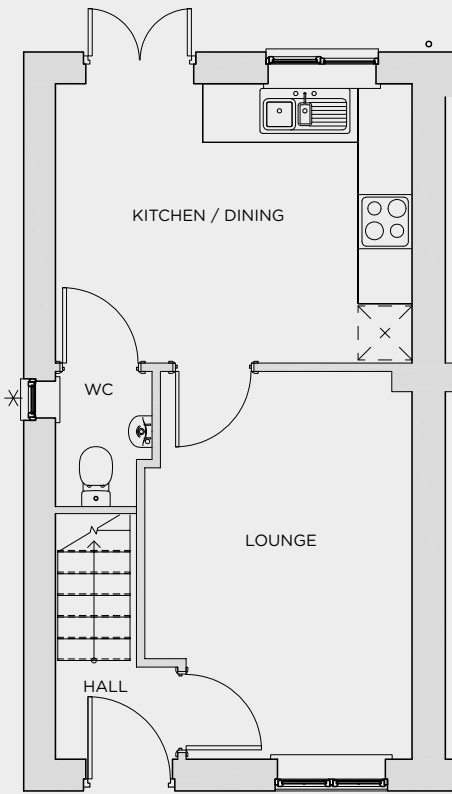
Bathroom 1.7m × 2.03m

## Second floor

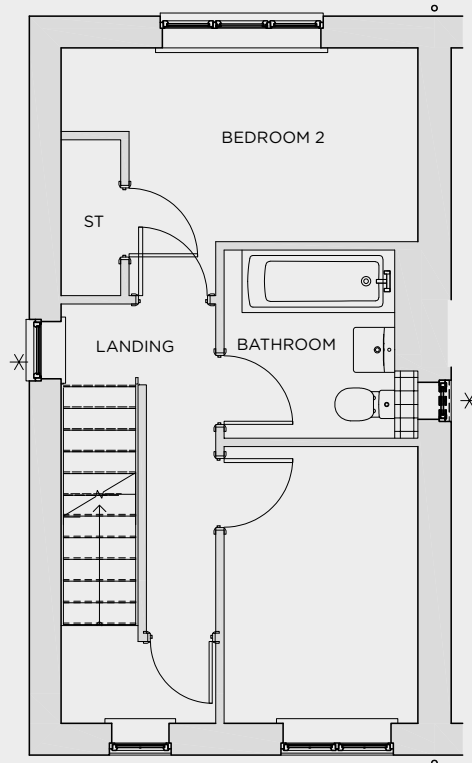
Main bedroom 3.01m × 2.52m

En-suite 1.89m × 1.81m

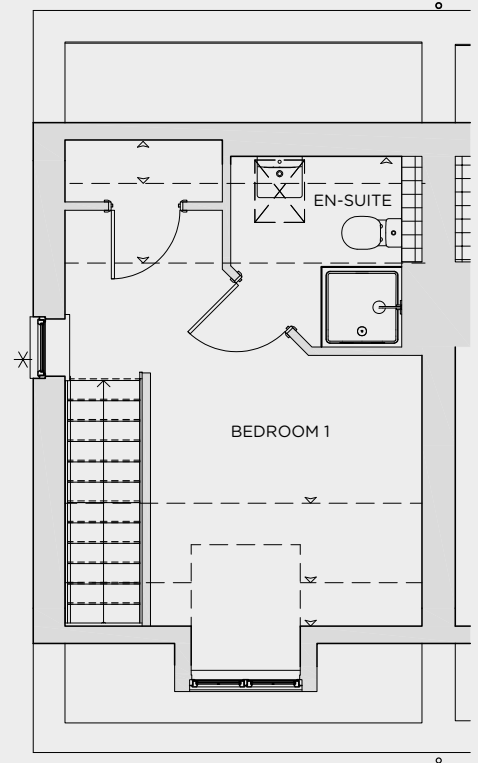
Total Area 78.22m<sup>2</sup>



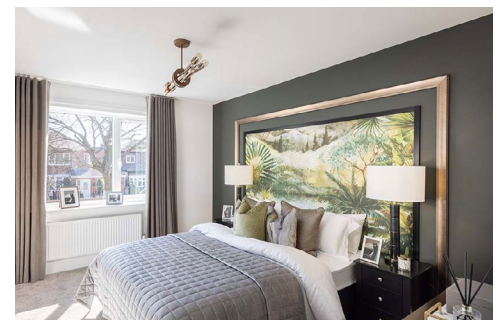
Ground floor



First floor



Second floor



Any floor plans are a general outline of the layout of the property for guidance only. All measurements are approximate and may vary and any intending purchasers should not rely on them as statements of fact or representations of fact but must satisfy themselves by inspection or otherwise as to their accuracy. Dimensions shown are not intended to be relied upon for installation of appliances or items of furniture or otherwise. CGI's and images are for illustrative purposes only. Specifications are subject to change. Images are indicative only and may be of previous developments.\*Journey times and distances taken from google.com/ maps and are correct before going to print. All times and distances listed are approximate and may vary depending on time of travel.





# Persona Homes

by Home Group

## LONGRIDGE FARM

Bedlington

### Kirkwood

*One of our larger 4-bedroom homes, the Kirkwood offers a little bit extra.*

The spacious kitchen, dining, and family room span the entire width of the property, and is sure to be the heart of the home. While a separate living room gives you space to relax and unwind after a busy day. With four bedrooms, a family bathroom, and an en-suite to the main bedroom, this home offers ample space for comfortable living. Selected plots also feature a garage for added convenience!



#### Contact us:

T: 0800 030 8888

E: [contactus@yourpersonahome.com](mailto:contactus@yourpersonahome.com)

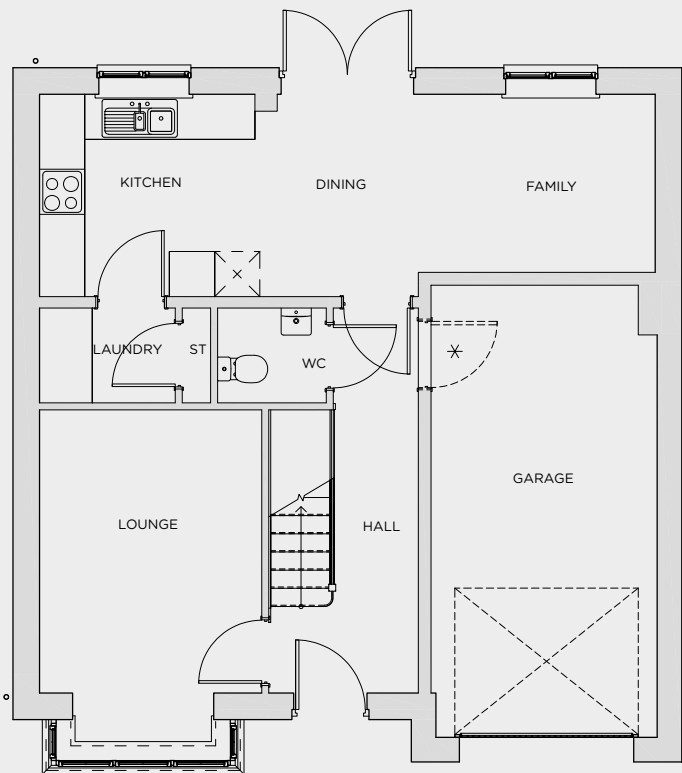
W: [yourpersonahome.com](http://yourpersonahome.com)

Choppington Road, Bedlington, NE22 6LA



## Ground floor

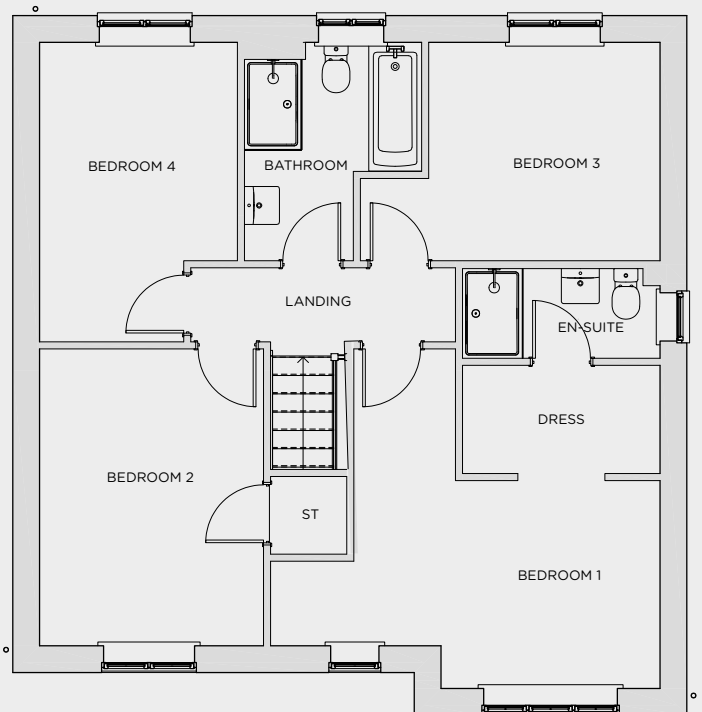
Lounge	2.95m × 4.43m
Kitchen	2.86m × 2.68m
Laundry	1.8m × 1.26m
Dining	2.16m × 2.68m
Family	3.14m × 2.36m



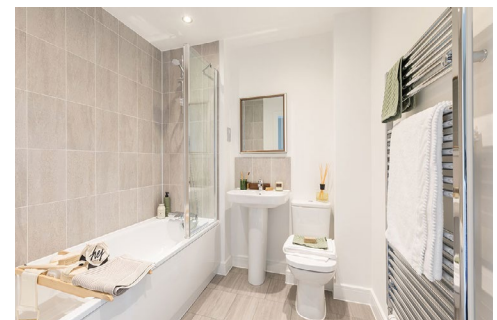
Ground floor

## First floor

Main bedroom	4.03m × 2.75m
En-suite	2.6m × 1.18m
Dressing	2.6m × 1.42m
Bedroom 2	2.95m × 3.91m
Bedroom 3	3.04m × 2.87m
Bedroom 4	2.6m × 3.94m
Bathroom	2.33m × 2.87m
Total Area	115.2m <sup>2</sup>



First floor



Any floor plans are a general outline of the layout of the property for guidance only. All measurements are approximate and may vary and any intending purchasers should not rely on them as statements of fact or representations of fact but must satisfy themselves by inspection or otherwise as to their accuracy. Dimensions shown are not intended to be relied upon for installation of appliances or items of furniture or otherwise. CGI's and images are for illustrative purposes only. Specifications are subject to change. Images are indicative only and may be of previous developments.\*Journey times and distances taken from google.com/ maps and are correct before going to print. All times and distances listed are approximate and may vary depending on time of travel.



# Persona Homes

by Home Group

## LONGRIDGE FARM

Bedlington

### Skywood

*This 4-bedroom home certainly packs a punch!*

The Skywood has a lovely open-plan kitchen/dining room with a conveniently located laundry room just off from the room. With 4 bedrooms, an en-suite to the main bedroom, a family bathroom and an integral garage, we can see why this home has been a popular choice.



#### Contact us:

T: 0800 030 8888

E: [contactus@yourpersonahome.com](mailto:contactus@yourpersonahome.com)

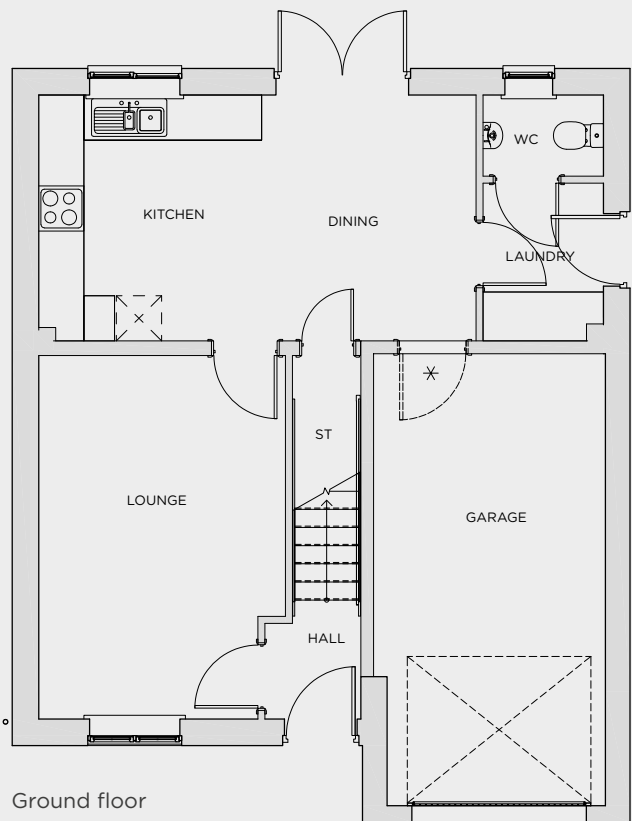
W: [yourpersonahome.com](http://yourpersonahome.com)

Choppington Road, Bedlington, NE22 6LA



## Ground floor

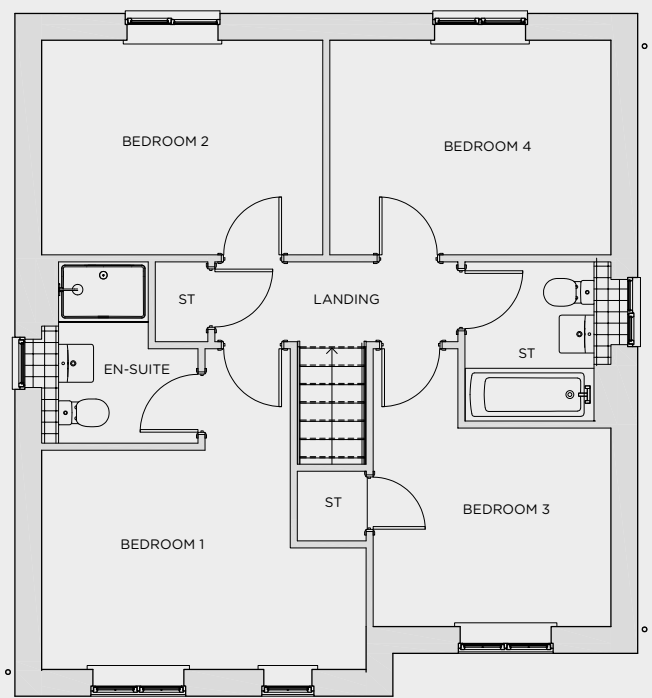
Lounge	3.27m x 4.82m
Kitchen	2.95m x 3.26m
Laundry	1.60m x 2.09m
Dining	2.84m x 3.26m



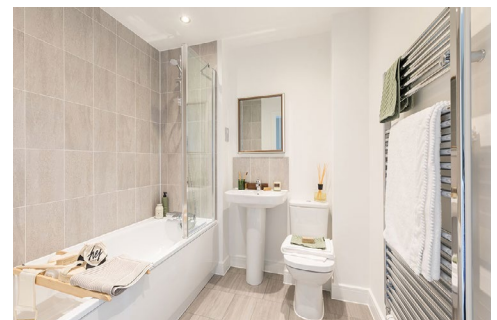
Ground floor

## First floor

Main bedroom	4.27m x 2.88m
En-suite	1.83m x 2.38m
Bedroom 2	3.70m x 2.82m
Bedroom 3	3.13m x 2.61m
Bedroom 4	3.70m x 2.82m
Bathroom	1.70m x 2.09m
<b>Total Area</b>	<b>106.28m<sup>2</sup></b>



First floor



Any floor plans are a general outline of the layout of the property for guidance only. All measurements are approximate and may vary and any intending purchasers should not rely on them as statements of fact or representations of fact but must satisfy themselves by inspection or otherwise as to their accuracy. Dimensions shown are not intended to be relied upon for installation of appliances or items of furniture or otherwise. CGI's and images are for illustrative purposes only. Specifications are subject to change. Images are indicative only and may be of previous developments.\*Journey times and distances taken from google.com/ maps and are correct before going to print. All times and distances listed are approximate and may vary depending on time of travel.



# Persona Homes

by Home Group

## LONGRIDGE FARM

Bedlington

### Whitton

*Discover the Whitton, a great 3-bedroom home that's designed for family living.*

The Whitton has a great open-plan kitchen/dining room and a generous living room that will be the real heart to the home. Add to this three bedrooms, a modern bathroom and handy downstairs cloakroom, there is enough room for the whole family.



#### Contact us:

**T:** 0800 030 8888

**E:** [contactus@yourpersonahome.com](mailto:contactus@yourpersonahome.com)

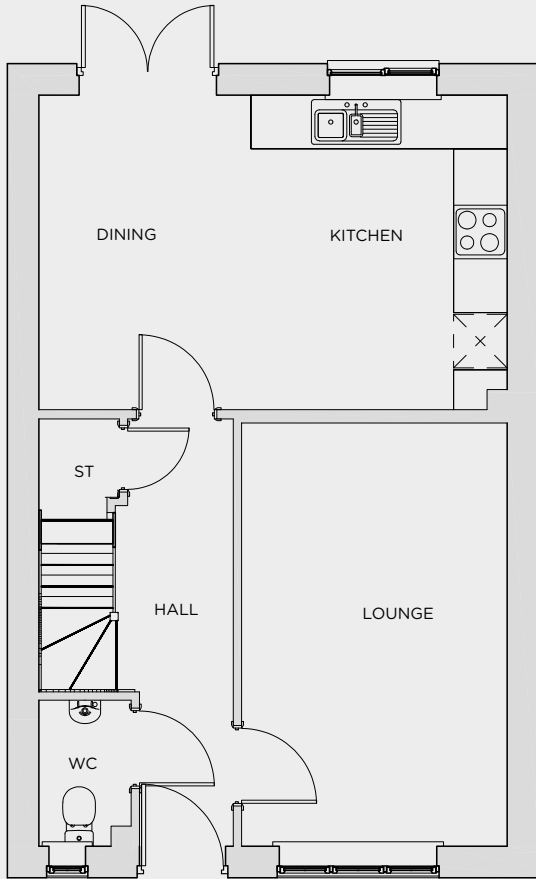
**W:** [yourpersonahome.com](http://yourpersonahome.com)

Choppington Road, Bedlington, NE22 6LA



## Ground floor

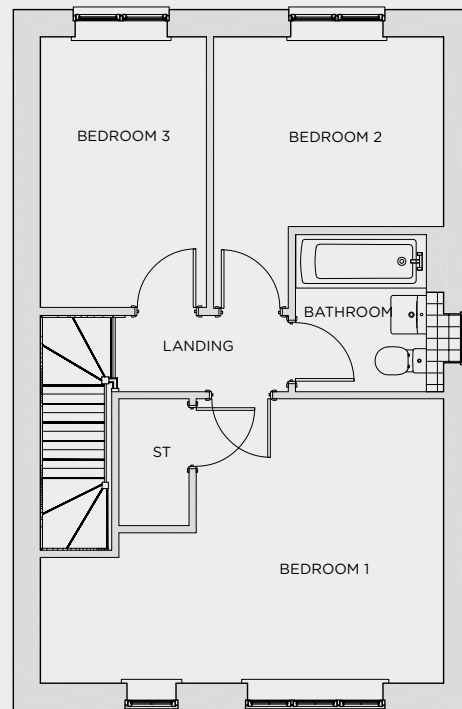
Lounge	2.96m × 4.73m
Kitchen	2.86m × 3.51m
Dining	2.37m × 3.51m



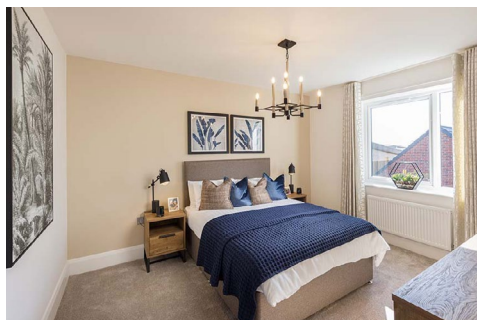
Ground floor

## First floor

Main bedroom	3.21m × 3.69m
En-suite	1.92m × 1.95m
Bedroom 2	2.98m × 2.46m
Bedroom 3	2.15m × 3.51m
Bathroom	1.7m × 2.04m
Total Area	87.99m <sup>2</sup>



First floor



Any floor plans are a general outline of the layout of the property for guidance only. All measurements are approximate and may vary and any intending purchasers should not rely on them as statements of fact or representations of fact but must satisfy themselves by inspection or otherwise as to their accuracy. Dimensions shown are not intended to be relied upon for installation of appliances or items of furniture or otherwise. CGI's and images are for illustrative purposes only. Specifications are subject to change. Images are indicative only and may be of previous developments.\*Journey times and distances taken from google.com/ maps and are correct before going to print. All times and distances listed are approximate and may vary depending on time of travel.