



Persona Homes

by Home Group

## WEST PARK QUARTER

SUNDERLAND

MYLNE

4-bedroom house

*Looking for a home with room to grow?*

*Mylne offers four bedrooms, including a private en-suite, plus a bright open-plan kitchen and family space that's perfect for entertaining. With a separate living room and plenty of storage, it's designed for modern family life.*



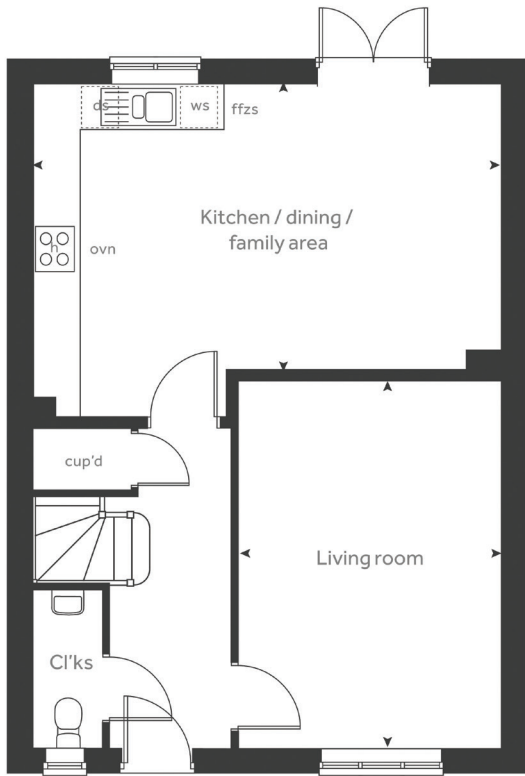
Contact us:

T: 0800 030 8888

E: [contactus@yourpersonahome.com](mailto:contactus@yourpersonahome.com)

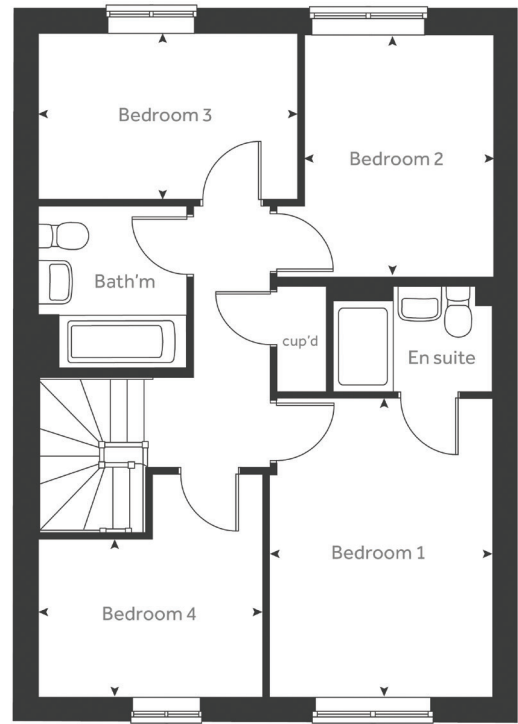
W: [yourpersonahome.com](http://yourpersonahome.com)

Burdon Road, Sunderland, Tyne and Wear, SR2 7BJ



## Ground floor

Kitchen/dining/family area	6.06m x 3.80m
Living room	4.84m x 3.42m



## First floor

Bedroom 1	3.93m x 2.95m
Bedroom 2	3.28m x 2.60m
Bedroom 3	3.38m x 2.23m
Bedroom 4	3.02m x 2.09m
Total area	
105.54m <sup>2</sup>	



Any floor plans are a general outline of the layout of the property for guidance only. All measurements are approximate and may vary and any intending purchasers should not rely on them as statements of fact or representations of fact but must satisfy themselves by inspection or otherwise as to their accuracy. Dimensions shown are not intended to be relied upon for installation of appliances or items of furniture or otherwise. CGI's and images are for illustrative purposes only. Specifications are subject to change. Images are indicative only and may be of previous developments.\*Journey times and distances taken from google.com/ maps and are correct before going to print. All times and distances listed are approximate and may vary depending on time of travel.





Persona Homes

by Home Group

## WEST PARK QUARTER

SUNDERLAND

SANDY

3-bedroom house

*Looking for a home that fits your lifestyle?*

*Sandy offers three storeys of flexible living, with an open-plan kitchen and dining space, a cosy living room and a private en-suite bedroom. Add two more bedrooms and a family bathroom, and you've got room for everyone — all available with shared ownership.*



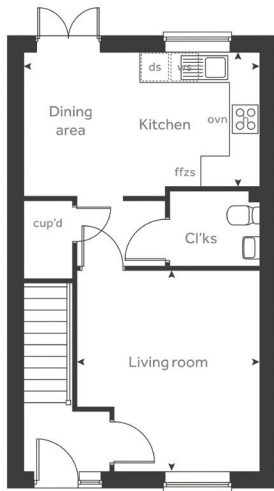
Contact us:

T: 0800 030 8888

E: [contactus@yourpersonahome.com](mailto:contactus@yourpersonahome.com)

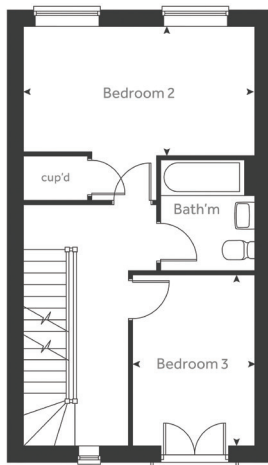
W: [yourpersonahome.com](http://yourpersonahome.com)

Burdon Road, Sunderland, Tyne and Wear, SR2 7BJ



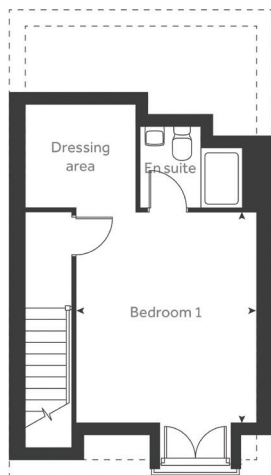
## Ground floor

Kitchen/dining area	4.71m x 2.66m
Living room	4.00m x 3.66m



## First floor

Bedroom 2	4.71m x 2.57m
Bedroom 3	3.39m x 2.50m



## Second floor

Bedroom 1	4.21m x 3.66m
<b>Total area</b>	<b>104.52m<sup>2</sup></b>



Any floor plans are a general outline of the layout of the property for guidance only. All measurements are approximate and may vary and any intending purchasers should not rely on them as statements of fact or representations of fact but must satisfy themselves by inspection or otherwise as to their accuracy. Dimensions shown are not intended to be relied upon for installation of appliances or items of furniture or otherwise. CGI's and images are for illustrative purposes only. Specifications are subject to change. Images are indicative only and may be of previous developments.\*Journey times and distances taken from google.com/ maps and are correct before going to print. All times and distances listed are approximate and may vary depending on time of travel.





# Persona Homes

by Home Group

## WEST PARK QUARTER

SUNDERLAND

### BURNET

4-bedroom house

*Looking for your first family home?*

*Burnet gives you room to grow, with four bedrooms, an open-plan kitchen and dining space, and a separate living room for cosy nights in. Add an en-suite, family bathroom and shared ownership options — it's a home designed for life together.*



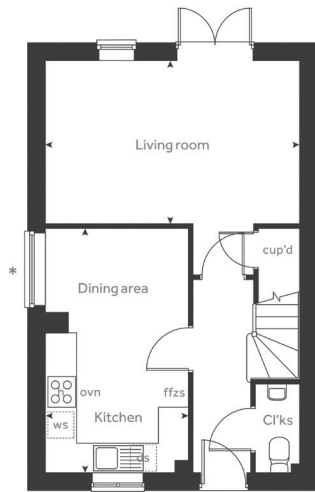
Contact us:

T: 0800 030 8888

E: [contactus@yourpersonahome.com](mailto:contactus@yourpersonahome.com)

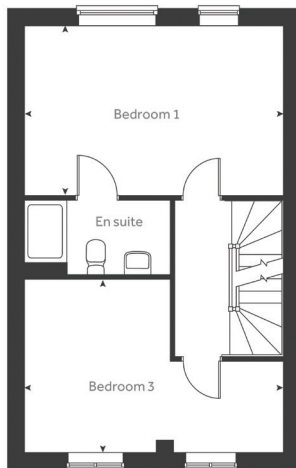
W: [yourpersonahome.com](http://yourpersonahome.com)

Burdon Road, Sunderland, Tyne and Wear, SR2 7BJ



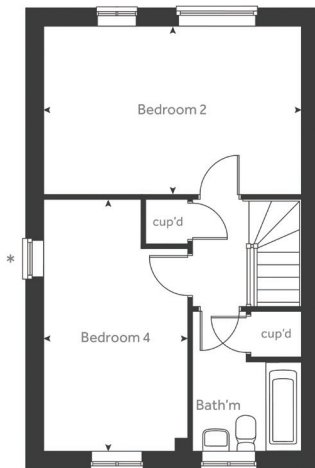
## Ground floor

Kitchen/dining area	4.81m x 2.87m
Living room	5.05m x 3.21m



## First floor

Bedroom 1	5.05m x 3.24m
Bedroom 3	5.05m x 3.27m



## Second floor

Bedroom 2	5.05m x 3.24m
Bedroom 4	4.78m x 3.24m
<b>Total area</b>	<b>120.5m<sup>2</sup></b>



Any floor plans are a general outline of the layout of the property for guidance only. All measurements are approximate and may vary and any intending purchasers should not rely on them as statements of fact or representations of fact but must satisfy themselves by inspection or otherwise as to their accuracy. Dimensions shown are not intended to be relied upon for installation of appliances or items of furniture or otherwise. CGI's and images are for illustrative purposes only. Specifications are subject to change. Images are indicative only and may be of previous developments.\*Journey times and distances taken from google.com/ maps and are correct before going to print. All times and distances listed are approximate and may vary depending on time of travel.