



Persona Homes

by Home Group

BOWLAND FOLD

LANCASHIRE

Sedgwick B

What an amazing detached three-bedroom family home this is!

The downstairs kitchen and dining area, complete with breakfast bar opens out onto the rear garden, together with the separate lounge featuring dual aspect windows. A perfect place for entertaining during the summer months. The main bedroom comes with an en-suite and dressing area. This home is finished to an exceptionally high standard and also comes with a detached garage.



Contact us:

T: 0800 030 8888

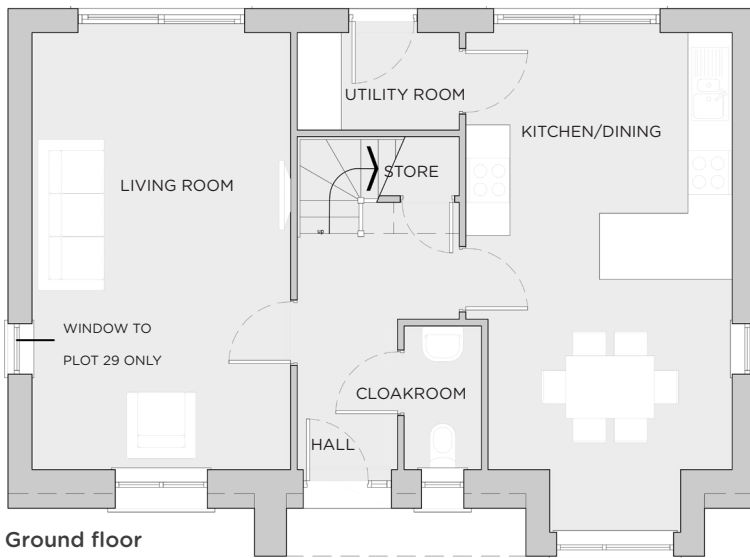
E: contactus@yourpersonahome.com

W: yourpersonahome.com

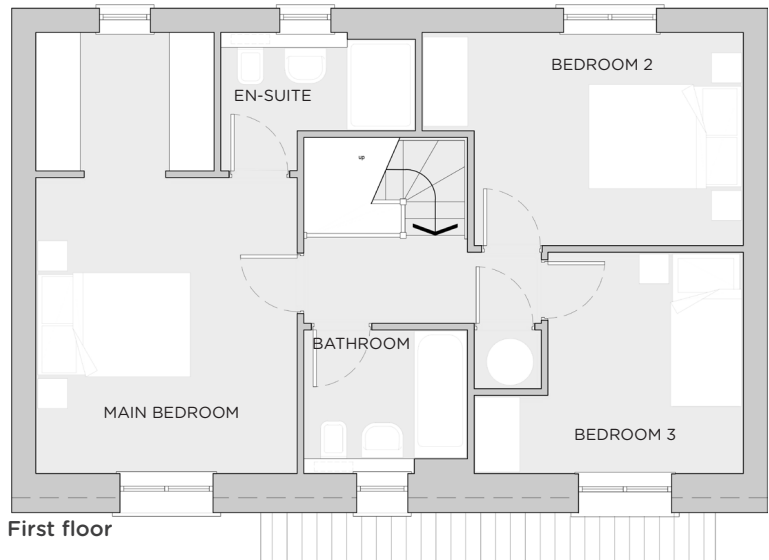
Lonsdale Rd, Halton, Lancaster LA2 6QA

3-bedroom house

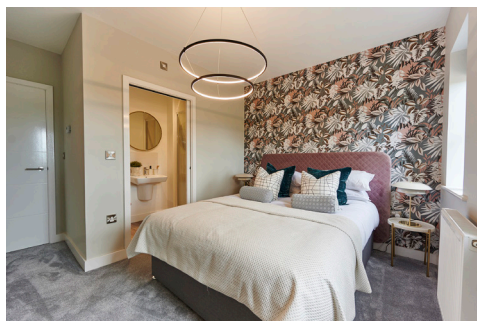
Kitchen/dining	5.94m x 3.49m
Living room	5.92m x 3.52m
Cloakroom	1.84m x 1.02m
Utility	2.25m x 1.41m
Main bedroom	3.97 x 3.50m
En-suite	2.67m x 1.43m
Bedroom 2	4.31m x 2.86m
Bedroom 3	2.97m x 2.47m
Bathroom	2.22m x 1.92m
Total Area	112.9m²



Ground floor



First floor



Any floor plans are a general outline of the layout of the property for guidance only. All measurements are approximate and may vary and any intending purchasers should not rely on them as statements of fact or representations of fact but must satisfy themselves by inspection or otherwise as to their accuracy. Dimensions shown are not intended to be relied upon for installation of appliances or items of furniture or otherwise. Cgi's and images are for illustrative purposes only.