



# Persona Homes

by Home Group

## ROWAN

KELVEDON HATCH

3-bedroom home

*With an open plan living area, you will never be far from the action, this home offers flexible spaces to make your own.*



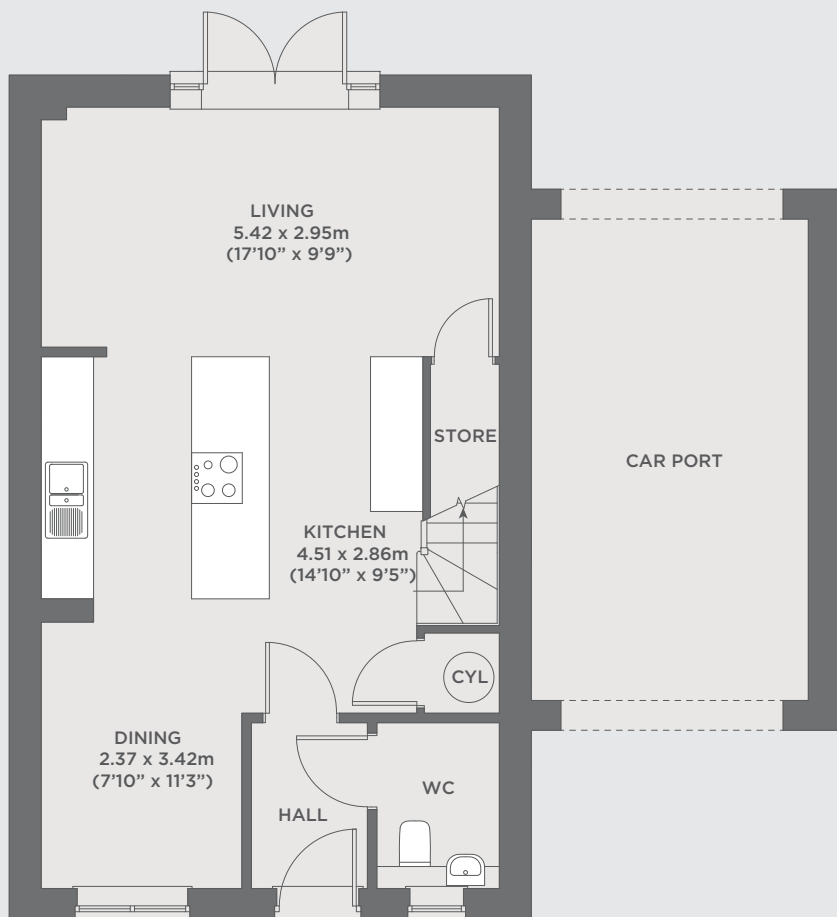
Contact us:

T: 0800 030 8888

E: [contactus@yourpersonahome.com](mailto:contactus@yourpersonahome.com)

W: [yourpersonahome.com](http://yourpersonahome.com)

Blackmore Road, Kelvedon Hatch, CM15 0FP



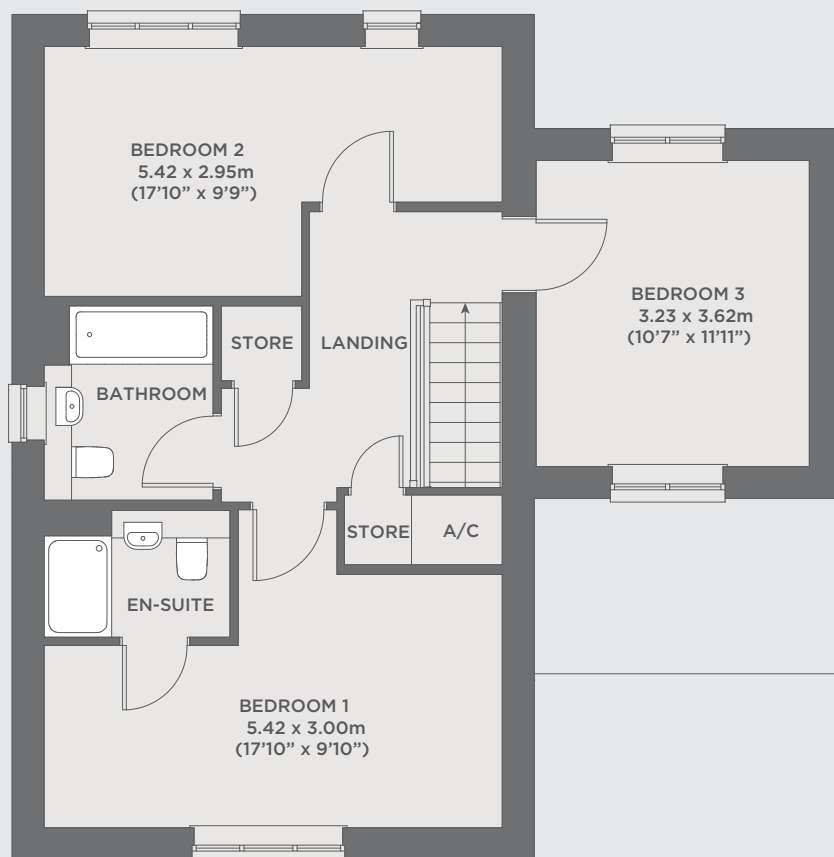
## Ground floor

Kitchen	4.51m x 2.86m
Living	5.42m x 2.95m
Dining	2.37m x 3.42m

Ground floor

## First floor

Bedroom 1	5.42m x 3.00m
Bedroom 2	5.42m x 2.95m
Bedroom 3	3.23m x 3.62m
<b>Total area</b>	<b>113.45 m<sup>2</sup></b>



First floor