



Persona Homes

by Home Group

JUBILEE GARDENS

PENRITH

2-bedroom home

The perfect choice for stepping onto the property ladder, this home has lots to offer.

With a separate lounge to the front of the home and a modern kitchen and dining area opening out to the rear garden, entertaining or relaxing will be a breeze. Both double bedrooms benefit from two windows giving them a light and airy feel. This home is a great starter home.



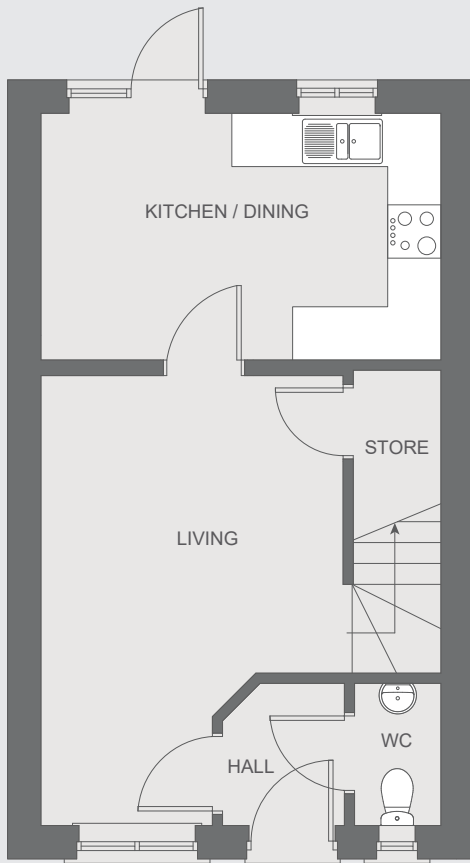
Contact us:

T: 0800 030 8888

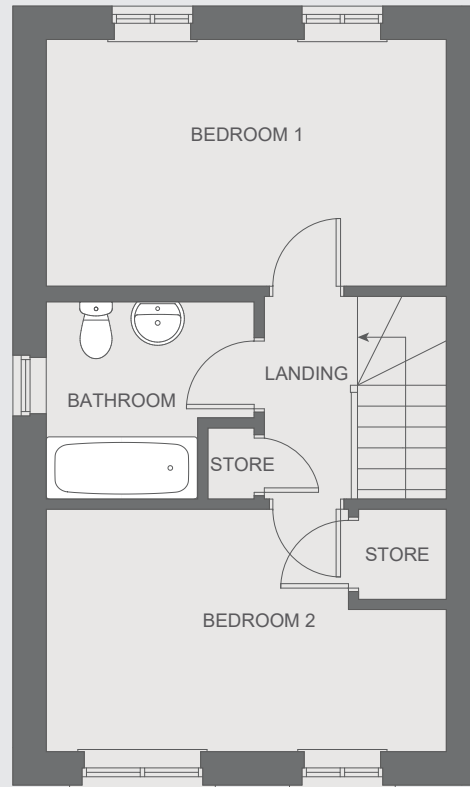
E: contactus@yourpersonahome.com

W: yourpersonahome.com

Jubilee Gardens, Stainton, Penrith, CA11 0EP



Ground floor



First floor

Ground floor

Living room	5.06m x 3.40m
Kitchen/dining	4.50m x 2.77m

First floor

Bedroom 1	4.50m x 2.78m
Bedroom 2	4.50m x 2.73m
Bathroom	2.34m x 2.22m
Total area	72.17 m²



Any floor plans are a general outline of the layout of the property for guidance only. All measurements are approximate and may vary and any intending purchasers should not rely on them as statements of fact or representations of fact but must satisfy themselves by inspection or otherwise as to their accuracy. Dimensions shown are not intended to be relied upon for installation of appliances or items of furniture or otherwise. CGI's and images are for illustrative purposes only. Specifications are subject to change. Images are indicative only and may be of previous developments.*Journey times and distances taken from google.com/ maps and are correct before going to print. All times and distances listed are approximate and may vary depending on time of travel.