



Persona Homes

by Home Group

KINGSWOOD COLLECTION

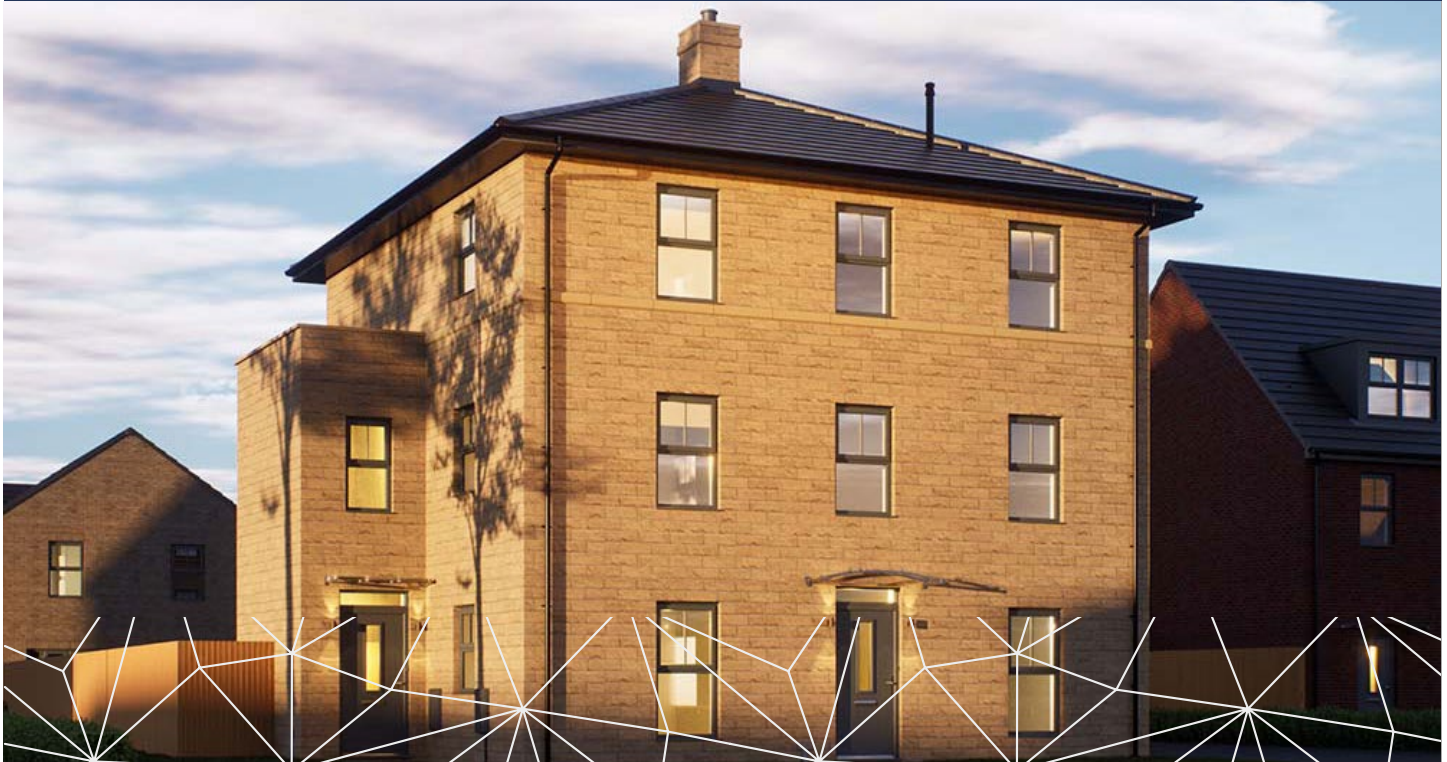
HULL

Barcelona

4-bedroom house

*With lots to offer, the Barcelona is a lovely home
designed for today's modern living.*

The Barcelona is a modern semi-detached home designed with growing families in mind, spread across three floors. The ground floor is all about connecting with your family while the upper floors offer ample personal space for everyone to unwind and relax after a busy day.



Contact us:

T: 0800 030 8888

E: contactus@yourpersonahome.com

W: yourpersonahome.com

Kingsfield Park, Hull, HU7 3LH

Ground floor

Kitchen/dining 4.27m x 3.55m

Living room 5.08m x 3.55m

First floor

Bedroom 3 3.55m x 3.39m

Bedroom 4 3.55m x 3.28m

Bathroom 3.13m x 1.46m

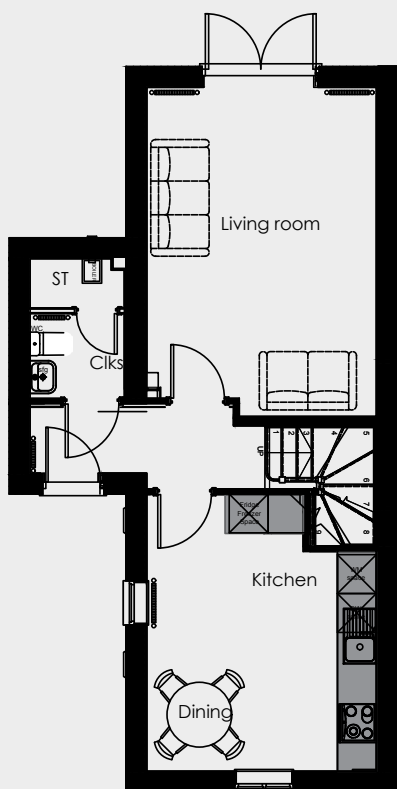
Second floor

Main bedroom 3.57m x 3.28m

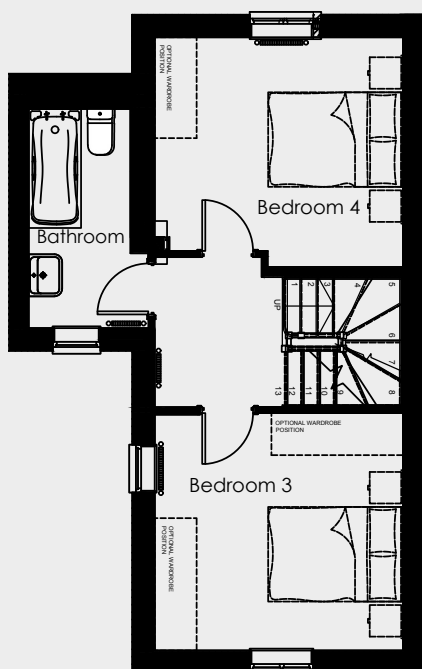
Main bedroom en-suite 2.99m x 0.85m

Bedroom 2 3.54m x 3.39m

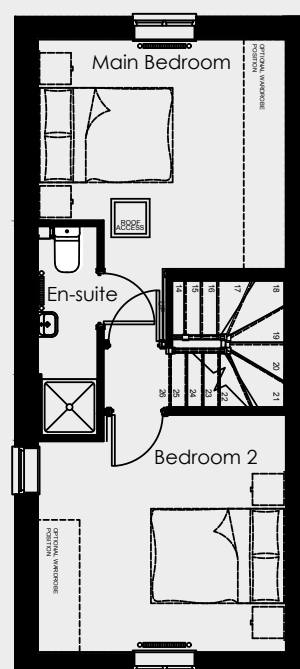
Total floor area 109.8m²



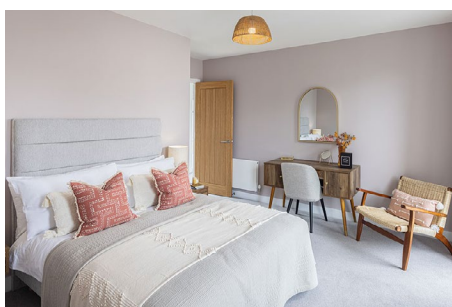
Ground floor



First floor



Second floor



Any floor plans are a general outline of the layout of the property for guidance only. All measurements are approximate and may vary and any intending purchasers should not rely on them as statements of fact or representations of fact but must satisfy themselves by inspection or otherwise as to their accuracy. Dimensions shown are not intended to be relied upon for installation of appliances or items of furniture or otherwise. CGI's and images are for illustrative purposes only. Specifications are subject to change. Images are indicative only and may be of previous developments.*Journey times and distances taken from google.com/ maps and are correct before going to print. All times and distances listed are approximate and may vary depending on time of travel.