



Administrativ organisering

Oversikt over innplasseringsprosess

Fargeforklaringer

Ledere som allerede er ansatt

Lederstillinger som lyses ut 14. januar

Stillinger/avdelinger man innplasseres i etter prosess med å melde inn ønsker

Stillinger/avdelinger som består slik de er i dag – ansatte får automatisk tilsendt ny kontrakt

Annet – bokser som beskriver noe annet enn stillinger/avdelinger

Noen bokser er delt i 2 farger. Det betyr at lederstillingen er i en prosess, mens de ansatte havner i en annen prosess. For eksempel:

Leder

Øvrige ansatte

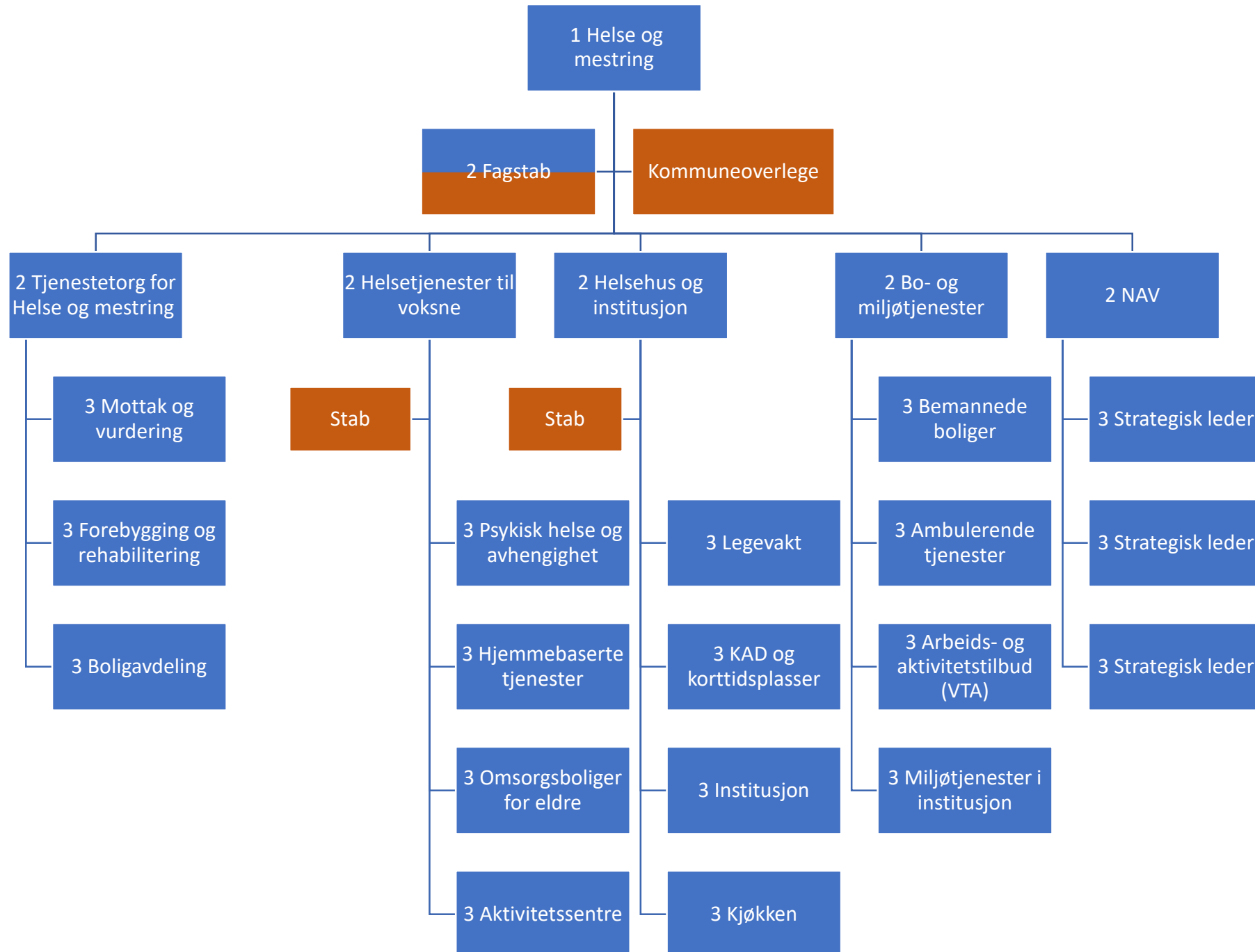
Leder

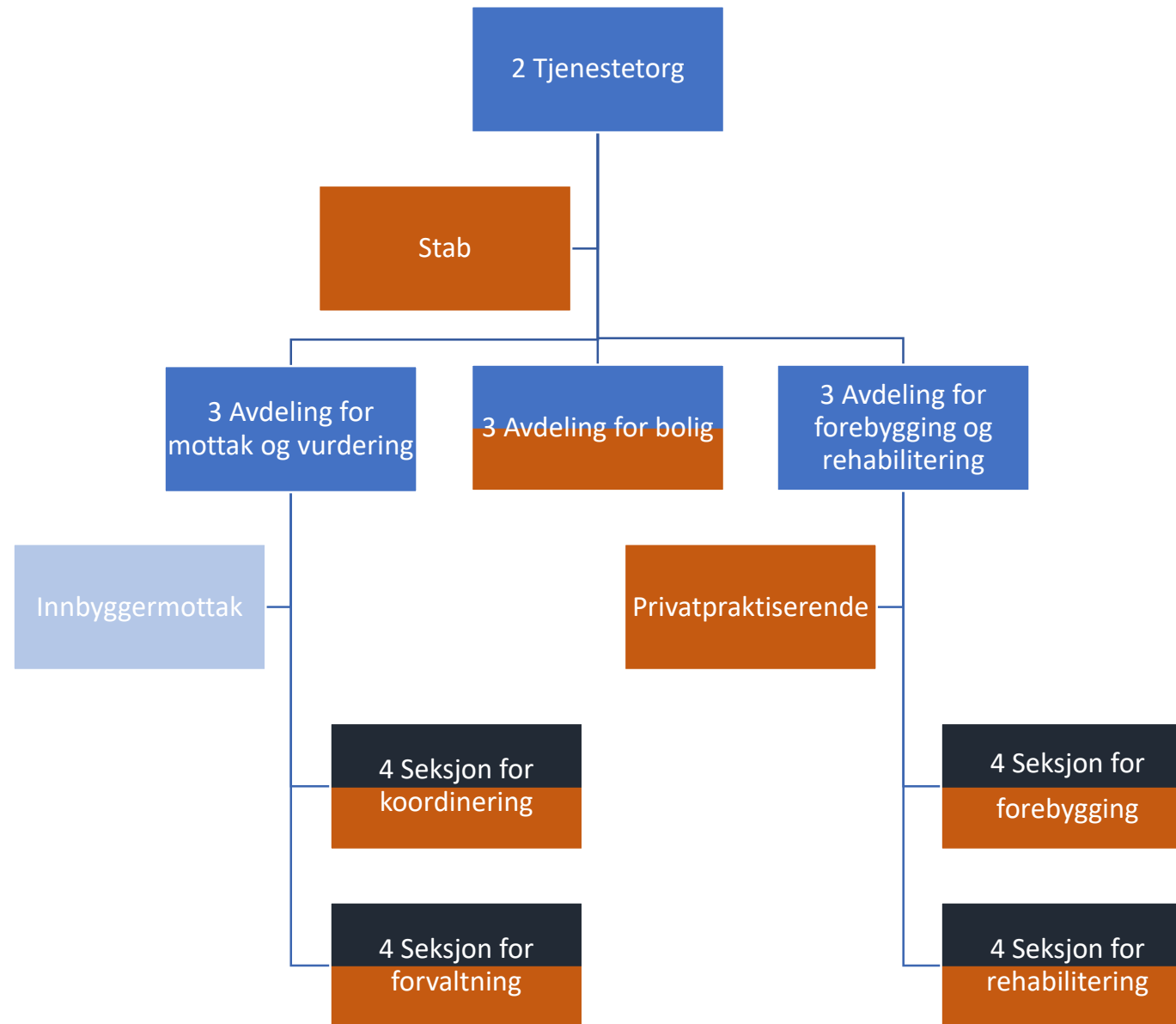
Øvrige ansatte



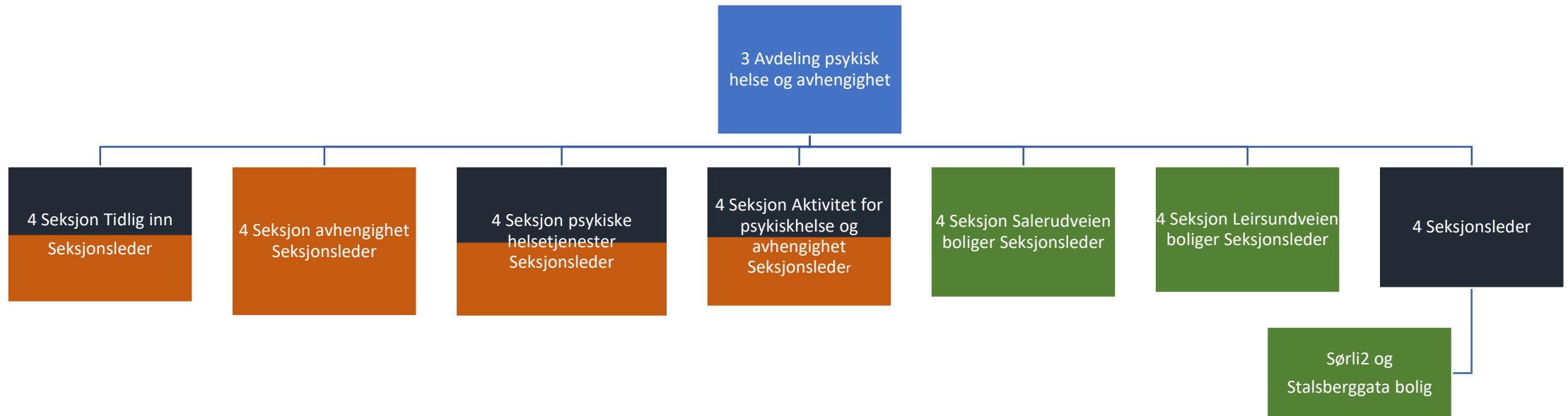


Helse og mestring

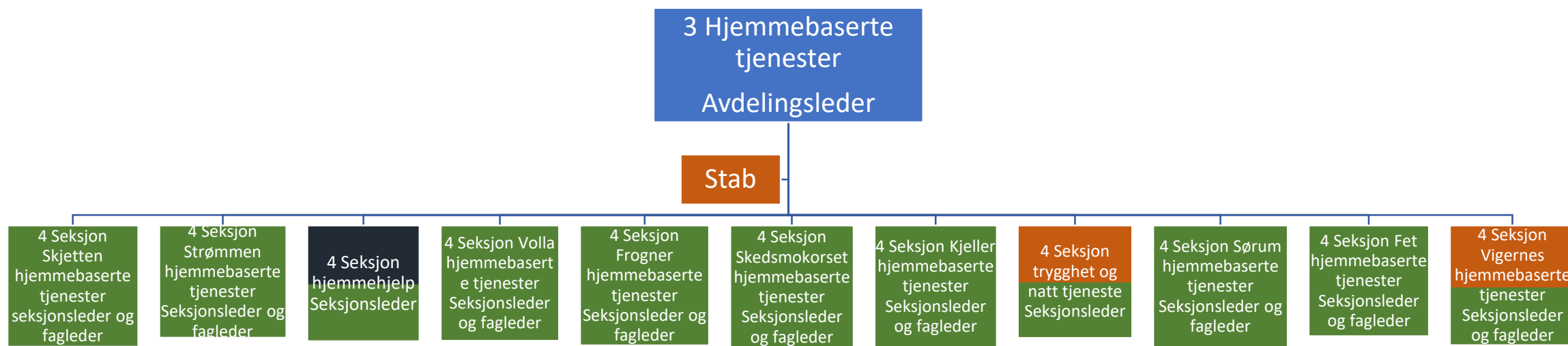




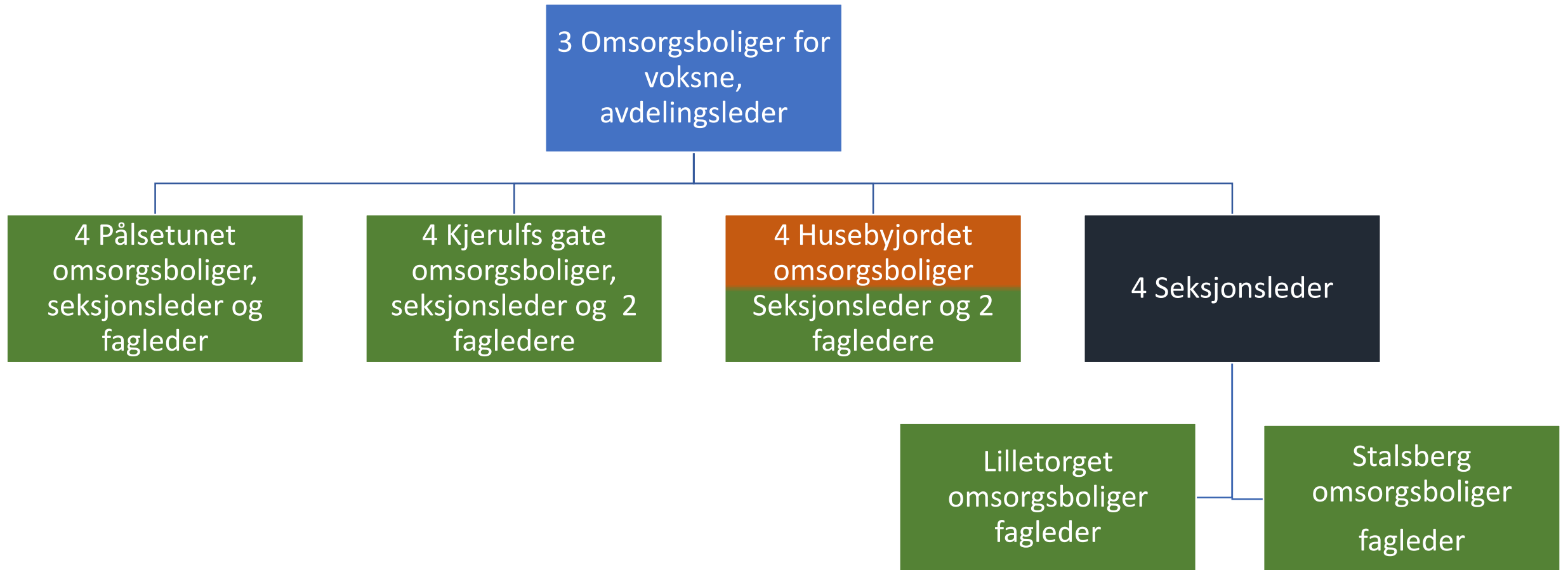
2 Helsetjenester til voksne



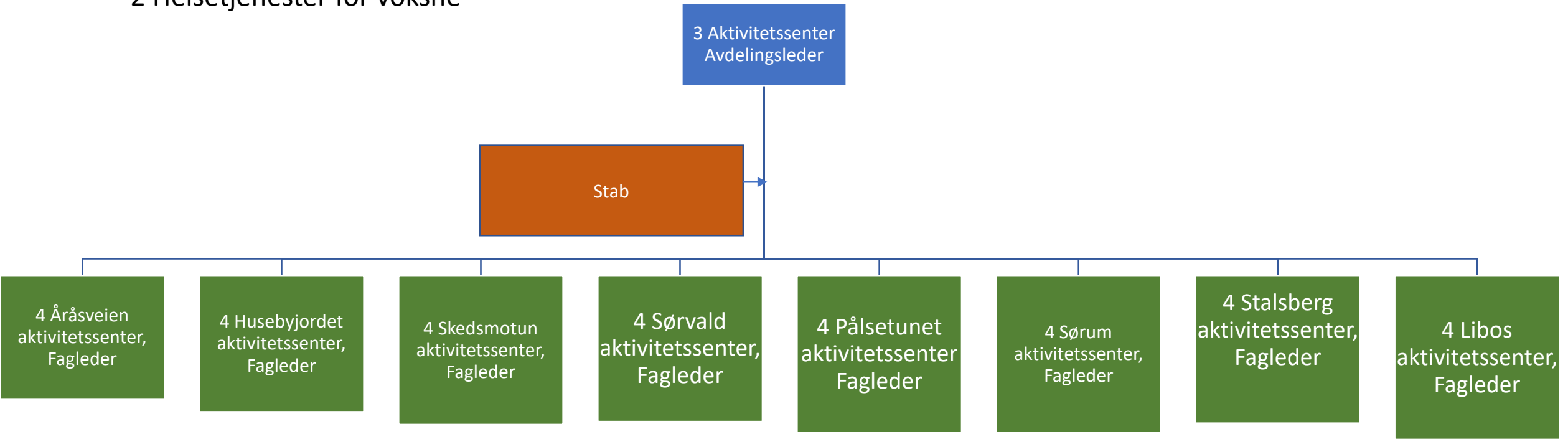
2 Hjemmetjenester til voksne



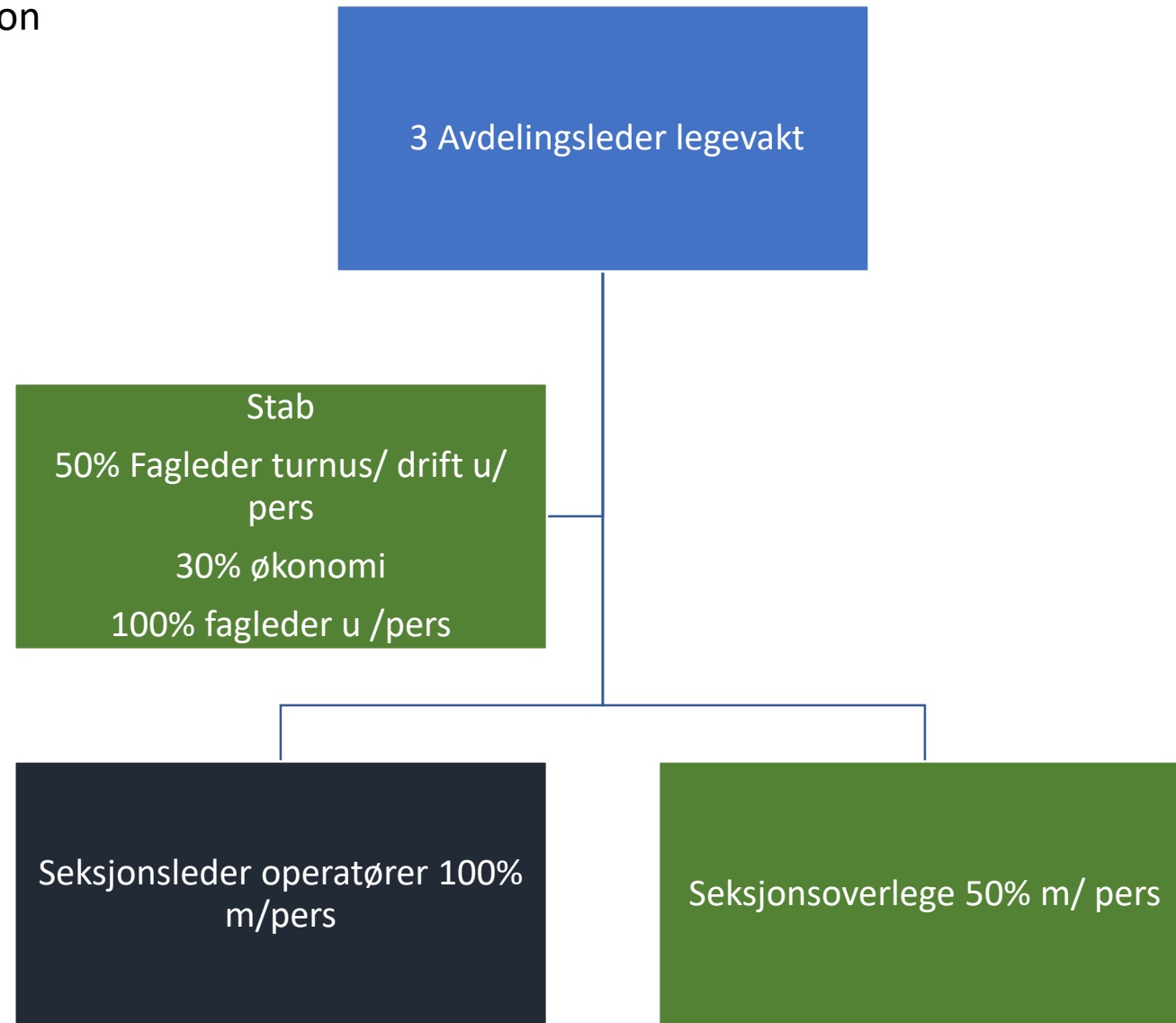
2 Helsetjenester til voksne



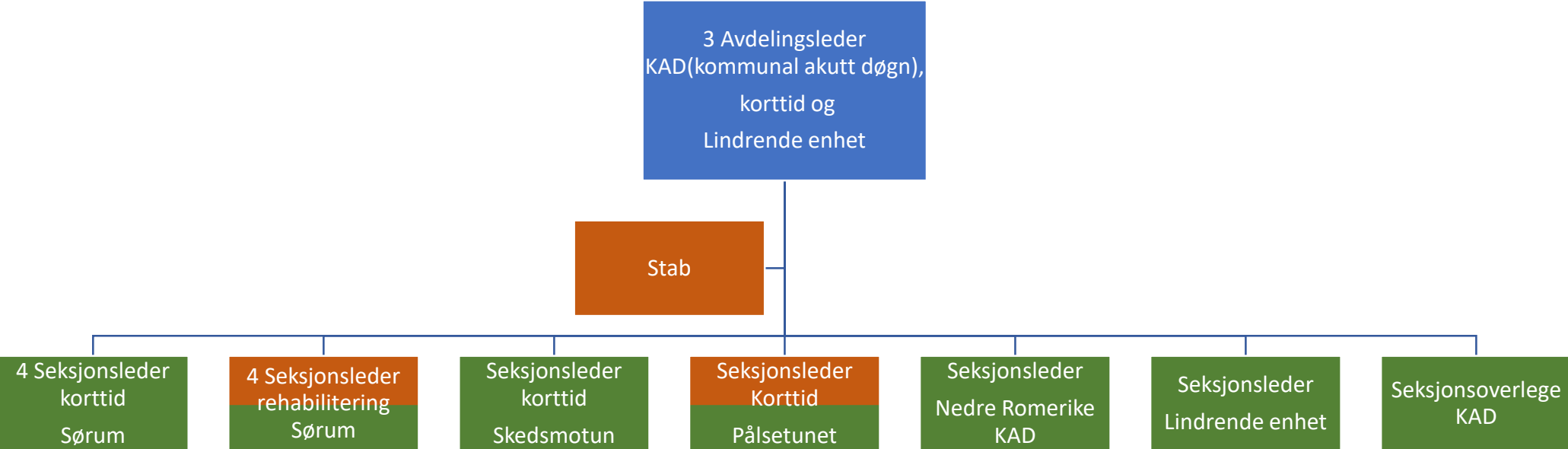
2 Helsetjenester for voksne



2 Helsehus og institusjon



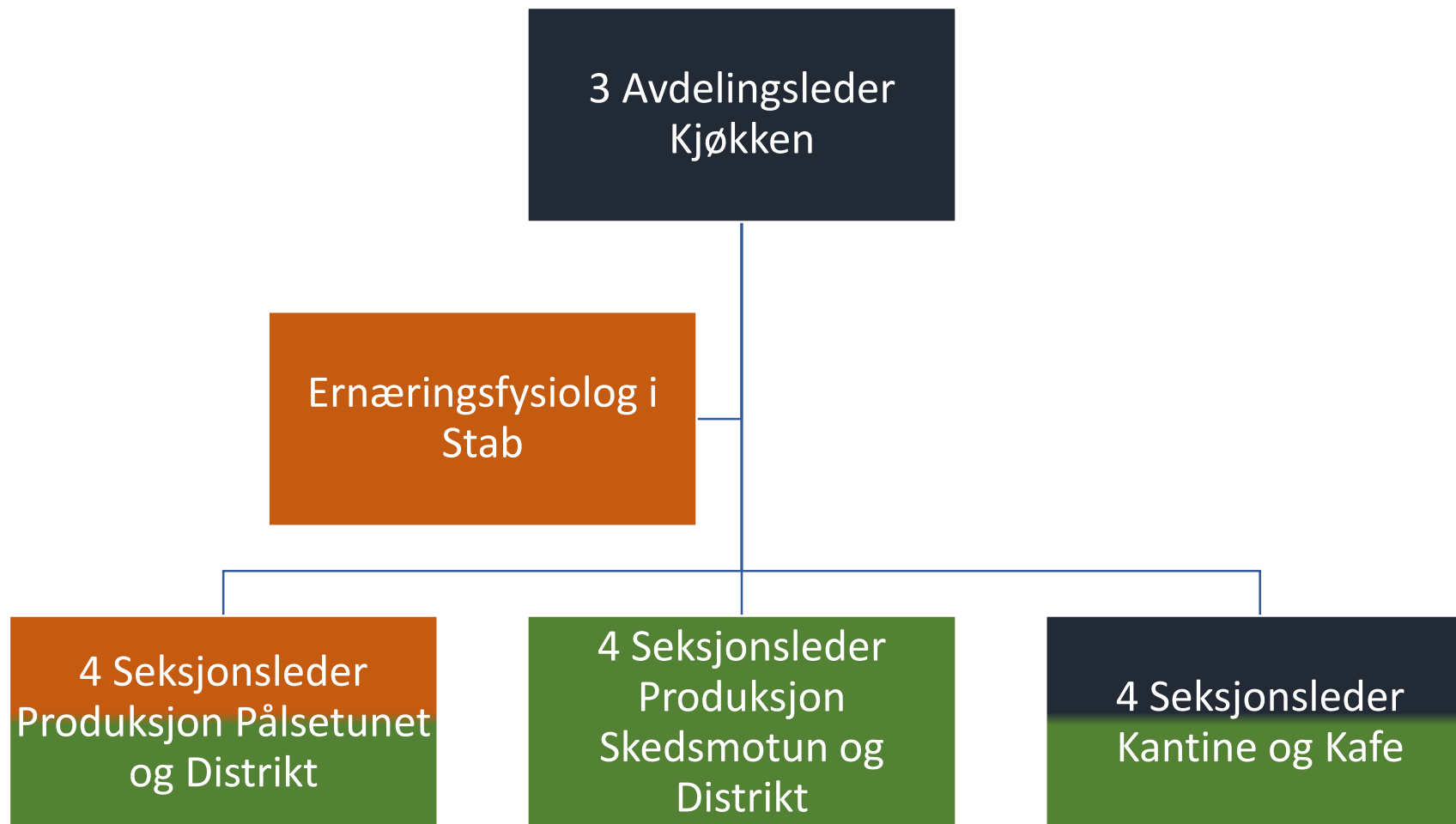
2 Helsehus og institusjon



2 Helsehus og institusjon

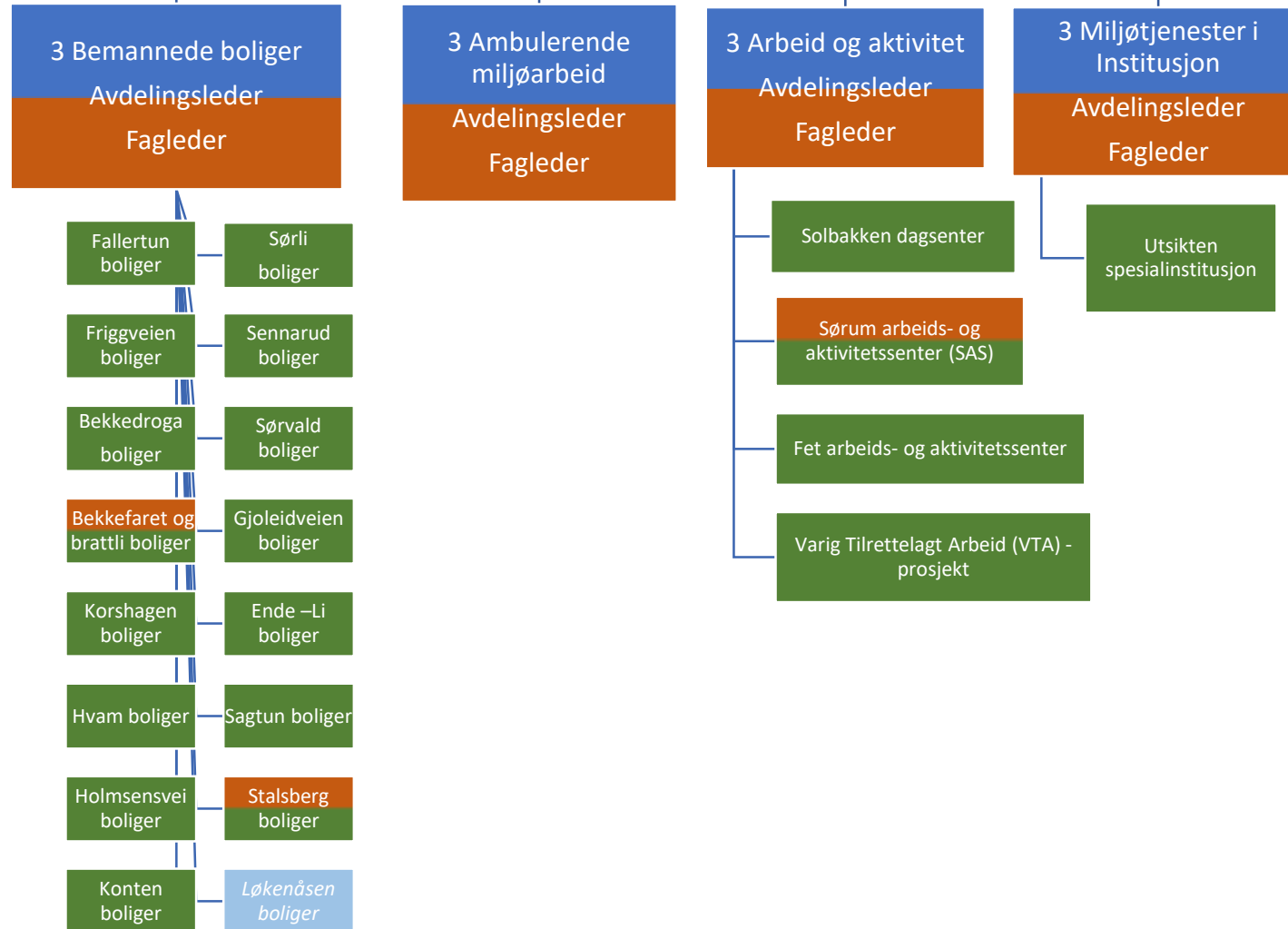


2 Helsehus og institusjon



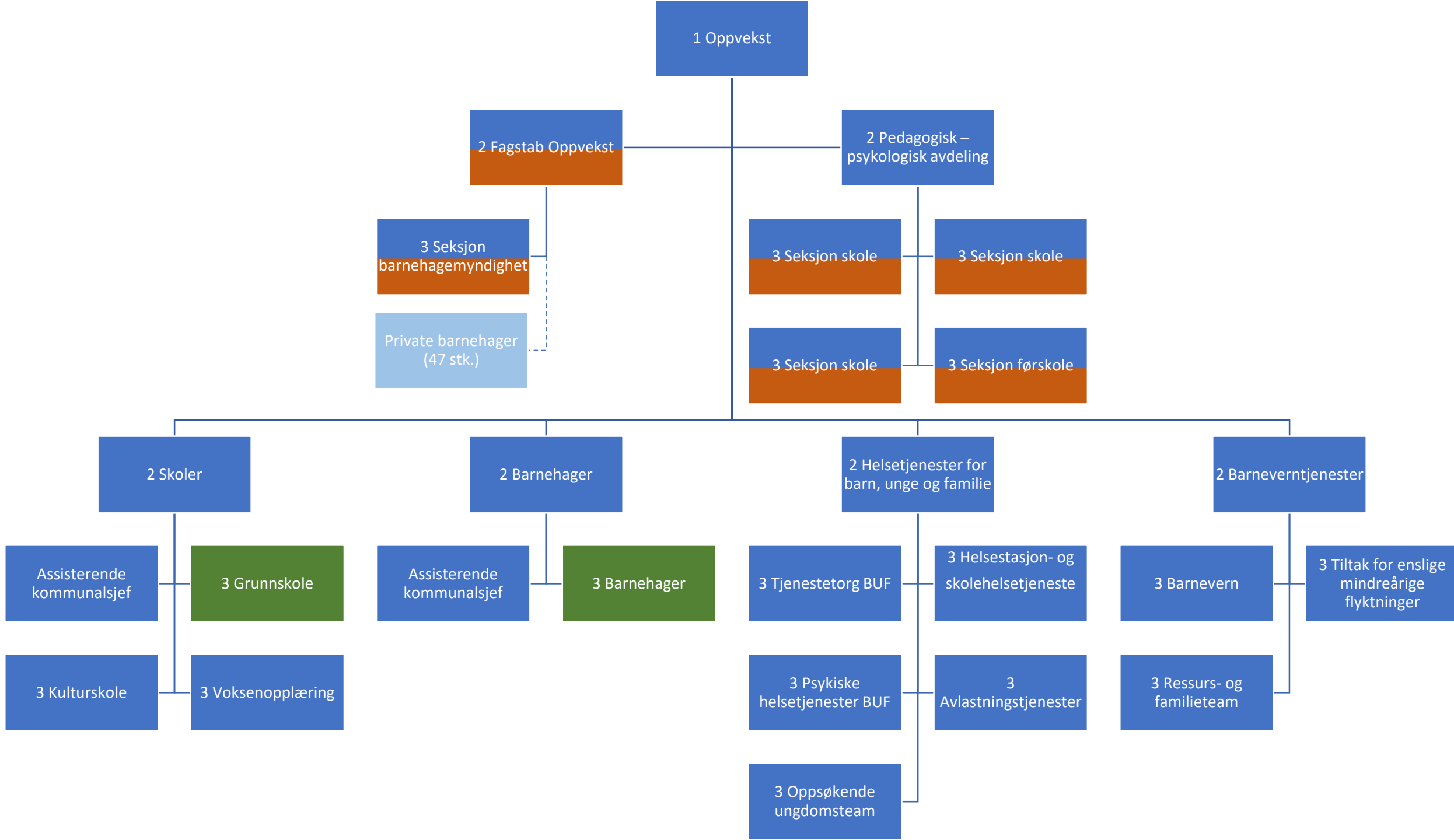
2 Bo – og miljøtjenester

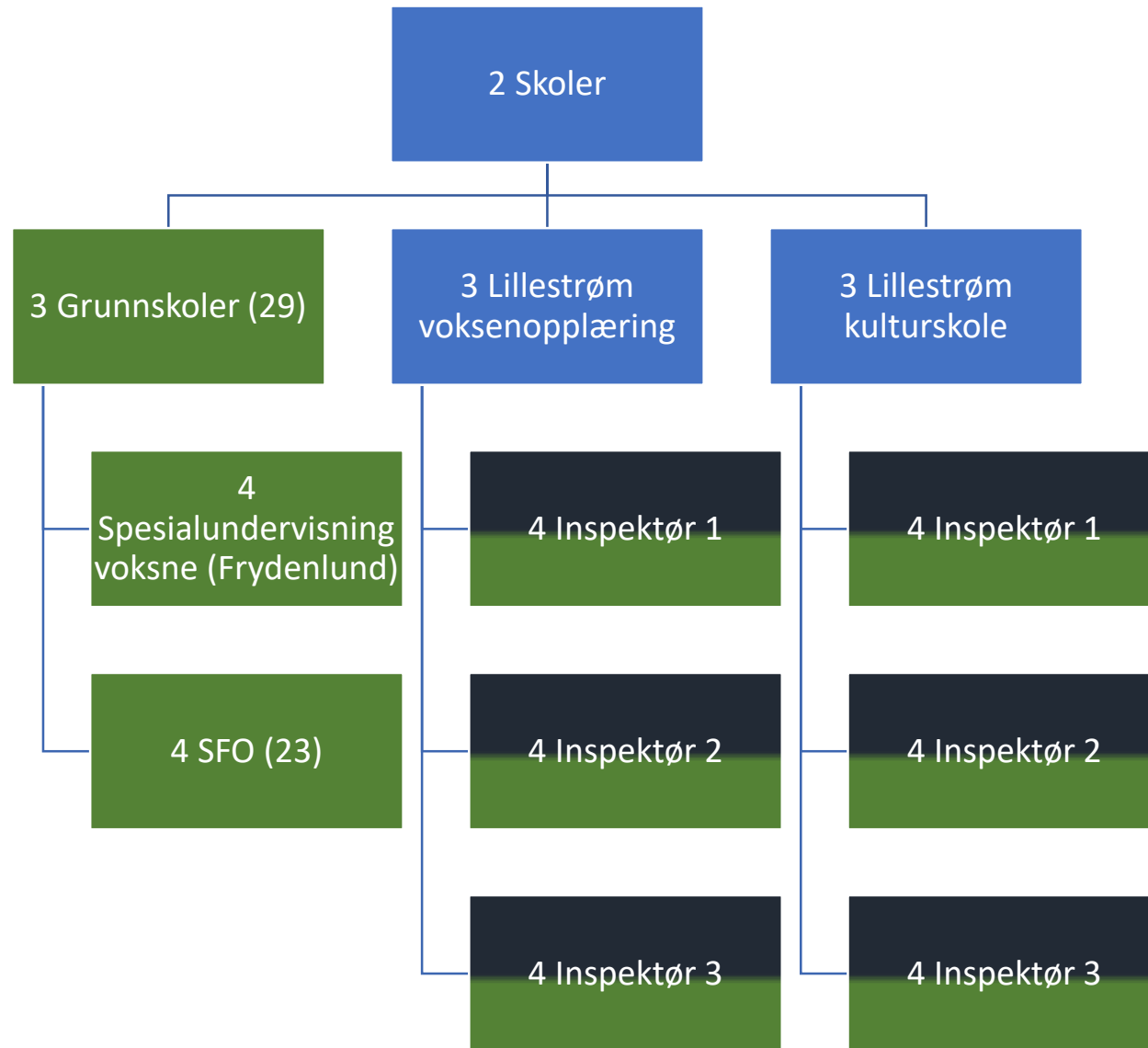
Fagrådgiver

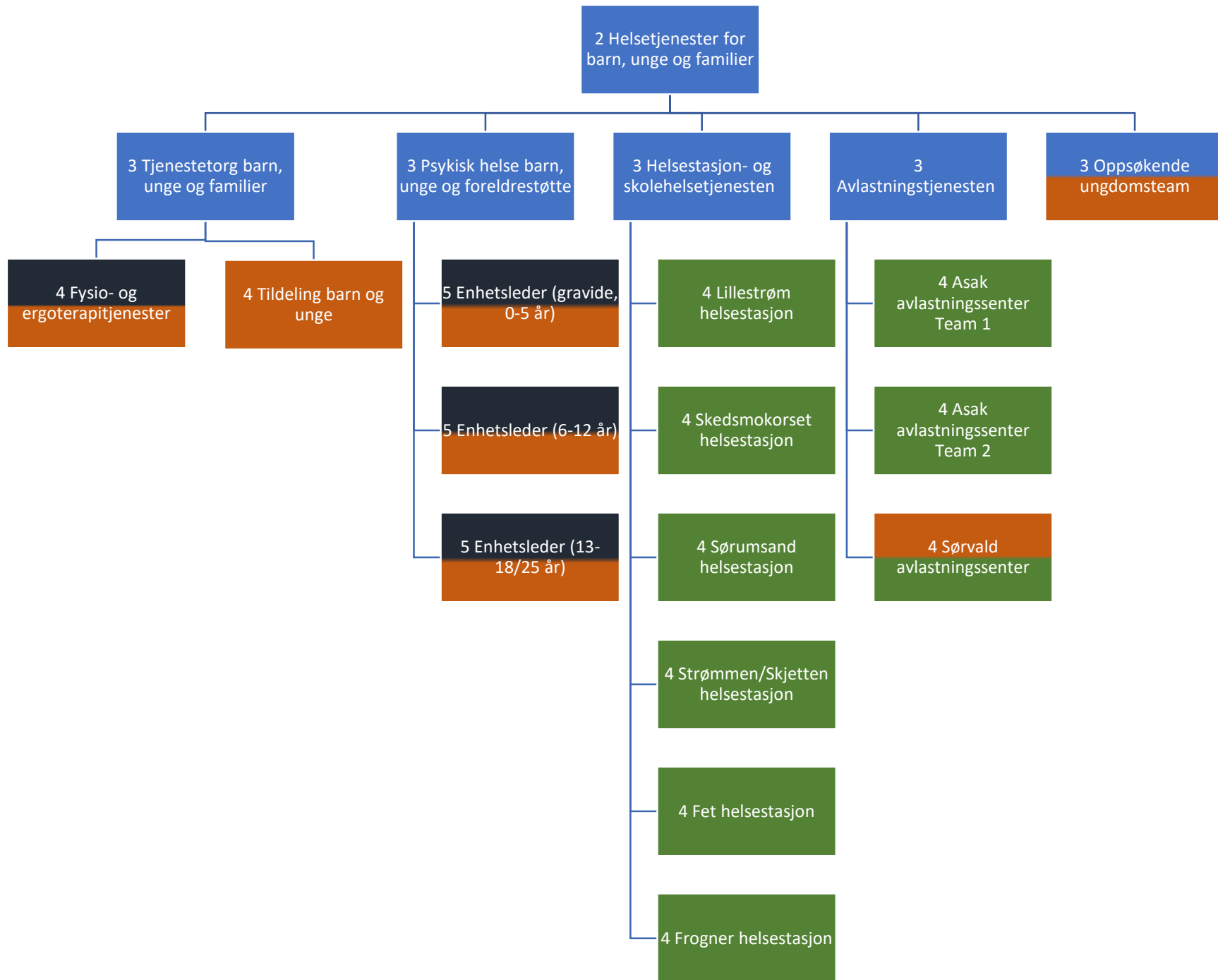


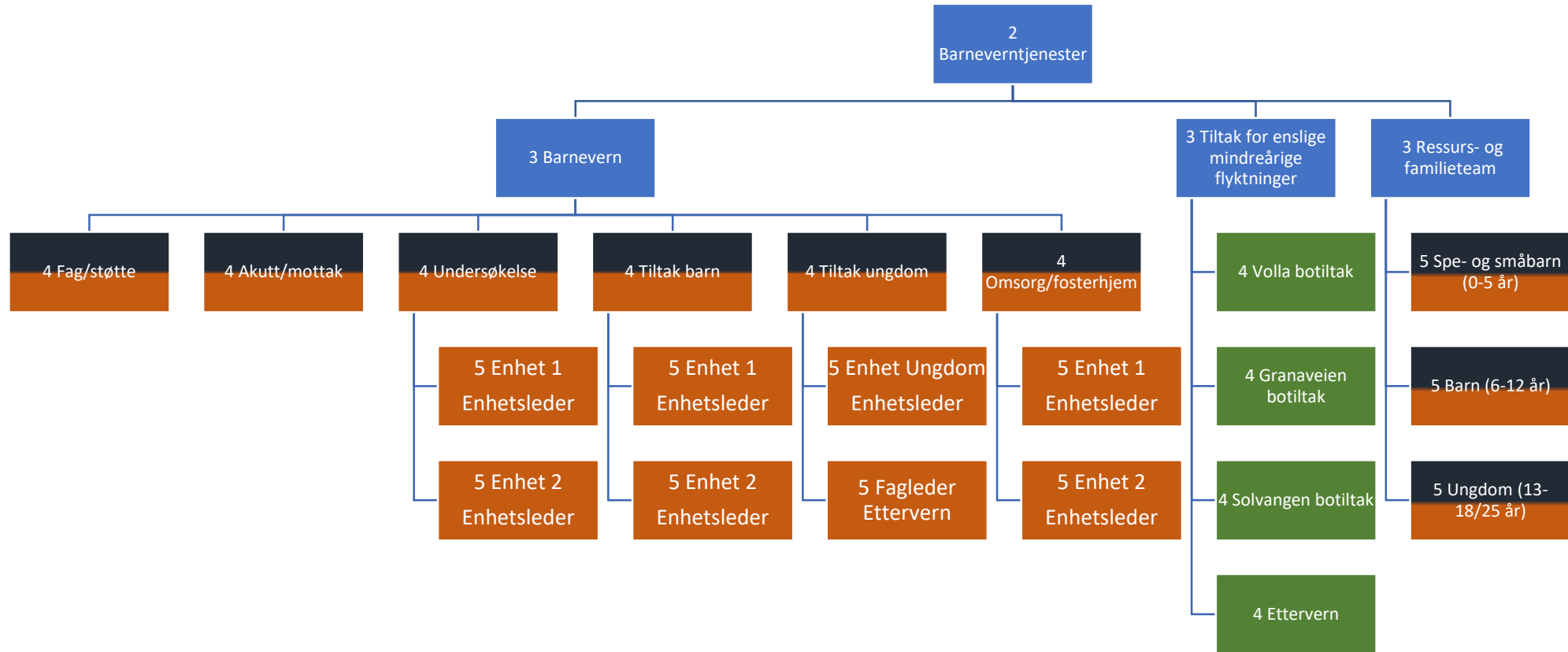


Oppvekst



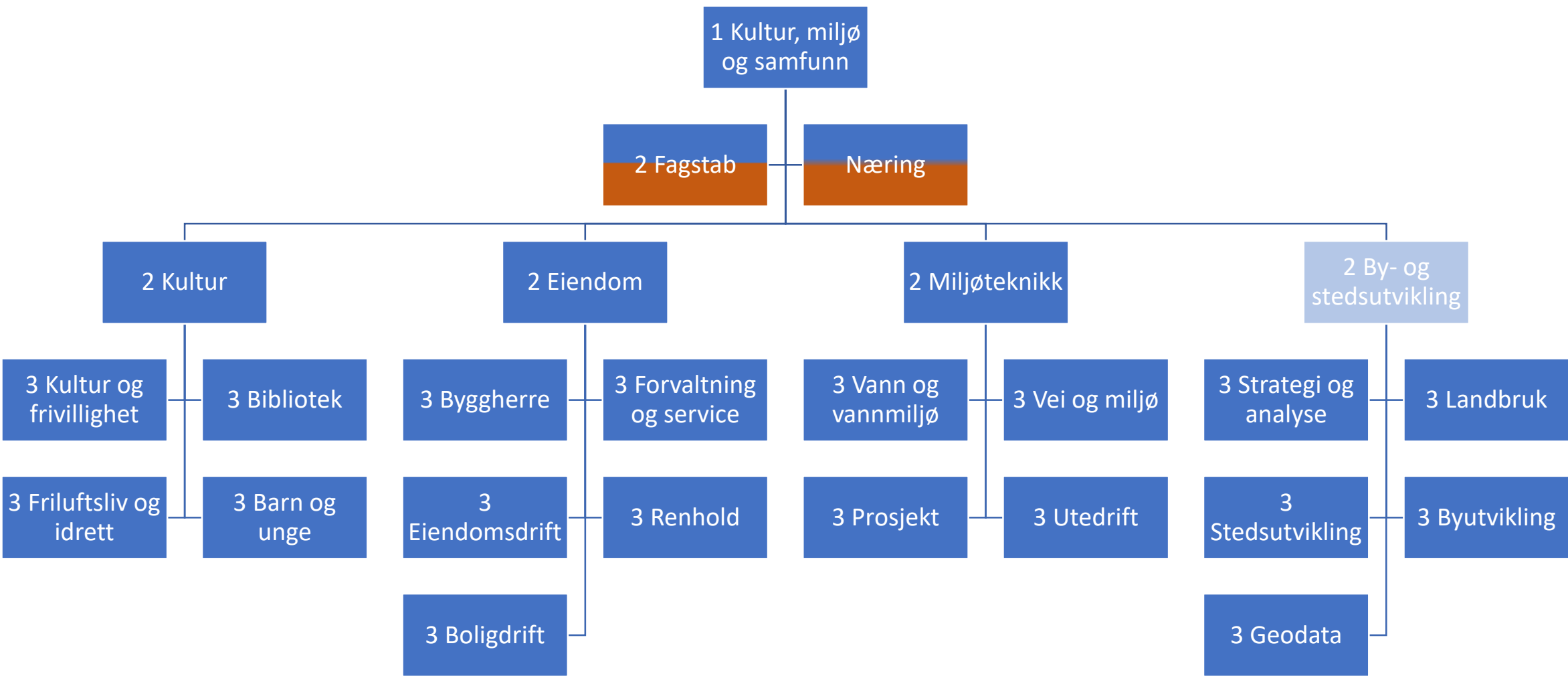


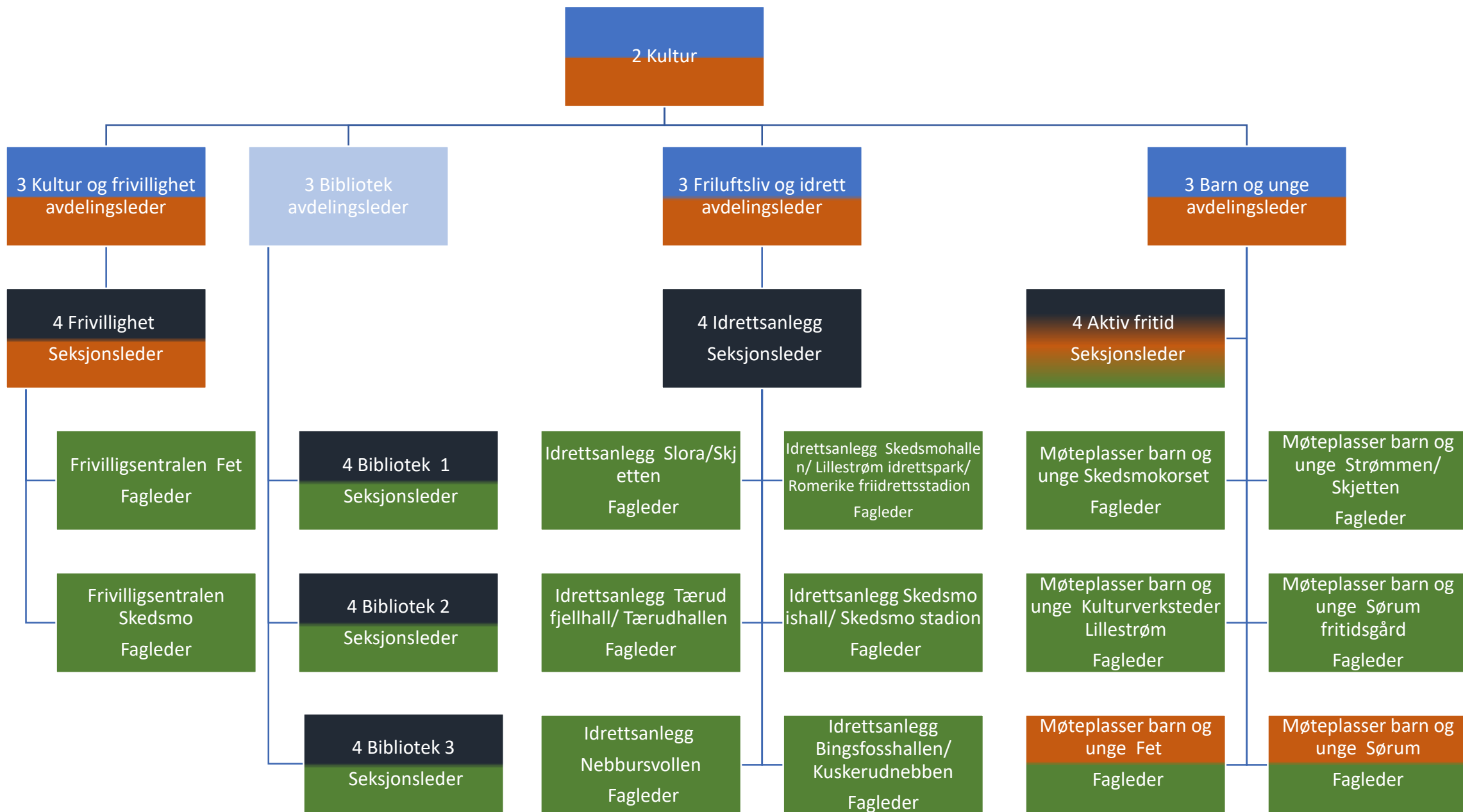


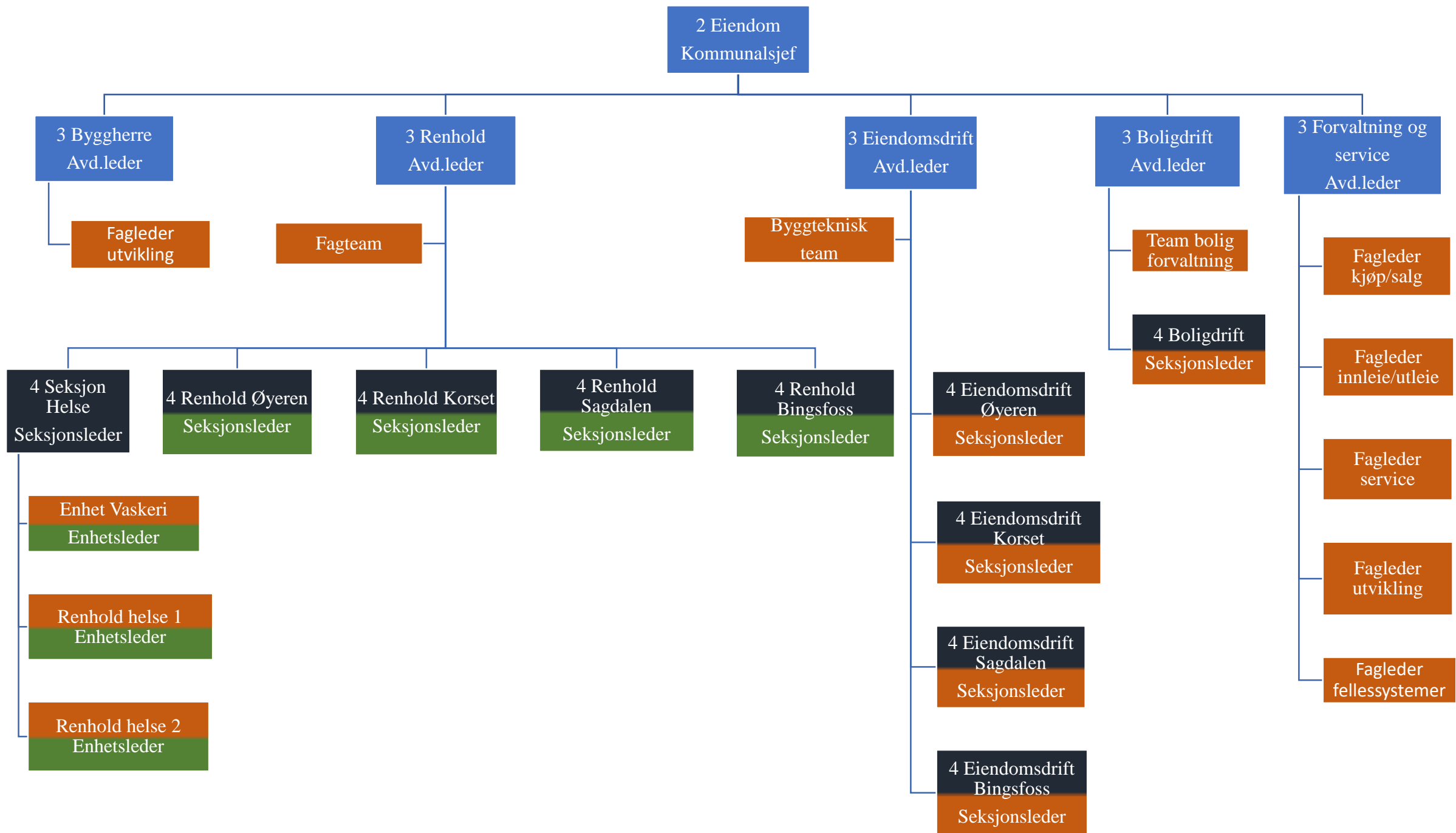




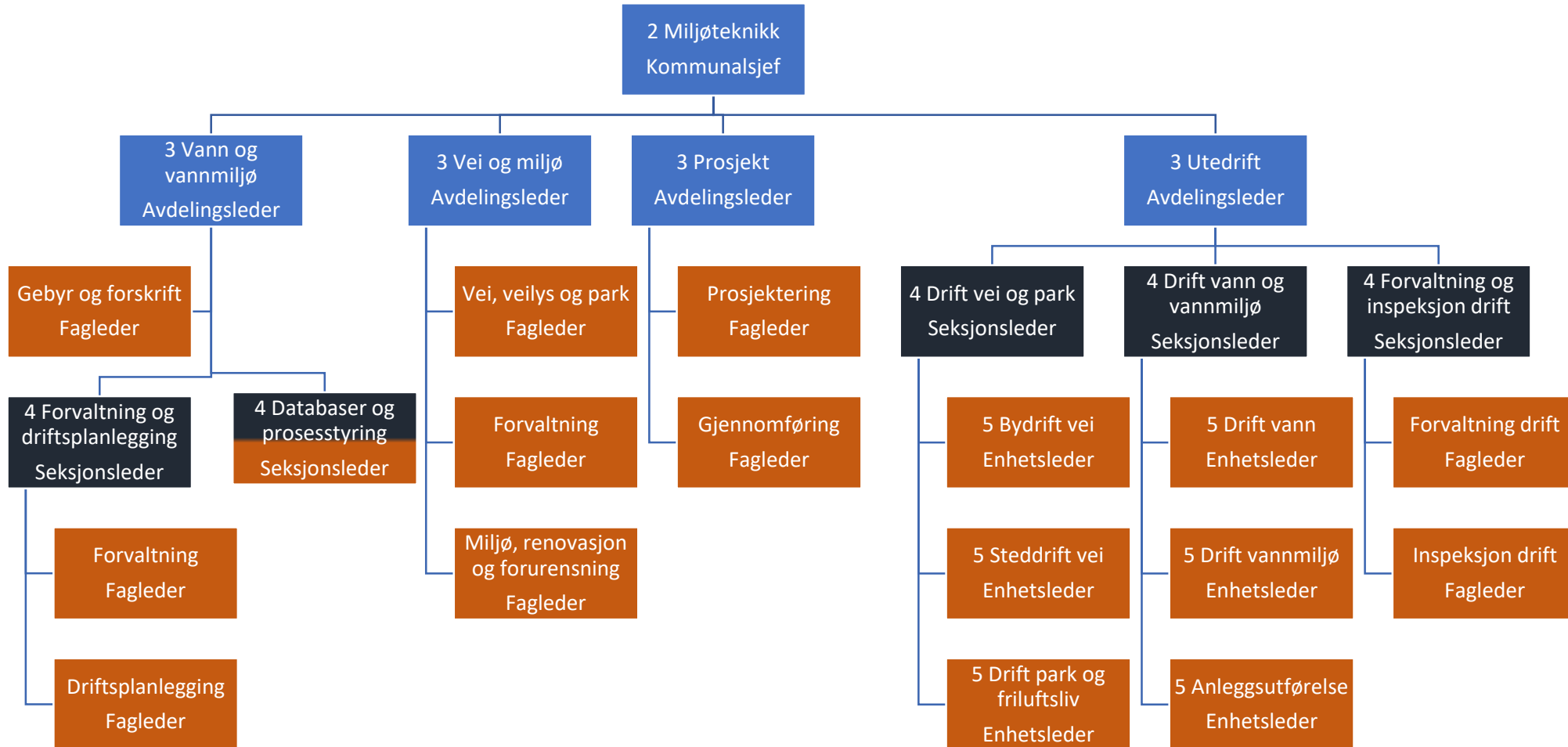
Kultur, miljø og samfunn

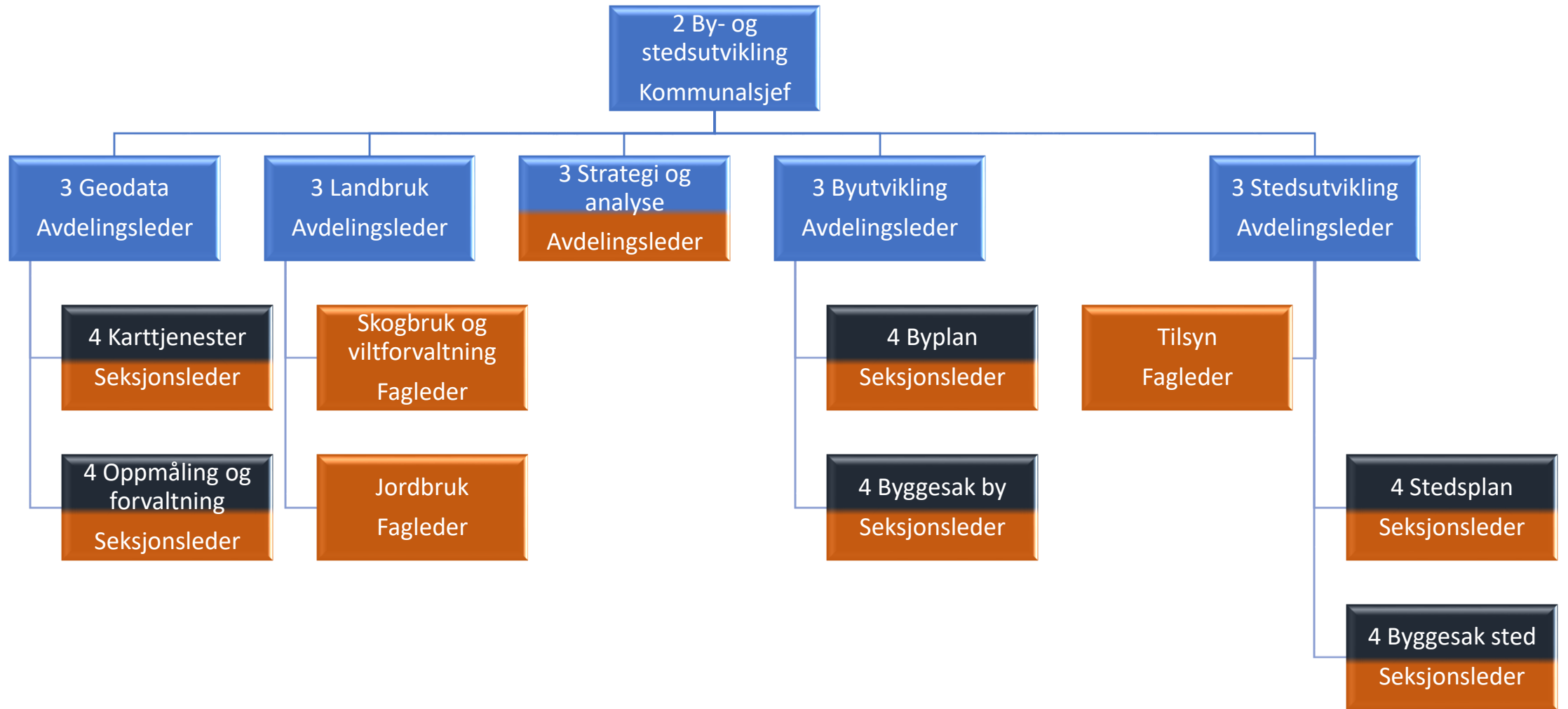






Organisering Miljøteknikk







Stabsavdelingene

