

Soulmate Twin Flame Sketch: Discover Your Spiritual Mirror and True Love

Uncover the face of your destined partner through a personalized psychic portrait that reveals not just their appearance, but the very essence of your soul's deepest connection.

Order Your Sketch Now

[CLICK HERE TO CHECK DISCOUNTED PRICE \(24HRS LIMITED OFFER\)](#)



1 + 1: Order your Soulmate Sketch and get your Twin Flame Sketch absolutely FREE.

NORMALLY: \$147

You Pay Only:

\$37

[CLAIM MY FREE BONUS NOW →](#)

The Mystical Art of Soulmate and Twin Flame Sketches

For centuries, spiritually gifted artists have connected with the universe's energy to visualize destined connections. Today, this ancient practice has evolved into a powerful tool for those seeking their true spiritual partner.

Soulmate and twin flame sketches serve as a bridge between the physical and spiritual realms, offering seekers a tangible glimpse of their most profound cosmic connection. These aren't mere drawings—they're energetic portals that can accelerate your journey toward divine union.

When you receive your sketch, you're not just seeing a face—you're witnessing the culmination of psychic insight, spiritual channeling, and artistic interpretation designed to help you recognize your destined partner when they cross your path.

Recognition

Helps you identify your soulmate or twin flame when they appear in your life

Confirmation

Validates your intuitive feelings about potential connections

Preparation

Prepares your heart and spirit for the profound meeting to come

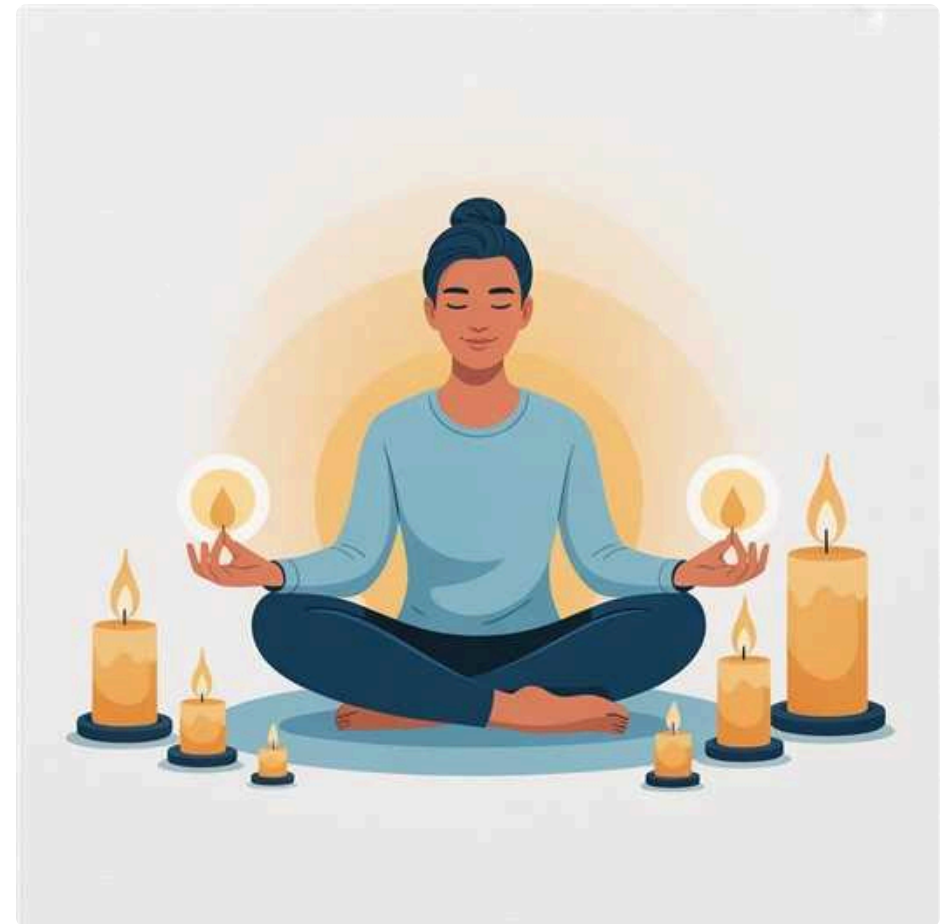
[CLICK HERE TO CHECK DISCOUNTED PRICE \(24HRS LIMITED OFFER\)](#)

What Is a Soulmate Sketch?

A soulmate sketch is a spiritual portrait created by psychically gifted artists who tap into your personal energy field to visualize your destined partner. Using your name, birth date, and sometimes a personal question, these artists meditate on your energy to connect with the essence of your soulmate.

Each sketch comes accompanied by a detailed psychic reading that delves into your soulmate's personality traits, values, and the potential timing of your meeting. This spiritual roadmap serves as both guidance and confirmation, helping you recognize your destined partner when they appear in your life's journey.

Many recipients report a profound emotional response upon viewing their sketch—a recognition that transcends the physical, touching something deep within their soul.



Personalized

Created specifically for you based on your unique energy signature

Revealing

Uncovers physical and spiritual attributes of your destined partner

Guiding

Provides insight to help navigate your path toward true connection

[CLICK HERE TO CHECK DISCOUNTED PRICE \(24HRS LIMITED OFFER\)](#)

Understanding Twin Flame Sketches

Twin flame sketches delve deeper than soulmate portraits, capturing the essence of your "mirror soul"—the other half of your spiritual being with whom you share an intense, magnetic bond that transcends ordinary connection.

Unlike soulmates, who may appear multiple times throughout your life, a twin flame represents your single most profound soul connection. The relationship is often characterized by intense passion, challenging growth catalysts, and a sense of coming home when you're together.

The Creation Process

Twin flame sketches emerge through a sacred blend of meditation, psychic channeling, and artistic interpretation. The psychic artist enters a trance-like state to access higher dimensions where twin flame energies reside. Through this spiritual attunement, they capture not just physical features but the ethereal quality that makes this connection uniquely powerful.

Beyond Physical Appearance

While the sketch portrays recognizable features, its true value lies in capturing the spiritual essence and energy signature of your twin flame. The artist often incorporates subtle symbols and energy patterns that represent your mirrored qualities, shared soul purpose, and the transformative journey you're destined to experience together.

The Invisible Bond Made Visible

Every soul connection leaves an energetic imprint in the universe. Psychic artists have the rare ability to translate these invisible spiritual threads into visual form, making tangible what most can only feel. Through careful attunement to your unique energy signature, these gifted individuals can bring forth an image of the face you've been searching for—perhaps even before you knew you were looking.

The sketch serves as a bridge between dimensions, connecting you to possibilities that exist beyond the limitations of time and space. Many recipients report feeling an immediate, visceral recognition when they first view their soulmate or twin flame sketch—a heart-opening moment that confirms what their soul has always known.

"The moment I saw my sketch, something deep within me stirred to life. Three months later, I met him at a friend's gathering—the same eyes, the same gentle smile. I knew instantly."

— Sophia, 34

How Psychic Artists Create These Sketches



The creation of a soulmate or twin flame sketch is a deeply spiritual process that combines multiple metaphysical practices. When you submit your details, the artist begins by centering themselves through meditation, creating a sacred space where higher guidance can flow.

Using your full name and birth date as energetic anchors, the psychic artist connects with your unique vibrational signature. Many practitioners report entering a trance-like state where they can perceive images, impressions, and sometimes even hear messages about your destined partner.

Some artists enhance their connection through the use of crystals, tarot cards, or pendulums, which serve as tools to clarify and refine the information they receive. The entire process is approached with reverence, acknowledging the sacred nature of soul connections.

Connection

Artist meditates on your personal details to establish an energetic link

Channeling

Visions and impressions of your soulmate/twin flame emerge through psychic intuition

Translation

Spiritual insights are transformed into visual art with meaningful symbolism

The Difference Between Soulmates and Twin Flames

Soulmates

Soulmates represent souls with whom we share a deep affinity and purpose. We may encounter multiple soulmates throughout our lifetime, each arriving to teach specific lessons or share particular experiences. These connections can be romantic, but they're often found in close friendships, mentorships, or family relationships as well.

Soulmate connections feel comfortable, supportive, and nurturing. They help us heal, grow, and experience love in its many forms. While deeply meaningful, these relationships typically don't challenge us to the same degree as twin flame connections.

Understanding which connection you're seeking helps determine which type of sketch will best serve your spiritual journey. Both paths offer profound growth and love, though in distinctly different ways.

Twin Flames

A twin flame represents your soul's other half—literally created from the same soul energy. This singular connection is characterized by intense magnetism, profound recognition, and often turbulent growth cycles. Twin flames mirror our deepest wounds, forcing us to confront our shadows while also reflecting our highest potential.

The twin flame journey follows distinct phases, including an often challenging separation period that catalyzes tremendous spiritual awakening. When reunited in a balanced state, twin flames can achieve extraordinary harmony and may share a significant spiritual mission.

What Your Sketch Reveals Beyond Appearance

A soulmate or twin flame sketch offers far more than a mere physical representation. These spiritual portraits serve as multidimensional windows into the essence of your destined connection, revealing layers of insight that extend well beyond facial features or physical attributes.

Soul Purpose

The sketch often reveals subtle clues about your soulmate's or twin flame's life mission and how it intertwines with your own spiritual journey. Artists may include symbolic elements that represent shared soul contracts or divine purposes you're meant to fulfill together.

Emotional Landscape

Through the eyes, expression, and energetic qualities captured in the drawing, you'll gain insight into your future partner's emotional nature—their capacity for empathy, emotional depth, and how they process feelings and experiences.

Timing & Circumstances

Many psychic artists include intuitive information about when and where you might encounter this person. Background elements, symbols, or the accompanying reading often provide clues about the timing and circumstances of your eventual meeting.

Growth Catalysts

The sketch may reveal aspects of how this connection will challenge and transform you. For twin flames especially, the portrait often contains subtle indicators of the specific growth edges and spiritual lessons this relationship will activate.

Many recipients report that these deeper insights prove even more valuable than the physical likeness, as they provide a roadmap for preparing yourself spiritually and emotionally for this profound connection.

Real Stories: When Sketches Met Reality

The true power of soulmate and twin flame sketches becomes evident in the countless stories of recipients who later encountered the very person depicted in their drawing. These remarkable accounts span cultures and continents, sharing a common thread of astonishment and validation.

"I kept my sketch in a drawer for nearly a year, occasionally looking at it but not expecting much. Then at a conference in Chicago—a city I rarely visit—I met him. The resemblance to my sketch was uncanny, right down to the distinctive way he smiled. Six months later, we were engaged."

— Rachel, 29

"After my divorce, I felt spiritually and emotionally depleted. The twin flame sketch gave me hope when I needed it most. The reading described someone creative and patient—qualities I hadn't valued before. When I met Mark through a volunteer program, I recognized him immediately from the sketch. Our connection has healed parts of me I didn't know were broken."

— Grace, 42

While skeptics might attribute such matches to coincidence or the power of suggestion, many recipients describe a visceral, intuitive recognition that goes beyond physical resemblance—a soul-level knowing that transcends logical explanation.

How to Order Your Personalized Sketch

Receiving your own soulmate or twin flame sketch is a straightforward process designed to create the strongest possible energetic connection between you and the psychic artist. Each step is crafted to ensure the most accurate and meaningful portrait possible.

Choose Your Provider

Research reputable psychic artists who specialize in soulmate or twin flame sketches. Look for those with verified testimonials and clear examples of their work.

Submit Your Details

Provide your full name, date of birth, and any specific questions you have about your connection. Some artists may request a recent photo of you (not to draw you, but to connect with your energy).

Select Your Package

Most services offer options ranging from basic black and white sketches to detailed color portraits with comprehensive readings. Choose the option that resonates with your needs and budget.

Optional Preferences

You may specify preferences such as gender if you have a strong sense of who you're seeking, though many practitioners recommend remaining open to the universe's guidance.

After submitting your order, most artists deliver your personalized sketch and reading within 24-48 hours via email or digital download. Physical copies may also be available for an additional fee. The entire process is designed to be both accessible and deeply meaningful, providing you with a tangible connection to your spiritual journey.

What to Expect From Your Reading

Your soulmate or twin flame sketch arrives accompanied by a personalized psychic reading that provides context and deeper meaning to the portrait. This written interpretation serves as a spiritual guide, offering insights that may not be immediately apparent from the visual alone.

The reading typically begins with a description of your destined partner's core personality traits—their emotional tendencies, communication style, values, and spiritual orientation. Many artists include specific details about career paths, passions, or life experiences that shape who they are.

Beyond personality insights, your reading will often explore the dynamic between you and your soulmate or twin flame. This includes the lessons you'll learn together, challenges you may face, and the unique growth this connection will catalyze in your life.

Many readings also include guidance on preparing yourself for this profound meeting, suggesting spiritual practices, mindset shifts, or healing work that may help align you with this destined connection.



- ❑ Readings typically range from 1-5 pages depending on the package selected, with premium options offering more comprehensive spiritual insights.

Common Questions Answered



Are these sketches accurate?

Many recipients report striking similarities between their sketch and the person they eventually meet. The level of accuracy varies by artist and connection strength, but testimonials frequently mention uncanny resemblances in key features like eyes, smile, or overall energy. Remember that some aspects may be symbolic rather than literal.



What if I already have a partner?

A sketch can still provide valuable insights if you're already in a relationship. It may confirm your current partner is indeed your soulmate/twin flame, reveal a deeper connection yet to develop with them, or in some cases, indicate a future connection with someone else. Use the information for self-reflection rather than making hasty decisions.



Is there a satisfaction guarantee?

Most reputable services offer a satisfaction guarantee, typically allowing refund requests within 30 days if you feel the sketch and reading don't resonate with you. Check the specific terms of your chosen provider, as policies vary. The most ethical practitioners prioritize authentic connections over profit.

Remember that while these sketches can provide profound guidance, they're most effective when approached with an open mind and heart. They serve as tools for your spiritual journey rather than absolute predictions, empowering you to recognize opportunities for deep connection when they arise.

[CLICK HERE TO CHECK DISCOUNTED PRICE \(24HRS LIMITED OFFER\)](#)

The Role of Intuition and Energy in Psychic Art

At the heart of soulmate and twin flame sketches lies the ancient practice of intuitive art—a process that transcends conventional creativity to access deeper realms of knowing. Psychic artists develop their abilities through years of practice, learning to distinguish between imagination and genuine intuitive impressions.

During the creation process, these artists enter an altered state of consciousness sometimes described as a "flow state" or light trance. In this receptive condition, they become channels for information that exists beyond the five physical senses, tapping into what quantum physicists might call the field of infinite possibilities.

Energy plays a crucial role in this process. Every individual emits a unique energetic signature—a combination of frequencies that reflects their soul's essence. Skilled psychic artists can attune to these subtle energies using your name and birth date as access points. They then perceive impressions, images, or feelings related to the person energetically aligned with your soul's journey.

The resulting artwork represents a blend of psychic impression and artistic interpretation, creating a bridge between the seen and unseen worlds. Each sketch is uniquely created through this intimate spiritual process, making it as individual as the connection it represents.

Addressing Skepticism and AI Concerns


In an age of advanced technology and digital manipulation, skepticism around psychic sketches is natural and healthy. Critics often question whether these portraits are merely generic drawings, AI-generated images, or clever cold reading techniques rather than authentic psychic impressions.

Common Criticisms

- Generic features that could match many people
- Vague readings that apply to almost anyone
- Use of AI or templates instead of genuine psychic art
- Confirmation bias leading people to see resemblances

Finding Authentic Services

- Research the artist's background and spiritual practice
- Look for detailed testimonials with before/after stories
- Choose artists who explain their process transparently
- Trust providers who acknowledge the spiritual nature of their work rather than making absolute claims

 Legitimate psychic artists welcome respectful skepticism and are transparent about their process. They acknowledge that their work combines intuitive gifts with artistic interpretation, and they don't claim scientific validation or 100% accuracy. The most ethical practitioners view their sketches as spiritual tools rather than infallible predictions.

Approaching soulmate and twin flame sketches with balanced discernment—open to possibilities while maintaining critical thinking—allows you to extract meaningful value from the experience regardless of your belief system.

The Psychological Power of Visualizing Your Soulmate



Beyond metaphysical considerations, soulmate and twin flame sketches tap into powerful psychological principles that can positively impact your relationship journey. Having a visual representation of a potential partner activates specific cognitive and emotional processes that can transform your approach to love and connection.

Research in visualization and manifestation suggests that seeing a concrete image of what you desire creates stronger neural pathways associated with that outcome. When you regularly view your soulmate sketch, you're essentially programming your brain's reticular activating system (RAS) to notice compatible individuals who might otherwise blend into the background of your daily life.

These portraits also serve as powerful mirrors, reflecting back aspects of yourself that seek expression or healing through relationship. The features and qualities that most draw you to the sketch often represent energies you're developing within yourself or traits that complement your own nature.

Hope Activation

Creates tangible optimism that counteracts negative relationship patterns

Self-Reflection

Prompts examination of your own readiness for deep connection

Pattern Recognition

Trains your mind to notice aligned connections in your daily life

Preparing Yourself Spiritually

Receiving a soulmate or twin flame sketch marks the beginning rather than the end of your spiritual journey toward profound connection. The most fulfilling unions occur when both parties have done meaningful inner work, creating space for a relationship built on wholeness rather than need.

Raise Your Vibration

Like attracts like in the energetic realm. Daily meditation, gratitude practices, and energy clearing techniques help elevate your frequency to match that of your destined partner. Even 10-15 minutes of centered breathing each morning can dramatically shift your energetic presence.

Consider incorporating modalities like Reiki, sound healing, or crystal work if they resonate with you. These practices help clear energetic blockages that might otherwise delay or obstruct your divine connection.

Heal Past Wounds

Unresolved relationship trauma creates distortion fields in your energy body that can repel otherwise aligned connections. Working with therapists, energy healers, or through modalities like EFT (Emotional Freedom Technique) helps release these patterns.

Particularly for twin flame connections, shadow work becomes essential—the willingness to face and integrate disowned aspects of yourself that will inevitably be mirrored in this intense relationship.

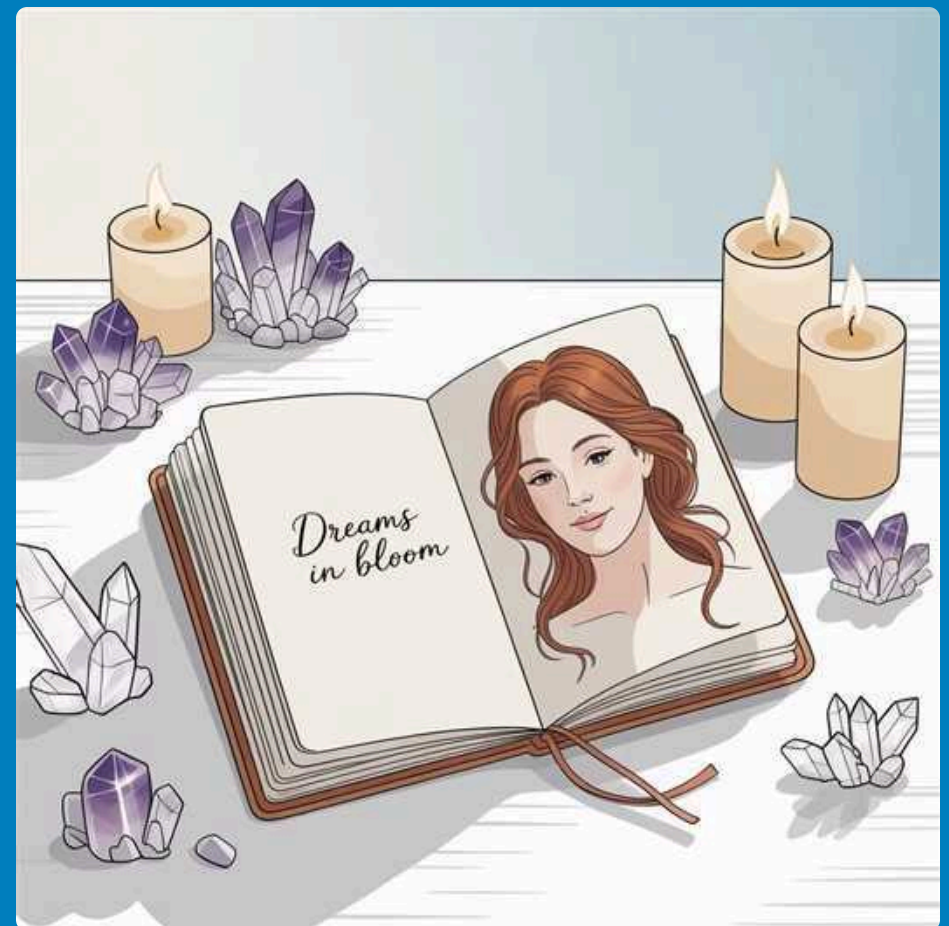
Remember that divine timing plays an essential role in these connections. Your sketch offers a glimpse of possibility, but the universe orchestrates the perfect moment for your paths to cross. Trust this process while actively participating in your own spiritual readiness.

Using Your Sketch as a Manifestation Tool

Your soulmate or twin flame sketch can serve as a powerful focal point for conscious manifestation practices, creating an energetic bridge between your current reality and the future connection you seek. By working with your sketch intentionally, you help align your energy with the frequency of your destined relationship.

Set aside time each day to sit quietly with your sketch. Breathe deeply and allow yourself to feel the presence of this soul connection as if it were already manifested. Imagine conversations, shared laughter, and meaningful moments together. Engage all your senses—what would their voice sound like? Their touch? Their presence in a room?

Keep a dedicated journal for reflections inspired by your sketch. Write letters to your soulmate or twin flame, expressing gratitude for the connection as if it has already manifested. Record dreams, synchronicities, or intuitive hits that might relate to this connection.



Designate a small sacred space featuring your sketch along with objects that symbolize love, connection, and partnership. Add crystals like rose quartz (unconditional love), clear quartz (amplification), or malachite (transformation). A small candle or fresh flowers can activate the energy of this space.

Remember that effective manifestation balances focused intention with detached surrender. While regularly connecting with the energy of your sketch, remain open to how and when this connection materializes—sometimes in ways more beautiful than you could have imagined.

Healing and Empowerment Through Art

Beyond their predictive aspects, soulmate and twin flame sketches serve as powerful healing tools that can transform your relationship with yourself and others. The very act of receiving and connecting with your sketch often initiates profound emotional and spiritual processes that prepare the ground for authentic love.

Validation and Hope

For many who have experienced relationship disappointment or loneliness, the sketch provides tangible confirmation that deep connection is possible. This validation alone can heal wounds of unworthiness or the belief that true partnership isn't available to you.

Energy Harmonization

Regular meditation with your sketch helps harmonize your energy with that of your soulmate or twin flame, even before physical meeting. This energetic alignment can smooth the initial connection process and reduce potential resistance when you do meet.

Shadow Integration

The features or qualities in your sketch that trigger strong emotional responses often point to aspects of yourself requiring integration. Working with these reactions provides valuable opportunities for shadow work and personal wholeness.

Many recipients report that the most significant gift of their sketch wasn't the eventual meeting of their person, but the deep inner work catalyzed by having this spiritual mirror. This preparation creates the foundation for a relationship built on wholeness rather than seeking completion through another.

Leading Soulmate Sketch Providers

The growing interest in spiritual connections has given rise to numerous services offering soulmate and twin flame sketches. While quality and approach vary widely, several providers have established strong reputations based on consistent results and ethical practices.



SoulmateSketcher.com

Founded by former portrait artist and intuitive Eliza Ramirez, this service combines detailed artistic technique with psychic insight. Known for exceptionally accurate physical details and comprehensive readings that typically span 3-5 pages. Delivery within 24 hours and a 30-day satisfaction guarantee make this a popular choice for first-time seekers.



TwinFlameTarot.net

This service integrates traditional tarot reading with psychic artistry, creating multi-layered guidance. Each sketch includes symbolic elements that represent key aspects of your twin flame journey, along with a tarot spread interpretation specific to your connection. Especially valuable for those seeking spiritual depth beyond physical recognition.



Independent Artists

Platforms like Etsy and Instagram host numerous independent psychic artists specializing in soul connection portraits. These often provide more personalized service and unique artistic styles. Look for sellers with substantial positive reviews and clear examples of their work. Many independent artists also offer video calls to discuss your reading in depth.

When selecting a provider, consider factors beyond price—look at sample readings, artistic style, testimonials, and whether their spiritual approach resonates with your own beliefs and expectations.

Free and Trial Options

If you're curious about soulmate and twin flame sketches but not ready to invest in a premium service, several accessible options allow you to explore this spiritual tool without significant financial commitment. These entry-level offerings can provide a meaningful first experience while helping you determine if a more comprehensive reading would be valuable.

Free Mini-Readings

Some established practitioners offer free mini-sketches as promotional tools. These typically feature simplified line drawings with brief bullet-point readings rather than detailed portraits and comprehensive analyses. While limited in scope, they can provide intriguing initial insights and help you assess whether the artist's energy resonates with yours.

Social Media Giveaways

Follow prominent psychic artists on platforms like Instagram, Facebook, and TikTok where they frequently host giveaways for full readings. Participation usually requires following their account, sharing content, or joining a mailing list—a small investment for potentially receiving a complete sketch.

Budget-Friendly Alternatives

Some services offer digital-only sketches without the accompanying reading at a fraction of the full price. Others provide group readings where the cost is significantly reduced, though the connection may not be as personalized as a private session.

⚠ Exercise discernment with free offerings. Some use AI-generated images or templated readings rather than genuine psychic work. Check if the provider clearly explains their process and has verifiable testimonials even for free services.

[CLICK HERE TO CHECK DISCOUNTED PRICE \(24HRS LIMITED OFFER\)](#)

How to Choose the Right Psychic Artist for You

Finding the right psychic artist for your soulmate or twin flame sketch is a deeply personal decision. The strongest connections occur when there's energetic resonance between you and the practitioner. While many talented artists offer this service, the following considerations will help you find one whose approach aligns with your specific needs and spiritual orientation.



Research Their Background

Investigate how the artist developed their abilities and what spiritual traditions inform their practice. Some come from generations of intuitive families, while others discovered their gifts through personal awakening experiences. Their background often influences their interpretive approach to the readings they provide.



Review Their Portfolio

Examine samples of their work to assess both artistic quality and spiritual depth. Do the sketches convey emotion and essence beyond mere physical features? Are the accompanying readings insightful and specific rather than filled with generalities? The best artists capture both the physical likeness and the energetic signature of soul connections.



Consider Methodology

Different artists employ various approaches—some use meditation exclusively, while others incorporate tools like tarot, astrology, or channeling. Choose a methodology that resonates with your spiritual beliefs and comfort level. Some practitioners also offer consultations before committing to a full reading.



Verify Ethical Practices

Ethical psychic artists will have clear policies regarding privacy, refunds, and the appropriate use of their services. They should also be transparent about their process and never make guarantees about timing or specific outcomes. Avoid anyone making extreme claims or creating fear-based urgency to purchase.

Trust your intuition when making your selection. Often the artist who is meant to connect with your energy will stand out in a way that feels inexplicably right, even before you've seen their work.

Ancient Beliefs About Soulmates

The concept of soulmates has deep historical roots stretching back thousands of years across diverse cultures. One of the most influential early accounts comes from Plato's *Symposium*, written around 385 BCE. In this philosophical text, Aristophanes presents the myth that humans originally had four arms, four legs, and a single head with two faces.

According to this creation story, these powerful beings threatened the gods, so Zeus split them in two, condemning humans to spend their lives searching for their other half to feel complete again. This ancient Greek narrative introduced the idea of souls literally split in two, destined to seek reunion—a concept that continues to influence our understanding of soulmates today.

In Hindu tradition, the concept of *karma* and *samsara* (reincarnation) suggests that souls form connections across multiple lifetimes. These relationships, especially marriage bonds, were believed to be predetermined based on karmic debts and spiritual evolution from previous incarnations.



Cross-Cultural Parallels

- Chinese legend of the Red Thread of Fate connecting destined lovers
- Jewish concept of *bashert* or predestined partner
- Ancient Egyptian belief in souls finding each other in the afterlife
- Celtic tradition of handfasting as recognition of soul bonds

These diverse cultural traditions share a remarkable commonality—the belief that certain souls are destined to find each other across time and space, guided by forces beyond human control. Modern soulmate sketches draw on this rich historical tapestry, continuing humanity's ageless quest to understand and identify these profound connections.

Twin Flames in Spiritual Teachings

While soulmate concepts appear throughout ancient traditions, the specific idea of twin flames as we understand them today emerged more prominently in esoteric and mystical teachings. This concept represents a specialized spiritual connection that transcends the broader category of soulmates.

The twin flame concept finds early parallels in Eastern spiritual systems like Taoism, with its principle of yin and yang—complementary opposites that create wholeness when united. In Hindu tradition, the divine masculine and feminine energies (Shiva and Shakti) represent the cosmic twin flame union that creates and sustains the universe.

Buddhism's concept of *pratītyasamutpāda* (dependent origination) suggests that souls evolve together through interconnected journeys across multiple lifetimes, sometimes mirroring each other's growth in profound ways that resemble modern twin flame dynamics.

In Western esoteric traditions, the Hermetic principle "As above, so below" reflects the twin flame concept of mirrored souls. Alchemical texts often portrayed spiritual transformation through the symbolic union of opposing forces, represented as the divine masculine and feminine.

Theosophy and Anthroposophy, developed in the late 19th and early 20th centuries, further refined concepts of soul division and reunion that laid groundwork for modern twin flame theory. These teachings suggested that certain souls originated from the same spiritual monad or oversoul.

Contemporary twin flame teachings synthesize these ancient wisdom traditions with modern spiritual psychology, creating a framework for understanding the intense mirroring, growth catalysts, and spiritual awakening that characterize these rare connections.

Modern Popularity and Media Influence

In recent decades, concepts of soulmates and twin flames have experienced a remarkable surge in mainstream awareness. What was once primarily discussed in spiritual and metaphysical circles has entered popular culture through films, literature, music, and social media.

Hollywood has consistently reinforced soulmate narratives through films like "The Notebook," "Eternal Sunshine of the Spotless Mind," and "Serendipity," which portray destined lovers overcoming seemingly impossible obstacles. These stories resonate deeply because they speak to a universal longing for profound connection that transcends ordinary relationships.

Social Media Revolution

The explosion of twin flame and soulmate content on platforms like TikTok, Instagram, and YouTube has democratized access to these spiritual concepts. Hashtags like #twinflame and #soulmate generate billions of views, with creators sharing personal experiences, spiritual guidance, and manifestation techniques.

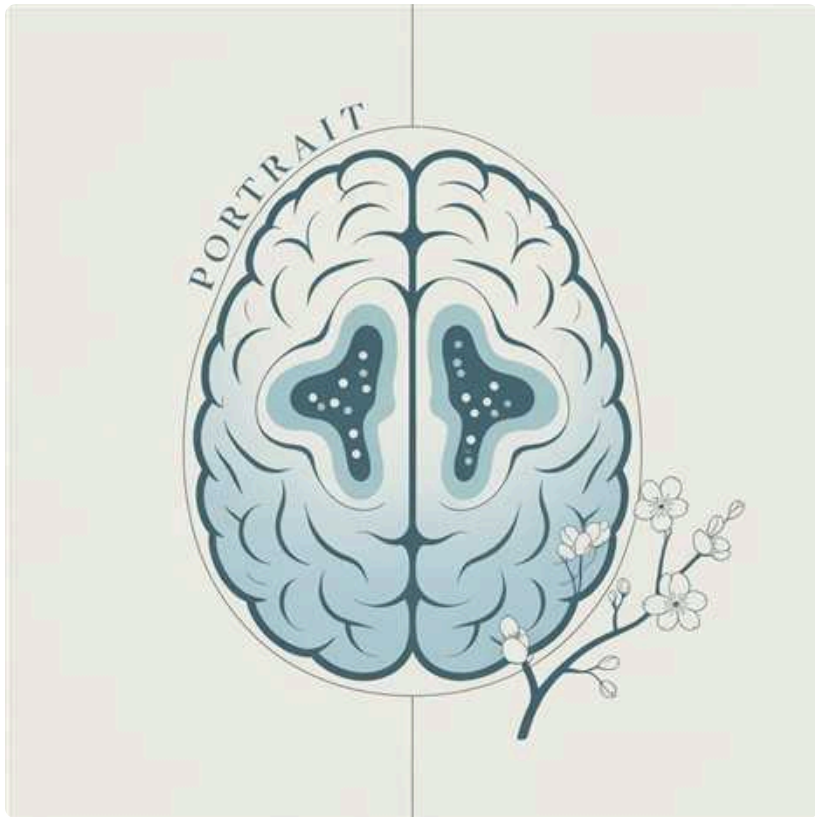
This digital community has created unprecedented access to information about soul connections, but also led to commercialization and sometimes oversimplification of these profound spiritual concepts.

Psychic Art Renaissance

Within this cultural context, soulmate and twin flame sketches have emerged as a uniquely tangible way to engage with these abstract spiritual concepts. The visual nature of these portraits satisfies the modern desire for immediate, personalized spiritual experiences in an increasingly digital world.

Online marketplaces have made these once-rare spiritual services widely accessible, allowing people from diverse backgrounds to explore soul connection concepts through personalized artistic interpretation.

Why Visuals Matter in Spiritual Connection



Humans are intrinsically visual creatures—our brains process visual information 60,000 times faster than text. This neurological reality explains why soulmate and twin flame sketches create such powerful emotional and spiritual impacts compared to written descriptions alone.

When you view a sketch of your potential soulmate or twin flame, multiple brain regions activate simultaneously. The visual cortex processes the image while the limbic system generates emotional responses. Meanwhile, the prefrontal cortex begins creating narrative connections between the face you're seeing and your life experiences or future possibilities.

This multi-level processing creates a more immersive and memorable experience than words alone could achieve. The face becomes imprinted in your memory, creating a recognition template that your brain will automatically compare against people you encounter in daily life.

Emotional Encoding

Visual information paired with emotional significance creates stronger neural pathways and memory retention than logical information alone.

Pattern Recognition

Our brains are constantly scanning environments for familiar patterns. A sketch creates a specific facial pattern to recognize when encountered in reality.

Tangible Connection

Physical representations transform abstract spiritual concepts into concrete focal points for meditation, manifestation, and emotional processing.

The power of visualizing your soulmate or twin flame extends beyond mystical realms into the scientifically validated territory of neuropsychology, explaining why many people report such profound experiences with these spiritual portraits.

Symbolism Embedded in Twin Flame Art

Authentic soulmate and twin flame sketches contain layers of meaning that extend far beyond physical resemblance. Skilled psychic artists intentionally incorporate symbolic elements that communicate spiritual qualities, relationship dynamics, and soul purposes that might otherwise remain hidden.

Color Symbolism

Colors in sketches often carry specific spiritual meanings. Purples and indigos may indicate highly evolved spiritual energy or third-eye activation. Golds and whites typically represent divine connection and purity of intention. Greens often signify heart healing or growth potential within the relationship. Even in black and white sketches, the intensity of shading conveys energetic information.

Nature Elements

Trees, water, fire, mountains, or celestial bodies appearing in sketches provide clues about the connection's nature and challenges. For example, water symbolism might indicate emotional depth and healing aspects of the relationship, while mountain imagery could represent significant obstacles to overcome before union.

Understanding these symbolic layers transforms your sketch from a simple portrait into a multidimensional spiritual map, revealing guidance that becomes increasingly meaningful as your journey unfolds.

Sacred Geometry

Many artists subtly incorporate sacred geometric patterns like the Flower of Life, Merkaba, or spiral forms into backgrounds or clothing details. These universal patterns represent cosmic laws and energy frequencies that govern the twin flame connection, often indicating the spiritual maturity and mission of the union.

Numbers and Synchronicities

Look closely for embedded numbers like 11:11, 222, or 333, which often appear as subtle background elements. These angel numbers carry specific twin flame messages about your journey's current phase and upcoming transitions or awakening experiences.

Before and After: How Sketches Inspire Transformation

The Seeker's Journey

When individuals first seek a soulmate or twin flame sketch, they often arrive at a crossroads in their relationship journey. Many report feelings of disconnection, a series of unfulfilling relationships, or an inexplicable longing for a deeper connection than they've previously experienced.

The decision to request a sketch frequently comes during periods of significant life transition—after breakups, during career changes, or amid spiritual awakenings. This timing is rarely coincidental, as these threshold moments often align with soul-level readiness for profound connection.

"Before my sketch, I was constantly seeking validation through relationships. The portrait showed someone with kind but knowing eyes—someone who would see me completely. This realization helped me start seeing myself that way first. Six months later, I met him at a volunteer event, but by then, I'd already done the inner work to be ready."

The Transformation Effect

Recipients consistently report significant shifts in their relationship patterns and self-perception after receiving their sketches. Beyond the anticipation of meeting their person, many experience an immediate internal reorganization—a "coming home" to themselves that precedes any external union.

This inner alignment often manifests as increased self-confidence, clearer boundaries in existing relationships, and a natural falling away of connections that no longer serve their highest growth. Many describe a newfound peace and patience, trusting the divine timing of their journey rather than anxiously seeking partnership.

Hannah Forcier's YouTube Experiment

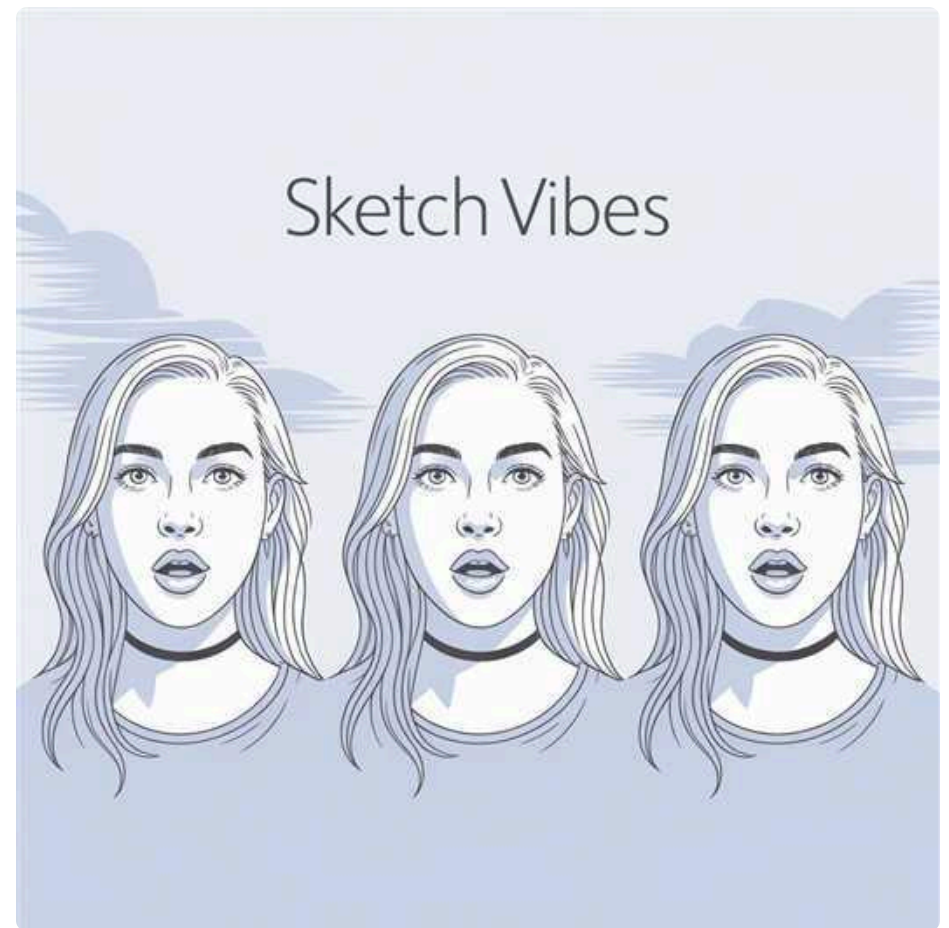
In 2021, content creator Hannah Forcier conducted a widely-viewed YouTube experiment where she commissioned soulmate sketches from three different psychic artists. Her authentic documentation of the process and results provides one of the most transparent looks at the soulmate sketch experience.

Hannah approached the experiment with balanced skepticism and openness, carefully documenting her methodology and emotional responses throughout. She selected providers at different price points, from a basic \$20 sketch to a premium \$100 service with detailed reading.

The Results

Intriguingly, while the three sketches differed significantly in artistic style and detail, Hannah noted consistent themes across all three readings: references to creativity, spiritual connection, and a sense of familiarity or past-life recognition upon meeting.

Several months after receiving the sketches, Hannah reported meeting someone who shared striking similarities with elements from all three portraits—not an exact physical match to any single drawing, but a composite of qualities and energy predicted in the readings.



"I went into this as content for my channel, but the experience affected me more deeply than I expected. Whether or not you believe in psychic abilities, there's something powerful about contemplating your ideal partner beyond just physical appearance."

— Hannah Forcier

Hannah's experiment highlights an important aspect of soulmate sketches—they often capture an energetic essence rather than a photographic likeness, requiring recipients to look beyond surface features to recognize the deeper connection when it appears.

Client Stories from SoulmateSketcher.com

Keith, 42, Software Engineer

"I ordered my sketch out of curiosity more than conviction. When it arrived, I was struck by the intensity in the eyes—they seemed to see right through me. The reading mentioned a connection through music and intellectual debate.

Three weeks later, I attended a friend's dinner party where I met Alicia. While she didn't look exactly like the sketch, there was something familiar about her expression. We ended up talking for hours about philosophy and discovered a shared passion for classical composition. We've been together for 14 months now, and the parallels between her essence and what was described in my reading continue to amaze me."

Megan, 29, Nurse Practitioner

"After a painful divorce, I felt completely closed off to love. A friend gifted me a twin flame sketch for my birthday. I was initially dismissive but was moved to tears by the compassionate eyes in the portrait and the detailed reading that followed.

The artist described my twin flame as someone working in education with a passion for environmental causes. The reading suggested we would meet through community service. Six months later, while volunteering at a beach cleanup, I met a kindergarten teacher who organized environmental education programs. The connection was immediate and unlike anything I'd experienced before—exactly as the reading had described it would feel."

Darius, 36, Marketing Director

"I received my sketch during a spiritual awakening that turned my life upside down. The face in the drawing wasn't what I expected—it showed someone with features very different from my usual 'type.' The reading emphasized that my soulmate would challenge my perspectives and help me embrace parts of myself I'd been suppressing.

A year later, I met someone who bore a striking resemblance to the sketch at a business conference. Our connection was both challenging and profoundly healing, exactly as predicted. Whether coincidence or cosmic orchestration, the experience has transformed how I understand relationships and my own journey."

These testimonials reflect common themes reported by recipients—recognition that goes beyond physical appearance, significant life changes preceding the connection, and the unexpected ways these meetings unfold in alignment with the readings provided.

Common Themes in Testimonials

Across hundreds of published testimonials from soulmate and twin flame sketch recipients, certain patterns emerge that provide insight into the collective experience. These consistent themes suggest that beyond individual results, these spiritual portraits tap into universal aspects of human connection and spiritual growth.

Validation and Recognition

Many recipients report an immediate emotional response upon viewing their sketch—a sense of recognition or "knowing" that transcends logical explanation. This feeling often extends to the reading itself, with specific details resonating deeply despite their personal nature. This validation frequently restores hope after periods of relationship disappointment or questioning.

Inner Before Outer

A remarkably consistent pattern shows that personal transformation typically precedes the physical meeting. Recipients describe newfound clarity about relationship patterns, healing of past wounds, and significant lifestyle changes after receiving their sketch but before encountering their soulmate or twin flame in person.

Unexpected Timing and Circumstances

While readings often provide general timeframes for meeting, the actual encounters frequently occur in unexpected ways or through unlikely circumstances. Many describe a sense of divine orchestration or "perfect timing" that aligns with significant life transitions or periods of personal growth.

Beyond Physical Resemblance

Most successful matches report connections that go deeper than exact physical likeness. While some note striking facial similarities, others emphasize matching energy, expression, or specific features mentioned in the reading. The spiritual and emotional resonance consistently outweighs perfect physical matching in importance.


Understanding the Entertainment Nature of Psychic Sketches

While many recipients report profound experiences with soulmate and twin flame sketches, it's important to approach these spiritual tools with balanced perspective. Reputable providers frame their services primarily as spiritual entertainment and guidance rather than guaranteed predictions or scientific certainties.

This entertainment classification doesn't diminish the potential value or impact of these sketches, but it does establish appropriate expectations and ethical boundaries. The most transformative experiences often come when recipients view their sketch as one tool in a broader spiritual journey rather than an absolute roadmap or shortcut to connection.

Soulmate and twin flame sketches work best as complementary tools alongside other personal development practices. They may provide inspiration and insight, but shouldn't replace professional counseling, therapy, or medical advice—especially for individuals working through relationship trauma or navigating significant life challenges.

Those experiencing severe loneliness, relationship addiction, or who are vulnerable after recent heartbreak should approach these services with additional caution and support systems in place.

 Most ethical providers include disclaimers clarifying that their services are for entertainment and spiritual exploration. These statements protect both practitioner and client by establishing appropriate expectations and encouraging responsible engagement.

Avoiding Dependency and Scam Risks

As with any spiritually-oriented service, the soulmate and twin flame sketch industry includes both authentic practitioners and opportunistic individuals looking to exploit vulnerability. Developing discernment is essential for a positive experience that empowers rather than creates dependency or financial strain.

Red Flags in Service Providers

- Guarantees of specific outcomes or timeframes (e.g., "Meet your soulmate within 30 days")
- Claims that purchasing additional services or products is necessary to "unblock" your connection
- Vague, generic readings that could apply to almost anyone
- High-pressure tactics or creating fear about "missing your chance"
- No clear refund policy or transparency about the creation process

Signs of AI-Generated Content

- Perfectly symmetrical faces with flawless features
- Identical background elements across multiple customer examples
- Strange artifacts like distorted fingers or unusual ear shapes
- Extraordinarily fast delivery (minutes rather than hours/days)
- Refusal to answer specific questions about the creation process

Healthy Engagement Practices

- Set a reasonable budget before exploring services
- Limit yourself to one or two readings rather than constantly seeking "confirmation"
- Use the sketch as inspiration for inner work, not as a reason to avoid current relationships
- Share your experience with trusted friends who can offer balanced perspective
- Remember that you remain the primary author of your love story

The most valuable spiritual tools empower you toward greater autonomy and self-knowledge rather than creating dependency on external validation or guidance. Approach these services with excitement but maintain healthy boundaries around their role in your journey.

Respecting Free Will and Divine Timing



One of the most important ethical considerations when working with soulmate and twin flame sketches involves honoring the principles of free will and divine timing. While these spiritual portraits can provide valuable guidance, they shouldn't lead to tunnel vision or attempts to force connections based on physical resemblance alone.

Every soul on Earth maintains sovereign free will—including your potential soulmate or twin flame. This means that while certain connections may be destined, the timing, circumstances, and even whether the connection manifests romantically remains subject to individual choices and spiritual readiness on both sides.

The Divine Timing Principle

Many spiritual traditions teach that soul connections unfold according to divine timing that serves the highest growth of all involved. This timing rarely aligns with our human desires for immediate fulfillment, instead following a cosmic choreography designed to ensure both parties have completed necessary healing and preparation.

"The universe is rarely so literal as to simply hand you exactly what you ask for exactly when you ask for it. Soul connections especially require patience and trust in timing beyond our limited perspective."

— Dr. Elisa Gonzalez, Spiritual Psychology

Approaching your sketch with respect for these principles creates space for organic connection rather than forced outcomes. This mindset transforms the experience from potentially desperate searching to peaceful alignment with your own soul journey, trusting that authentic connections will unfold in their perfect timing.

[CLICK HERE TO CHECK DISCOUNTED PRICE \(24HRS LIMITED OFFER\)](#)

Tips for Receiving Your Sketch

The moment of receiving your soulmate or twin flame sketch represents a significant spiritual event—a bridge between anticipation and manifestation. How you approach this experience can significantly impact its meaning and effectiveness in your journey.

Before ordering your sketch, take time for personal reflection. Journal about your relationship history, patterns you've noticed, and what you truly seek in a profound connection. This clarity helps create a stronger energetic channel between you and the psychic artist.

Be thorough and honest when providing your personal details. Beyond basic information like your name and birth date, many services welcome additional context about your spiritual journey or specific questions. This information helps the artist attune more precisely to your unique energy signature.

Take notes on your immediate impressions and feelings when first viewing your sketch. These initial responses often contain intuitive insights that may become significant later in your journey, especially once you've met your soulmate or twin flame in person.

Create sacred space for first viewing your sketch. Choose a quiet moment free from distractions, perhaps lighting a candle or playing soft instrumental music to enhance receptivity. Many recipients report that their initial emotional response provides valuable intuitive information.

Approach with balanced expectations—neither dismissive skepticism nor desperate attachment to outcomes. The most profound insights often arrive in unexpected forms, sometimes revealing themselves gradually rather than in an immediate flash of recognition.

Integrating the Sketch Into Daily Life

Once you've received your soulmate or twin flame sketch, intentionally incorporating it into your daily routine can amplify its spiritual benefits. Rather than simply filing it away, consider creating practices that keep this connection energetically active in your life.

Sacred Space Creation

Many recipients create a small altar or dedicated space featuring their sketch. This might include meaningful crystals (rose quartz for unconditional love, clear quartz for amplification, or amethyst for spiritual connection), fresh flowers, or objects symbolizing qualities you wish to cultivate in yourself and your relationship.

This space serves as a daily reminder of your intention and creates a focal point for meditation, prayer, or visualization practices. Even glancing at it briefly during your morning routine can maintain the energetic connection throughout your day.

Remember that integration is about consistent, gentle attention rather than obsessive focus. The sketch serves as a touchstone for your intention while you continue living fully in the present moment, creating the rich, whole life that will eventually be shared with your profound connection.

Journaling Practice

Keep a dedicated journal for reflections inspired by your sketch. Note dreams, synchronicities, or chance encounters that seem connected to your soulmate or twin flame journey. This written record often reveals patterns and progression that might otherwise go unnoticed.

Some practitioners recommend dialogue journaling—writing letters to your soulmate or twin flame as if they were already in your life. This practice helps clarify your authentic desires and cultivates the emotional openness necessary for deep connection when you do meet.

Combining Sketches with Other Spiritual Practices

Soulmate and twin flame sketches become most powerful when integrated into a holistic spiritual practice. By combining your sketch with complementary modalities, you create a synergistic approach that addresses multiple dimensions of preparation and manifestation.



Divination Practices

Regular tarot or oracle readings can provide ongoing guidance about your journey's current phase and upcoming shifts. Place your sketch nearby during readings to enhance the energetic connection. Some practitioners recommend specific spreads like the Celtic Cross or Relationship Path for soul connection insights.



Meditation & Visualization

Develop a consistent meditation practice that includes visualizing meeting your soulmate or twin flame. Begin by centering in your heart space, then bring the image from your sketch into your awareness. Imagine conversing, connecting, and sharing experiences with this soul, focusing on the feeling essence rather than just physical appearance.



Energy Work

Practices like Reiki, chakra balancing, or sound healing help clear energetic blockages that might delay your connection. Focus particularly on the heart chakra, which governs love and connection, and the throat chakra, which relates to authentic self-expression in relationships. Professional energy workers can provide targeted clearing if you sense significant blockages.

Many spiritual teachers emphasize that the inner work done while awaiting your soulmate or twin flame creates the energetic foundation for the relationship's eventual success. Your sketch serves as both catalyst and companion for this transformative preparation.

How long does it take to get my soulmate or twin flame sketch?


The delivery timeframe for soulmate and twin flame sketches varies by provider, but most services deliver within 24-48 hours after receiving your order and personal details. This relatively quick turnaround is possible because psychic artists typically work with one client at a time in focused meditation sessions.

Premium services with more detailed portraits or comprehensive readings may require 3-5 days to complete. Some practitioners also offer expedited options for those seeking faster delivery, though many spiritual advisors caution that rushing the process can sometimes impact the depth and quality of the connection.

The creation process itself typically involves:

1. Initial energy connection with your details (30-60 minutes)
2. Meditation and channeling to receive impressions (1-2 hours)
3. Artistic rendering of the psychic impressions (2-4 hours)
4. Writing the accompanying reading (1-3 hours)

Digital delivery via email is most common, though some services offer physical mailing options for those who prefer tangible artwork. Digital delivery allows for immediate engagement with the sketch and reading, beginning your integration process without delay.

 Be wary of instant or automated services that deliver sketches within minutes, as these often use AI-generated images rather than genuine psychic artwork. Authentic spiritual connection requires a reasonable time investment from the practitioner.

Can I get a refund if I'm not satisfied?

Refund policies for soulmate and twin flame sketches vary significantly between providers, though most reputable services offer some form of satisfaction guarantee. Understanding these policies before placing your order helps ensure a positive experience and appropriate expectations.

Typical Refund Windows

Most established services offer refund windows ranging from 7 to 30 days after delivery. This timeframe allows you to thoroughly review your sketch and reading while protecting the provider from excessive time investment on non-committed clients.

Satisfaction Criteria

Refund eligibility typically requires that you feel the sketch and reading don't resonate with your energy or contain obvious generic content. However, most policies clarify that refunds aren't based on whether you've physically met your soulmate yet, as this often depends on divine timing beyond the reading itself.

Communication Process

Before requesting a refund, many services ask that you communicate your concerns directly with the artist. Sometimes clarification or additional insights can resolve misunderstandings about the reading's content. This conversation often leads to greater satisfaction without requiring a refund.

When researching providers, prioritize those with transparent, clearly stated refund policies that demonstrate confidence in their work while respecting client satisfaction. The most ethical practitioners view refunds as an occasional but necessary part of spiritual service rather than something to be avoided through restrictive policies.

Are these sketches scientifically proven?

Soulmate and twin flame sketches operate primarily within spiritual and metaphysical frameworks rather than scientific ones. There have been no peer-reviewed studies specifically validating the accuracy of psychic sketches in predicting future romantic partners. From a conventional scientific perspective, these practices remain unproven and would generally be classified as spiritual entertainment.

However, absence of scientific validation doesn't necessarily negate meaningful personal experiences. Many recipients report profound emotional responses and eventual connections that align with their sketches in ways that feel beyond coincidental. These anecdotal experiences, while not scientifically conclusive, hold significant personal value for those involved.

Some aspects of the soulmate sketch experience do intersect with studied psychological phenomena. The power of visualization in goal achievement has been documented in sports psychology and behavioral research. Similarly, the concept of "thin-slicing"—making accurate judgments based on minimal information—has been studied in social psychology and might relate to how psychic artists process intuitive information.

Emerging research in consciousness studies and quantum physics continues to explore non-local consciousness and energetic connections between individuals, potentially offering future frameworks for understanding intuitive phenomena.

❏ A balanced approach recognizes that the lack of scientific validation doesn't diminish the potential spiritual and emotional benefits these sketches provide for many individuals. They remain valuable tools for self-reflection, hope, and spiritual exploration regardless of their empirical status.

Can I have multiple soulmates or twin flames?

Soulmates

Most spiritual traditions and contemporary metaphysical teachings suggest that we can indeed have multiple soulmates throughout our lifetime. These connections serve various purposes in our soul's evolution—some romantic, others platonic, familial, or mentorship-based.

Soulmates are often described as souls from our "soul family" or "soul group"—beings with whom we've shared multiple incarnations and soul contracts. Each soulmate arrives to help us learn specific lessons, heal particular wounds, or experience certain aspects of love and growth.

Understanding this distinction helps clarify what type of sketch might best serve your spiritual journey. Those seeking their primary romantic partnership might benefit from a soulmate sketch, while those experiencing the specific symptoms of twin flame awakening may find more relevant guidance in a twin flame portrait.

Twin Flames

Twin flames, by contrast, are generally understood to be singular connections—literally the other half of your soul's original energy. Most metaphysical teachings describe twin flames as one soul that divided into two complete beings, creating perfect energetic complements that mirror each other's wounds, gifts, and spiritual purpose.

While some contemporary practitioners have begun suggesting the possibility of multiple twin flames, this represents a significant departure from traditional understanding. The intensity and specificity of the twin flame connection—including the characteristic running/chasing dynamic and profound mirroring—typically points to a singular relationship.

What if I already know my soulmate or twin flame?

Many people seek soulmate or twin flame sketches after already being in committed relationships or having strong intuitive feelings about someone in their lives. In these cases, the sketch can serve different but equally valuable purposes compared to those seeking new connections.

Confirmation

A sketch can provide validation of your intuitive feelings about an existing connection. Many recipients report receiving portraits that bear striking resemblances to their current partners, confirming what they already sensed spiritually. This confirmation can deepen trust in your own intuition and the relationship's spiritual significance.

Deeper Understanding

The reading accompanying your sketch often provides insights into the soul contract and spiritual purpose behind your existing relationship. This information can help navigate challenges, understand recurring patterns, and appreciate the growth opportunities you're experiencing together. Many couples use these insights in relationship counseling or spiritual coaching.

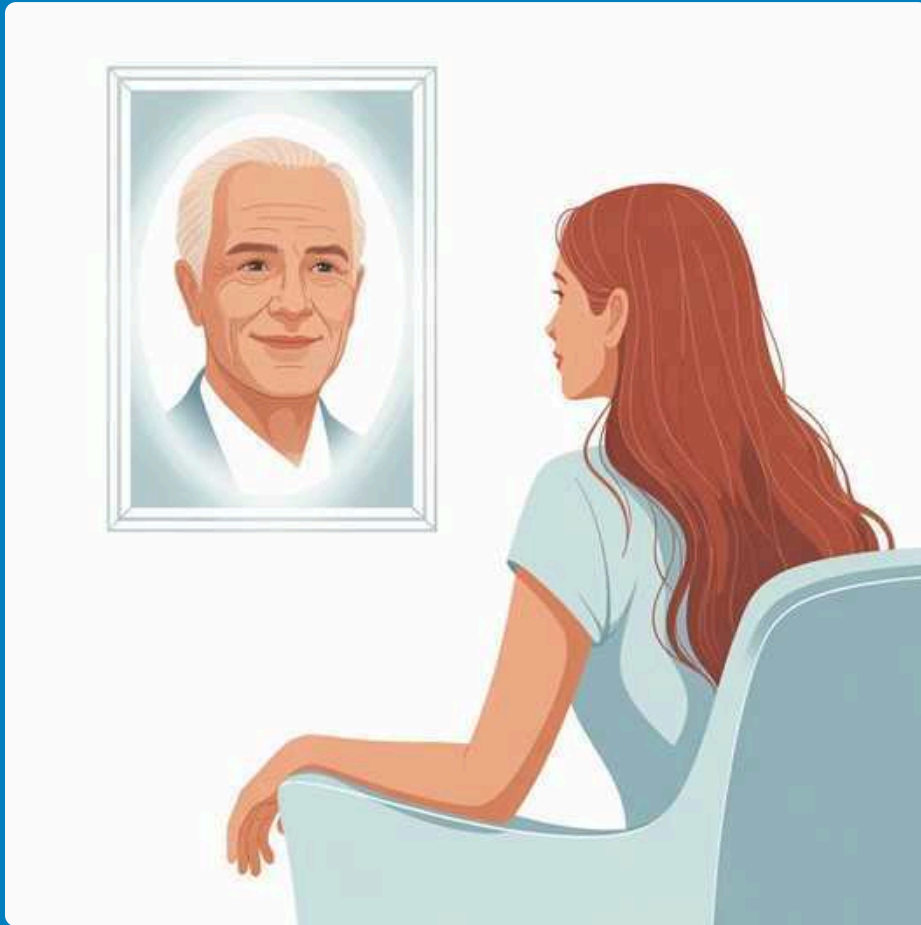
Future Connections

In some cases, a sketch may reveal that while your current relationship is meaningful, your soulmate or twin flame connection may still be forthcoming. This doesn't diminish your present relationship but offers perspective on your broader soul journey. Ethical practitioners emphasize that this information should inspire thoughtful reflection rather than impulsive decisions.

Some services offer specific "relationship confirmation" readings that focus on the spiritual dimensions of existing connections rather than predicting new ones. These specialized readings can be particularly valuable for couples navigating significant transitions or seeking to deepen their spiritual bond.

[CLICK HERE TO CHECK DISCOUNTED PRICE \(24HRS LIMITED OFFER\)](#)

Ready to See Your Soulmate or Twin Flame?



The decision to request a soulmate or twin flame sketch represents more than simple curiosity—it's often the first tangible step toward consciously participating in your soul's journey toward profound connection. This moment of commitment signals to both your conscious and subconscious mind that you're ready to recognize and receive this relationship.

Many recipients describe their decision to order a sketch as a turning point—a declaration to the universe that they're prepared to do the necessary inner work to welcome this connection. This intentional step often catalyzes a cascade of synchronicities, dreams, and intuitive guidance that begin preparing the way.

"Something shifts when you move from wondering about your soulmate to actively seeking recognition. It's like turning on a spiritual GPS that begins guiding you toward each other."

Whether motivated by curiosity, loneliness, or deep spiritual calling, your intention matters more than your initial reason. Approaching this experience with sincerity and openness creates the most fertile ground for meaningful insights and eventual recognition when your paths cross.

Remember that the sketch itself is just the beginning—a doorway into deeper self-knowledge and spiritual alignment that continues unfolding long after you receive your portrait and reading.

How to Place Your Order Today

Taking the first step toward receiving your soulmate or twin flame sketch is a straightforward process designed to connect you with the right practitioner for your unique spiritual journey. Follow these steps to ensure the most meaningful and authentic experience.

Research and Select

Invest time researching different providers, reviewing testimonials, and examining sample sketches and readings. Look for artists whose style and spiritual approach resonate with you personally. Consider factors like artistic detail, reading depth, delivery timeframe, and refund policies.

Prepare Your Information

Gather the personal details required for your submission, typically including your full name, birth date, and sometimes a recent photograph (used for energy connection, not for drawing you). Some services welcome additional information about your spiritual journey or specific questions you'd like addressed in your reading.

Choose Your Package

Most services offer tiered options ranging from basic sketches to comprehensive packages with detailed readings and additional features like energy clearing or chakra analysis. Select the option that aligns with both your budget and the depth of guidance you're seeking.

Submit with Intention

When placing your order, take a moment to center yourself and set a clear intention for this experience. Many practitioners recommend a brief meditation or prayer to open yourself to receiving the most aligned guidance through this process.

After submitting your order, prepare a sacred space for receiving your sketch within the expected timeframe. Creating this intentional environment helps maximize the emotional and spiritual impact of first viewing your soulmate or twin flame portrait.

Embrace Hope, Healing, and Love

The journey toward profound soul connection—whether with a soulmate or twin flame—transcends simple romantic pursuit. It represents one of life's most transformative spiritual pathways, offering opportunities for healing, growth, and expansion that extend far beyond the relationship itself.

Your soulmate or twin flame sketch serves as both map and mirror on this journey—revealing not only the face of your destined partner but also reflecting back aspects of yourself that seek expression, healing, and integration. This dual purpose makes these spiritual portraits powerful catalysts regardless of when or how your physical meeting occurs.

As you move forward with this experience, remember that the ultimate purpose of these profound connections is spiritual awakening. The love, joy, and companionship they bring are beautiful gifts, but the deeper transformation they initiate in your consciousness represents their true spiritual function.

Approach this journey with courage, patience, and trust in divine timing. The universe orchestrates these meetings with perfect precision, ensuring both souls have completed necessary preparation and healing before bringing them together in physical reality.

"The recognition of your soulmate or twin flame isn't the end of your spiritual journey—it's the beginning of your greatest adventure together. This connection will challenge, heal, and transform you in ways you cannot yet imagine, all in service to your highest evolution."

— Spiritual teacher Maya Sullivan

Your Soul's Reflection Awaits

Every soul connection leaves an invisible thread woven through the fabric of existence—a spiritual promise of eventual reunion. The soulmate or twin flame sketch brings this ethereal connection into tangible form, creating a bridge between worlds and a focal point for your heart's recognition.

The portrait you receive represents more than artistic interpretation—it serves as a spiritual anchor, helping you recognize the energy signature of your most profound connection when it appears in your life. Recipients often describe an unmistakable moment of recognition—a soul-level knowing that transcends logical explanation.

This sacred glimpse into your destined connection offers not just anticipation of future meeting, but immediate transformation in how you understand yourself and your capacity for love. The journey begins the moment you decide to see—truly see—the face of the one your soul has been seeking across lifetimes.

"The sketch showed me not just who I was looking for, but who I needed to become to be ready for that level of love. That was the true gift."

— James, 39

Connect With Our Community

The journey toward recognizing and uniting with your soulmate or twin flame is profoundly personal, yet sharing this path with others experiencing similar awakenings can provide invaluable support, validation, and wisdom. Connecting with community resources amplifies your understanding and provides encouragement during challenging phases of the journey.

Online Forums

Dedicated forums like SoulConnection.org and TwinFlameUnion.com offer moderated spaces where seekers can share experiences, ask questions, and receive guidance from those further along the path. These communities often include sections specifically for those working with soulmate and twin flame sketches, where you can compare experiences and insights.

Social Media Groups

Private Facebook groups and subreddits dedicated to soul connections provide more informal spaces for daily sharing and support. These groups often organize virtual events like meditation circles, energy healing sessions, and Q&A sessions with spiritual teachers specializing in divine partnerships.

Virtual Workshops

Many spiritual centers and individual practitioners offer online workshops focused on preparing for and navigating soul connections. These structured learning experiences provide deeper understanding of the spiritual mechanics behind these relationships and practical tools for alignment.

When engaging with communities, maintain healthy boundaries and discernment. The most valuable groups emphasize personal empowerment, spiritual growth, and balanced perspective rather than dependency or magical thinking. Look for spaces that welcome respectful questioning and diverse spiritual viewpoints.

Explore Further Resources

Recommended Books

- **Soul Connections: Understanding the True Nature of Soulmates and Twin Flames** by Elizabeth Clare Prophet — Explores the spiritual dimensions of profound relationships from both Eastern and Western perspectives.
- **The Power of Twin Soul Love** by Mary Dunlop — A personal account of twin flame recognition, separation, and eventual union with practical guidance for others on the journey.
- **Sacred Union: Pathway to Paradise** by Dr. Harmony — Combines psychological insight with spiritual teaching to help readers prepare for and navigate profound soul connections.

Additional Services

Beyond sketches, many practitioners offer complementary services that support your soul connection journey:

- **Akashic Record Readings** — Access information about past lives shared with your soulmate or twin flame
- **Soul Plan Analysis** — Understand the spiritual contracts and agreements underlying your connection
- **Energy Healing** — Clear blockages that may be delaying or complicating your union
- **Spiritual Coaching** — Ongoing support for navigating the challenges and opportunities of these profound relationships

Video Resources

- **Twin Flame Universe** on YouTube — Comprehensive channel with hundreds of videos addressing specific aspects of the twin flame journey from recognition through union.
- **Soul Connections Masterclass** — Free video series by spiritual teacher Annika Lucas explaining the different types of soul relationships and their spiritual purposes.
- **Meditation for Soul Recognition** — Guided visualization practice by Michael Sandler designed to open your energy to recognizing your soulmate or twin flame.

Your Journey Begins Now: See Your Soulmate Twin Flame Sketch and Open Your Heart to True Love

The face of your destined partner exists not just in future possibility, but in the eternal now—a connection that transcends time and space, waiting for mutual recognition. Your soulmate twin flame sketch brings this abstract spiritual truth into tangible form, creating a powerful focal point for your heart's journey toward profound love.

Whether you're seeking confirmation of an existing connection or guidance toward a future meeting, this spiritual portrait offers both mirror and map—reflecting your own soul's evolution while illuminating the path toward your most aligned partnership.

The moment you decide to receive your sketch marks a profound energetic shift—a declaration to the universe that you're ready to see and be seen at the soul level. This intention alone begins magnetizing your energies toward alignment, often initiating a cascade of synchronicities, dreams, and intuitive nudges guiding you toward each other.

Your soulmate or twin flame may indeed be closer than you think—perhaps someone already in your life whose true significance you've yet to recognize, or a stranger just one decision away from crossing your path. The sketch helps you develop the spiritual vision to see beyond surface appearances to the soul recognition that transcends all else.

Take this step with an open heart and balanced expectations, trusting that whatever unfolds serves your highest spiritual growth and authentic joy. Your journey toward profound love and spiritual partnership begins now.

[Order Your Soulmate Sketch Today](#)

[CLICK HERE TO CHECK DISCOUNTED PRICE \(24HRS LIMITED OFFER\)](#)



1 + 1: Order your Soulmate Sketch and get your Twin Flame Sketch absolutely FREE.

NORMALLY: \$147

You Pay Only:

\$37

[CLAIM MY FREE BONUS NOW →](#)