

Discover Your True Love: The Eva Bloom Soulmate Sketch Experience

Unveil the face and essence of your destined partner through Eva Bloom's intuitive artistry. A personalized spiritual journey that combines tarot wisdom, astrological insights, and artistic channeling to reveal your soulmate's energy before you meet them.



[CLICK HERE TO CHECK DISCOUNTED PRICE \(24HRS LIMITED OFFER\)](#)

[Read Success Stories](#)

Eva Bloom Soulmate Sketch Cost

The Eva Bloom Soulmate Sketch experience is designed to be accessible while honoring the depth of intuitive work involved. Current pricing ranges from **\$30 to \$50**, depending on the package you select.

Each sketch is individually created by Eva herself, channeling your unique energy and your future soulmate's essence. Unlike mass-produced readings, these personalized sketches require significant spiritual and artistic focus.

The base package includes your hand-drawn soulmate sketch and a brief intuitive reading. Premium packages may include expanded tarot insights, detailed astrological compatibility blueprints, and personalized manifestation rituals designed to align your energy with your future partner.

Many clients report that the emotional clarity and spiritual guidance they receive far exceeds their initial investment, making this a valuable tool for those serious about their spiritual love journey.



What's Included in Your Investment

- Hand-drawn soulmate portrait
- Personalized tarot reading
- Astrological compatibility insights
- Manifestation ritual guide
- Fast delivery (typically 1-3 days)

[CLICK HERE TO CHECK DISCOUNTED PRICE \(24HRS LIMITED OFFER\)](#)

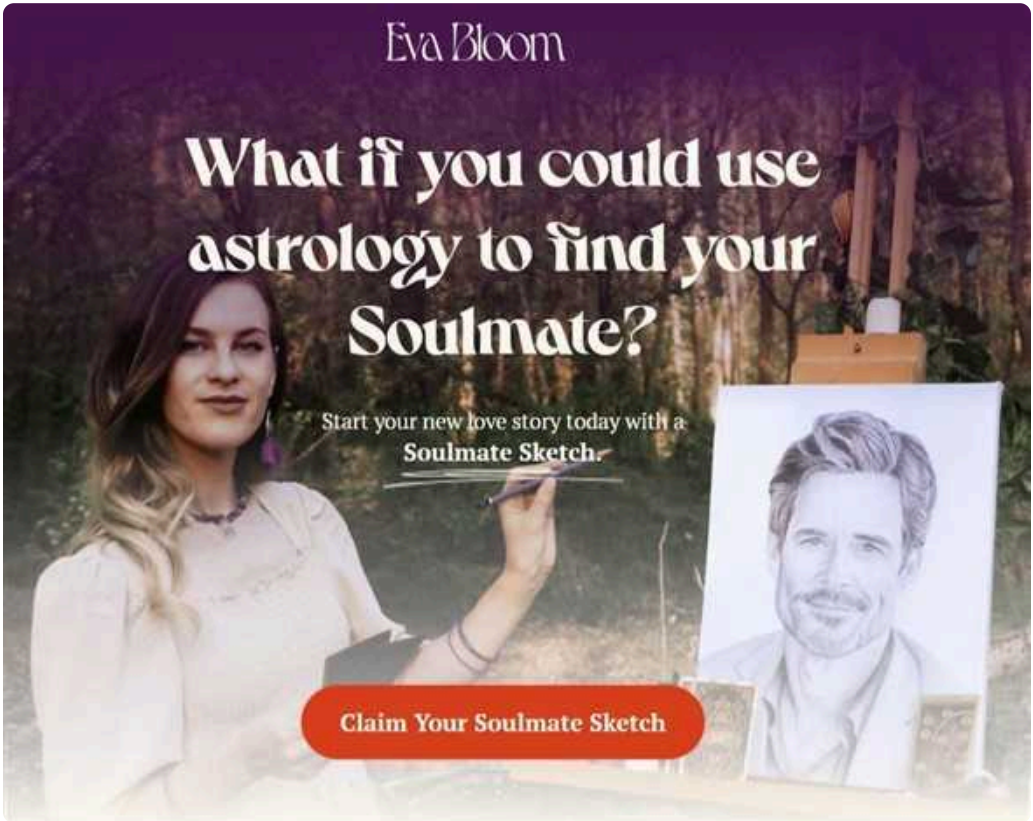
Eva Bloom Soulmate Sketch Price

1	2	3
Basic Package: \$30 <ul style="list-style-type: none">• Hand-drawn soulmate sketch• Brief intuitive reading• Digital delivery within 3 days	Standard Package: \$40 <ul style="list-style-type: none">• Hand-drawn detailed sketch• Complete tarot reading• Basic astrological insights• Digital delivery within 2 days	Premium Package: \$50 <ul style="list-style-type: none">• Premium hand-drawn sketch• Extended tarot reading• Comprehensive astro blueprint• Personalized manifestation rituals• Priority delivery (1-2 days)

Eva Bloom maintains reasonable pricing to make spiritual guidance accessible to everyone seeking clarity in their love journey. While some psychic artists charge \$100+ for similar services, Eva believes that meaningful spiritual guidance should be available to all seekers.

Payment is securely processed through Etsy's platform, with occasional seasonal discounts offered to subscribers of Eva's newsletter. The value extends beyond the artwork—clients receive emotional healing, relationship clarity, and renewed hope in their romantic future.

[View Current Pricing](#)



Eva Bloom Soulmate Sketch Reviews

"I was skeptical at first, but Eva's sketch left me speechless. Not only was the drawing beautiful, but the emotional essence she captured was profound. Two months after receiving my sketch, I met someone who resonated deeply with the energy depicted. The resemblance wasn't exact, but the **emotional connection was undeniable**. Eva truly has a gift." — Melissa T.

“

"Eva is the real deal. Despite her high demand, she took time to create something deeply personal. The reading was spot-on about my relationship patterns. Be patient with the process—it's worth it." — James K.

”

“

"The sketch was beautiful, but the astrological insights changed my life! I realized why I kept attracting emotionally unavailable partners. Three months of inner work later, I met someone wonderful." — Sarah M.

”

“

"Fast delivery, amazing drawing, helpful reading. Five stars all the way! Will definitely order again for my sister." — Chris R.

”

Eva maintains a consistent 5-star rating across platforms, with over 15 glowing reviews on Etsy alone. Clients frequently mention the accuracy of emotional insights, the beauty of the sketches, and the unexpected healing that comes from the experience.

Chapter 1: The Invitation to a Spiritual Journey

Every love story begins before the first meeting. In the quiet spaces between heartbeats, in the energy that surrounds us, our future connections are already forming. The Eva Bloom Soulmate Sketch represents an invitation to step into this sacred space—to glimpse the energy of love that waits for you.

This spiritual journey isn't merely about finding someone; it's about becoming ready to recognize them when they appear. It's about understanding your own heart's patterns and preparing fertile ground for authentic connection.

As you embark on this path with Eva Bloom's guidance, you're not simply commissioning artwork. You're opening a channel to deeper understanding, setting conscious intention, and aligning with the vibrational frequency of your destined connection.

The chapters that follow will guide you through this transformative experience—from understanding what the soulmate sketch truly is, to hearing from those whose lives have been touched by Eva's gift, to practical steps for making the most of your own soulmate revelation.

What Is the Eva Bloom Soulmate Sketch?

The Eva Bloom Soulmate Sketch is a unique spiritual experience that combines intuitive artistry, tarot wisdom, and astrological insights to reveal the essence of your future soulmate. Far more than a simple drawing, it's a multi-dimensional glimpse into the energy of the person your heart is destined to recognize.

Each sketch is hand-drawn by Eva herself, channeled through meditation on your birth data and energy. The result is a **personalized portrait** that captures not just potential physical features, but more importantly, the emotional and spiritual signature of your future beloved.

Accompanying the sketch is a personalized tarot reading that illuminates your current love journey, revealing blocks to overcome and opportunities to embrace. The complete package also includes an astrological compatibility blueprint that helps you understand the deeper dynamics of your future relationship.



Many clients report that the sketch feels like a reunion rather than an introduction—a familiar face they somehow already know. This recognition points to the deeper truth behind Eva's work: she doesn't create your soulmate; she simply reveals what your soul already knows.

The Magic Behind the Sketch

Eva Bloom brings a rare combination of gifts to each soulmate sketch. As a lifelong intuitive with formal training in both fine art and tarot reading, she has developed a unique process that bridges the visible and invisible worlds.

Energy Attunement

Eva begins by meditating with your birth information, connecting with your energy field across time and space. This attunement allows her to access the quantum field where future possibilities exist.

Channeled Drawing

In a flow state, Eva allows her hand to be guided by intuitive impressions. The resulting sketch captures essence rather than exact features—the feeling of your soulmate rather than a photographic likeness.

This multi-layered approach results in a deeply personal artifact that acts as both mirror and window—reflecting your own readiness for love while offering a glimpse into your romantic future.

Tarot Guidance

A personalized tarot spread reveals your current love journey, hidden obstacles, and the energetic signature of your soulmate. These cards guide Eva's intuition toward the most relevant aspects to capture.

Astrological Integration

Your birth chart reveals important compatibility patterns, which Eva weaves into the final interpretation and guidance that accompanies your sketch.

The Emotional Power of Your Soulmate Sketch

When clients receive their Eva Bloom Soulmate Sketch, many report an unexpected emotional response. Beyond curiosity or entertainment, the experience often touches something deeper—a resonance that bypasses logical thinking and speaks directly to the heart.

"I didn't expect to cry when I opened the file. Something about the eyes in the drawing felt so familiar, so safe. It wasn't about how attractive they were—it was about feeling **instantly recognized** by this person I haven't even met yet." — Taylor W.

This emotional response is a vital part of the experience. The sketch serves as a powerful visualization tool, helping you connect with the feeling of being loved and understood by your future partner. By engaging with this energy regularly, you begin to align your vibration with the love that awaits you.

Many psychologists and manifestation experts acknowledge that our emotional state and expectations significantly influence our experiences. Your soulmate sketch helps create a positive emotional template for the love you're calling in.

Why People Turn to Eva Bloom's Soulmate Sketch



People seek Eva Bloom's unique service during various chapters of their love journey, each with their own hopes and questions. Understanding these motivations helps frame the true value of the soulmate sketch experience.

Seeking Clarity After Heartbreak

Many clients come to Eva during healing from past relationships, wondering if love is still possible and what healthy love might look like for them.

Navigating Extended Singlehood

Those who have been single for years often seek reassurance that their person exists and insights about why they haven't connected yet.

Breaking Negative Patterns

Clients who repeatedly attract the wrong partners use the sketch and reading to understand their unconscious patterns and realign their energy.

Beyond these common scenarios, many are simply curious about the mystical aspects of love and connection. The sketch offers a tangible way to explore the unseen energies that shape our romantic destinies, providing both comfort and empowerment during the waiting period before meeting their person.

Chapter 2: Real Stories, Real Transformations

The true power of Eva Bloom's work is best understood through the stories of those whose lives have been touched by her soulmate sketches. This chapter explores the journeys of real clients—from initial skepticism to profound revelation, from lonely waiting to joyful connection.

These narratives aren't fairy tales of instant manifestation, but honest accounts of how the sketch experience catalyzed important shifts in perception, self-awareness, and emotional openness. They demonstrate how the sketch serves not as a magic wand, but as a powerful tool for intentional love creation.

As you read these stories, notice the patterns that emerge: increased self-knowledge, release of limiting beliefs, renewed hope, and a deeper understanding of what true compatibility means beyond physical attraction. These are the real gifts of the soulmate sketch journey—gifts that prepare the heart to recognize and welcome authentic love when it arrives.

"The sketch didn't bring my soulmate to my door overnight. What it did was far more valuable—it helped me
them when they did appear in my life six months later." — Jordan L.

From Doubt to Devotion: Chris's Journey



"I ordered the sketch mostly as a joke. My friends were all into it, and I wanted to prove it was just generic nonsense. I was **completely unprepared** for how accurate the reading would be about my relationship blocks. The experience went from amusing to eerily helpful." — Chris R.

Chris ordered Eva's soulmate sketch in May 2025 with healthy skepticism. As a data analyst by profession, he approached metaphysical practices with logical doubt. The sketch arrived within two days—faster than expected—along with a tarot reading that addressed his tendency to intellectualize emotions and avoid vulnerability.

What started as entertainment quickly became a tool for self-reflection. The reading accurately identified his pattern of pursuing emotionally unavailable partners who wouldn't require real intimacy. Six months later, Chris reports being in a promising relationship with someone who embodies several qualities from the sketch—particularly the "kind eyes and patient demeanor" Eva had drawn.

Chris's story illustrates how even skeptics can find value in the soulmate sketch experience when they remain open to its deeper messages about emotional patterns and relationship readiness.

The Emotional Rollercoaster of a First-Time Buyer

"I went from laughing at the concept to being emotionally wrecked in the best possible way. Eva's reading exposed relationship patterns I'd been blind to for years. It wasn't about who my soulmate would be—it was about who **I needed to become** to be ready for them." — Alex M.

Many first-time clients make similar mistakes when approaching the soulmate sketch experience:

Focusing Only on Appearance

Fixating on the physical features in the sketch rather than the emotional essence and energy it represents.

Expecting Instant Results

Becoming impatient when their soulmate doesn't immediately appear, missing the preparation and alignment process.

Ignoring the Reading

Skipping the valuable tarot and astrological insights that explain relationship patterns and necessary healing.

Alex admits to all three mistakes initially, but after revisiting the full package a week later, found profound insights about their tendency to chase emotionally unavailable partners. The sketch became a daily reminder to heal these patterns before their soulmate arrived—which happened eight months later in an unexpected context.

[CLICK HERE TO CHECK DISCOUNTED PRICE \(24HRS LIMITED OFFER\)](#)

The Ritual of Connection

The soulmate sketch is not merely an image to be viewed once and filed away. For many clients, it becomes the centerpiece of a powerful manifestation practice—a daily ritual of connection that aligns energy and intention with their future beloved.

Eva provides a personalized ritual guide with each sketch, offering suggestions for creating sacred space and deepening the connection with your soulmate's energy. These practices help shift your vibration from longing to receiving, from seeking to attracting.

01

Create Sacred Space

Set aside a quiet corner with your sketch, a candle, and perhaps a crystal that resonates with heart energy.

03

Speak Your Truth

Read provided affirmations aloud or create your own loving messages to your future partner, acknowledging them as if they are already in your life.

Many clients report that this ritual becomes a cherished part of their day, bringing comfort during lonely periods and creating a palpable sense of their soulmate's presence in their life before physical meeting.

02

Connect Through Breath

Spend a few minutes in meditation, breathing deeply and imagining your energy expanding to connect with your soulmate across time and space.

04

Journal Insights

Record any feelings, dreams, or synchronicities that arise during this practice, creating a beautiful chronicle of your journey toward union.

The Power of the Astro Compatibility Blueprint

One of the most valuable components of the Eva Bloom Soulmate Sketch package is the detailed astrological compatibility blueprint that accompanies your sketch. This isn't a generic horoscope, but a personalized analysis of your relationship patterns based on your birth chart.

Using your exact birth time and location, Eva maps the astrological influences that shape your approach to love and relationships. This cosmic fingerprint reveals profound insights about your emotional needs, communication style, and unconscious attractions.

The blueprint specifically identifies potential challenges in your love journey, such as:

- Unconscious attraction to emotionally unavailable partners
- Sabotage patterns that emerge when intimacy deepens
- Communication blocks that create misunderstanding
- Inherited relationship beliefs that no longer serve you



This astrological guidance helps you recognize and heal these patterns **before** your soulmate arrives, ensuring you're emotionally ready for the connection when it manifests. Many clients report that this aspect of the reading was even more valuable than the sketch itself for creating lasting love.

Chapter 3: Behind the Scenes with Eva Bloom

Who is the intuitive artist behind these remarkable soulmate sketches? This chapter offers a glimpse into Eva Bloom's world—her background, her creative process, and her commitment to authentic spiritual service.

Understanding the woman behind the art helps contextualize the soulmate sketch experience. Eva approaches each drawing not as a commercial product, but as a sacred conversation between energies—yours, hers, and your future beloved's.

In the pages that follow, you'll discover how Eva developed her unique abilities, how she maintains her energetic clarity despite high demand, and the intentional process she follows for each sketch. You'll also learn about her philosophy on love, compatibility, and the role of spiritual tools in finding authentic connection.

"I don't create these sketches—I simply allow them to flow through me. The connection is already there in the quantum field. My pencil just makes it visible." — Eva Bloom

This behind-the-scenes look reveals not just how the sketches are created, but why they carry such emotional resonance for so many seekers on the path to love.

Meet Eva Bloom: The Artist and Mystic



Eva Bloom's journey to becoming a renowned intuitive artist began in her childhood, where she displayed both artistic talent and unusual sensitivity to energies others couldn't perceive. Formally trained in fine arts, she later deepened her spiritual gifts through study of tarot, astrology, and energy healing.

After a profound spiritual awakening in 2019, Eva began receiving clear intuitive impressions of people's future partners. What started as sketches for friends soon became a calling that has now touched thousands of seekers worldwide.

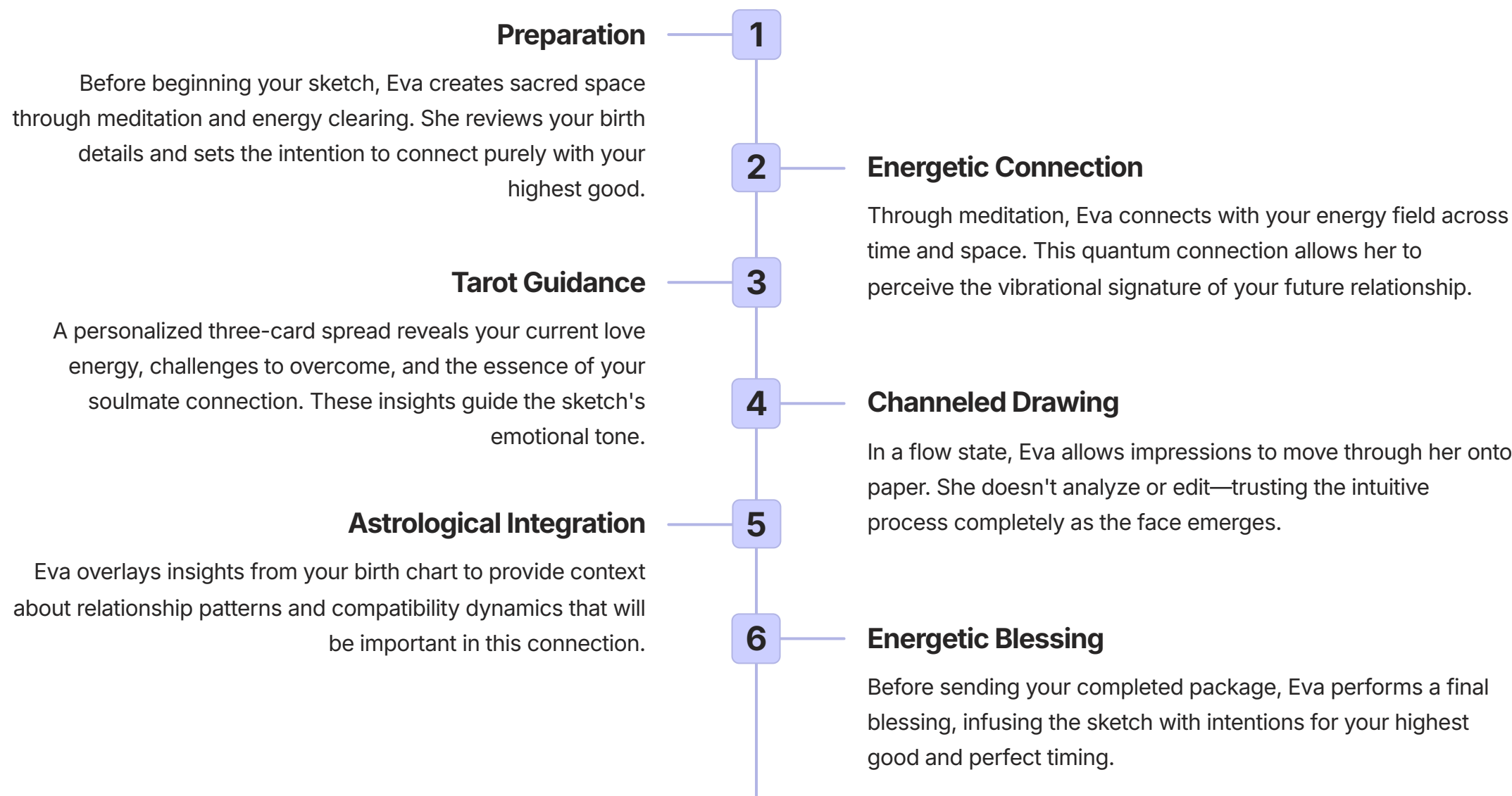
Despite her growing popularity, Eva maintains a deep personal connection with each client. She limits the number of sketches she creates daily to ensure energetic clarity and quality, preferring authentic service over volume.

"Eva's depth and kindness shine through in every interaction. She clearly sees this work as a calling rather than just a business. The is evident—you can feel it." — Jamie S.

Today, Eva works from her light-filled studio in the Pacific Northwest, surrounded by crystals, plants, and artwork from grateful clients who have found their soulmates through her guidance. She continues to refine her gifts through meditation and energy work, ensuring each sketch carries the clearest possible channel to your future love.

The Creative Process: From Energy to Paper

Eva's approach to creating your soulmate sketch involves far more than artistic skill. It's a multi-dimensional process that bridges intuition, energy work, and spiritual guidance.



This thoughtful process ensures that your soulmate sketch is not merely artwork, but a meaningful spiritual tool infused with insight and intention for your love journey.

Inside Eva's Sacred Workspace

The environment where your soulmate sketch is created plays an important role in its energetic quality. Eva's studio is thoughtfully arranged to support clear channeling and creative flow.

Sacred Tools

Each sketch begins with a ritual of preparation. Eva selects from her collection of crystals based on your unique energy—perhaps rose quartz for heart healing, clear quartz for clarity, or moonstone for intuitive connection. These stones surround her drawing paper, creating an energetic container for the work.

Her specially selected pencils and papers are chosen not just for artistic quality, but for their ability to capture subtle energetic impressions. Many clients report feeling a tangible energy when they first view their sketch—a testament to how these materials hold vibrational information.

This thoughtfully curated space enables Eva to maintain the deep focus and clear channel necessary for accurate soulmate sketches, even when creating multiple portraits each day.

Energetic Atmosphere

The studio itself is regularly cleared with sage, palo santo, or sound healing. Soft instrumental music creates a frequency conducive to intuitive flow. Windows overlooking nature provide inspiration and grounding.

Eva's collection of tarot decks—some rare, some gifted by mentors—are stored in silk wraps nearby, ready to provide additional insights for your reading. Her extensive library of astrological references helps her interpret the cosmic patterns shaping your love journey.

Chapter 4: What to Expect When You Order

The journey from curiosity to holding your soulmate sketch in your hands is designed to be simple yet meaningful. This chapter walks you through each step of the process, from providing your information to receiving and working with your personalized sketch package.

Understanding what to expect helps you prepare mentally and emotionally for the experience. While many clients report excitement as their primary emotion, others feel nervous or skeptical—all normal responses to stepping into the unknown territory of future love.

Eva has refined her process to be user-friendly while maintaining the sacred nature of the work. From the moment you place your order to the day you begin working with your sketch as a manifestation tool, each step is infused with intention and care.

The following pages outline the practical aspects of ordering, typical timelines, and how to prepare yourself to receive maximum benefit from your soulmate sketch experience. You'll also find guidance on common questions and concerns that arise during the ordering process.

Step 1: Providing Your Birth Details and Preferences

The accuracy of your soulmate sketch begins with the information you provide. After placing your order through Eva's Etsy shop, you'll receive a prompt to submit essential details that allow Eva to connect with your energy and create a personalized experience.

Required Information

- Your full birth date (month, day, year)
- Your birth time (as accurate as possible)
- Your birth location (city, state/province, country)
- Your current relationship status

Optional Details

- Gender preference (if any) for your soulmate sketch
- Specific questions about your love journey
- Relevant relationship history or patterns
- Any spiritual practices you currently engage in



Why Birth Information Matters

Your birth data creates your astrological blueprint—revealing relationship patterns, compatibility needs, and timing windows for significant connections. The more accurate this information, the more precise your reading will be.

Take time to provide thoughtful, accurate information. If you're unsure about your exact birth time, check your birth certificate or ask family members. Even an approximate time (morning, afternoon, evening) is helpful if the exact hour isn't available.

Step 2: Receiving Your Soulmate Sketch and Reading

After submitting your information, the magical process begins behind the scenes as Eva connects with your energy and creates your personalized soulmate sketch package. Most clients receive their complete package within 1-3 days, though delivery times may extend slightly during periods of high demand.

Your Complete Package Includes:

- Hand-drawn soulmate sketch (digital file)
- Personalized tarot reading interpretation
- Astrological compatibility blueprint
- Manifestation ritual guide
- Personal note from Eva with specific insights

Delivery Method:

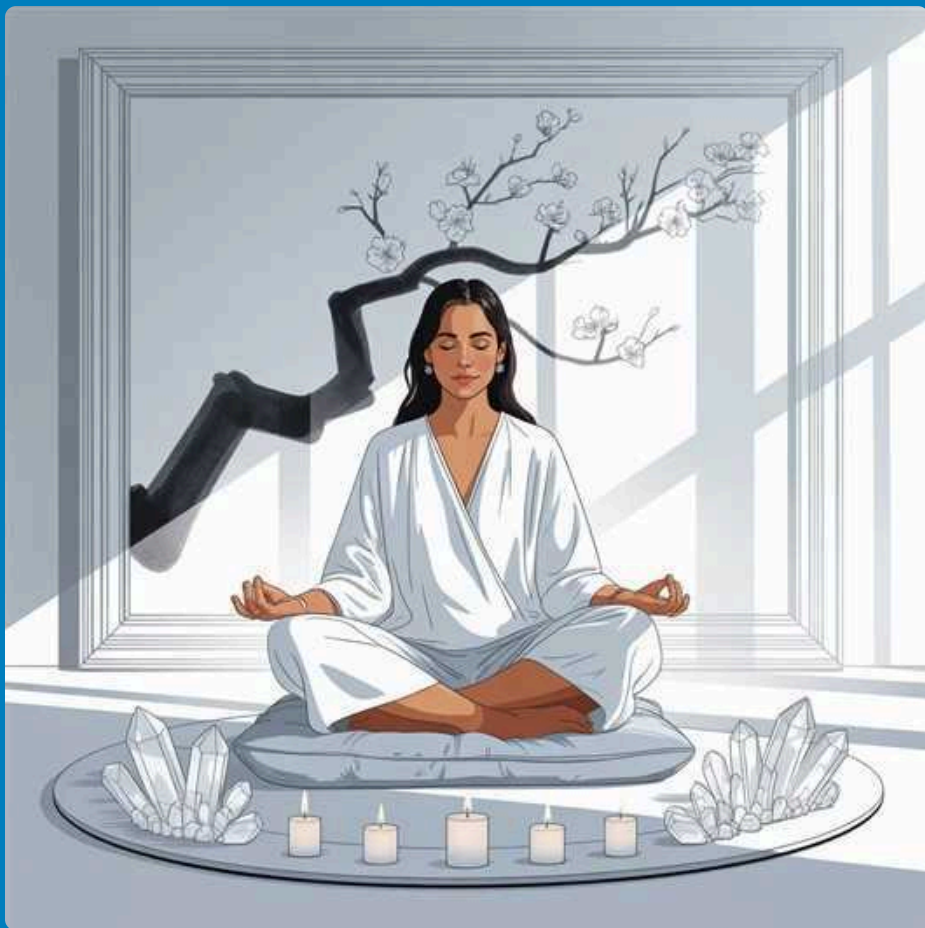
All materials are delivered digitally through Etsy's secure messaging system. Files are provided in PDF format for easy viewing, printing, and saving. Many clients choose to print their sketch and frame it as part of their manifestation practice.

When your package arrives, create a sacred space to receive it. Many clients report that their initial viewing of the sketch is an emotional experience. Find a quiet moment when you can be present and open to the messages coming through both the image and the reading.

Remember that your first impression is important, but the deeper meaning often unfolds over days and weeks as you work with the materials and integrate the insights into your awareness.

[CLICK HERE TO CHECK DISCOUNTED PRICE \(24HRS LIMITED OFFER\)](#)

Step 3: Engaging with Your Sketch



Receiving your soulmate sketch is just the beginning of the journey. How you engage with this powerful tool significantly impacts its effectiveness in your love manifestation process.

Eva provides a detailed ritual guide with each sketch, offering suggestions for creating a daily practice that strengthens your energetic connection to your future beloved. These rituals help shift your vibration from seeking to attracting, from longing to preparing.

Recommended Practices:

- **Morning meditation** with your sketch to set loving intentions for the day
- **Evening reflection** on synchronicities and intuitive nudges
- **Weekly candle ritual** to symbolize growing light and clarity in your love journey
- **Monthly journaling** about your emotional evolution and healing

The most successful clients approach their sketch not as a passive prediction but as an active tool for co-creating their love future. They understand that the sketch represents possibilities that flourish through their participation—through healing old wounds, clearing limiting beliefs, and opening their heart to receive love in its highest form.

Remember that the sketch captures energy, not just appearance. Focus on the feeling the image evokes rather than analyzing specific features. This emotional resonance is what will help you recognize your soulmate when they appear in your life.

Chapter 5: Common Misconceptions and How to Avoid Them

As with any spiritual practice, the soulmate sketch experience can be misunderstood in ways that limit its true potential. This chapter addresses the most common misconceptions that prevent clients from receiving the full benefit of Eva's work.

Understanding these potential pitfalls helps you approach your soulmate sketch with appropriate expectations and an open heart. The difference between disappointment and revelation often lies not in the sketch itself, but in how you relate to it.

By clearing away these misconceptions, you create space for the authentic magic of the experience to unfold. You'll discover that the true value of the soulmate sketch lies not in its predictive accuracy, but in its power to shift your energy, expand your awareness, and align your heart with the frequency of genuine love.

The following pages outline the most common misconceptions Eva has observed in her years of practice, along with guidance on how to avoid these limiting perspectives and embrace the deeper wisdom the sketch offers.

It's Not a Photo or a Crystal Ball

Perhaps the most common misconception about soulmate sketches is viewing them as literal predictions—expecting the drawing to be a photographic representation of your future partner's exact appearance. This misunderstanding can lead to disappointment or missed connections.

What the sketch actually captures is *energetic resonance*, not precise physical features. It's more like an impression of how this person's energy will feel to you, rendered in visual form. While some physical characteristics may indeed manifest, the true recognition often comes from an emotional resonance rather than visual matching.

Similarly, the sketch doesn't function as a crystal ball with exact timing predictions. Your soulmate could appear in your life next month or next year—the sketch doesn't determine when, but rather helps you prepare energetically for whenever that divine timing unfolds.

Many clients report that their actual soulmate "felt like" their sketch, even when the physical resemblance was minimal. This energetic recognition is the true magic of Eva's work.



Reality Check

Your soulmate may share some features with your sketch but look quite different in other ways. The energetic essence—the feeling you get when looking at the sketch—is what you'll recognize when you meet them.



Healthy Approach

View your sketch as a tool for alignment rather than a promise of exact appearance. Stay open to connections that feel right, even if they don't perfectly match your sketch's physical details.

Don't Compare Your Sketch to Others

In today's social media age, it's tempting to share your soulmate sketch online and compare it with others. Many clients join Facebook groups or Reddit communities dedicated to Eva's work, posting their sketches and readings for discussion.

While community support can be valuable, comparison often leads to unnecessary doubt and confusion. Remember that each sketch is uniquely tailored to your specific energy and journey. Differences between sketches reflect the beautiful diversity of soul connections, not quality variations.



Comparison Pitfalls

- Judging sketch quality based on artistic detail rather than energetic resonance
- Feeling envious of perceived "better" soulmates in others' sketches
- Seeking validation from strangers who don't understand your unique journey



Healthier Alternatives

- Focus on your personal connection to your own sketch
- Share experiences of growth and insights rather than visual comparisons
- Trust your intuitive response to your sketch over others' opinions

Eva intentionally creates each sketch with different styles and approaches, guided by the unique energy of each client. What matters is not how "attractive" or detailed your sketch appears compared to others, but how it resonates with your heart and supports your personal love journey.

Patience Is Key: Love Takes Time

In our instant-gratification culture, one of the most challenging aspects of the soulmate sketch experience is embracing patience. Many clients expect their soulmate to appear immediately after receiving their sketch, leading to disappointment when weeks or months pass without meeting "the one."

This misconception treats the sketch as a magical summoning tool rather than what it truly is—a catalyst for internal alignment and preparation. The sketch doesn't create your soulmate or force them to appear; it helps you become energetically ready to recognize and receive them when divine timing brings you together.

"I was so impatient after getting my sketch that I tried to force every date into the mold. Six months later, when I'd finally surrendered to the process and focused on my own growth, my soulmate appeared when I least expected it. The sketch hadn't been about finding them—it had been about to be found." — Morgan L.

The time between receiving your sketch and meeting your soulmate is not empty waiting—it's active preparation. This period allows you to heal old wounds, break unhealthy patterns, and create space in your life for authentic partnership. Trust that this timing is perfect and purposeful, even when it tests your patience.

Trust the Timing of Your Heart

The journey to meeting your soulmate unfolds according to a timeline that honors both your readiness and theirs. This divine timing often operates on a schedule quite different from our human desires and expectations.

Eva's clients who find the most peace and eventual success with their soulmate sketches are those who surrender to this natural unfolding rather than trying to control or accelerate it. They understand that the universe may be orchestrating countless events to bring them together with their beloved at exactly the right moment.



Seeds Need Time

Your sketch plants seeds of awareness and intention that need time to germinate and grow.



Pieces Aligning

Both you and your soulmate may need to complete important life lessons before meeting.



Heart Preparation

This waiting period allows your heart to heal and expand its capacity to receive deep love.

Instead of anxiously watching for your soulmate to appear, use this time to deepen your relationship with yourself. Create the life you want your soulmate to join. Heal old wounds. Expand your capacity for joy. This is the true work of the waiting period—becoming the person who can fully recognize and receive the love that's coming.

Chapter 6: The Science and Spirit of Soulmate Sketches

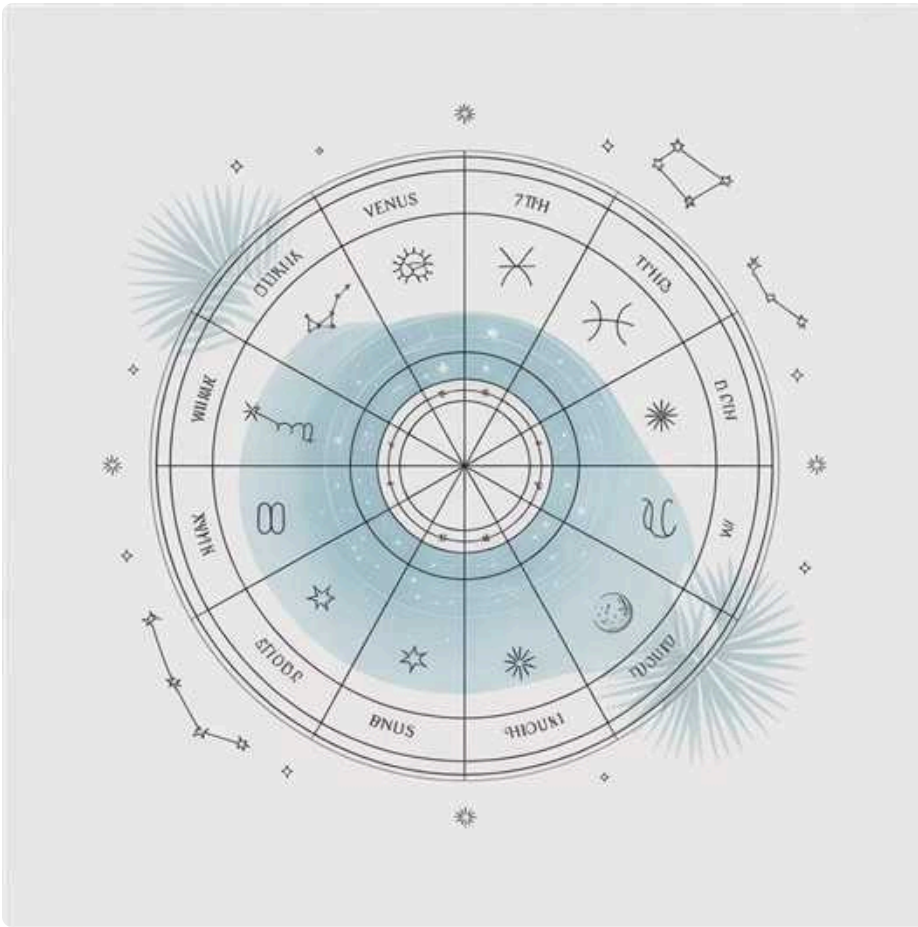
While soulmate sketches may seem purely mystical, they actually operate at the fascinating intersection of spiritual wisdom and emerging scientific understanding. This chapter explores the foundations that make Eva's work effective from both perspectives.

From the ancient traditions of astrology and tarot to modern research in quantum physics and neuropsychology, various disciplines offer frameworks for understanding how visualization and intention can shape our reality—including our romantic futures.

Understanding these principles adds depth to your soulmate sketch experience, helping you engage with it not just as a spiritual curiosity but as a powerful tool grounded in both ancient wisdom and contemporary research.

The following pages explore key concepts that underpin the soulmate sketch process, from the role of astrology in mapping relationship patterns to the neurological impact of visualization and the quantum nature of intention. This knowledge empowers you to work with your sketch more effectively and with deeper understanding.

The Role of Astrology in Love Insights



Astrology provides a sophisticated framework for understanding relationship patterns and compatibility. While skeptics may dismiss it as superstition, many psychologists recognize its value as a symbolic language for exploring personality and interpersonal dynamics.

The astrological blueprint Eva creates as part of your soulmate sketch package examines several key elements in your birth chart that shape your approach to love:

- **Venus placement** reveals what you value and are attracted to in relationships
- **Mars position** shows how you express desire and take action in love
- **7th house** illuminates your approach to partnership and what you seek in others
- **Moon sign** indicates your emotional needs and nurturing style

These cosmic patterns don't determine your fate, but they do highlight tendencies and potentials. Understanding them allows you to work consciously with your natural inclinations rather than being unconsciously driven by them.

For example, if your chart shows a tendency to be attracted to unavailable partners (common with certain Venus-Neptune aspects), recognizing this pattern allows you to heal it rather than repeating it. This astrological self-awareness becomes a powerful tool for breaking cycles and creating space for your true soulmate connection.

Tarot's Guidance on Emotional Blocks

The tarot reading that accompanies your soulmate sketch serves as a mirror to your subconscious mind, revealing hidden patterns and beliefs that may be blocking your path to authentic love. Unlike fortune-telling, modern tarot practice focuses on psychological insight and empowerment.

Eva uses a specialized three-card spread designed specifically for soulmate work:

1

Current Love Energy

This card reveals your present emotional state and approach to relationships, showing whether you're operating from fear, hope, healing, or readiness.

2

Subconscious Blocks

This powerful card illuminates the hidden fears, beliefs, or patterns that may be preventing you from recognizing or receiving your soulmate connection.

3

Healing Pathway

This forward-looking card suggests actions, attitudes, or awareness practices that will help you clear blocks and align with your soulmate's energy.

Many clients report that the tarot insights were the most transformative part of their soulmate sketch package, revealing relationship patterns they hadn't previously recognized. This awareness becomes a catalyst for healing, creating emotional space for authentic connection to enter.

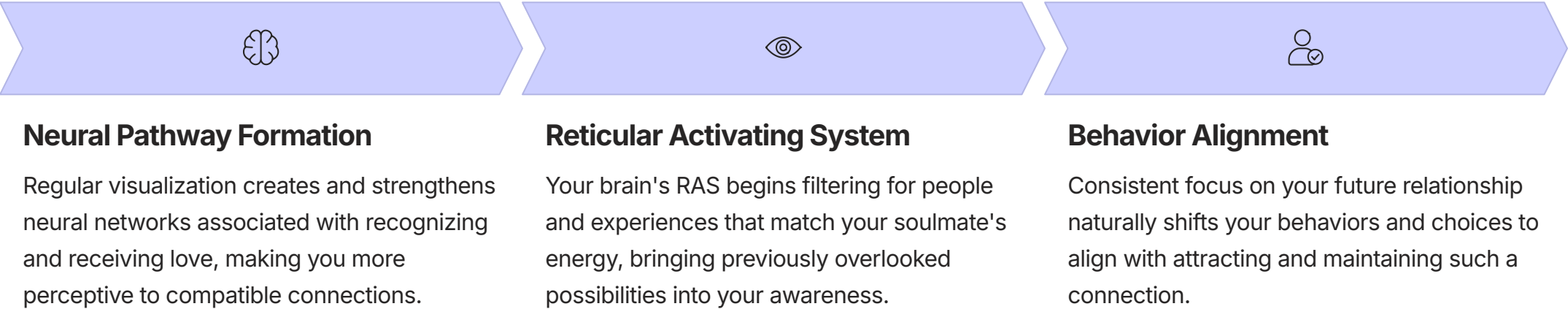
As Carl Jung recognized, tarot imagery speaks directly to the collective unconscious, bypassing logical defenses to deliver profound insight. This makes it a powerful complement to the visual nature of the soulmate sketch.

[CLICK HERE TO CHECK DISCOUNTED PRICE \(24HRS LIMITED OFFER\)](#)

The Psychology of Visualization and Manifestation

Beyond its mystical aspects, the soulmate sketch functions as a powerful visualization tool—a concept supported by extensive psychological research. Visualization techniques have been proven effective in fields ranging from sports performance to healing, and they apply equally to relationship manifestation.

When you regularly engage with your soulmate sketch through meditation and ritual, you create several psychologically significant effects:



Research in neuroplasticity confirms that what we focus on expands in our experience. By regularly engaging with your soulmate sketch, you're essentially programming your mind to recognize and create opportunities for meaningful connection.

This psychological framework explains why many clients report meeting their soulmate after periods of consistent work with their sketch—not because the sketch magically conjured someone, but because it helped attune their awareness to recognize the right person when they appeared.

Chapter 7: Testimonials That Speak Volumes

The true measure of any spiritual practice lies in its impact on real lives. This chapter shares authentic voices from Eva's clients, offering glimpses into the various ways the soulmate sketch experience has transformed their love journeys.

These testimonials represent a wide spectrum of experiences—from initial skepticism to profound revelation, from immediate recognition to gradual unfolding. They demonstrate that while each person's path is unique, certain patterns of transformation consistently emerge.

As you read these stories, you might recognize aspects of your own journey or gain insight into how others have navigated challenges similar to yours. These shared experiences create a tapestry of wisdom that enriches the soulmate sketch community.

The following pages feature selected testimonials that highlight different aspects of the soulmate sketch experience, from the quality of Eva's work to the unexpected ways the sketch catalyzed personal growth and, ultimately, authentic connection.

"Eva is the Real Deal" — A Patient Client's Praise

"After following Eva's work for months, I finally ordered my sketch during a period of deep loneliness. The waiting was difficult—not because Eva was slow (she delivered in just 2 days), but because I was so eager to 'find my person' that I wanted instant results.

What I didn't expect was how . Eva pinpointed patterns I'd been blind to for years—how I was attracted to emotionally unavailable people because of my own fear of true intimacy.

The sketch itself was beautiful, but it was the mirror Eva held up to my own heart that changed everything. Six months of working with her insights led me to therapy, healing, and eventually opening to a connection that feels nothing like my past relationships—in the best possible way.

Eva is the real deal. Despite her high demand, you can feel her personal care and depth in every word. Be gentle with yourself and patient with the process—it's worth it."

— Jamie S., 34, Chicago

Jamie's experience highlights the transformative potential when clients engage deeply with all aspects of the soulmate sketch package, not just the image itself. The insights about relationship patterns often become the catalyst for profound personal growth.

Five-Star Reviews Across Platforms

“

"The accuracy gave me chills! I had goosebumps looking at my sketch. The eyes especially felt so familiar, like I'd known them forever. Eva's reading was spot-on about my tendency to chase unavailable people. Two months after working with her suggestions, I met someone with the exact same kind, gentle energy as my sketch. We're taking things slow, but it feels different from all my past relationships." — Leila M.

”

“

"As a logical, science-minded person, I was skeptical but curious. I approached this as an experiment and was genuinely surprised by how personally relevant the reading felt. The sketch itself was interesting, but the insights about my relationship patterns were what really resonated. Worth every penny for the self-awareness alone." — David K.

”

“

"Fast delivery, amazing drawing, helpful reading. Five stars all the way! Will definitely order again for my sister who's been struggling in relationships." — Chris R.

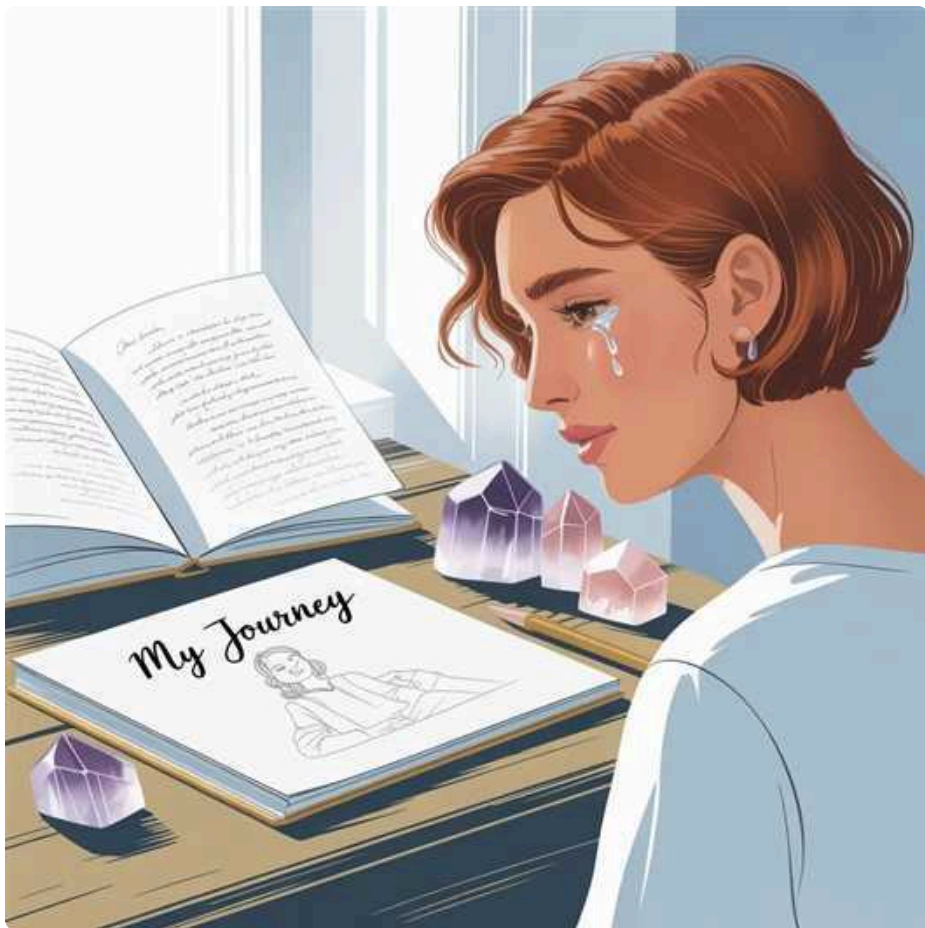
”

Eva maintains an impressive average rating of 4.9/5 stars across multiple platforms, with over 15 glowing reviews on Etsy alone. Common themes in positive feedback include:

- The emotional resonance of the sketch itself
- The accuracy and helpfulness of the accompanying reading
- The surprising depth of insight into relationship patterns
- Eva's professionalism and quick delivery
- The quality of follow-up support and guidance

These consistent high ratings reflect not just client satisfaction but genuine transformation—the hallmark of authentic spiritual service.

Stories of Unexpected Clarity and Healing



Beyond Romance: Deeper Healing

While most clients approach the soulmate sketch seeking romantic connection, many report unexpected healing in other areas of their lives as a result of the experience.

"I ordered the sketch hoping to find my future husband, but what I found instead was myself. Eva's reading gently showed me how my desperate search for partnership was rooted in childhood abandonment issues I'd never addressed.

Working with the sketch became a journey of healing these old wounds. Six months later, I'm not only more open to healthy love—I'm also experiencing better relationships with family, friends, and most importantly, myself."

— Sophia J., 29

Sophia's experience reflects a common pattern: the soulmate sketch often catalyzes healing that extends far beyond romantic relationships. By illuminating core wounds and patterns, it creates an opportunity for holistic transformation that ultimately serves the client's highest good—whether that immediately includes a romantic partner or not.

This broader healing is a testament to the depth of Eva's work and her commitment to authentic spiritual guidance rather than simply telling clients what they want to hear.

Chapter 8: How to Maximize Your Soulmate Sketch Experience

Your soulmate sketch is not a passive prediction but an active tool for transformation. This chapter offers practical guidance for working with your sketch to create maximum impact on your love journey.

The difference between those who report profound results from their sketch and those who feel disappointed often comes down to how they engage with the experience. Like any spiritual practice, the soulmate sketch flourishes with consistent attention and intentional engagement.

The suggestions in the following pages are drawn from the experiences of hundreds of Eva's clients who have successfully worked with their sketches to manifest meaningful connection. These practices help bridge the gap between receiving your sketch and experiencing its manifestation in your life.

While not everyone will resonate with every suggestion, experimenting with different approaches allows you to discover what feels most powerful for your unique journey. The key is consistent engagement rather than passive waiting.

Engage Fully with the Bonus Materials

One of the most common mistakes clients make is focusing exclusively on the sketch itself while neglecting the valuable supplementary materials that come with it. The complete soulmate sketch package contains multiple components designed to work together as a holistic transformation system.

Tarot Reading

Don't just skim this document! It contains crucial insights about your relationship patterns and specific guidance for healing blocks to love. Many clients report that revisiting this reading weekly reveals new layers of understanding as they progress.

Astro Compatibility Blueprint

This detailed astrological analysis provides the cosmic context for your love journey. Use it to understand your relationship tendencies, timing windows for significant connections, and the energetic qualities that create lasting harmony for your specific chart.

Manifestation Rituals

The suggested practices aren't decorative—they're powerful tools for energetic alignment. Clients who consistently implement these rituals report significantly faster and clearer manifestation experiences than those who skip this component.

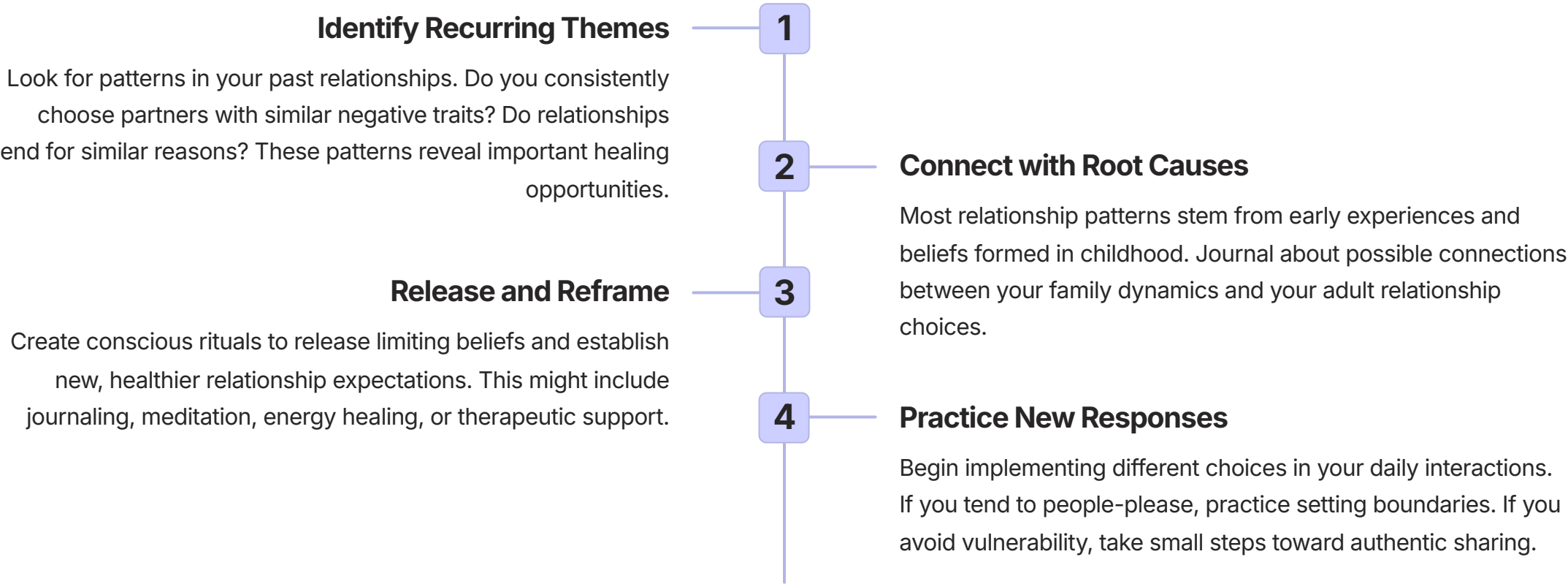


"I almost missed the most valuable part! I was so focused on the sketch that I didn't open the astro blueprint for weeks. When I finally did, it changed everything about how I understood my love patterns."

Consider creating a dedicated time each week to work with all components of your package, perhaps during a special ritual or quiet reflection period. This integrated approach activates the full potential of your soulmate sketch experience.

Reflect on Your Own Relationship Patterns

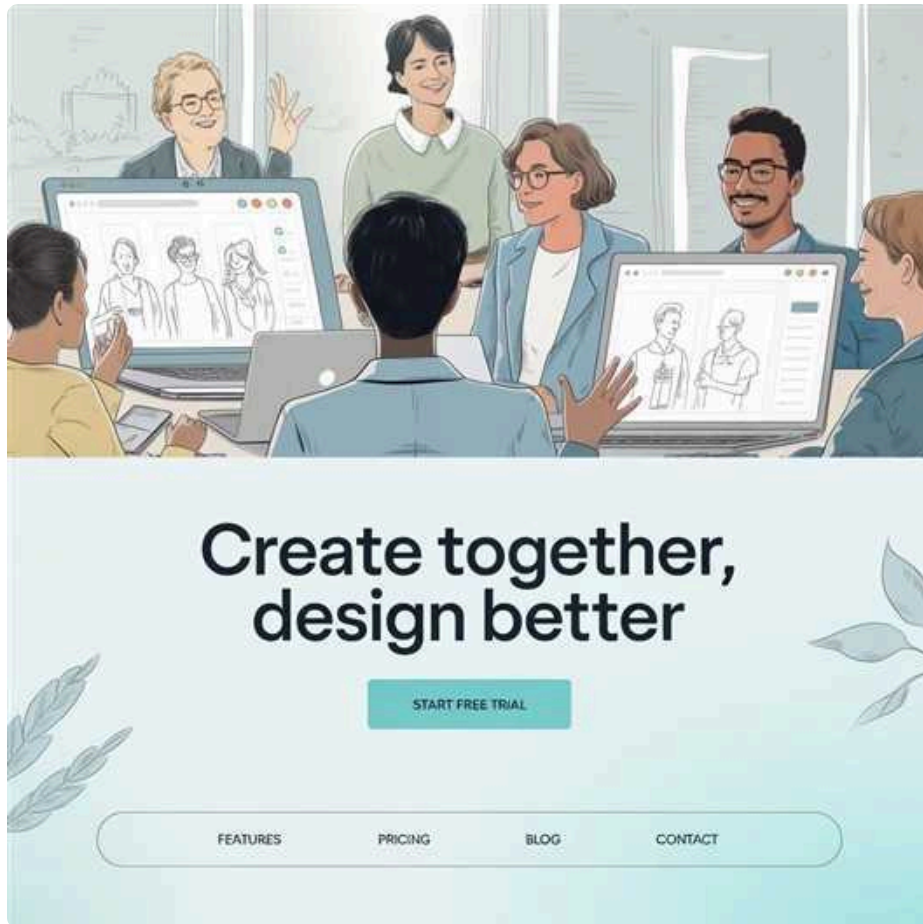
The soulmate sketch works most powerfully when paired with honest self-reflection. Use the insights from your reading as a starting point to explore and heal your own relationship patterns—the unconscious habits that may have prevented authentic connection in the past.



This inner work isn't separate from the soulmate sketch process—it's an essential component. By healing old patterns, you create emotional space for your soulmate to enter. Many clients report that their sketch's physical manifestation occurred shortly after breakthrough moments in their pattern work.

[CLICK HERE TO CHECK DISCOUNTED PRICE \(24HRS LIMITED OFFER\)](#)

Share Your Journey with a Supportive Community



While the soulmate sketch journey is deeply personal, it needn't be solitary. Many clients find that sharing their experiences with others who understand enhances their growth and provides valuable perspective during challenging moments.

Eva maintains several community spaces where sketch recipients can connect, share insights, and support each other's journey:

- A private Facebook group for sketch recipients
- Monthly virtual circles for sharing experiences and insights
- A comment section on Eva's blog where clients discuss their manifestation stories

These communities offer encouragement during waiting periods, celebration of synchronicities and manifestations, and wisdom from those further along the journey.

Community Guidelines for Healthy Sharing

- **Avoid comparison** between sketches or timelines—each journey is unique
- **Focus on growth** rather than appearance or superficial details
- **Share vulnerably** but maintain appropriate boundaries
- **Celebrate others'** breakthroughs and manifestations genuinely

While community support can be valuable, always trust your own intuition about your sketch and journey. External validation is no substitute for your personal connection with the process.

Chapter 9: Frequently Asked Questions

As Eva has worked with thousands of clients, certain questions arise consistently about the soulmate sketch experience. This chapter addresses the most common inquiries, providing clear information to help you navigate your journey with confidence.

Understanding these practical aspects removes unnecessary confusion and allows you to focus on the transformative potential of your sketch. From concerns about accuracy to questions about the process, these FAQs cover the essential information most seekers want to know.

If you have questions beyond what's covered here, Eva welcomes direct inquiries through her Etsy shop messaging system. She's committed to ensuring every client feels informed and supported throughout their soulmate sketch experience.

The following pages address the most frequently asked questions about ordering, receiving, and working with your soulmate sketch. This information helps set appropriate expectations and prepares you for a meaningful experience.

How Accurate Are the Sketches?

This is perhaps the most common question Eva receives, and it reflects a natural desire for certainty in matters of the heart. The answer requires understanding what "accuracy" means in the context of intuitive artwork.

Eva's sketches are not intended to be photographic predictions of exact physical features. Rather, they capture the **energetic essence and emotional signature** of your future connection. This distinction is crucial for setting appropriate expectations.

Client experiences with accuracy typically fall into three categories:

Energetic Resonance (Most Common)

Clients report that while their actual soulmate may not look exactly like the sketch, the energy, expression, or "feeling" of the person is remarkably similar. This emotional recognition is often described as more meaningful than physical matching.

Key Feature Similarity

Many clients note that specific distinctive features from their sketch—such as unusual eyes, a characteristic smile, or a specific hairstyle—do manifest in their soulmate, while other features may differ.

Surprising Physical Resemblance

In some cases, clients report striking physical similarity between their sketch and their eventual partner. These instances, while not the majority, demonstrate the potential for detailed physical accuracy.



Factors Affecting Accuracy

- Quality of birth information provided
- Client's openness to the process
- Clarity of energetic connection
- Divine timing considerations

The most meaningful measure of accuracy is not visual matching but the sketch's effectiveness as a tool for alignment and recognition. Many clients report that the sketch helped them recognize their soulmate through an intuitive "knowing" that transcended physical appearance.

Can I Order for Someone Else?

Yes, you can order a soulmate sketch as a gift for someone else, provided you have their consent and accurate birth information. Soulmate sketches make meaningful gifts for friends or family members who are open to spiritual guidance in their love journey.

Guidelines for Gifting

- Always obtain the recipient's permission before ordering
- Ensure you have accurate birth date, time, and location
- Consider whether they're open to spiritual approaches
- Provide their email for direct delivery or request delivery to yourself

Perfect Gift Occasions

- Birthdays for single friends seeking clarity
- Post-breakup support for loved ones in transition
- Graduation gifts for those entering new life phases
- Self-care packages for friends on healing journeys

When gifting a soulmate sketch, it's important to present it thoughtfully. Explain that it's not just entertainment but a tool for self-discovery and alignment. Consider pairing it with a journal for recording insights or a special candle for the suggested rituals.

⊗ Important Note on Consent

Eva does not create sketches for people who haven't consented to the process. The energetic connection required for accurate reading necessitates the subject's awareness and openness. Surprise sketches without prior permission cannot be accommodated.

Gift certificates are also available if you'd like to let the recipient initiate the process themselves when they feel ready.

What If I Don't Believe in Tarot or Astrology?



Eva welcomes clients from all belief backgrounds, including skeptics and those from traditions that don't embrace divination practices. The soulmate sketch experience can be valuable regardless of your perspective on its metaphysical aspects.

Many clients with scientific or analytical backgrounds approach the process as a useful psychological tool rather than a supernatural one. From this perspective, tarot and astrology function as frameworks for exploring relationship patterns and accessing intuitive wisdom—similar to how Jungian psychology uses archetypes and symbolism.

The sketch itself can be viewed as a powerful visualization tool that helps clarify your desires and expectations in partnership. Research shows that clear visualization positively impacts goal achievement across many areas of life, including relationships.

"As a physician with a science background, I approached this as an interesting psychological exercise rather than a mystical experience. I was surprised to find genuine value in reflecting on the relationship patterns highlighted in the reading. Whether it's divination or just good intuitive psychology doesn't matter—it gave me useful insights either way." — Dr. Sarah K.

Eva presents her insights in accessible language that respects different belief systems. You're welcome to interpret the experience in whatever framework feels authentic to you—the value lies in the personal insights and alignment it creates, regardless of how you explain the mechanism.

How Long Does Delivery Take?

Eva understands the excitement and anticipation that comes with ordering your soulmate sketch. While she strives for prompt delivery, she also maintains high standards for energetic clarity and detail in each creation.

1-3

Standard Delivery Days

Under normal circumstances, you can expect to receive your complete soulmate sketch package within 1-3 days of placing your order.

5-7

Peak Season Days

During high-demand periods (Valentine's season, New Year, etc.), delivery may extend to 5-7 days due to increased order volume.

24

Rush Order Hours

For urgent situations, Eva offers limited rush delivery options that guarantee completion within 24 hours for an additional fee.

All sketches and readings are delivered digitally through Etsy's messaging system, allowing for immediate access once completed. You'll receive a notification email when your package is ready for viewing and download.

Eva values transparency in her process. If unexpected delays occur due to high volume or other factors, she communicates proactively with affected clients. Her commitment to quality means she won't rush a reading at the expense of depth and accuracy.

Many clients report that the anticipation period becomes part of the meaningful experience, creating space for reflection on what they truly seek in partnership.

[CLICK HERE TO CHECK DISCOUNTED PRICE \(24HRS LIMITED OFFER\)](#)

Can I Request Revisions?

Unlike conventional commercial artwork, soulmate sketches are one-time intuitive channeling experiences rather than iterative design projects. This fundamental difference shapes Eva's approach to revisions and feedback.

The sketch represents what Eva intuitively receives when connecting with your energy and your future soulmate's essence. It's not created based on your preferences or expectations, but rather on the authentic energetic impression that comes through during the channeling process.

For this reason, standard revisions as you might expect with commercial artwork (changing features, expressions, etc.) are not typically offered. The sketch is meant to reveal what you need to see, which may differ from what you expect or hope to see.

However, Eva does distinguish between two important situations:

This policy preserves the integrity of the intuitive process while ensuring you receive clear, quality materials. Most clients find that aspects of the sketch that initially seem unexpected or "wrong" often make sense later in their journey—sometimes in surprising ways that couldn't have been anticipated.

Eva approaches all feedback with compassion and care, ensuring you feel heard while maintaining the authentic nature of the intuitive reading.



Clarification vs. Revision

Eva welcomes questions about elements in your sketch or reading that you find unclear or confusing. She's happy to provide additional context or explanation about what she perceived during the creation process.



Technical Issues

If there are genuine technical problems with your delivery (blurred image, corrupted file, etc.), Eva will promptly address these issues to ensure you receive a clear, complete package.

Chapter 10: The Cultural Phenomenon of Soulmate Sketches

Beyond individual experiences, soulmate sketches have emerged as a noteworthy cultural phenomenon reflecting broader trends in how people approach love, spirituality, and self-discovery in the digital age. This chapter explores the wider context that has made Eva's work resonate with thousands of seekers worldwide.

Understanding this cultural landscape helps place your personal soulmate sketch journey within a larger movement—one that blends ancient wisdom traditions with contemporary approaches to relationship and personal growth.

From social media virality to serious academic interest in modern spiritual practices, the soulmate sketch phenomenon represents a fascinating intersection of art, psychology, spirituality, and technology. It reflects our enduring human desire for meaningful connection in an increasingly disconnected world.

The following pages examine how soulmate sketches fit within evolving attitudes toward love and spirituality, particularly among younger generations seeking authentic connection in both romantic and metaphysical realms.

The Rise of Spiritual Art in Modern Dating

The growing popularity of soulmate sketches reflects a broader cultural shift toward integrating spiritual practices into the search for love. This trend emerges from several converging cultural currents:

Dating App Disillusionment

After years of algorithm-driven connections, many seekers crave deeper, more meaningful approaches to finding partnership. Spiritual tools offer an alternative to the often superficial swiping culture.

Spiritual Renaissance

Millennials and Gen Z have embraced personalized spiritual practices outside traditional religious frameworks, creating space for intuitive arts to flourish in mainstream culture.

Meaning-Seeking in Relationships

Today's seekers increasingly view relationships as vehicles for growth and purpose rather than just companionship, aligning with the deeper insights offered through spiritual art.



"I've tried every dating app out there. The sketch offered something different—a connection to something deeper than algorithms and surface attraction." — Taylor, 27

Social media has amplified this phenomenon, with hashtags like #SoulmateSketch and #TwinFlameArt generating millions of views across platforms. While skeptics dismiss it as a passing trend, the deeper resonance with authentic human desires for meaningful connection suggests this approach fills a genuine need in modern dating culture.

The Intersection of Art, Astrology, and Psychology

Eva Bloom's soulmate sketch process represents a fascinating convergence of distinct disciplines that traditionally operated in separate spheres. This interdisciplinary approach is part of what makes the experience so uniquely powerful.

Artistic Expression

The visual language of portraiture captures nuance and emotion that words alone cannot express, creating an immediate, intuitive connection to your future beloved.

Spiritual Connection

Intuitive channeling and energy work access deeper dimensions of knowledge beyond rational understanding, honoring the mystery of soul connections.



Astrological Wisdom

Ancient systems of pattern recognition provide structure and context for understanding relationship dynamics and compatibility across time.

Psychological Insight

Modern understanding of attachment styles, relationship patterns, and emotional healing offers practical pathways for growth and readiness.

This integration reflects a broader cultural movement toward holistic approaches that honor both scientific understanding and spiritual wisdom. Rather than seeing these as opposing forces, contemporary seekers increasingly recognize their complementary nature.

Academic interest in this intersection is growing, with researchers in fields from anthropology to neuroscience studying how visualization, ritual, and belief influence relationship formation and satisfaction. The soulmate sketch sits at this fascinating crossroads of ancient practice and emerging research.

Chapter 11: The Emotional Impact of Receiving Your Sketch

While the practical aspects of ordering and receiving your sketch are important, equally significant is preparing for the emotional journey that often accompanies this experience. This chapter explores the range of feelings clients typically encounter and offers guidance for navigating them consciously.

The soulmate sketch often evokes surprisingly strong emotional responses—from tears of recognition to unexpected anxiety, from profound hope to temporary doubt. Understanding that these reactions are normal and meaningful helps you engage with them as valuable aspects of your journey rather than distractions.

The emotional impact of the sketch experience can be as transformative as the practical insights it provides. By approaching these feelings with awareness and compassion, you can extract deeper meaning from your response and use it as a guide for your ongoing love journey.

The following pages explore common emotional responses to the soulmate sketch and offer wisdom for working with these feelings in ways that support your growth and manifestation process.

From Skepticism to Emotional Awakening



Many clients begin their soulmate sketch journey with healthy skepticism—a natural and appropriate response to exploring unfamiliar spiritual territory. This initial doubt often transforms into something unexpected when the sketch and reading arrive.

"I ordered mostly out of curiosity, not expecting much. When I opened the file, something about the eyes in the sketch hit me in a place I didn't know was there. I found myself crying, which made no logical sense—it's just a drawing of someone I haven't met. But something in me glowed in that image." — Alex T.

This emotional awakening happens even for clients who consider themselves logical or analytical. The sketch seems to bypass intellectual filters and speak directly to deeper knowing—what some traditions call the heart's wisdom or soul recognition.

The transition from skepticism to emotional response often marks an important opening in the client's journey—a willingness to consider possibilities beyond their usual framework. This openness becomes fertile ground for the manifestation process that follows.

If you experience unexpected emotions when receiving your sketch, allow them to flow without judgment. These feelings often contain important messages about your readiness for love and the specific healing that might prepare you for your soulmate connection.

Healing Old Wounds Through New Perspectives

For many clients, the soulmate sketch experience becomes a powerful catalyst for emotional healing—particularly around past relationship wounds and disappointments. The sketch and reading often illuminate patterns that have remained hidden despite years of searching and questioning.

“

"Eva's reading pointed directly to my fear of abandonment from childhood that was sabotaging my adult relationships. I'd been to therapy for years but somehow never made this specific connection. Seeing it clearly allowed me to finally address the real issue instead of just its symptoms." — Jordan M.

”

“

"The sketch showed a gentle, kind face—completely different from my usual 'type' that always led to drama and pain. It helped me realize I was confusing intensity for love and choosing partners who reinforced my low self-worth. This awareness changed everything about how I date now." — Riley S.

”

“

"I broke down crying when Eva's reading described my pattern of choosing emotionally unavailable partners because I didn't believe I deserved complete love. The sketch showed someone looking at me with total acceptance—something I realized I'd never allowed myself to receive." — Jamie L.

”

This healing dimension often surprises clients who approach the process focused on finding their future partner rather than healing themselves. Yet this inner healing creates the necessary foundation for authentic partnership to enter.

The sketch acts as both mirror and window—reflecting current patterns while offering a glimpse of new possibilities. This dual perspective creates a powerful container for transformation that many traditional therapeutic approaches can't achieve alone.

Empowerment Through Self-Knowledge

Beyond the initial emotional response and healing insights, many clients report a profound sense of empowerment that emerges from the soulmate sketch experience. This empowerment stems from several sources:

Confirmation of Inner Knowing

The sketch often validates intuitive feelings clients have had but perhaps dismissed as wishful thinking. This external confirmation strengthens trust in their own inner guidance.

Clarity About Authentic Desires

Many discover that what they truly want in partnership differs from what they thought they wanted or what culture conditioned them to seek. This clarity allows for more aligned choices.

Agency in Love Creation

Rather than waiting passively for "the one" to appear, clients recognize their active role in creating conditions for authentic love through inner work and conscious choices.



"Before my sketch, I felt like finding love was something that happened to you or didn't. Now I understand it's something I participate in creating through my own healing and choices."

This shift from passive waiting to active co-creation represents one of the most valuable outcomes of the soulmate sketch journey. Clients move from feeling like victims of romantic circumstance to empowered creators of their love story.

The visualization provided by the sketch supports this empowerment by making the abstract concept of "future love" tangible and specific. This concreteness helps clients align their choices and energy with the relationship they're calling in.

Chapter 12: Beyond the Sketch — Manifesting Your Soulmate

While receiving your soulmate sketch is a significant milestone, it marks the beginning rather than the end of your manifestation journey. This chapter explores the practical and energetic work that transforms the sketch from possibility to reality in your life.

The time between receiving your sketch and meeting your soulmate is not empty waiting but active preparation. This period of alignment and magnetization plays a crucial role in determining both the timing and quality of your eventual connection.

Eva provides specific guidance for this manifestation phase with each sketch, but this chapter offers additional wisdom gleaned from hundreds of successful client journeys. These practices help you become energetically ready to not just attract but also recognize and receive your soulmate when they appear.

The following pages outline powerful approaches for working with your sketch as an active manifestation tool—creating the internal and external conditions for your soulmate to enter your life with perfect timing and alignment.

[CLICK HERE TO CHECK DISCOUNTED PRICE \(24HRS LIMITED OFFER\)](#)

Setting Intentions with Your Sketch



Intention setting creates the energetic foundation for manifestation work with your soulmate sketch. Unlike passive wishing or hoping, intentional practice involves clear focus, emotional engagement, and aligned action.

01

Create Sacred Space

Designate a special place for your sketch, perhaps with meaningful objects that represent love and partnership. This physical focus point helps anchor your intentions.

02

Clarify Your Intention

Write a clear statement about the relationship you're calling in, focusing on feelings and qualities rather than specific timelines or demands.

03

Engage All Senses

Incorporate sensory elements that evoke the feeling of partnership—perhaps a candle with a scent you associate with romance or music that opens your heart.

04

Regular Renewal

Revisit and renew your intention during significant moon phases, particularly new moons for planting seeds and full moons for illuminating blocks.

Effective intention work balances clarity with surrender—being specific about the essence you desire while remaining open to how it manifests. Many clients find that their soulmate arrives in unexpected circumstances quite different from their imagined scenarios.

The sketch serves as a powerful visual anchor for these intentions, helping maintain focus and emotional connection to the future relationship you're calling in. Looking at it regularly while feeling the emotions of partnership creates a vibrational alignment that accelerates manifestation.

Rituals to Enhance Manifestation

Ritual creates a bridge between ordinary and sacred time, between conscious desire and subconscious creation. Incorporating your soulmate sketch into meaningful rituals can significantly amplify its manifestation power.



New Moon Clarity Ritual

- Place your sketch in moonlight (or symbolically if indoors)
- Light a white or pink candle for new beginnings
- Write qualities you're cultivating to prepare for partnership
- Speak these intentions aloud while gazing at your sketch



Release and Receive Ritual

- Create two lists: patterns to release and qualities to receive
- Safely burn the release list while stating "I now release what no longer serves my highest love"
- Place the receive list under your sketch for 7 days
- Anoint the corners of your sketch with rose or lavender oil



Daily Connection Practice

- Begin each morning with 2 minutes gazing at your sketch
- Speak directly to your soulmate as if they can hear you
- Share gratitude for their presence in your future
- Affirm: "I am open to recognizing you when we meet"

These rituals work on multiple levels—they program your reticular activating system to notice potential connections, align your energy with partnership frequency, and create psychological readiness for love. The consistency of practice matters more than elaborateness; even simple daily acknowledgment creates powerful momentum.

Many clients report that synchronicities and "coincidences" increase noticeably after establishing regular ritual practice with their sketch—a sign that manifestation energy is building.

Chapter 13: How to Order Your Eva Bloom Soulmate Sketch

If you've followed this journey through the Eva Bloom Soulmate Sketch experience and feel called to discover your own future beloved, this chapter provides practical guidance for placing your order. The process has been designed to be straightforward while honoring the sacred nature of the work.

Eva offers several package options to accommodate different needs and preferences. Understanding these options helps you select the experience that best aligns with your specific love journey and manifestation goals.

The ordering process itself becomes the first step in your manifestation journey—a declaration of readiness and openness to receiving love in its highest form. Approaching this step with clear intention and authentic desire creates a strong foundation for the work to come.

The following pages walk you through each aspect of ordering your soulmate sketch, from selecting the right package to providing the information Eva needs to create your personalized experience.

Step-by-Step Ordering Guide

Selecting Your Package

Eva offers several options to accommodate different needs and budgets. All packages include a hand-drawn soulmate sketch, but vary in the depth of accompanying materials:

- **Basic Sketch (\$30):** Hand-drawn portrait with brief intuitive notes
- **Essential Package (\$40):** Sketch with tarot reading and basic compatibility insights
- **Complete Journey (\$50):** Comprehensive package with extended reading, full astro blueprint, and personalized manifestation rituals

Most clients choose the Complete Journey for its holistic approach to manifestation, though all packages provide meaningful guidance. Consider which aspects of the journey feel most important to you when selecting.

Eva typically acknowledges orders within 24 hours and provides an estimated delivery timeline. During high-demand periods, she may temporarily limit new orders to maintain quality and personal attention for each client.

Placing Your Order

01

Visit Eva's Etsy Shop

Search for "EvaBloomTarot" on Etsy or follow direct links from Eva's website or social media.

02

Select Your Package

Review the options and choose the one that resonates with your needs and budget.

03

Complete Checkout

Follow Etsy's secure checkout process to complete your purchase.

04

Provide Your Details

After purchase, you'll receive a form requesting your birth information and any specific questions or preferences.

[Visit Eva's Etsy Shop](#)

Tips for a Smooth Experience

To receive maximum benefit from your soulmate sketch experience, consider these recommendations from Eva and successful past clients:

Provide Accurate Birth Information

The precision of your astrological insights depends on accurate birth time and location. Check your birth certificate or ask family members if you're unsure. Even an approximate time (morning, afternoon, evening) is better than guessing randomly.

Set Clear Intentions

Before ordering, spend time reflecting on why you're seeking this guidance. Setting clear intentions about what you hope to learn or transform creates a stronger energetic foundation for the work.

Maintain Emotional Openness

The sketch may reveal insights or suggest directions different from your expectations. Approaching with openness rather than rigid preconceptions allows for deeper discovery and transformation.

Prepare Sacred Space

Before your sketch arrives, create a special place where you'll first view it and later work with it. This might be as simple as clearing a space on your desk or as elaborate as setting up an altar with meaningful objects.

Special Considerations

- If you're currently in a relationship but questioning its future, be transparent about this in your order notes.
- If you've recently experienced significant trauma or loss, consider whether this is the right time for this work or whether healing support might be needed first.
- If you have specific spiritual practices or beliefs, mention these so Eva can frame guidance in resonant terms.

The most important preparation is internal—cultivating an attitude of curious openness rather than anxious expectation. This receptive state allows the full magic of the experience to unfold.

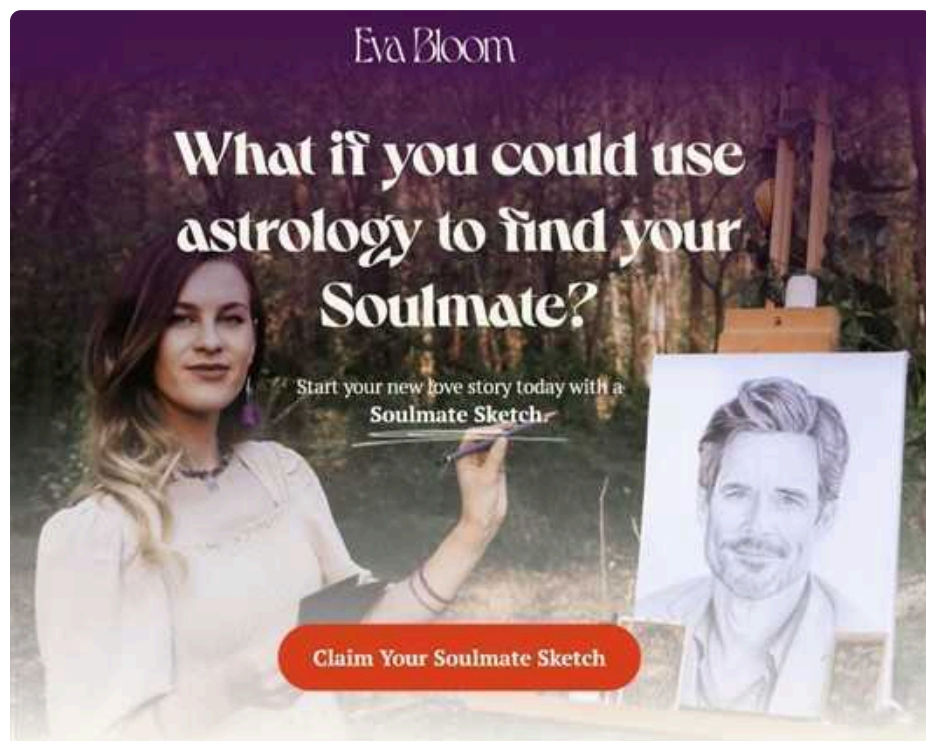
Chapter 14: Final Thoughts — Embrace Your Love Journey

As we reach the conclusion of this exploration into the Eva Bloom Soulmate Sketch experience, it's worth reflecting on the deeper significance of this journey you're considering. Beyond the excitement of glimpsing your future beloved lies an invitation to profound self-discovery and spiritual growth.

The soulmate sketch represents more than a prediction or a promise—it's a mirror reflecting your own capacity for love, a window into possibilities yet to unfold, and a compass pointing toward your heart's true north. How you engage with this tool will shape its impact on your love story.

The pages that follow offer final wisdom for approaching this journey with the openness, patience, and self-compassion that create fertile ground for love to blossom. Whether you order your sketch today or simply carry these insights into your continuing search for connection, may your path be illuminated by the knowing that love is not just something you find—it's something you become ready to recognize and receive.

Your Soulmate Sketch Is More Than Art — It's a Mirror to Your Heart



As you consider embarking on your own soulmate sketch journey, remember that the true magic lies not in the sketch itself, but in how it awakens your capacity for authentic connection. The drawing serves as a catalyst—a sacred mirror reflecting both who you are becoming and who awaits you on the path ahead.

"The sketch doesn't create your soulmate—it reveals what your heart already knows. The journey between that revelation and your actual meeting is where the real transformation happens." — Eva Bloom

This journey asks for your participation—your willingness to heal old wounds, release limiting beliefs, and expand your capacity to both give and receive love. It invites patience, trust, and the courage to remain open even when the path seems uncertain.

Whether your soulmate appears next month or next year, the work you do with your sketch prepares you to recognize and receive them when divine timing brings you together. This preparation itself is a precious gift—creating a stronger, more authentic foundation for the love that awaits.

Eva's clients who find the greatest fulfillment approach their sketch not as a magical solution but as a sacred conversation—with themselves, with the universe, and with the beloved who exists in potential. They understand that the sketch marks not the end of searching but the beginning of conscious creation.

[CLICK HERE TO CHECK DISCOUNTED PRICE \(24HRS LIMITED OFFER\)](#)