

# The Balcones Canyonlands Preserve

unlock MLS

AUSTINboard  
ofREALTORS®







The Balcones Canyonlands Preserve (BCP) is a system of preserves spanning over 32,000 acres and serves as a protective umbrella for two migratory songbird species, six cave-dwelling invertebrate species, and 27 other species. The BCP is permitted by the U.S. Fish & Wildlife Service (USFW) and the permit is held by the City of Austin and Travis County. Through the safeguarding of these vulnerable species, the BCP ensures the preservation of the entire ecosystem. Beyond being critical habitat for endangered species, these lands also support numerous native plants and animals, contributing to enhanced air and water quality.

## WHERE IS THE BALCONES CANYONLANDS PRESERVE (BCP)

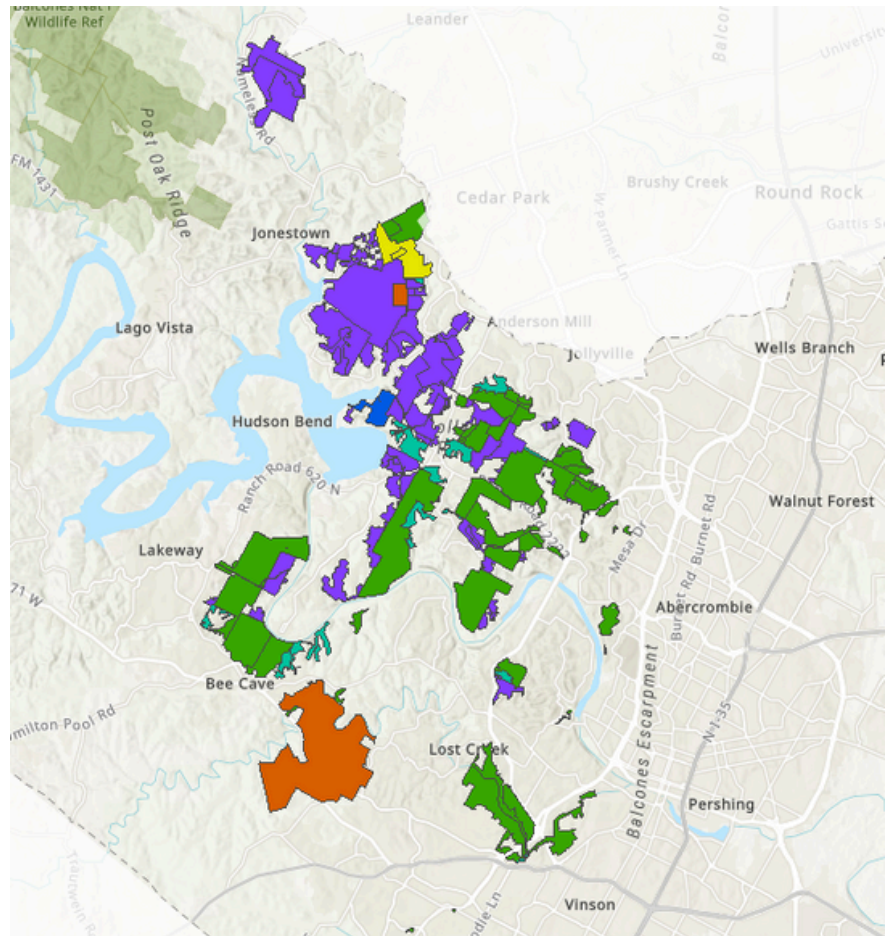
The BCP is not a singular expanse but rather a comprehensive system of preserves encompassing more than 50 square miles in western Travis County. The Habitat Conservation Plan protected ~30% of the best closed-canopy woodland habitat for endangered Golden-cheeked Warbler in exchange for development on up to ~70% of the remaining habitat. Multiple partners manage the Balcones Canyonlands Preserve. The two largest land managers are the City of Austin and Travis County, who together manage 80% of the preserve.

### BCP Public Access

#### Land Manager

-  Travis County
-  City of Austin
-  Lower Colorado River Authority
-  Private Land Manager
-  The Nature Conservancy
-  Travis Audubon Society

## INTERACTIVE MAP



## SPECIES AND WILDLIFE

The BCP is home to a host of species and wildlife. Larger natural areas protect diverse species, create vital wildlife corridors, and shield sensitive species. The BCP's focus on preserving large tracts of land also safeguards terrain, supporting rare invertebrates and maintaining crucial ecological functions, including clean water sources for humans. Species in the BCP include:

- Golden-Cheeked Warbler
- Tooth Spider Psuedoscorpion
- Tooth Cave Spider
- Tooth Cave Ground Beetle
- Kretschmar Cave Mold Beetle
- Bee Creek Cave Harvestman
- Bone Cave Harvestman
- Jollyville Plateau Salamander

## GET INVOLVED

There are many ways to get involved with the BCP and learn more about these unique, beautiful spaces. Sign up for guided hikes and volunteer opportunities with Austin Water Wildland Conservation at [austintexas.gov/wildlandevents](https://austintexas.gov/wildlandevents). Find opportunities to get involved across the BCP through the [BCP Partner Events Calendar](#).



**MORE INFO**

## WHAT IF I LIVE NEAR THE BCP?

- Keep in mind, it is illegal to dump any materials on the preserve, including cut branches and yard trimmings. It often presents a hazard to wildlife and can increase the risk of wildfire. If you see anyone dumping on the preserve, please report it to preserve staff.
- Weekly guided hikes and volunteer opportunities exist across the preserve. Trespassing on areas of the preserve that are not open for unguided access may be prosecuted.
- A permit is required to disturb or remove endangered species' habitat any time of year. No one, not even permit-holders, can disturb the birds' habitat during nesting season (March 1 to August 31). For help determining whether you may have endangered species on your property, and to learn about obtaining a permit and mitigation options, see Development in Endangered Species Habitat.
- The best way to protect your home from wildfire is to create defensible space, including "hardening" your home by sealing openings, screening vents, and cleaning gutters. Learn more about creating defensible space from the Central Texas-specific [Ready, Set, Go!](#) The Travis County Fire Marshal's site will also tell you if a burn ban is in effect.



Scan this QR code or [click here](#) for the BCP Wild Neighbors Speaker Series



Scan this QR code to sign up for guided hikes and volunteer Opportunities