

EN

CLOSER

SWAROVSKI OPTIK

THERMAL IMAGING SPECIAL

WITH
DARKNESS
COMES

RE
SPON
SIBILITY

SUCCESS
IN THE
NIGHT

SEE THE UNSEEN

tM
35

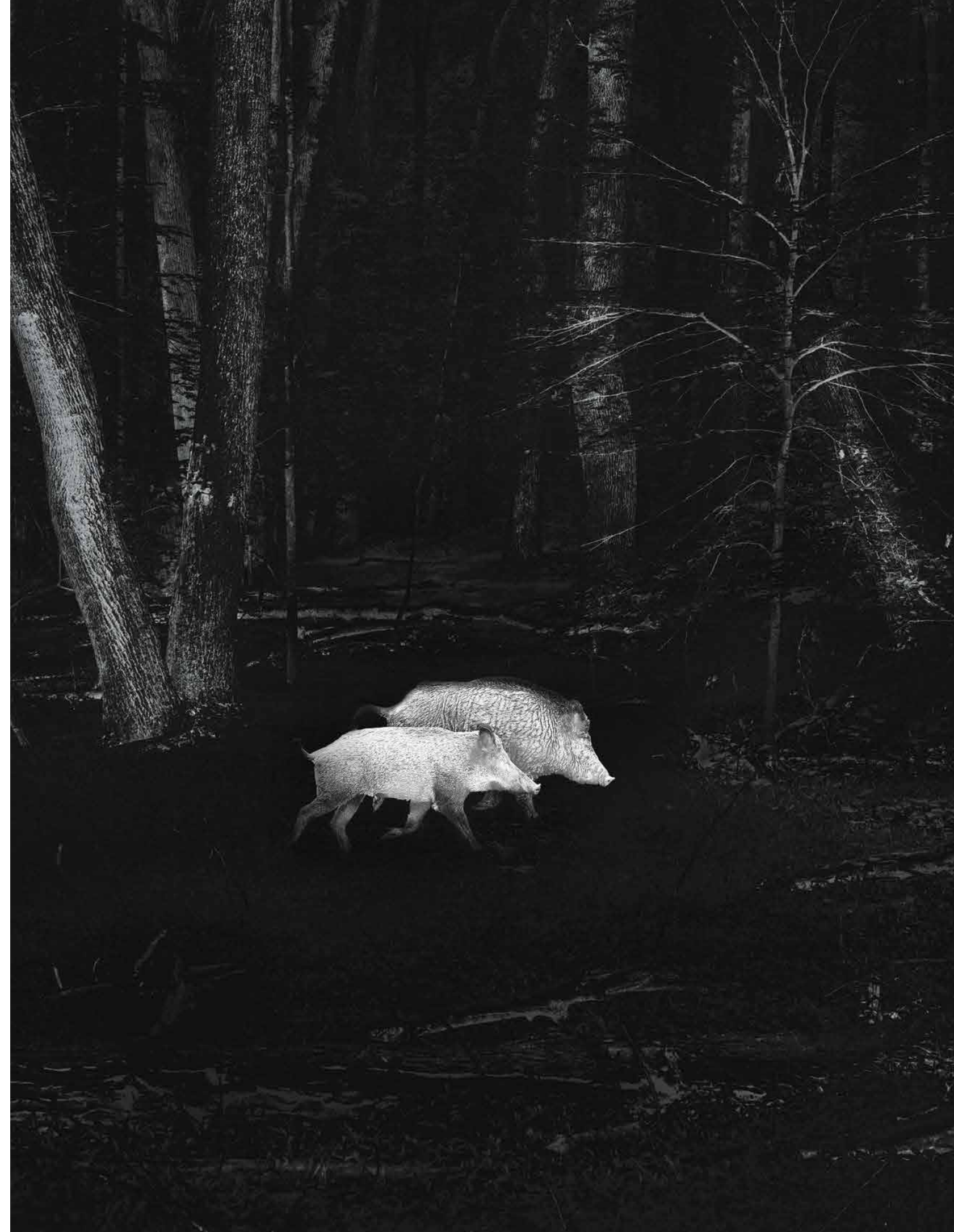
DETECT.
DECIDE.
HUNT.



SWAROVSKI
OPTIK

EYES FOR THE NIGHT

HUNTING AFTER DARK PLACES PARTICULARLY
HIGH DEMANDS ON SKILLS AND EQUIPMENT.



A

t night, you need to be even more alert to signals from nature. This makes hunting in the dark a particularly intense experience.

Nature reveals its special magic after dark. When it seems like everything is asleep and you're all alone in nature, that's when you need to be particularly alert. Changing conditions, such as increasing instances of game damage and illnesses, mean that hunting now more frequently needs to continue late into the night.

I hear a rustling sound nearby. Cautiously, I make my way toward the suspicious noise. – Wait a minute, what was that? I hear sounds of satisfied lip smacking and grunting. My heart starts to beat faster, my pulse rises. A glance through the hand-held thermal imaging device reveals the source: less than 50 meters (55 yards) away, below an old oak tree at the edge of the forest, a herd of wild boar are happily munching on the fruit of the majestic tree. I tensely hold my breath. Adrenaline surges through my body. I creep closer. Countless thoughts race through my head. I need to make sure I keep any noise to an absolute minimum to avoid scaring off the wild boar. After all, I don't want to miss this opportunity.

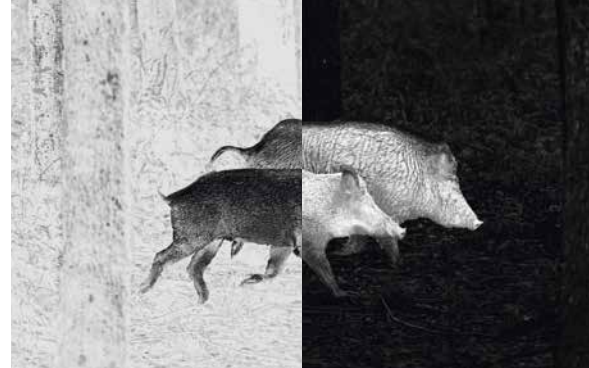
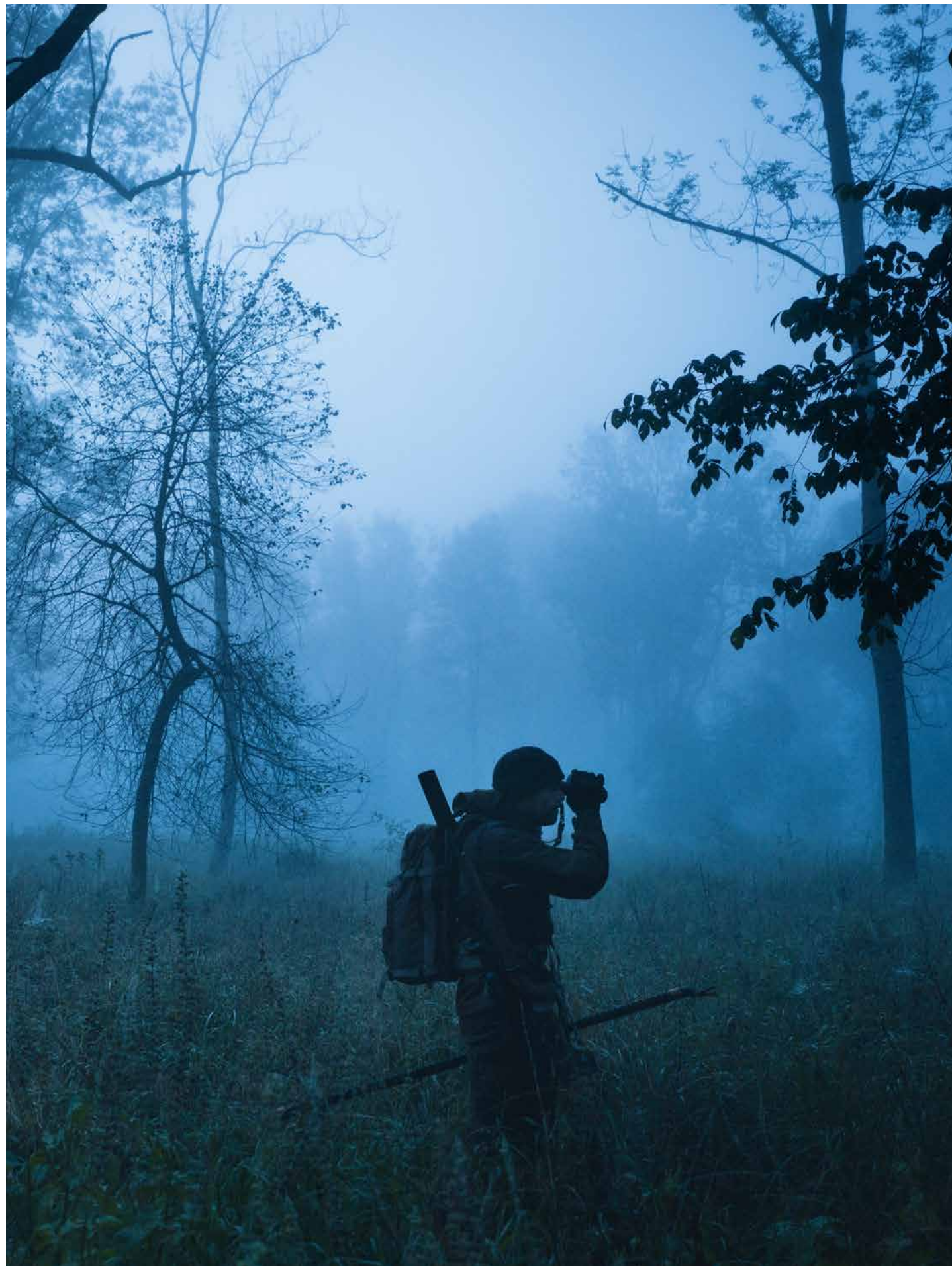
Even for seasoned hunters, hunting in the dark is a very special experience. In moments like these, it's good to know exactly what you can rely on: your own skills – and hunting equipment which offers the maximum safety possible. Modern thermal imaging technologies allow responsible hunting at night. They help you to make a precise assessment of the hunting situation and to make the right decision at the crucial moment.

And because many SWAROVSKI OPTIK employees are hunters themselves, the company knows exactly what they need and has responded by creating the tM 35 thermal imaging device. With this product, the traditional family business has made respectful observation and safe assessment of situations possible both day and night, even in adverse weather.

For fascinating stories and insights into thermal imaging, visit our hunting blog at [swarovskioptik.com](https://www.swarovskioptik.com)



**“EVEN FOR
EXPERIENCED HUNTERS,
HUNTING IN THE
DARK IS NEVER
SIMPLY ROUTINE.”**



DETECT. DECIDE. HUNT.

FROM DETECTING TO OBSERVING, APPROACHING,
AND SHOOTING: THE tM 35 IS PERFECT FOR
HUNTING IN LATE TWILIGHT AND INTO THE NIGHT.



Easy operation of equipment takes on even greater significance in darkness and adverse weather conditions. The tM 35 impresses with extremely intuitive handling. Simply press the button to activate the device for the entire hunting session. The fewer operations you need to perform in the dark, the greater your chances of hunting success.

This avoids unnecessary, irritating distractions, leaving you free to focus entirely on the essentials. The intelligent SWAROUGHT automatic switch-on/off timer allows you to activate the thermal imaging device silently from sleep mode with no unnecessary movements.

Adjustment of the brightness on the display to the prevailing light conditions is also automatic. All these features reduce your movements in the dark to a minimum.

When out stalking, the tM 35 allows you to detect game even at long distances. You can then take all the necessary precautions as early as possible and make the right decisions. You can start straight away, by using the tM 35 to scour the terrain on your way to the raised hide in the morning. After all, it's still dark and there is always the risk of unintentionally scaring the game off. Even in open space when there is already sufficient light for a shot, it allows you to observe animals moving in the terrain. This saves time and allows for a safe approach.

The tM 35 is not just a valuable companion in twilight and darkness. Animals can often be overlooked when stalking in daylight. The thermal imaging device helps you to detect the game.

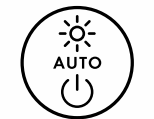
As a thermal imaging clip-on device with 1x magnification, it impresses with its absolute long-range accuracy. Its quick and simple activation ensures you are ready to take an expert shot at any time. The upward facing battery compartment allows straightforward placement on the rifle scope in darkness. Another advantage: the tM 35 and your SWAROVSKI OPTIK rifle scope form one reliable, complete system that requires no sighting in.



100%
RELIABLE POINT
OF IMPACT



FLEXIBLE USE



EASY TO USE

OWN THE NIGHT

With the tM 35, hunters can count on proven SWAROVSKI OPTIK quality. A thermal imaging observation and clip-on device with modern thermal imaging technology in one, for impressive enhanced vision and responsible hunting at dark.

ON TARGET

Together with SWAROVSKI OPTIK rifle scopes, the tM 35 offers a powerful combination for 100% reliable point of impact. Make the right decision, take the perfect shot.

EASY TO USE

Key benefit at night: automatic switching on and off thanks to tilt sensors and intelligent brightness adjustment mean that once activated, the tM 35 is immediately ready for use at any time.





WITH
DARKNESS
COMES

RESPONSIBILITY



THERMAL IMAGING EQUIPMENT EXTRACTS CRUCIAL DETAILS FROM THE NIGHT. IT GIVES YOU THE ASSURANCE OF MAKING THE RIGHT DECISIONS IN THE DARK AND IN POOR LIGHT CONDITIONS. HOWEVER, IT DOES NOT REPLACE EXPERIENCE AND SKILL.

Modern thermal imaging technology is now enabling us to track down, observe, and expertly hunt game even in the dark. These technical possibilities allow for enhanced hunting ethics.

LEAVE ANIMALS IN PEACE

The increasing legal permissibility means we are no longer dependent on the moon. Hunting is now possible practically around the clock. This naturally has consequences for wildlife. The result can be a situation of constant pressure. Thermal imaging devices allow you to detect and observe game even at long distances without disturbing them. Thermal imaging technology allows you to hunt more effectively – which in turn gives the animals sufficient opportunities to withdraw and rest.

COMPLY WITH LAWS

In response to increasing instances of game damage and the outbreak of African swine fever, more and more countries are now permitting the use of thermal imaging technology. Rules as to what is and isn't allowed can vary from region to region. You should therefore always check the applicable legal restrictions in detail. What type of

device is permitted for this kind of hunting? Is ownership of the device actually allowed? Are there any differences in use in relation to the game? And what are the legal shooting times? Beyond legal possibilities, always consider the needs of the animals and ethical hunting.

KNOW YOUR FIREARM

Success depends on your ability to handle stress, and not just in darkness. If you have mastered the tools of your trade, you can avoid mistakes resulting from stressful situations. This includes choosing a firearm you know inside and out. Train with it during daylight hours. Close your eyes and practice. It might sound a bit strange, but it is a great way to learn.

REDUCE SEARCH TIMES

There's no question, darkness makes it even harder to maintain an overview of your surroundings. If you're not entirely sure which direction the animal has run off in or whether it is in your line of fire, thermal imaging technology can help you reliably detect it. The animal's body will still be clearly detectable for a long time. This feature will be useful during the day as well as in twilight and darkness. 📡



SUCCESS IN THE NIGHT

AS A PASSIONATE HUNTER, **WOLFGANG SCHWARZ**, A PRODUCT MANAGER AT SWAROVSKI OPTIK, KNOWS ALL THE FACTORS YOU NEED TO CONSIDER WHEN CHOOSING YOUR THERMAL IMAGING DEVICE.

1 CHECK THE LOCAL LAWS!

The tM 35 is a hand-held thermal imaging device that can be converted to a clip-on device using an adapter. Please observe the legal requirements in the country of use. Contact your hunting association for precise information.



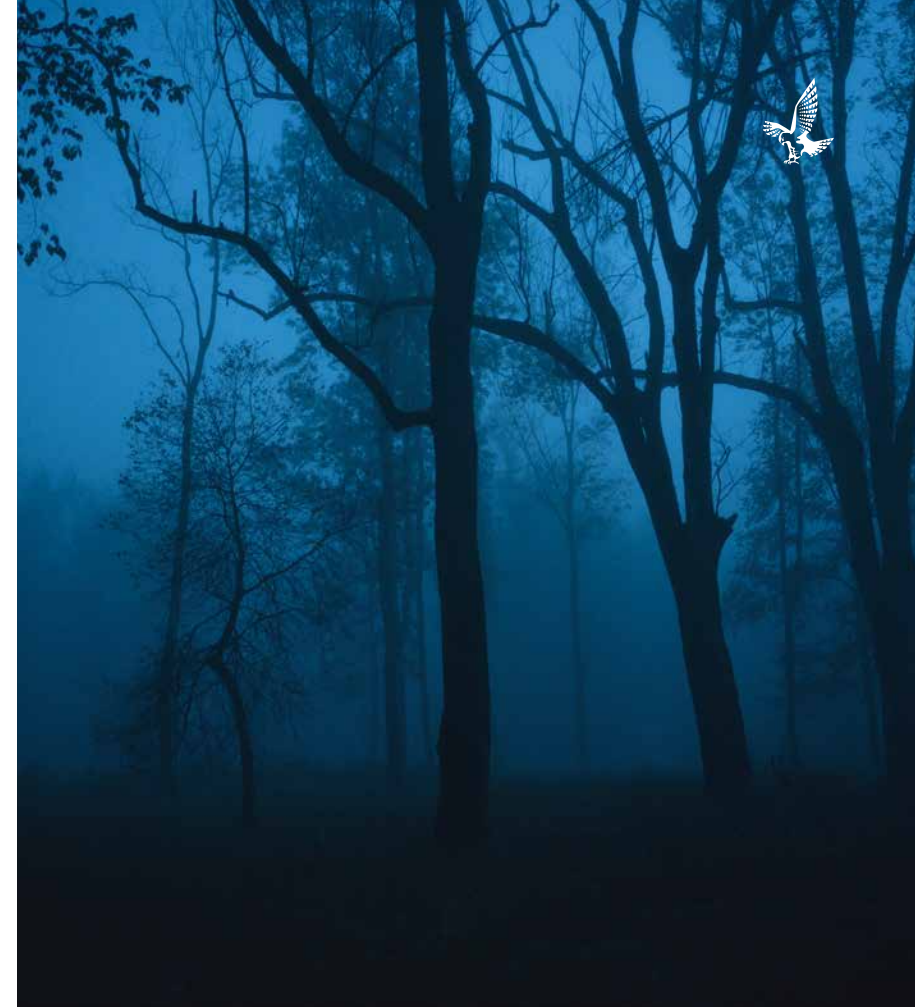
2 CONSIDER THE TYPE OF APPLICATION:

- Do you plan to use the device only for observing and detecting?
- Will you be using it only in the hide or would you like to use it for stalking too?
- How far do you want to shoot?
- Which is more likely: will you be shooting in daylight or twilight?

3

IT IS A GOOD IDEA TO CHECK OUT YOUR EXISTING EQUIPMENT:

- Can the thermal imaging clip-on device be used with your existing firearm-rifle scope combination (open sight, barrel/rifle scope distance, silencer)?
- Are you planning to purchase a rifle scope as well? To increase the all-round usability of your firearm, opt for a combination of the tM 35 and a rifle scope with a 42-mm objective lens diameter and a correspondingly large field of view.
- Do you intend to put together a firearm for use exclusively at night that won't be used to shoot during the day?



4

IF YOU WANT TO COVER THE WIDEST POSSIBLE FIELD OF APPLICATION:

The tM 35 is a safe bet. Together with a SWAROVSKI OPTIK Z8i 1.7-13.3x42 P or Z8i 2-16x50 P, there is practically no situation you won't be able to tackle. This combination offers a complete system that is ready to use at all times.



PERFECTLY
EQUIPPED FOR
THE DARKNESS



tM 35		
Mode	Clip-on (1x35)	Hand-held (4x35)
Optical magnification	1x	
Digital magnification		4x*
Eye relief (mm)		21
Field of view (m/100 m/ft/100 yds)	10.9 x 8.7 / 32.7 x 26.2	
Field of view for eyeglass wearers (%)		100
Refresh rate (Hz)	60	
Screen type	AMOLED	
Screen resolution (pixels)	2560 x 2048	
Sensor type	Uncooled VOx microbolometer	
Sensor resolution (pixels)	320 x 256	
Pixel size (µm)	12	
Objective lens	35 mm/f1.1	
Approx. LxWxH (mm/in)	170/54/80 / 7/2/3	
Approx. weight including battery (g/oz)	495 /18.0	
Connection thread	M44x0.75	
Battery (mAh)	Li-ion 3000	
Battery operating time (hrs)	7	
Operating duration (s)	2	
Supplied with:	RB tM 35 rechargeable battery, RBC charger, micro-USB charging cable, field bag, winged eyecup, eyepiece cover, carrying strap, and hand strap	

Functional temperature: -15°C/+50°C (+5°F/+122°F) · Storage temperature: -30°C/+70°C (-22°F/+158°F) · IP protection class: IP68

ACCESSORIES

tMA thermal monocular adapter
for tM 35 in the sizes tMA-24**,
tMA-36, tMA-42, tMA-44,
tMA-50, tMA-52, tMA-56



RB tM 35 rechargeable battery



Do you have any specific
questions about this and other
SWAROVSKI OPTIK products?
Our Customer Service
will be happy to help.

00800 3242 5056
Mon-Thu 8 am-5 pm, Fri 8 am-12 pm
customerservice@swarovskioptik.com
info@swarovskioptik.us

BRIGHTNESS
EVEN IN
THE DARK

THANKS TO SWAROVSKI OPTIK,
YOU ARE IDEALLY EQUIPPED FOR
DARKNESS AND ADVERSE WEATHER.
THESE HIGH-QUALITY LONG-
RANGE OPTICS IMPRESS WITH THEIR
PERFORMANCE IN TWILIGHT AND
ARE THE PERFECT COMPLEMENT
TO THE TM 35.

SLC
8/10x56



EL
10/12x50



X5i
5-25x56 P/MOA/MRAD



Z6i
2.5-15x56 P



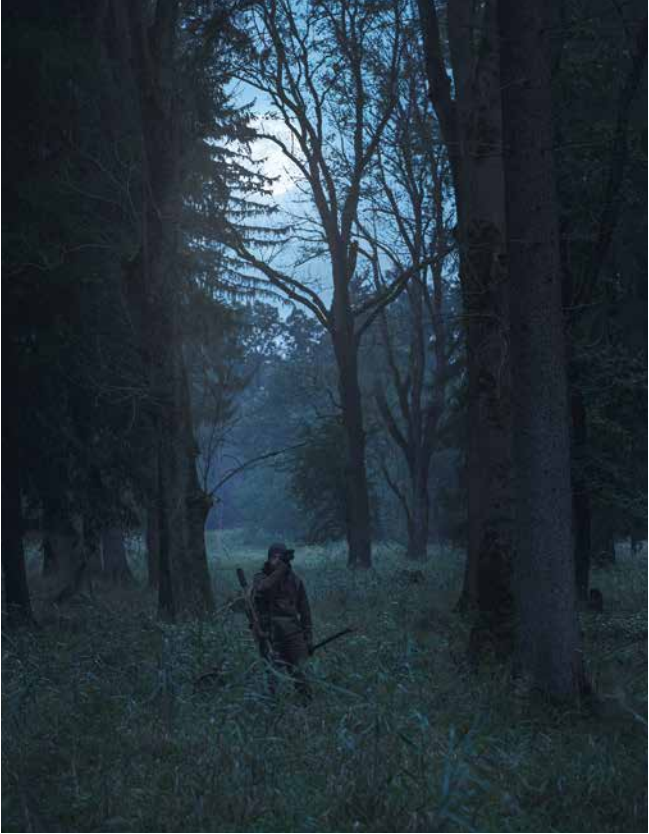
Z8i
2.3-18x56 P



* Comment for the USA/Canada: only 1x magnification ** Exception: tMA 24 not valid for 0.75-6x20 SR



“WHEN
EVERYTHING
APPEARS TO
BE ASLEEP, YOU
NEED TO BE
PARTICULARLY
ALERT.”



YOU CAN FIND OUR PRODUCTS AT EXCLUSIVE SPECIALIST
RETAILERS AND ONLINE AT **SWAROVSKIOPTIK.COM**

For further information please contact:

EN 10/2021 We reserve the right to make changes regarding
design and delivery. We accept no liability for printing errors.
All image rights owned by SWAROVSKI OPTIK.

SEE *THE* UNSEEN

