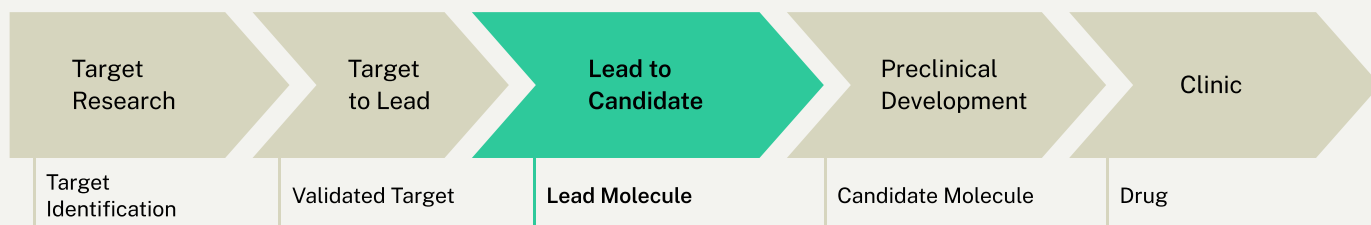
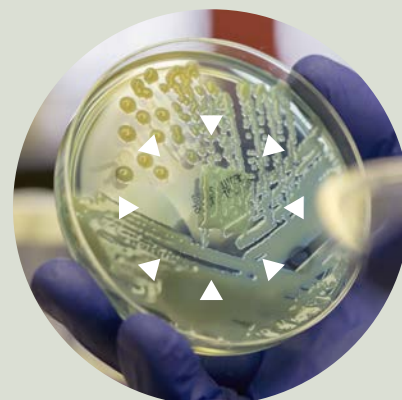


How the Dotmatics Biology Enterprise Solution Supports Drug Discovery

The Dotmatics Biology Solution provides end-to-end data management and analysis capabilities that fit into your established research and development workflow.

It is used to support drug discovery, from target research to assay development to lead discovery and optimization.



The Enterprise Solution is a package of capabilities that support drug discovery across a wide range of biologic therapeutic areas, including RNA therapies, CAR-T, gene therapies, peptides, and more. It brings the ability to capture experiment workflow and data in a “paper on glass” ELN format.

The Enterprise Solution includes cloning tools, protein production and expression capabilities, biological registration, assay data management, and inventory support.

The Solution further integrates with best of breed applications like Geneious Prime, GraphPad Prism, SnapGene, and Geneious Biologics to streamline workflows and enable users to easily access, collaborate, visualize, and analyze their structured data.

[See it in action on the next page →](#)

Cloning your Biologic

Design vectors and plan cloning experiments in SnapGene or Geneious Prime, which keep track of specific data sets in an electronic laboratory notebook (ELN). Vector designs are associated with experimental results, so you'll always know how you got the results and what's in the tube.

Protein Production

Design everything from constructs, expression systems and conditions, purification protocols and batches, which are tracked in your ELN so your team can find all workflow elements quickly and efficiently.

Biologics Registration

Register your materials from the ELN, scientific software like SnapGene and Geneious Prime, or directly in the registration system to keep track the location of samples in inventory. This saves time and reduces repeated work by tracking what you've already made.

Assay Development

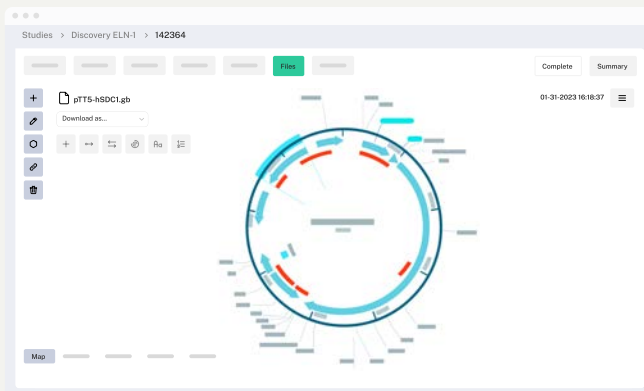
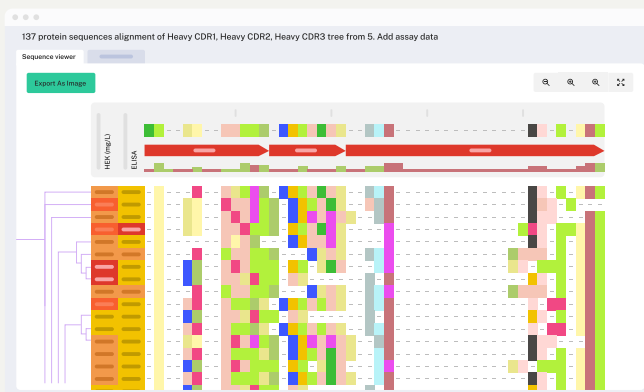
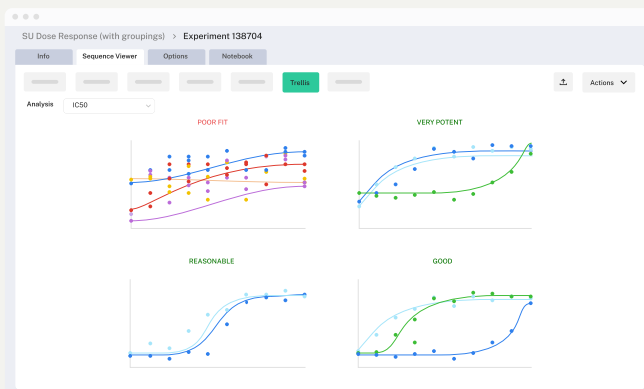
Capture assay parameters and other experimental details in the ELN and store the Prism files used for analysis directly in the experiment. By keeping the experimental details and the data analyses together, you'll have an easier time finding information on past experiments. This also decreases the cost and risk of repeated experiments due to poor data management.

Screening Tools

Streamline assay data analysis, standardize for high-throughput assays, and ensure all assay data is available to everyone on your team. Ease of access to the data enables scientists to spend less time on data analysis and more time in the lab.

Results Analysis

Make decisions using ALL your data streams, not just one. Search all your data from a single query tool, collate results from multiple assays and send the results directly to scientific tools like GraphPad Prism and Geneious Biologics.

A screenshot of an antibody information form. The form is titled 'Antibody Information' and includes a 'Download as...' button. Below this are three sections: 'ANTIBODY INFORMATION' with fields for 'Antibody ID', 'Antibody Name', and 'Experiment ID'; 'PARENT INFORMATION' with fields for 'Parent Antibody ID' and 'Parent Antibody Name'; and 'CHILD INFORMATION' with fields for 'Child Antibody ID' and 'Child Antibody Name'. A 'Y' shaped antibody icon is on the right.

Click here to learn more about the [Dotmatics Biology Solution for Drug Discovery](#) on our website.

Dotmatics