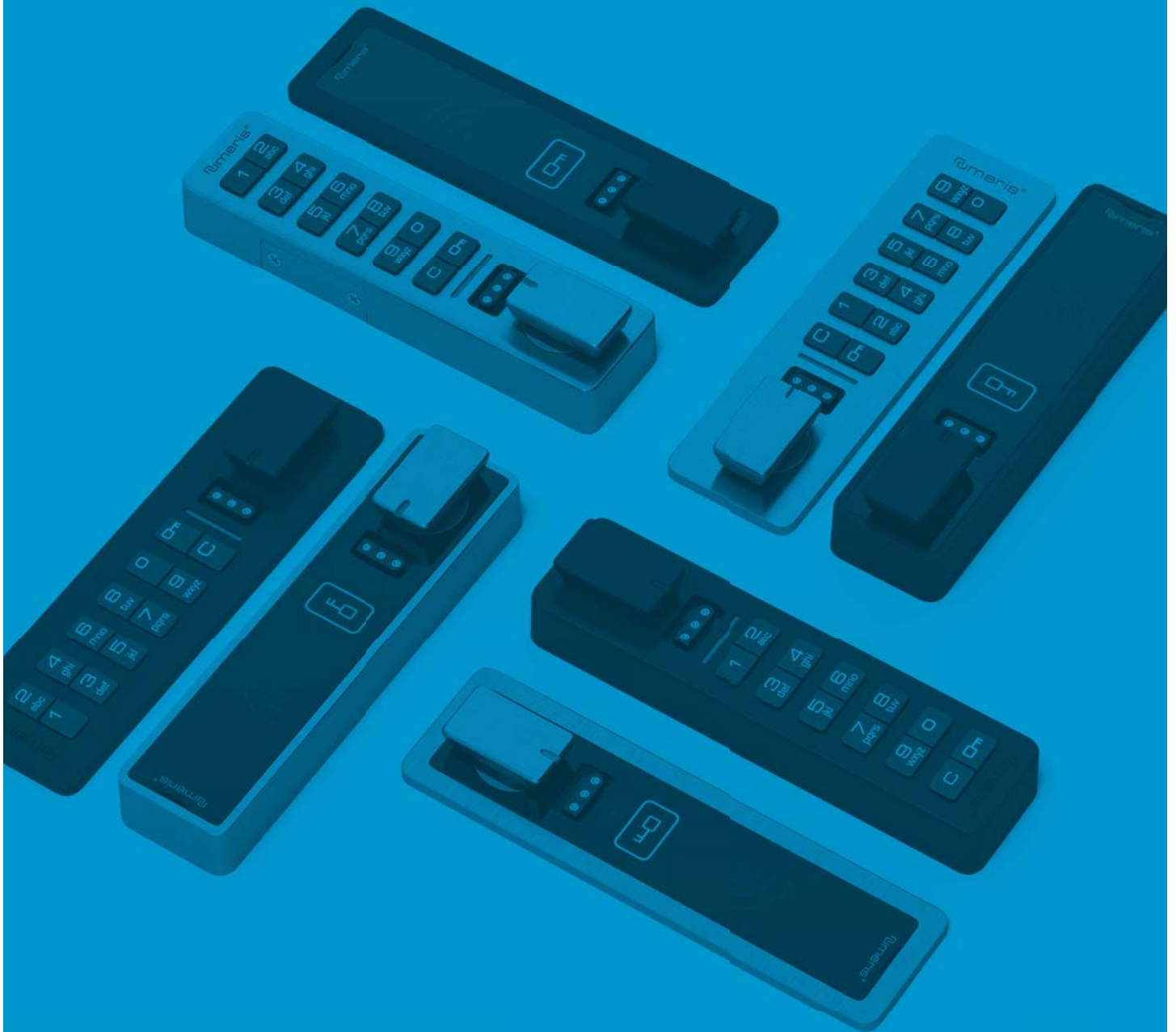


# versa<sup>®</sup>

**MINI**

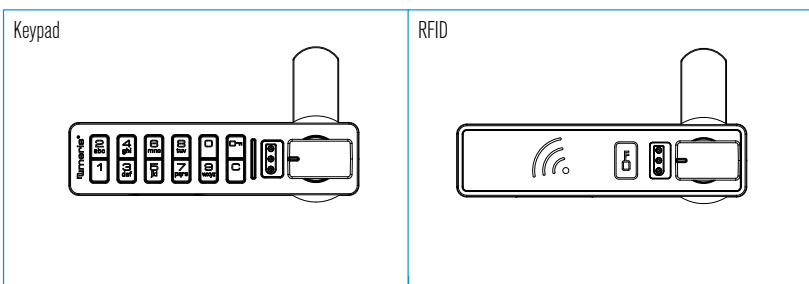
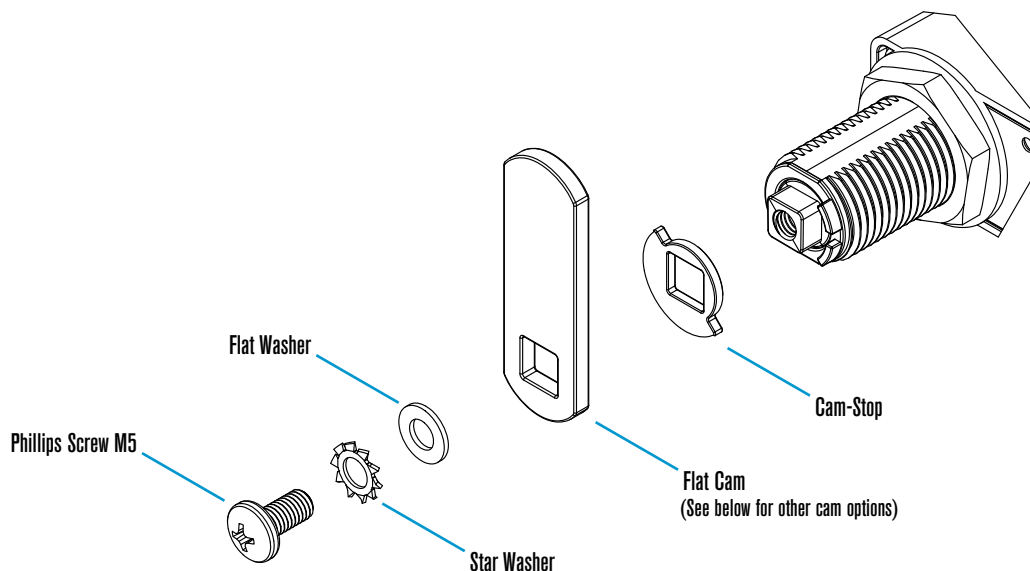
standard knob & ADA-handle



CAM  
**GUIDE**

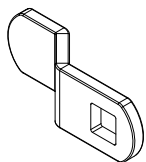
## Horizontal - Knob on the Right

Example shows Configuration 2a. See other configuration options under the knob rotation section.

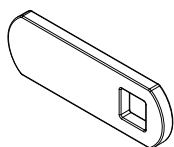


Shown in the locked position.

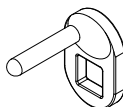
## Cam Options



Offset Cam



Flat Cam



Lifter Cam

## Cam-Stop Options

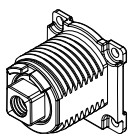


90° Cam-Stop

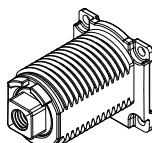


180° Cam-Stop

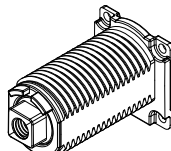
## Cylinder Length Options



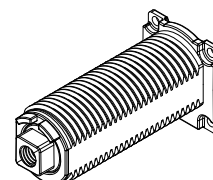
16mm



22mm



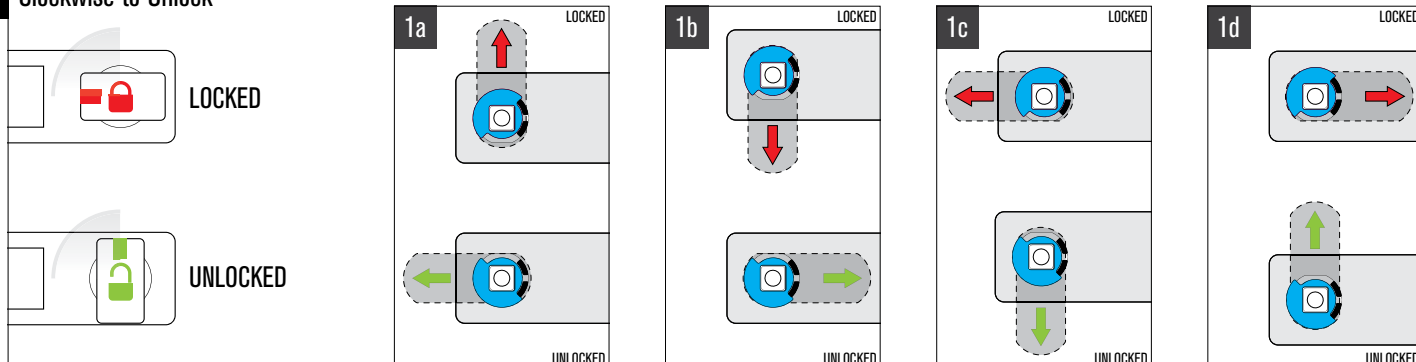
30mm (Standard)



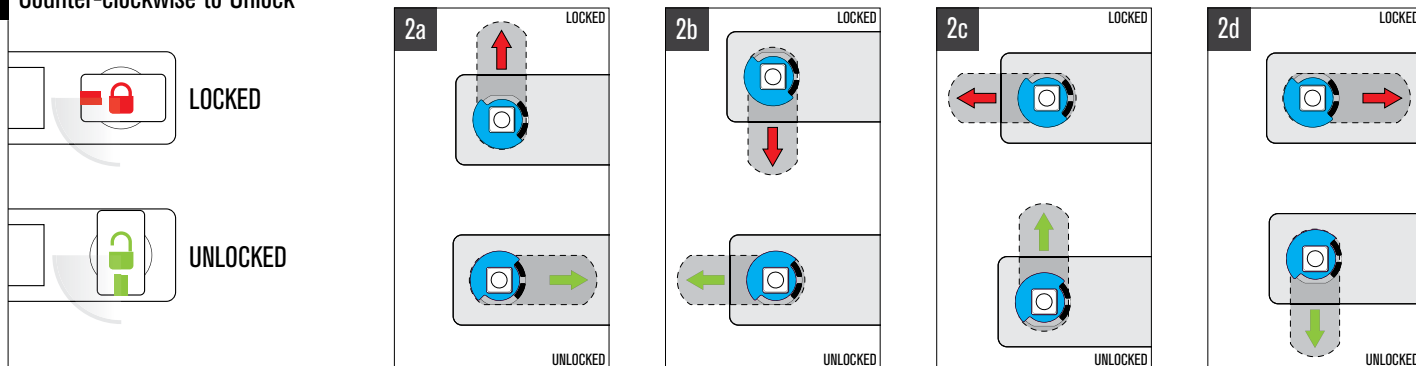
38mm

## 90° Knob Rotation

### 1 Clockwise to Unlock

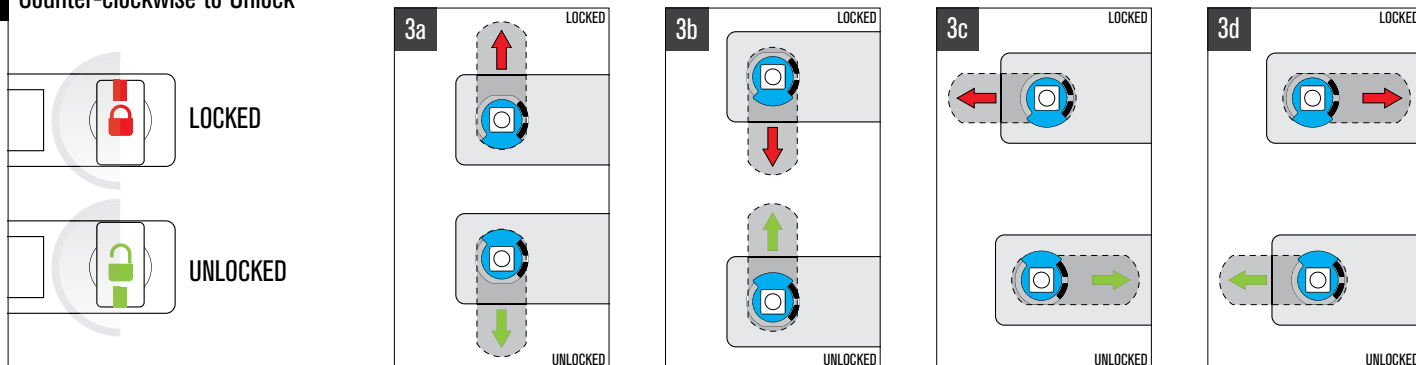


### 2 Counter-clockwise to Unlock

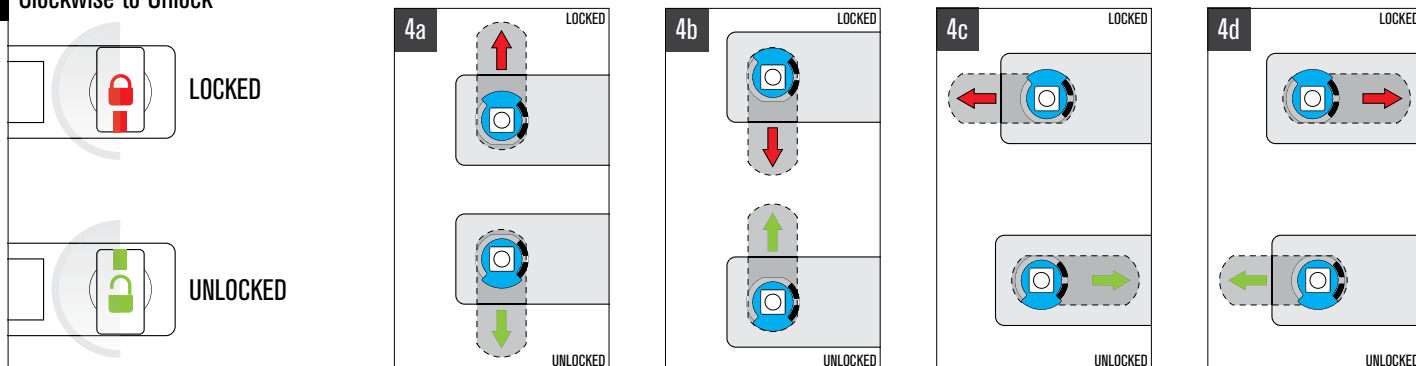


## 180° Knob Rotation

### 3 Counter-clockwise to Unlock

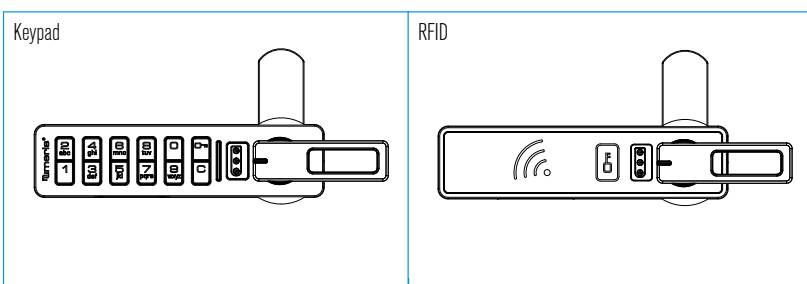
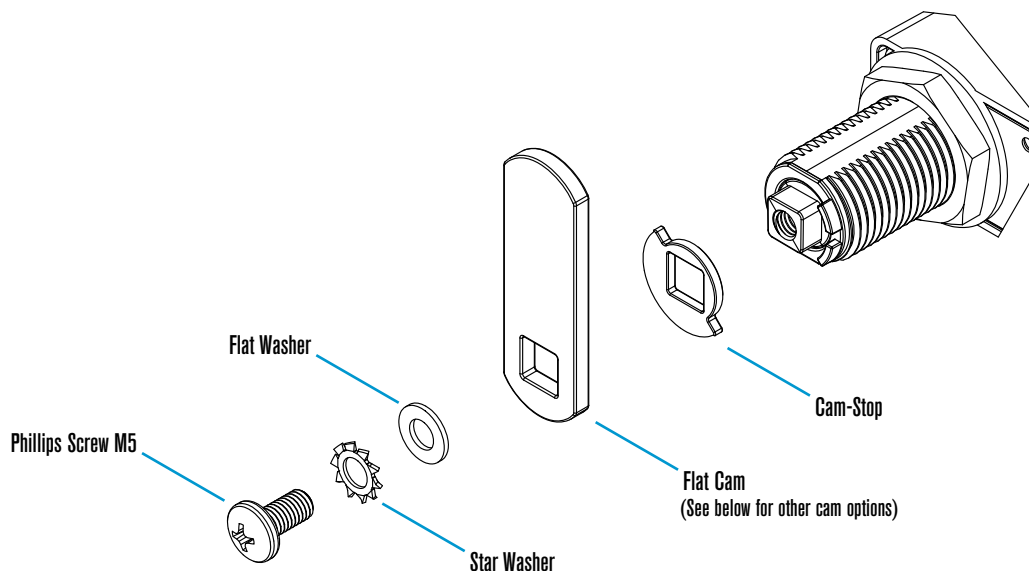


### 4 Clockwise to Unlock



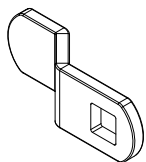
## Horizontal - ADA Handle on the Right

Example shows Configuration 2a. See other configuration options under the ADA handle rotation section.

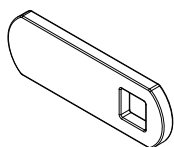


Shown in the locked position.

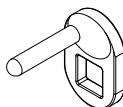
## Cam Options



Offset Cam



Flat Cam



Lifter Cam

## Cam-Stop Options

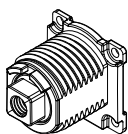


90° Cam-Stop

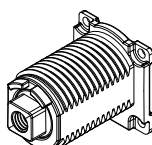


180° Cam-Stop

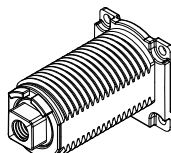
## Cylinder Length Options



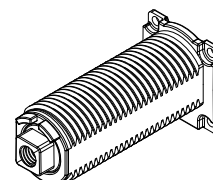
16mm



22mm



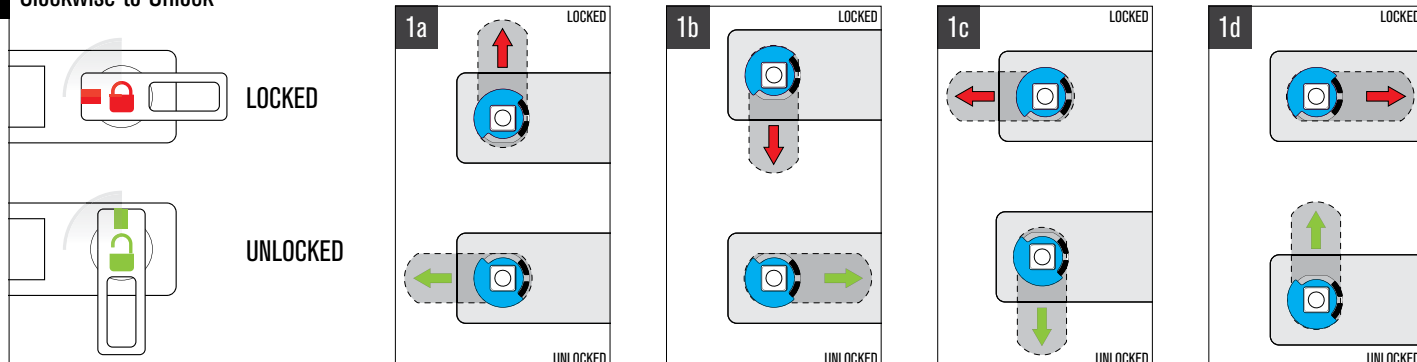
30mm (Standard)



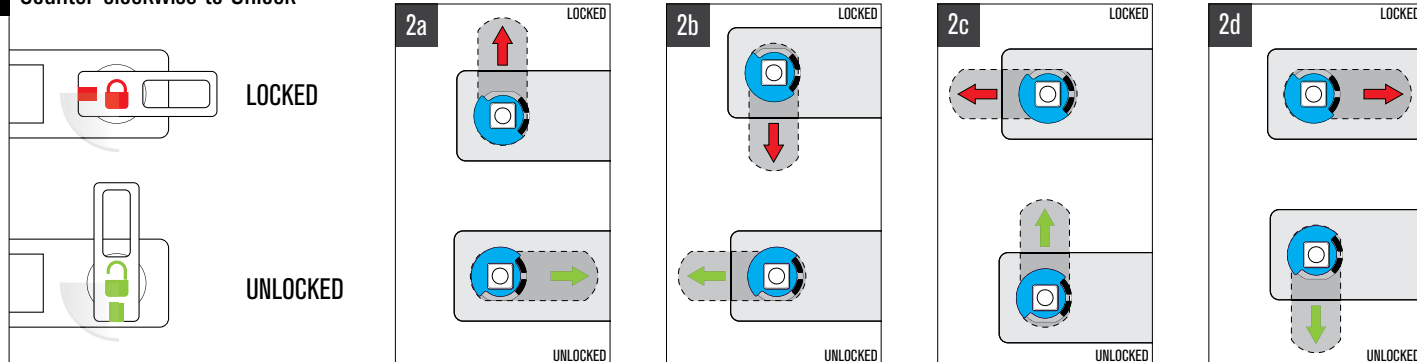
38mm

## 90° ADA Handle Rotation

### 1 Clockwise to Unlock

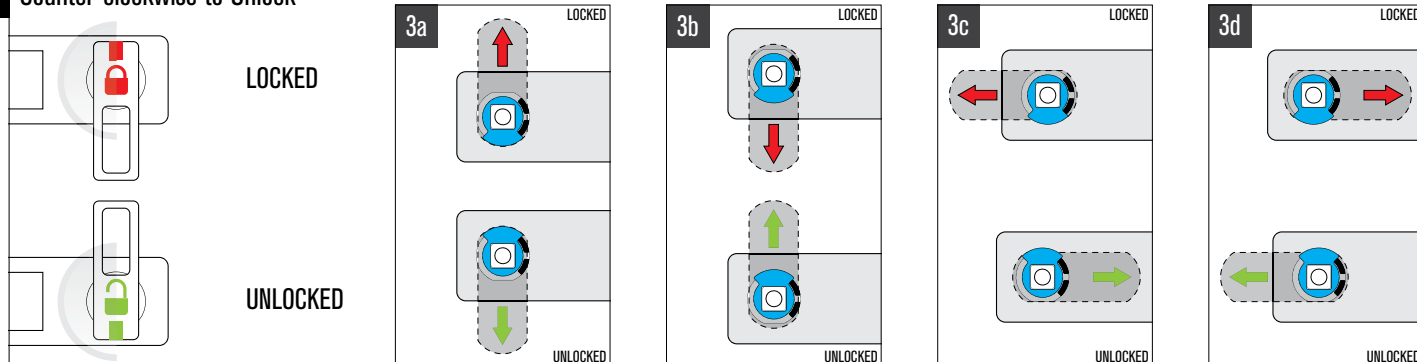


### 2 Counter-clockwise to Unlock

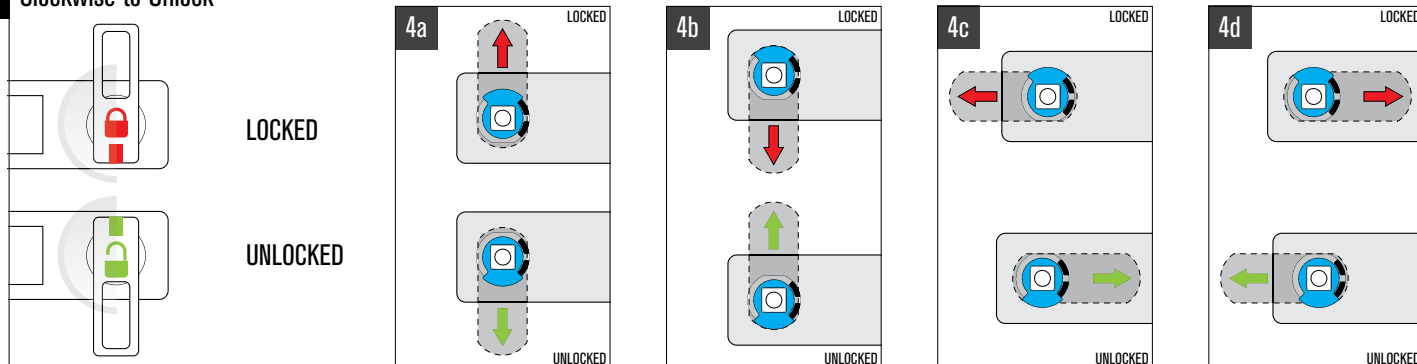


## 180° ADA Handle Rotation

### 3 Counter-clockwise to Unlock

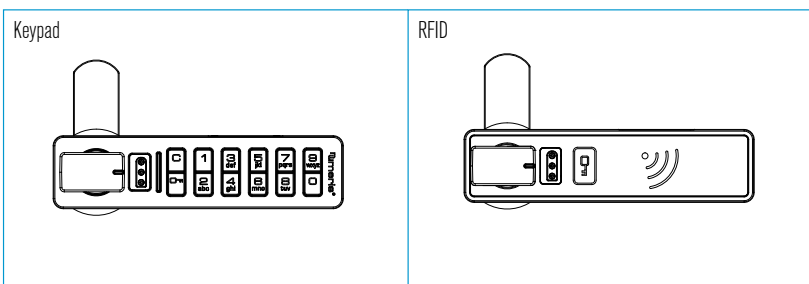
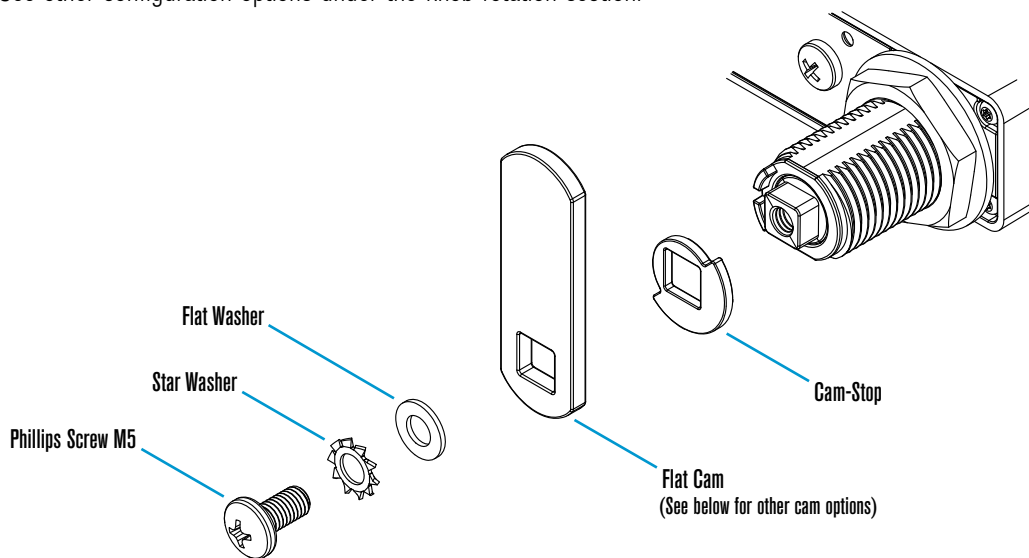


### 4 Clockwise to Unlock



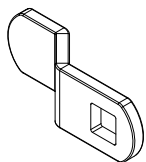
## Horizontal - Knob on the Left

Example shows Configuration 1b. See other configuration options under the knob rotation section.

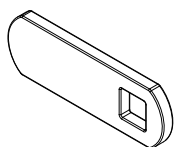


Shown in the locked position.

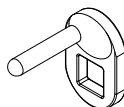
## Cam Options



Offset Cam



Flat Cam



Lifter Cam

## Cam-Stop Options

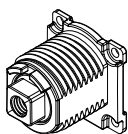


90° Cam-Stop

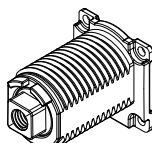


180° Cam-Stop

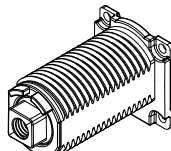
## Cylinder Length Options



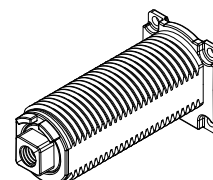
16mm



22mm



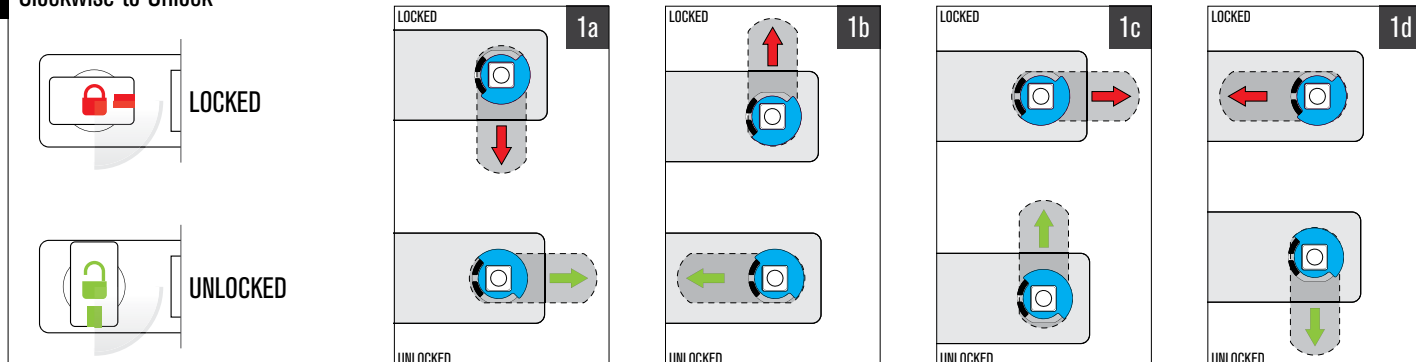
30mm (Standard)



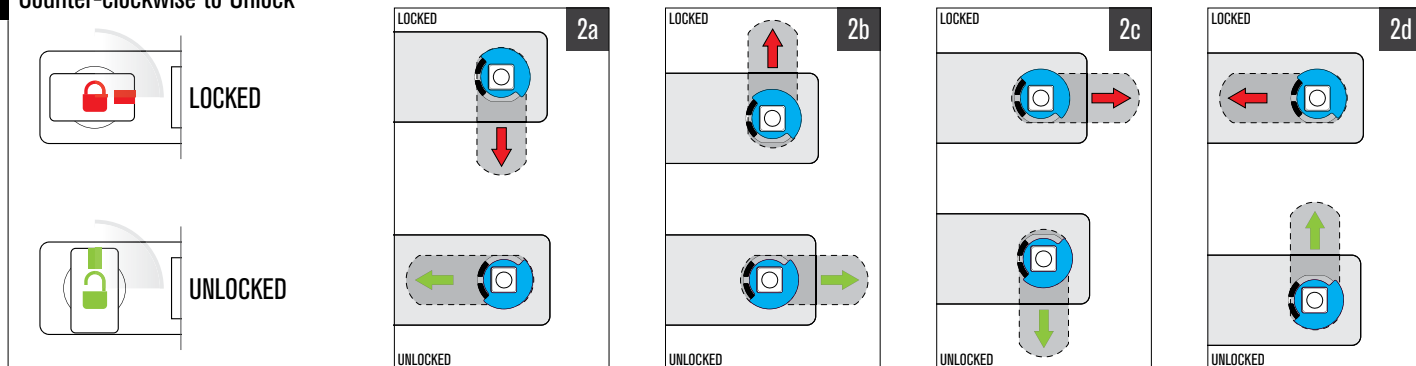
38mm

## 90° Knob Rotation

### 1 Clockwise to Unlock

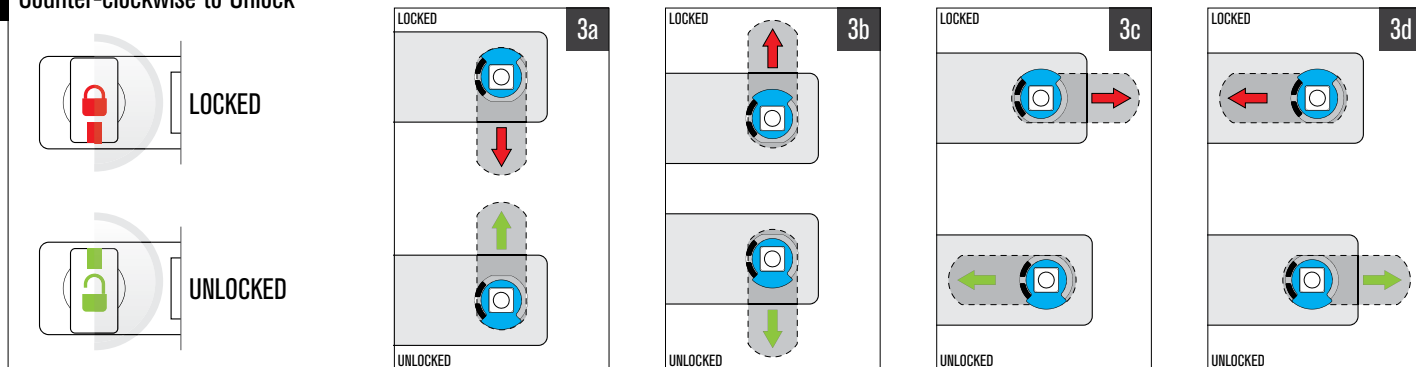


### 2 Counter-clockwise to Unlock

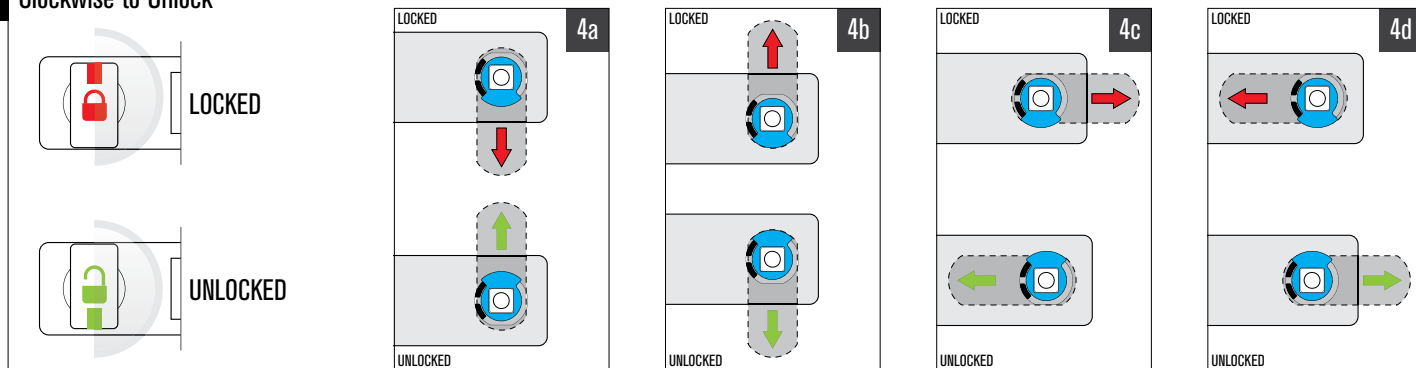


## 180° Knob Rotation

### 3 Counter-clockwise to Unlock

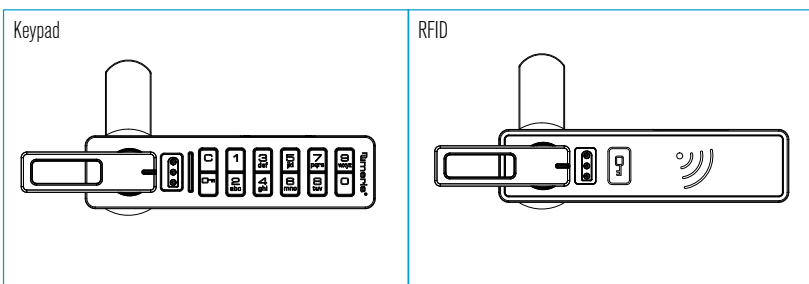
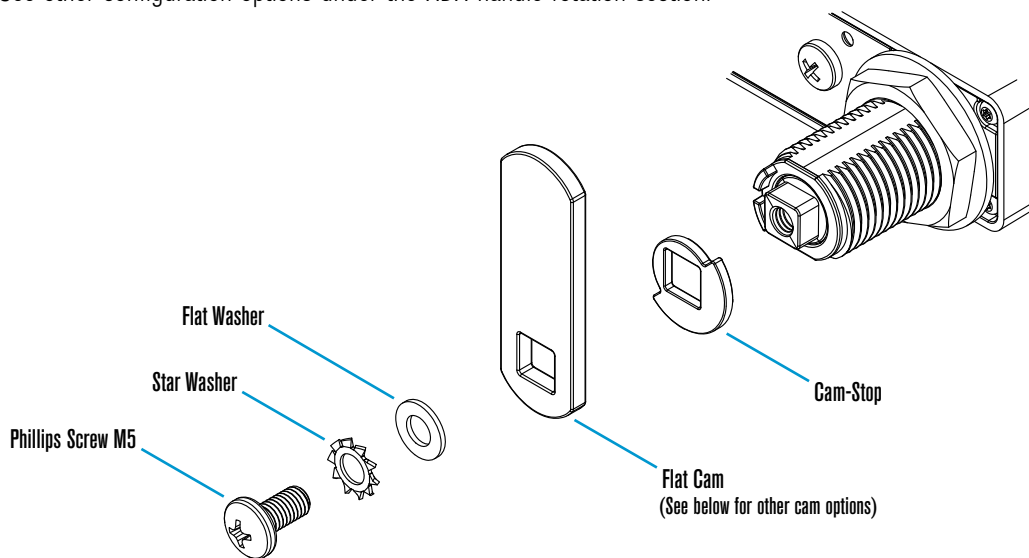


### 4 Clockwise to Unlock



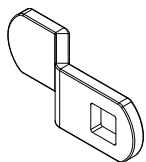
## Horizontal - ADA Handle on the Left

Example shows Configuration 1b. See other configuration options under the ADA handle rotation section.

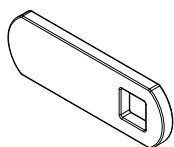


Shown in the locked position.

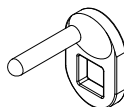
## Cam Options



Offset Cam



Flat Cam



Lifter Cam

## Cam-Stop Options

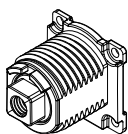


90° Cam-Stop

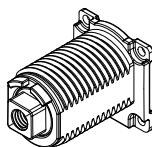


180° Cam-Stop

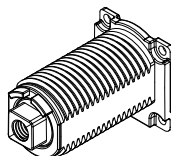
## Cylinder Length Options



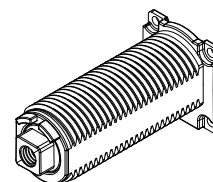
16mm



22mm



30mm (Standard)

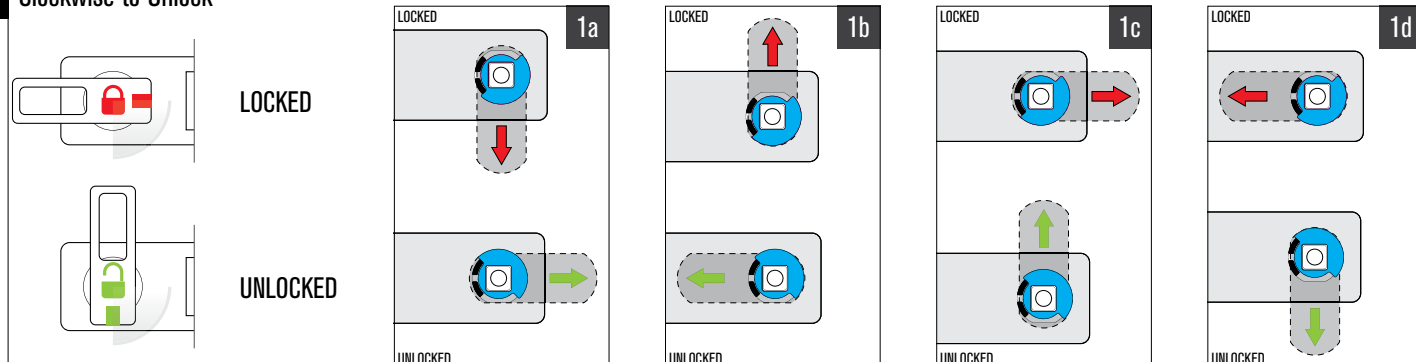


38mm

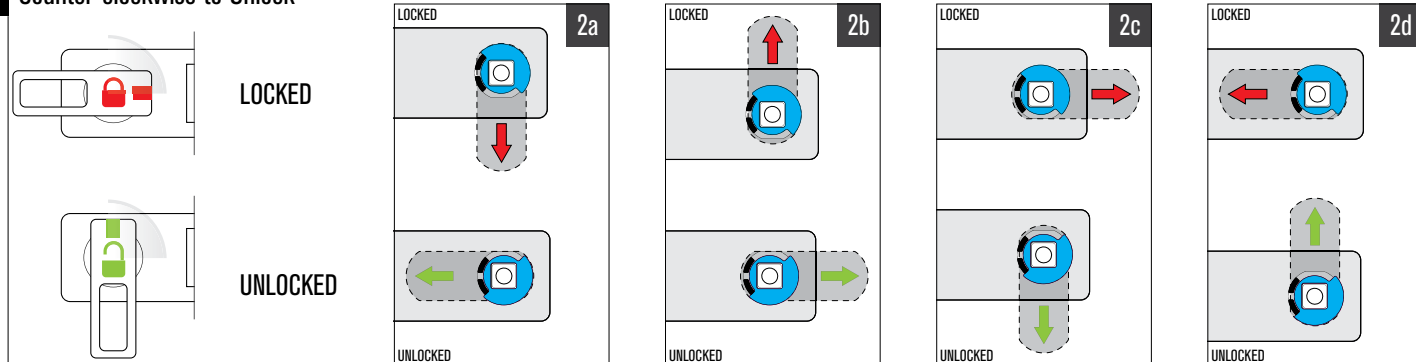


## 90° ADA Handle Rotation

### 1 Clockwise to Unlock

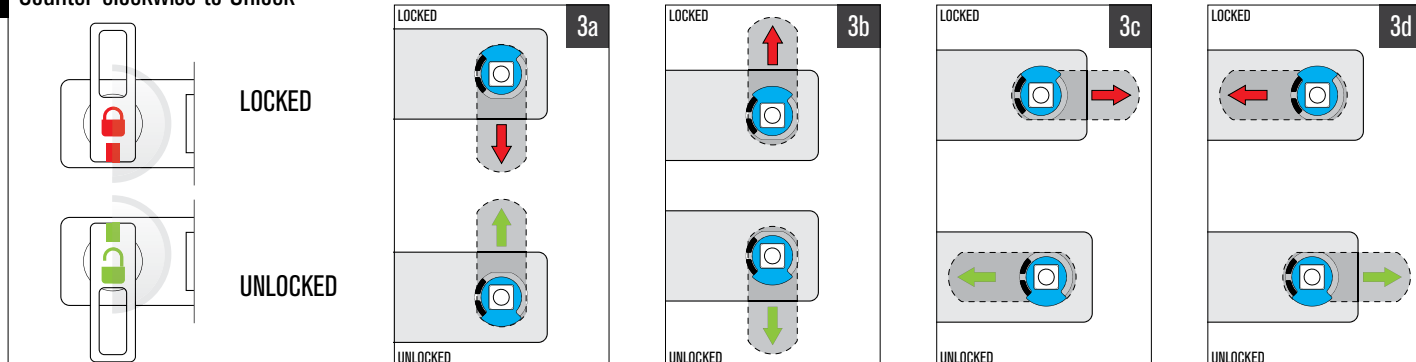


### 2 Counter-clockwise to Unlock

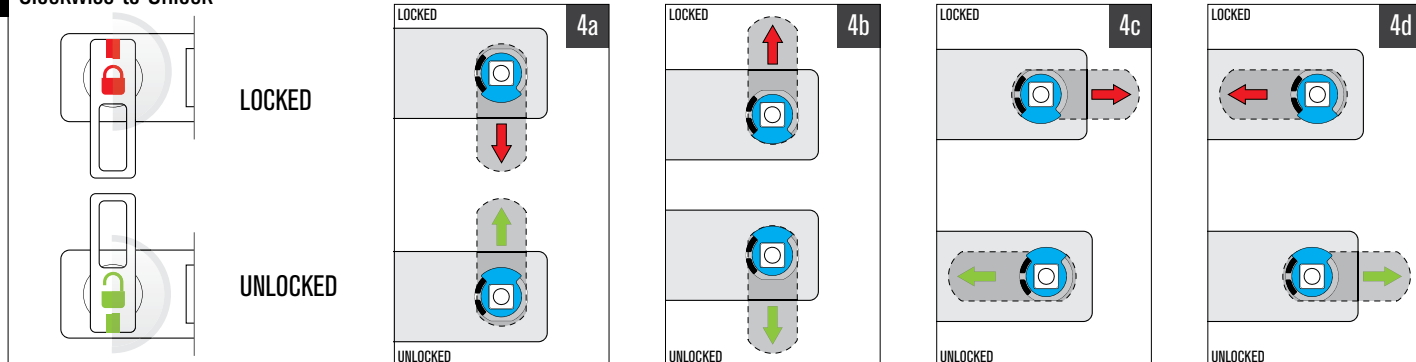


## 180° ADA Handle Rotation

### 3 Counter-clockwise to Unlock

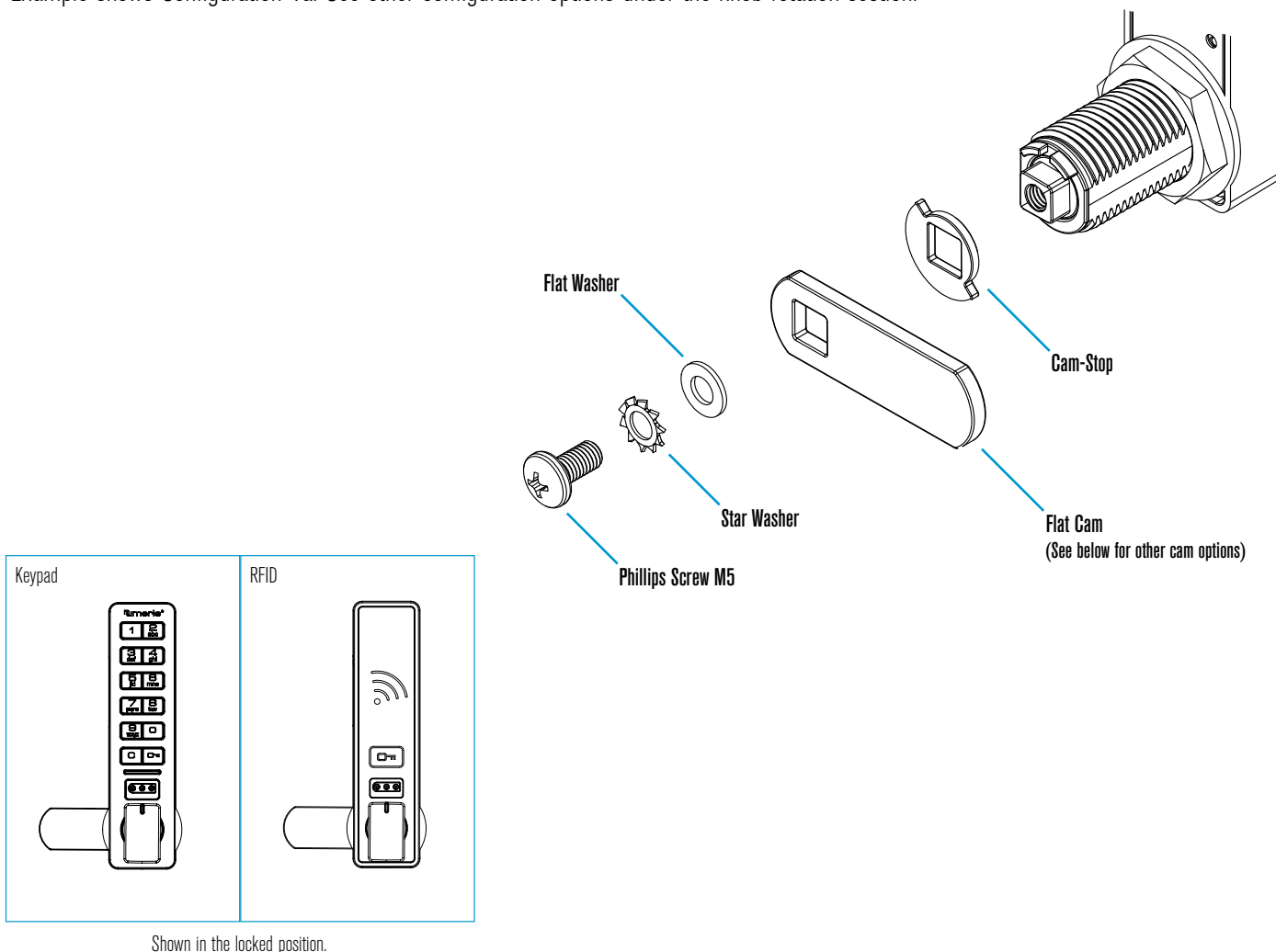


### 4 Clockwise to Unlock

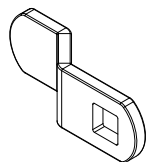


## Vertical - Knob on the Bottom

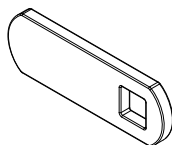
Example shows Configuration 1a. See other configuration options under the knob rotation section.



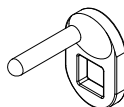
## Cam Options



Offset Cam



Flat Cam



Lifter Cam

## Cam-Stop Options

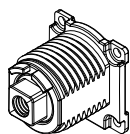


90° Cam-Stop

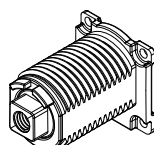


180° Cam-Stop

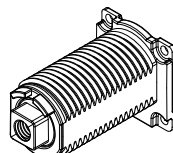
## Cylinder Length Options



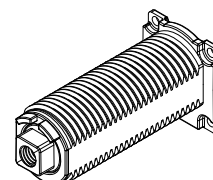
16mm



22mm



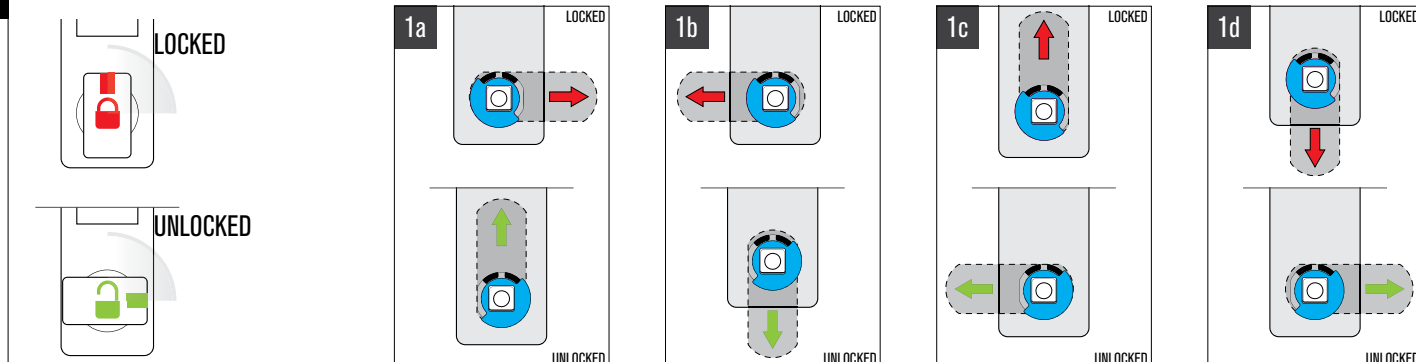
30mm (Standard)



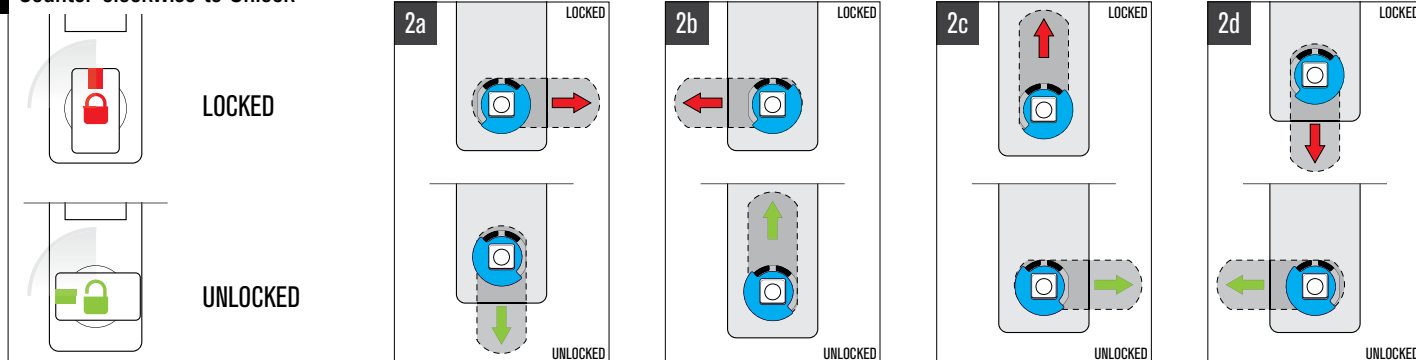
38mm

## 90° Knob Rotation

### 1 Clockwise to Unlock

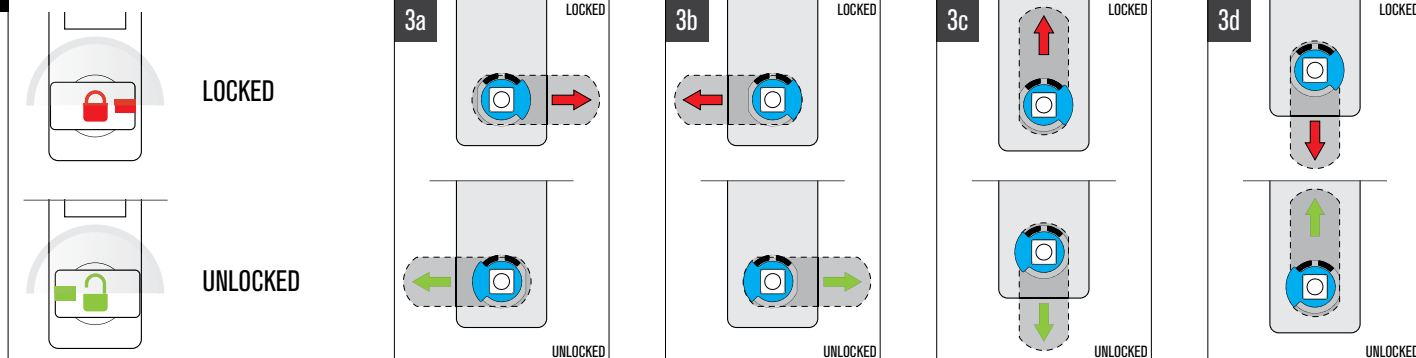


### 2 Counter-clockwise to Unlock

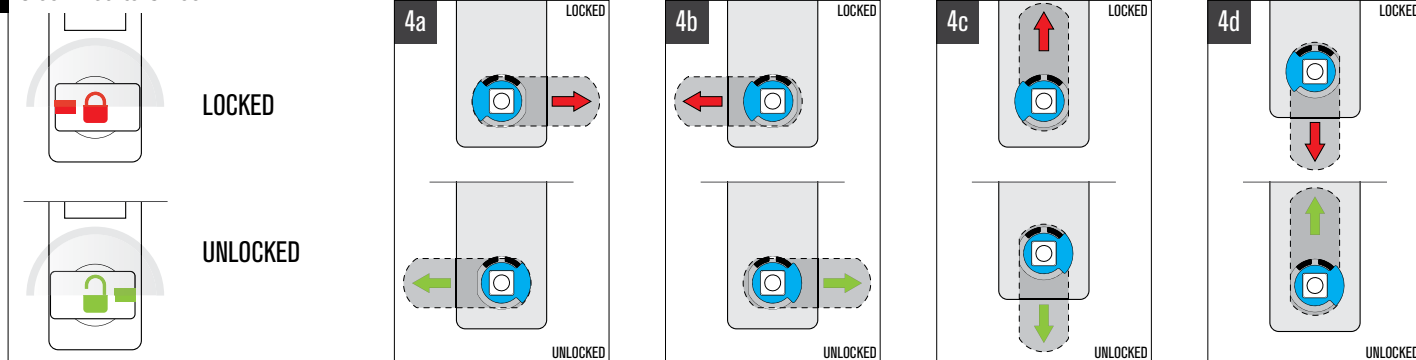


## 180° Knob Rotation

### 3 Counter-clockwise to Unlock

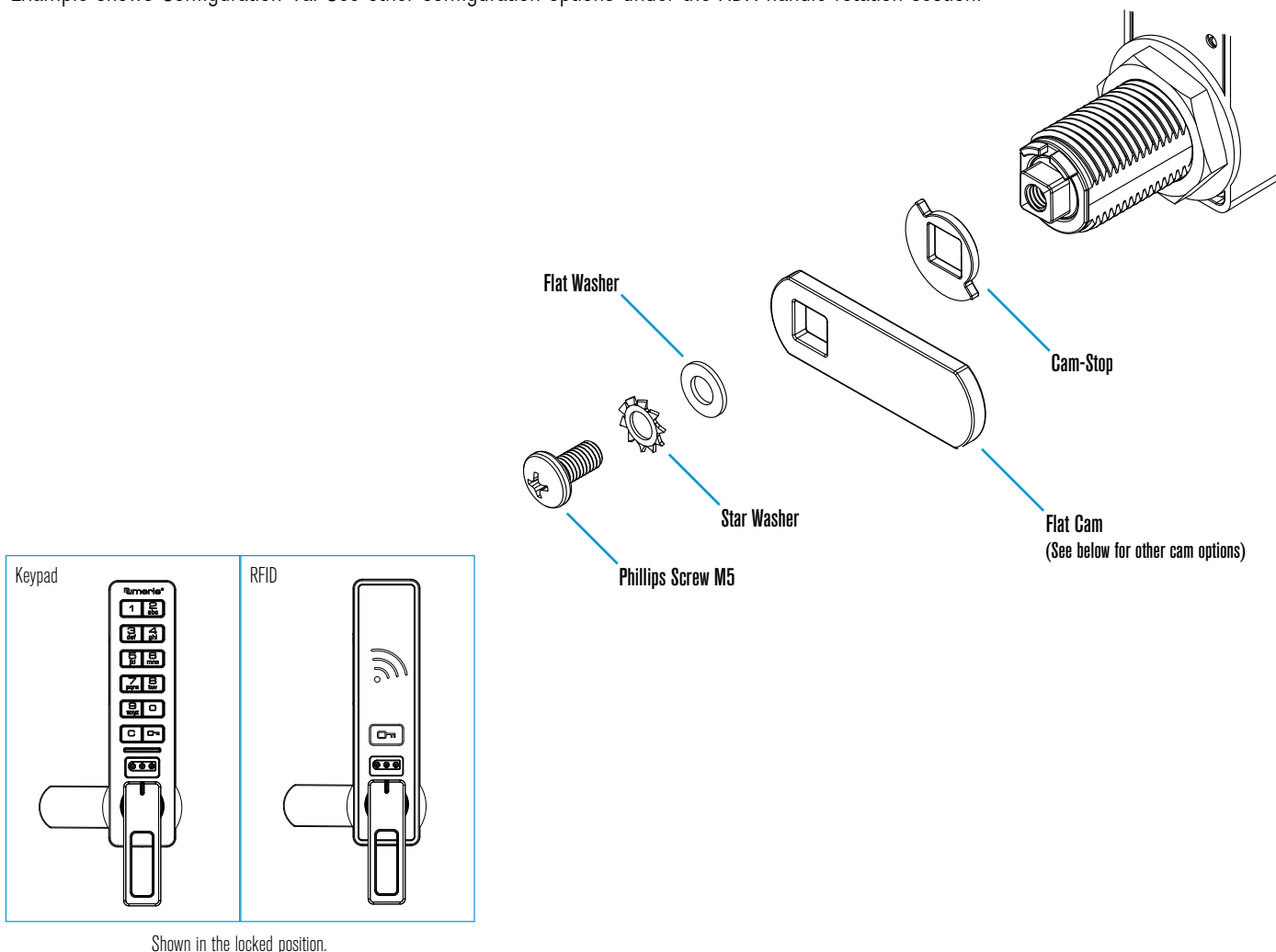


### 4 Clockwise to Unlock

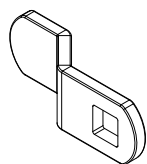


## Vertical - ADA Handle on the Bottom

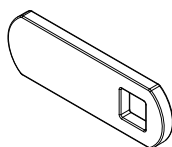
Example shows Configuration 1a. See other configuration options under the ADA handle rotation section.



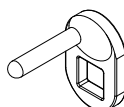
## Cam Options



Offset Cam



Flat Cam



Lifter Cam

## Cam-Stop Options

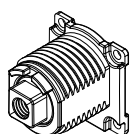


90° Cam-Stop

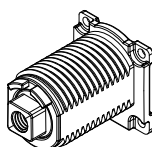


180° Cam-Stop

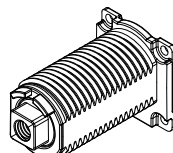
## Cylinder Length Options



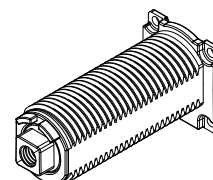
16mm



22mm



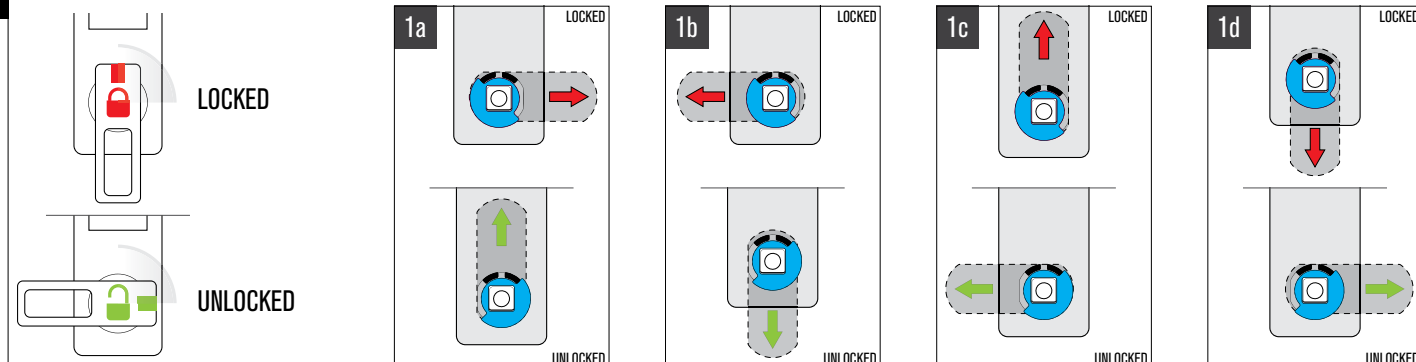
30mm (Standard)



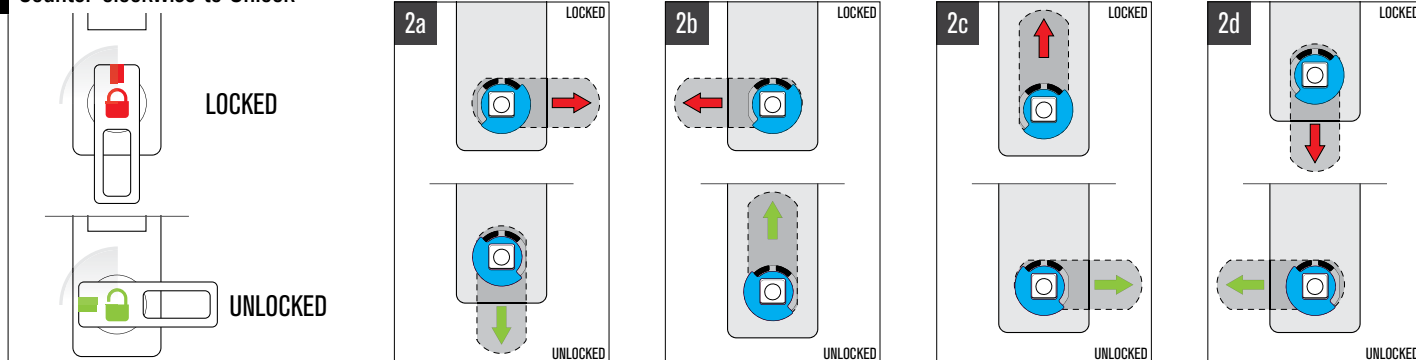
38mm

## 90° ADA Handle Rotation

### 1 Clockwise to Unlock

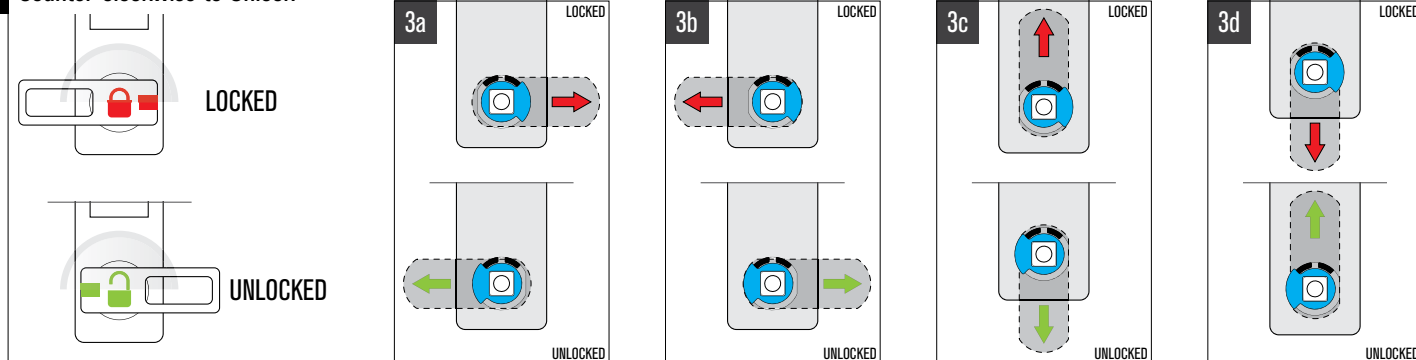


### 2 Counter-clockwise to Unlock

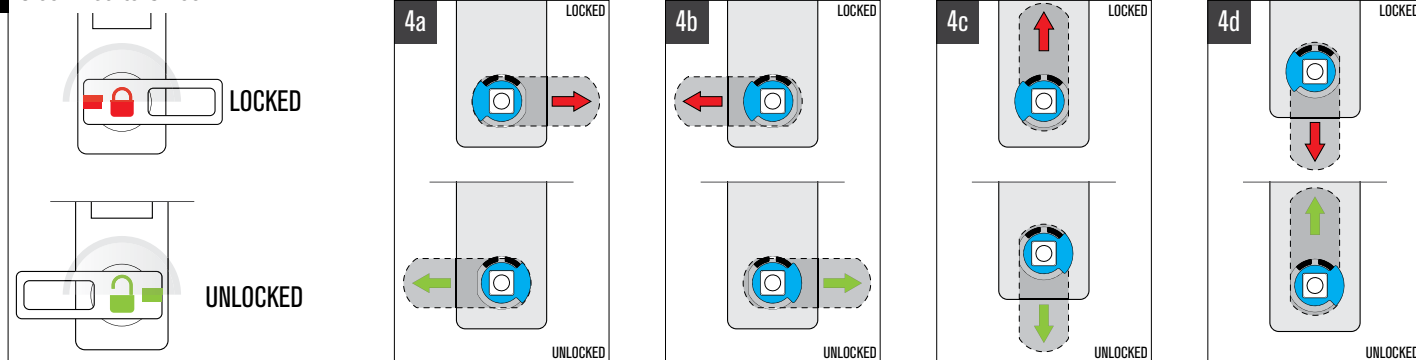


## 180° ADA Handle Rotation

### 3 Counter-clockwise to Unlock

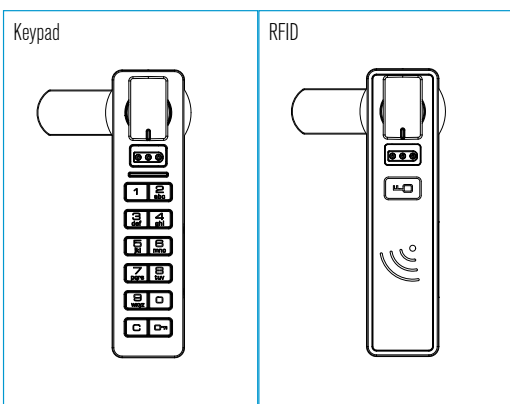
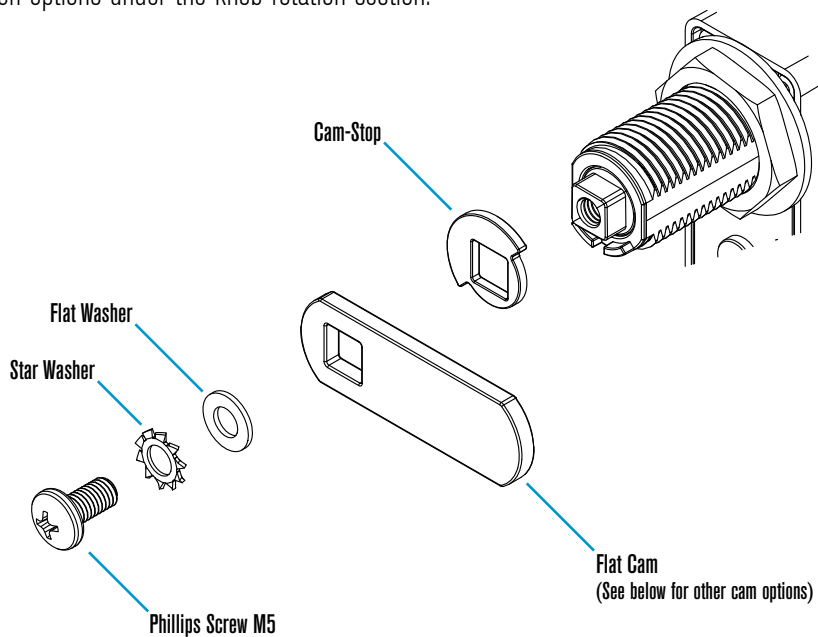


### 4 Clockwise to Unlock



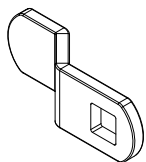
## Vertical - Knob on Top

Example shows Configuration 2b. See other configuration options under the knob rotation section.

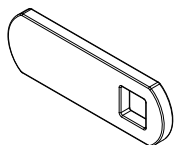


Shown in the locked position.

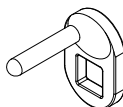
## Cam Options



Offset Cam



Flat Cam



Lifter Cam

## Cam-Stop Options

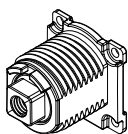


90° Cam-Stop

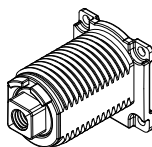


180° Cam-Stop

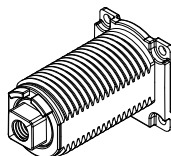
## Cylinder Length Options



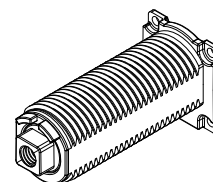
16mm



22mm



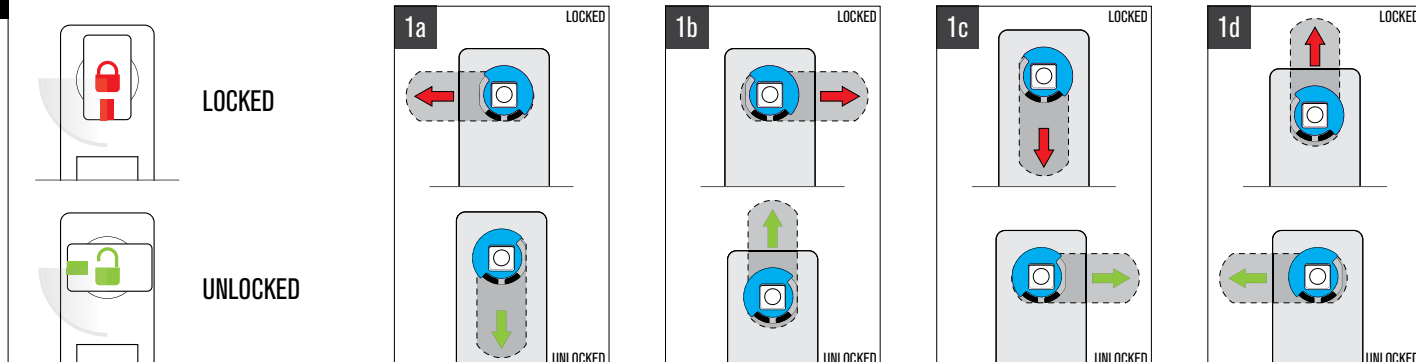
30mm (Standard)



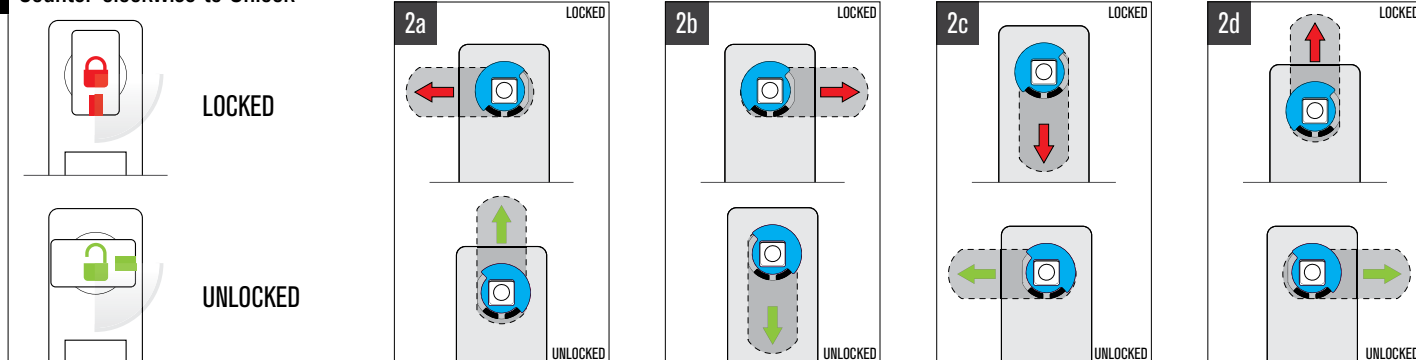
38mm

## 90° Knob Rotation

### 1 Clockwise to Unlock

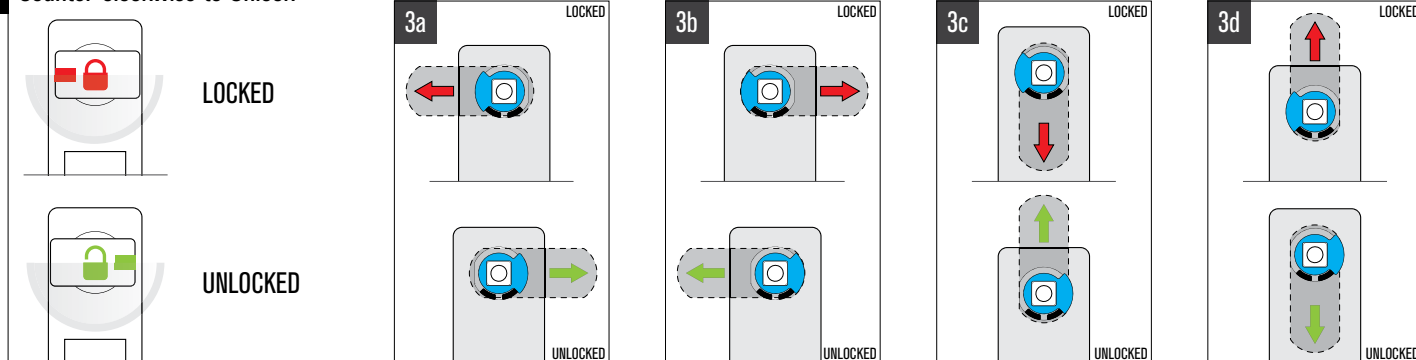


### 2 Counter-clockwise to Unlock

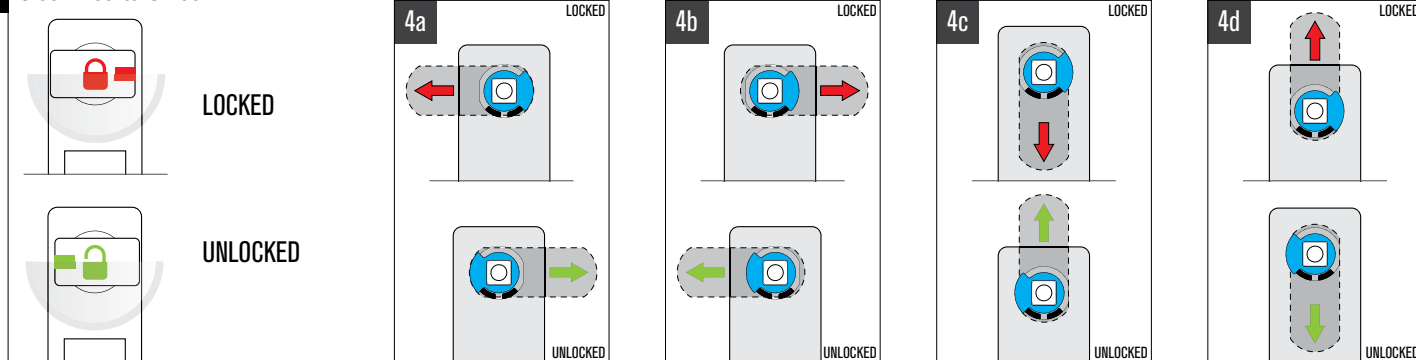


## 180° Knob Rotation

### 3 Counter-clockwise to Unlock

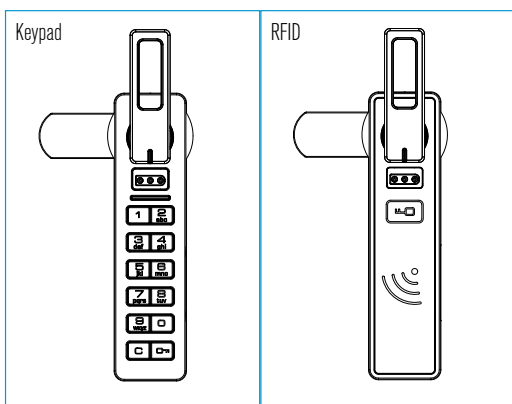
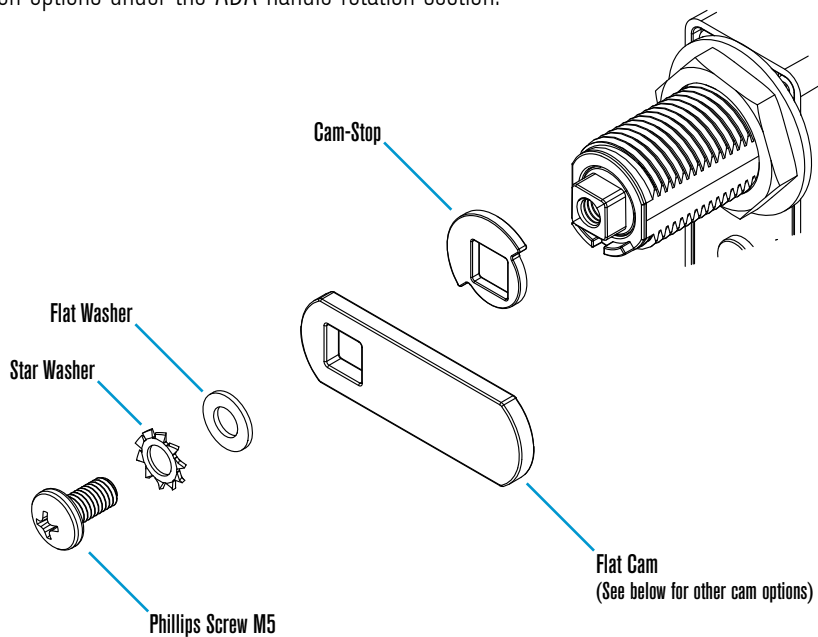


### 4 Clockwise to Unlock



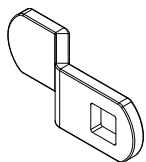
## Vertical - ADA Handle on Top

Example shows Configuration 2b. See other configuration options under the ADA handle rotation section.

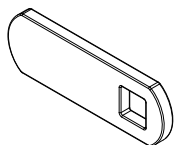


Shown in the locked position.

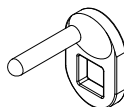
## Cam Options



Offset Cam



Flat Cam



Lifter Cam

## Cam-Stop Options

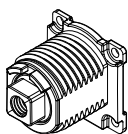


90° Cam-Stop

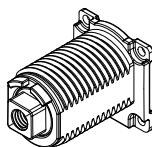


180° Cam-Stop

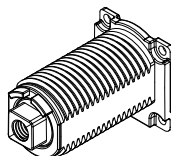
## Cylinder Length Options



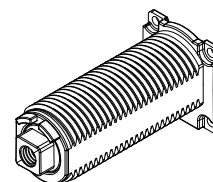
16mm



22mm



30mm (Standard)

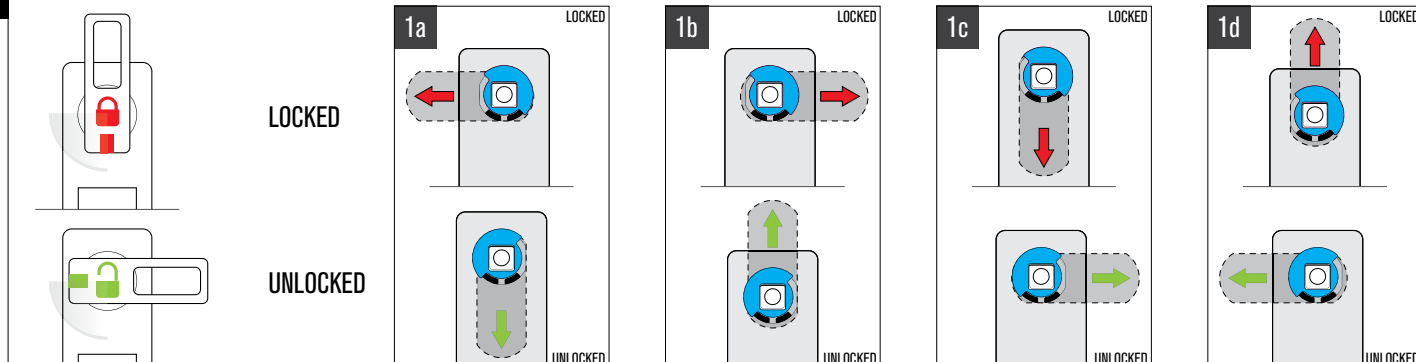


38mm

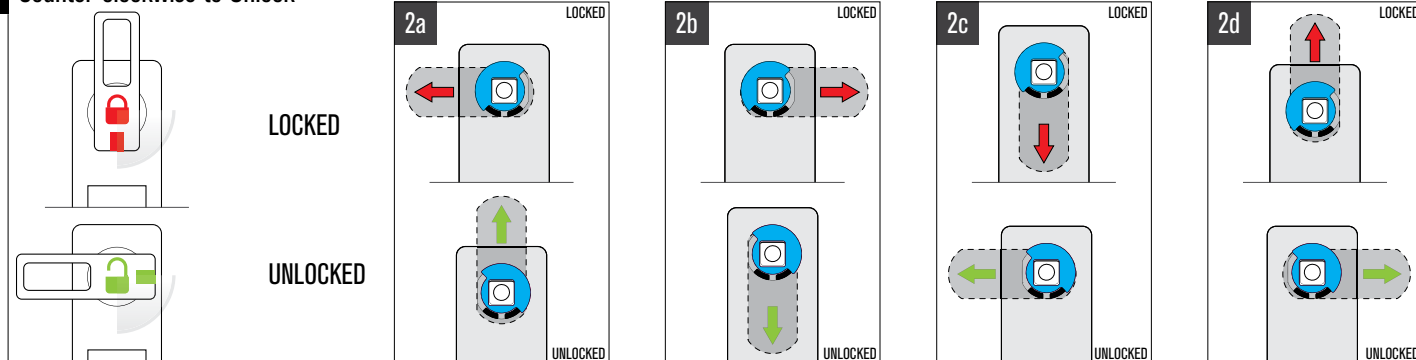


## 90° ADA Handle Rotation

### 1 Clockwise to Unlock

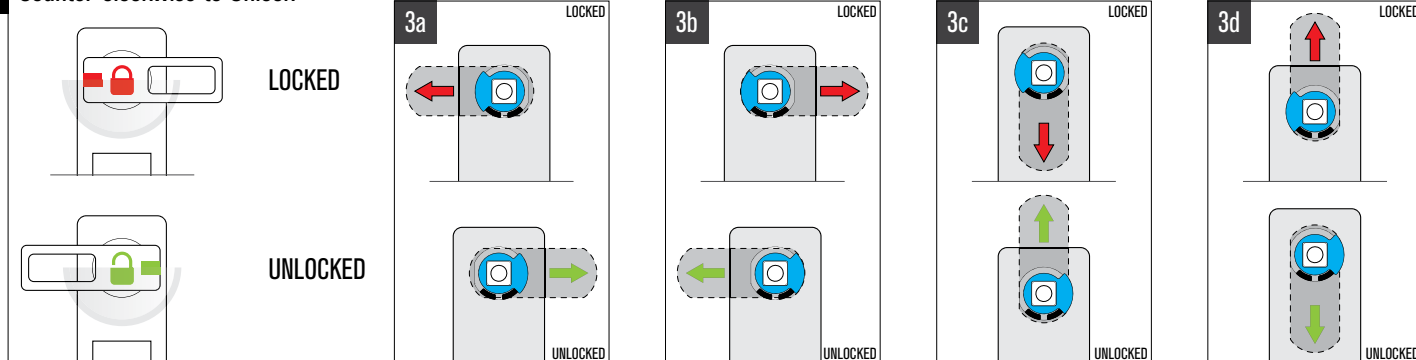


### 2 Counter-clockwise to Unlock

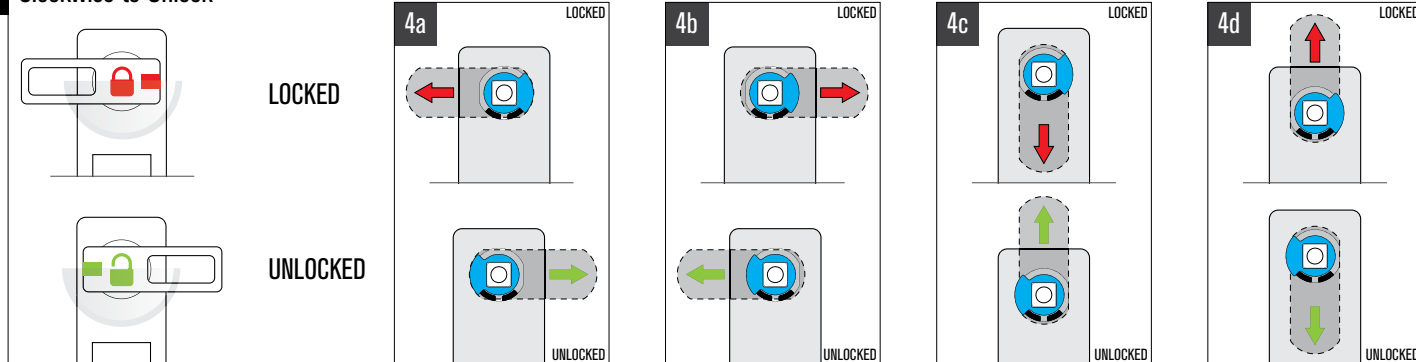


## 180° ADA Handle Rotation

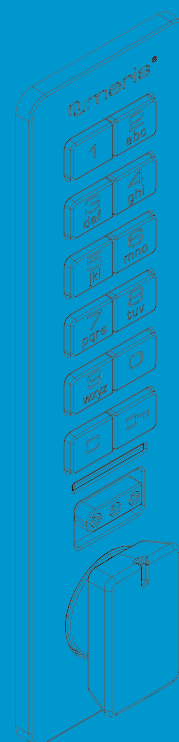
### 3 Counter-clockwise to Unlock



### 4 Clockwise to Unlock



**Digilock**<sup>®</sup>  
security simplified<sup>®</sup>



[support@digilock.com](mailto:support@digilock.com)