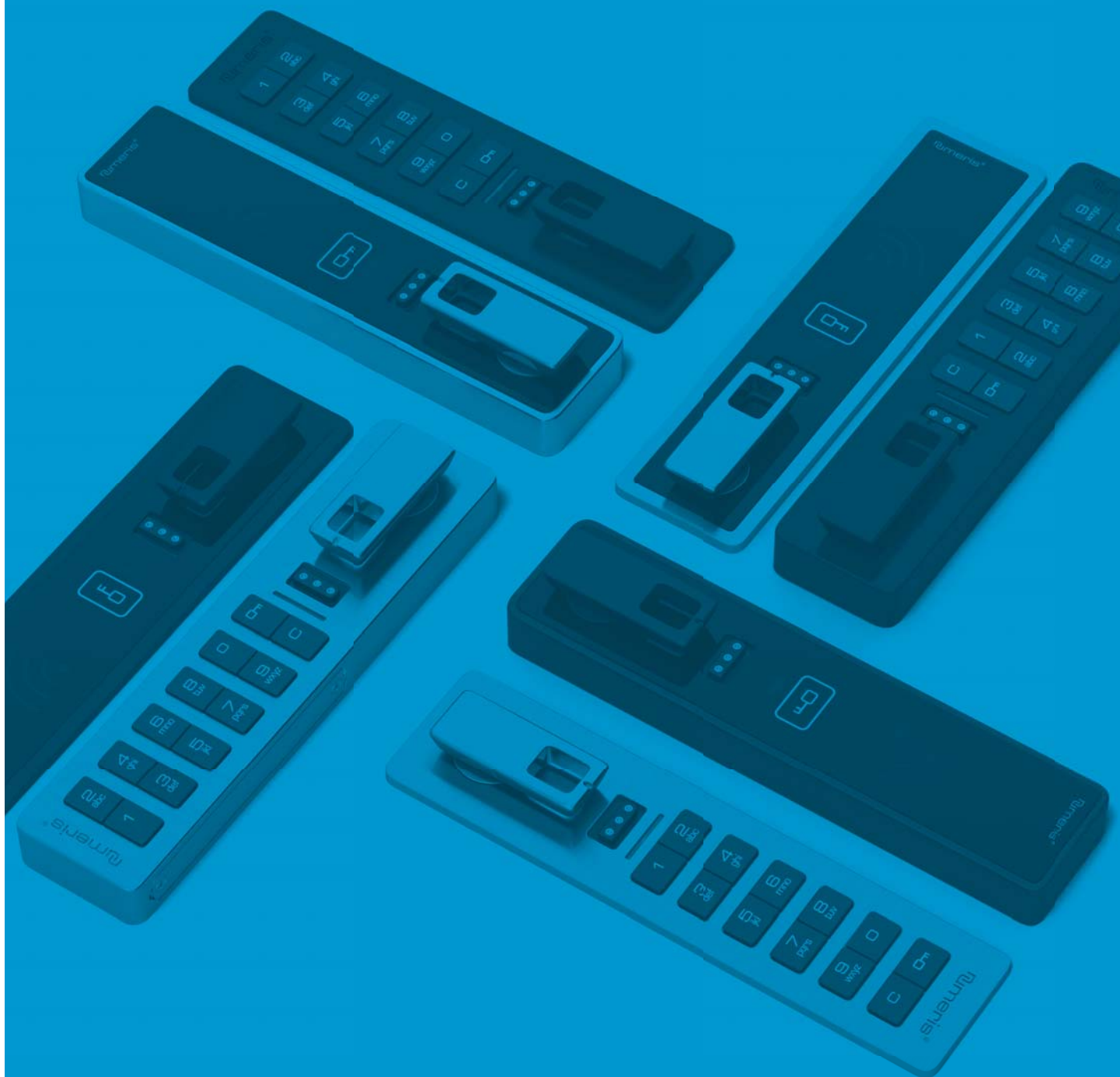


versa[®]

STANDARD

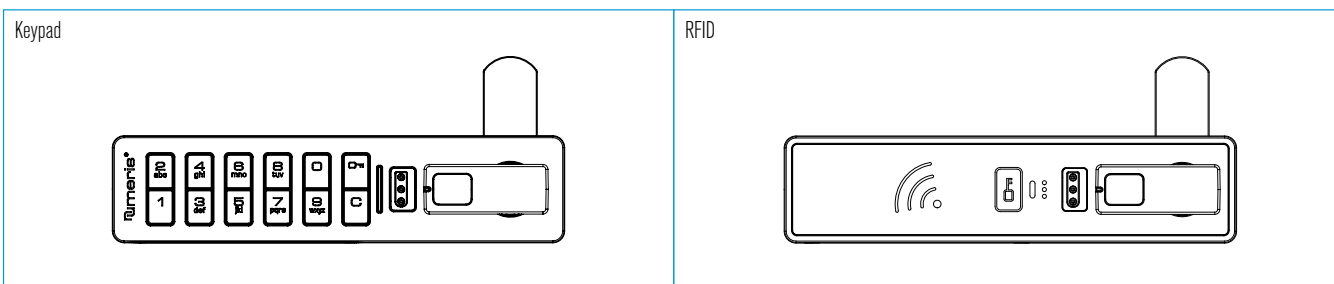
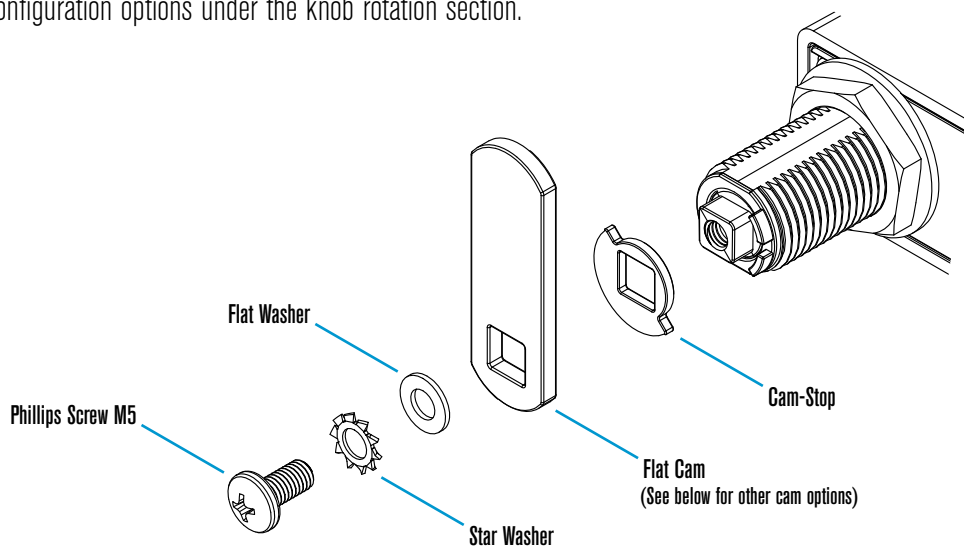
standard knob & ADA-handle



CAM
GUIDE

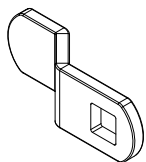
Horizontal - Knob on the Right

Example shows Configuration 2a. See other configuration options under the knob rotation section.

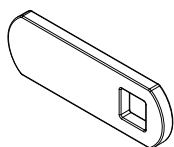


Shown in the locked position.

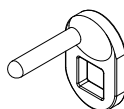
Cam Options



Offset Cam



Flat Cam



Lifter Cam

Cam-Stop Options

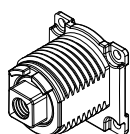


90° Cam-Stop

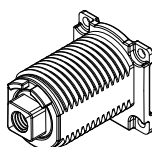


180° Cam-Stop

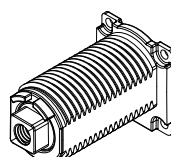
Cylinder Length Options



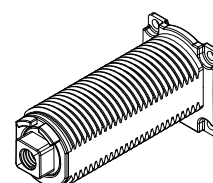
16mm



22mm



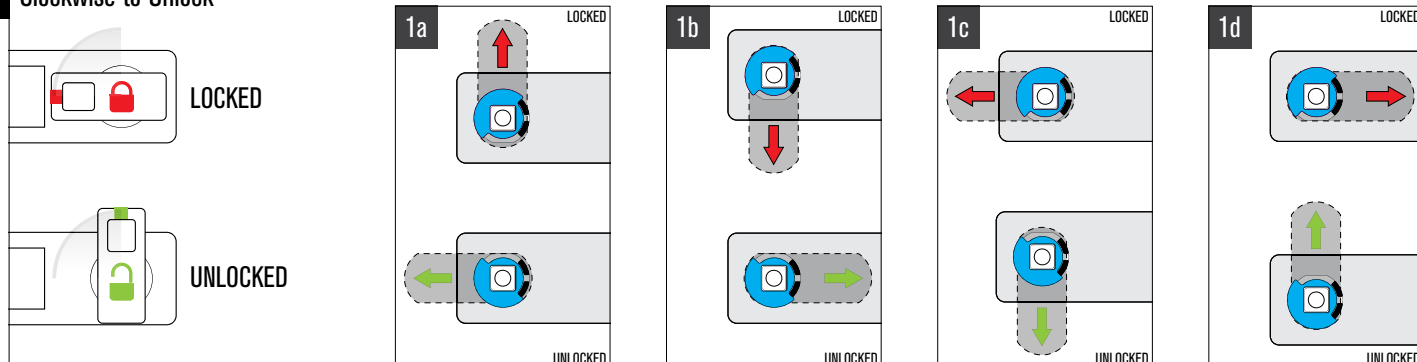
30mm (Standard)



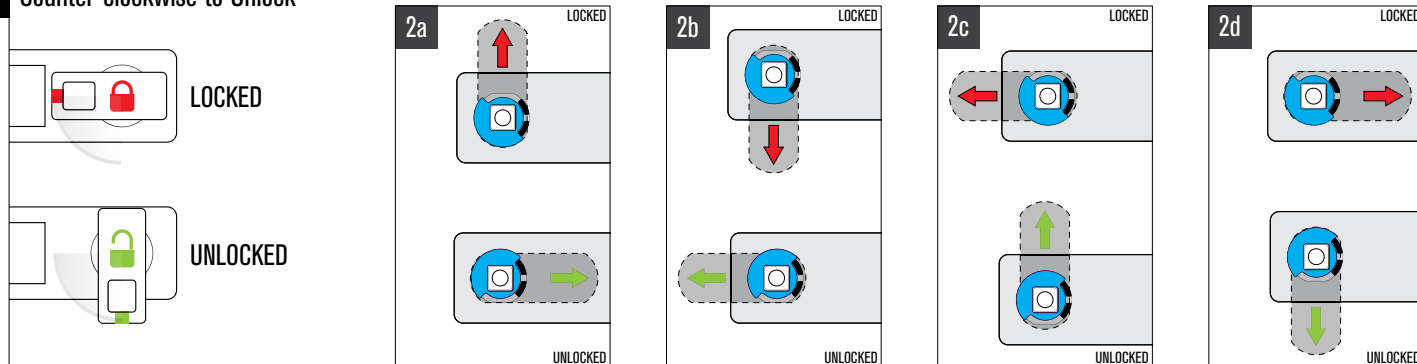
38mm

90° Knob Rotation

1 Clockwise to Unlock

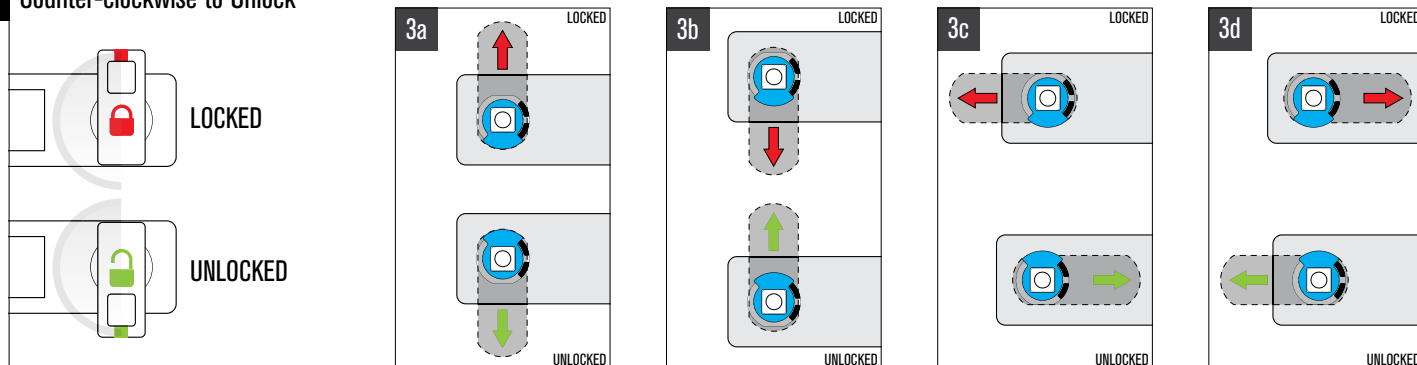


2 Counter-clockwise to Unlock

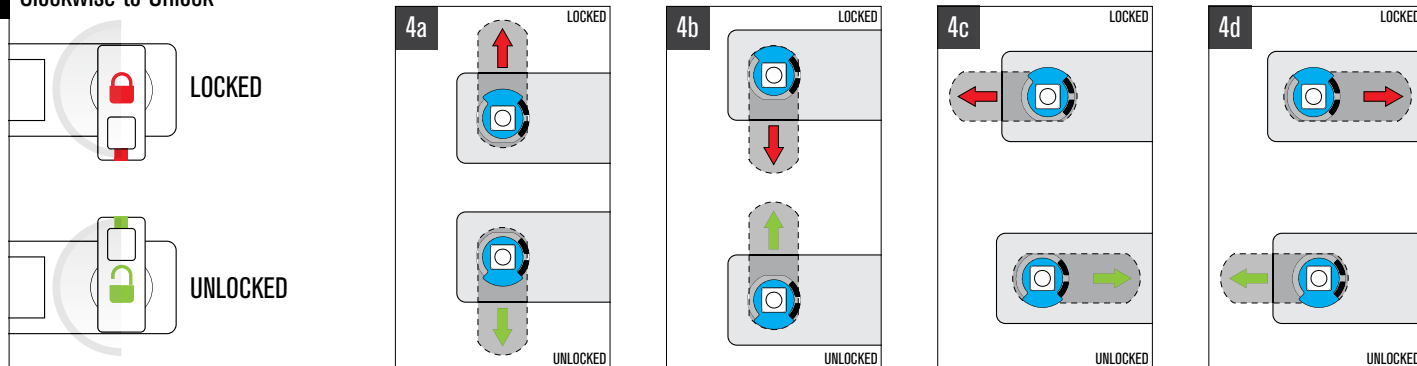


180° Knob Rotation

3 Counter-clockwise to Unlock

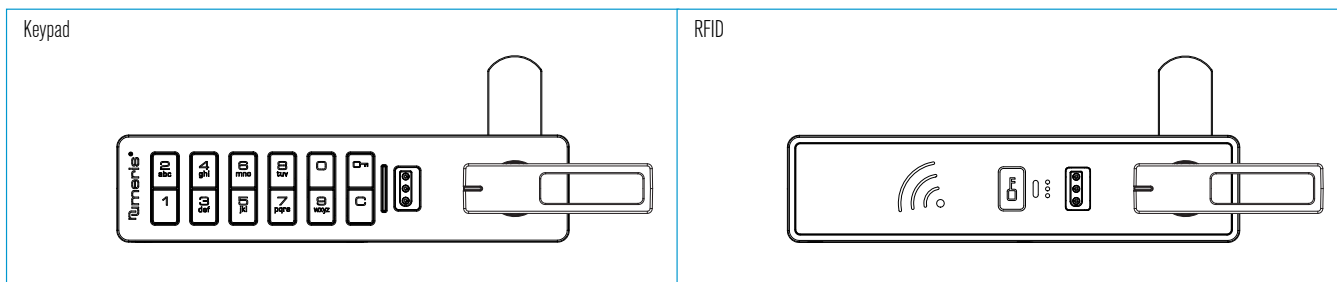
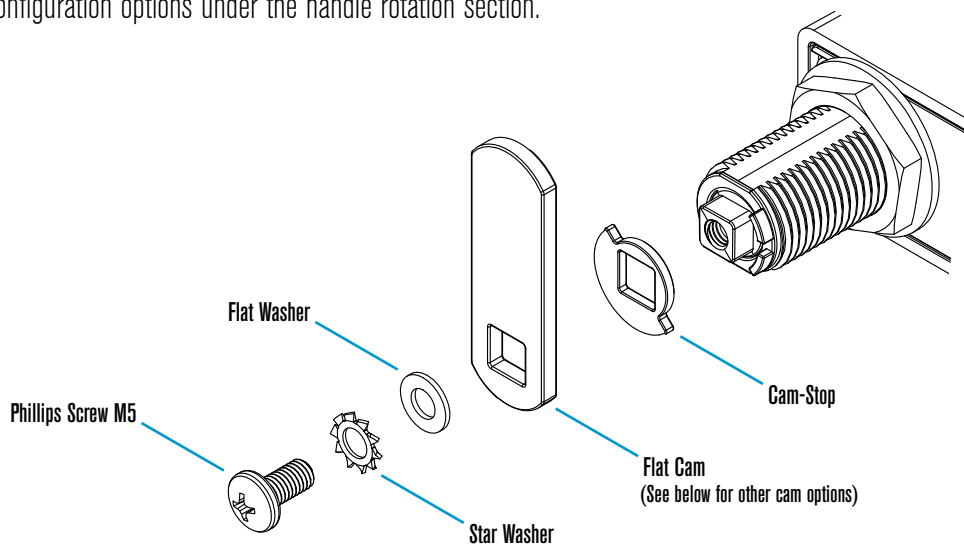


4 Clockwise to Unlock



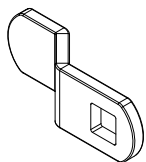
Horizontal - ADA Handle on the Right

Example shows Configuration 2a. See other configuration options under the handle rotation section.

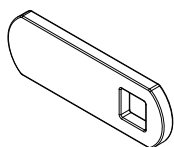


Shown in the locked position.

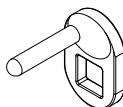
Cam Options



Offset Cam



Flat Cam



Lifter Cam

Cam-Stop Options

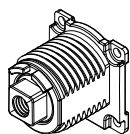


90° Cam-Stop

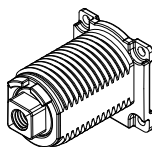


180° Cam-Stop

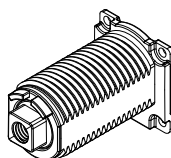
Cylinder Length Options



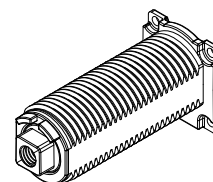
16mm



22mm



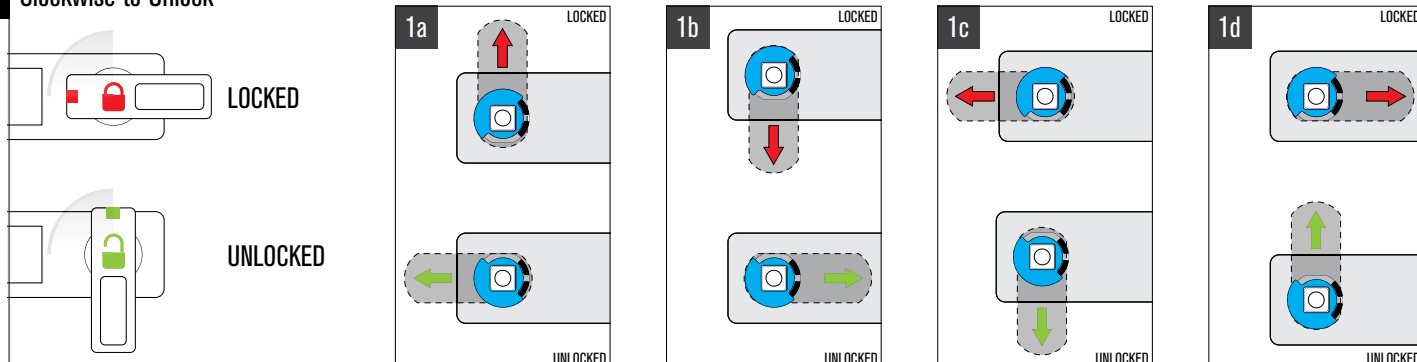
30mm (Standard)



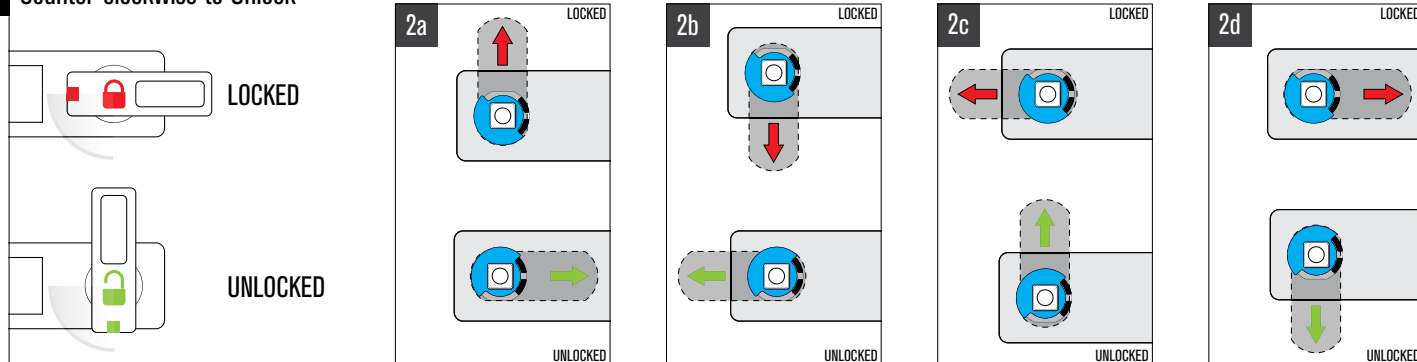
38mm

90° ADA Handle Rotation

1 Clockwise to Unlock

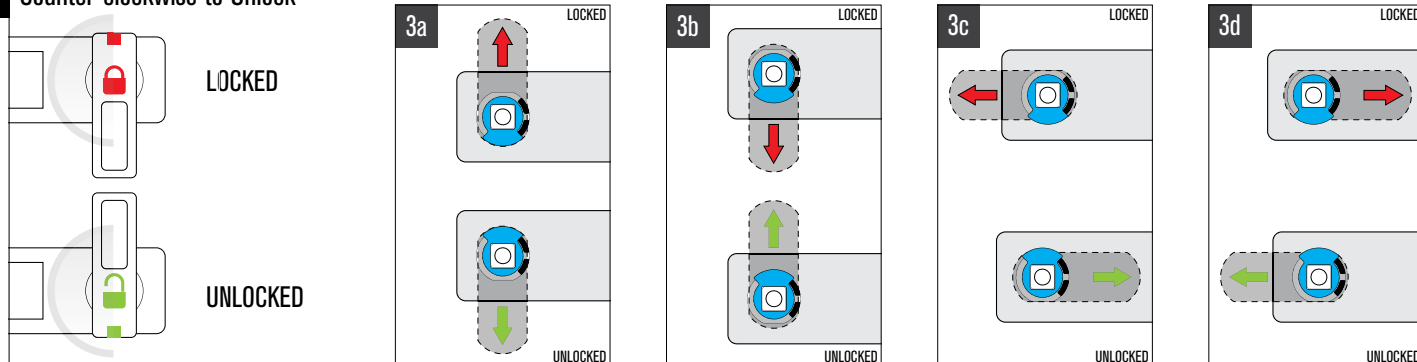


2 Counter-clockwise to Unlock

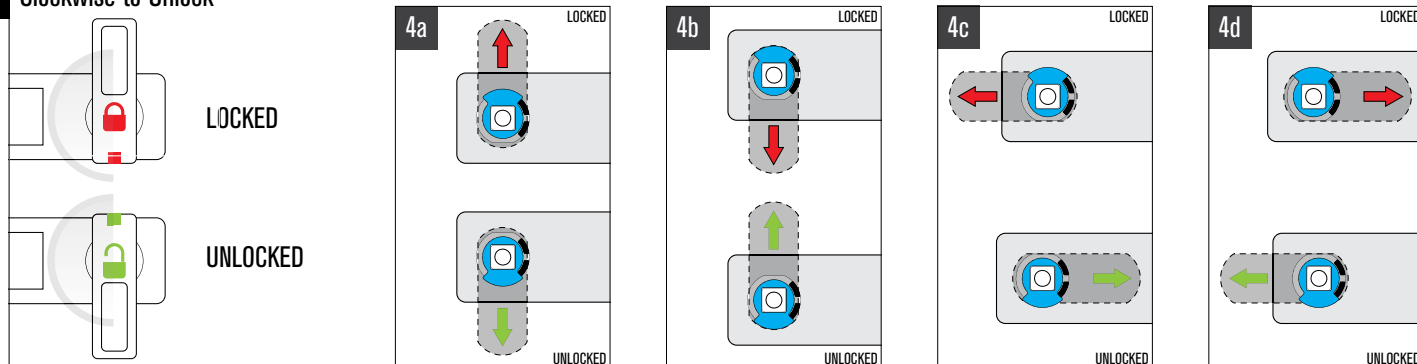


180° ADA Handle Rotation

3 Counter-clockwise to Unlock

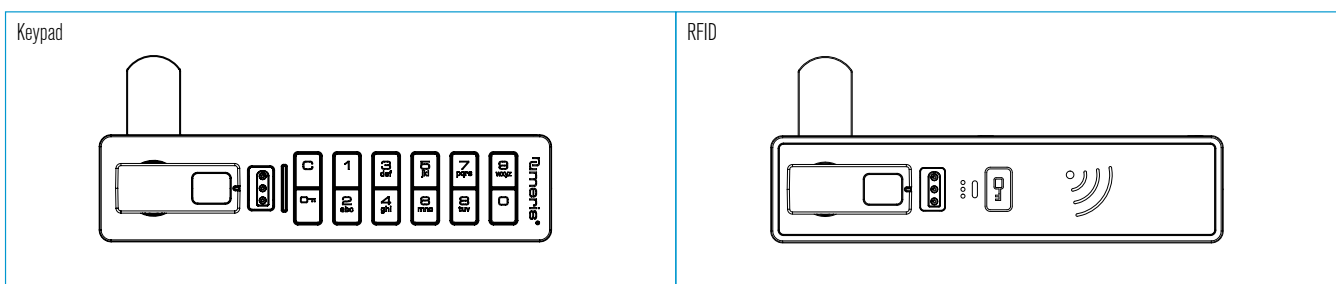
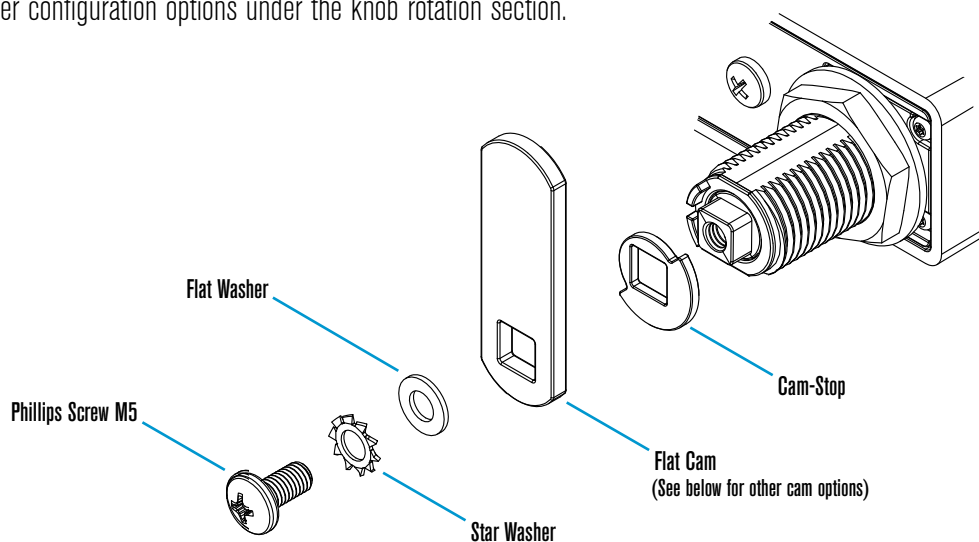


4 Clockwise to Unlock



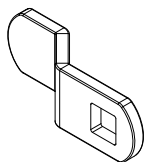
Horizontal - Knob on the Left

Example shows Configuration 1b. See other configuration options under the knob rotation section.

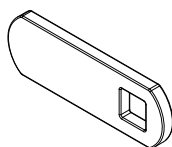


Shown in the locked position.

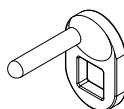
Cam Options



Offset Cam



Flat Cam



Lifter Cam

Cam-Stop Options

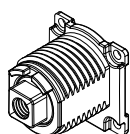


90° Cam-Stop

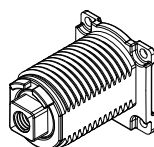


180° Cam-Stop

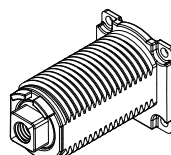
Cylinder Length Options



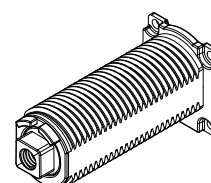
16mm



22mm



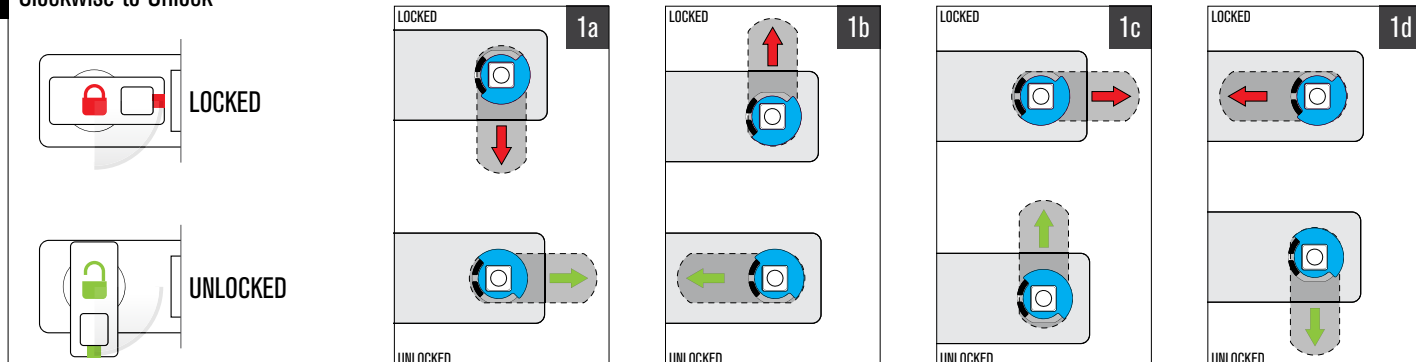
30mm (Standard)



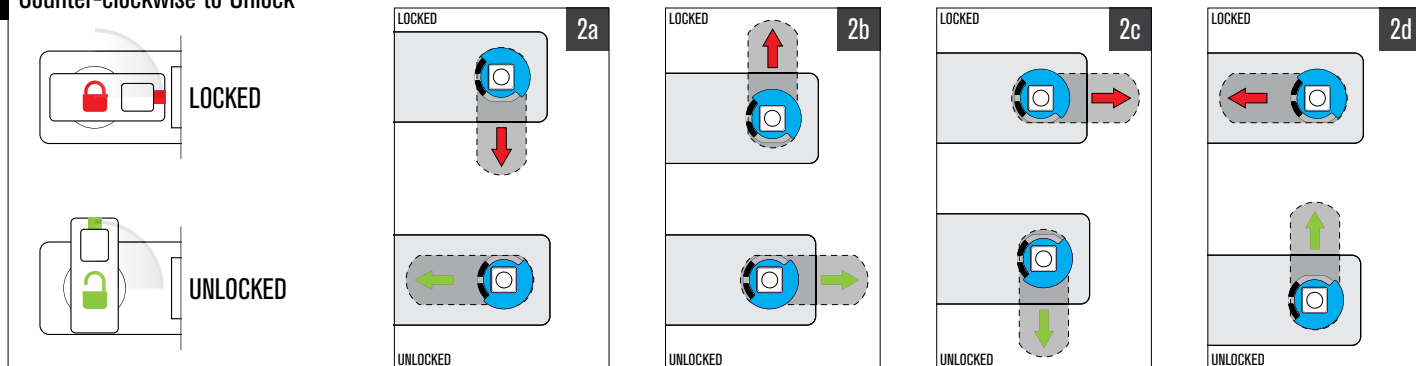
38mm

90° Knob Rotation

1 Clockwise to Unlock

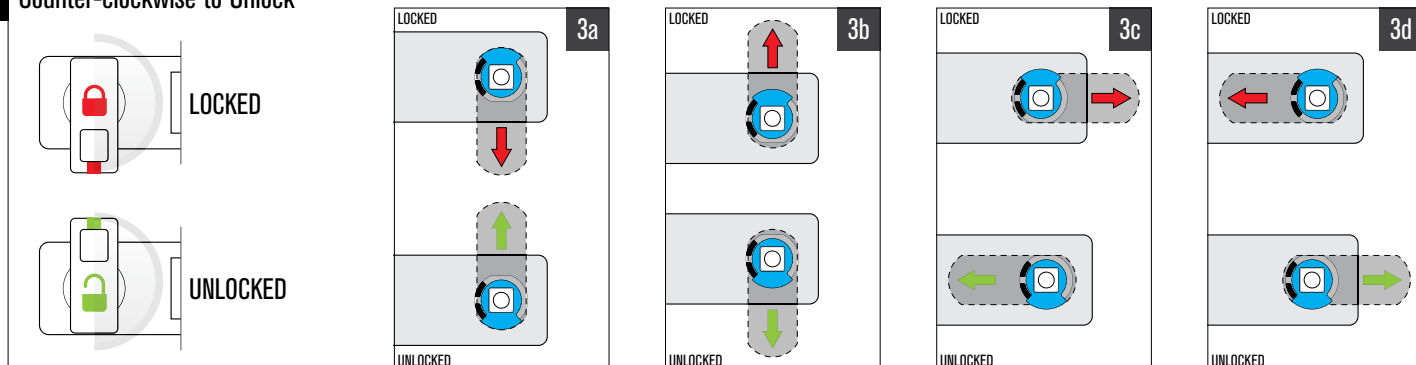


2 Counter-clockwise to Unlock

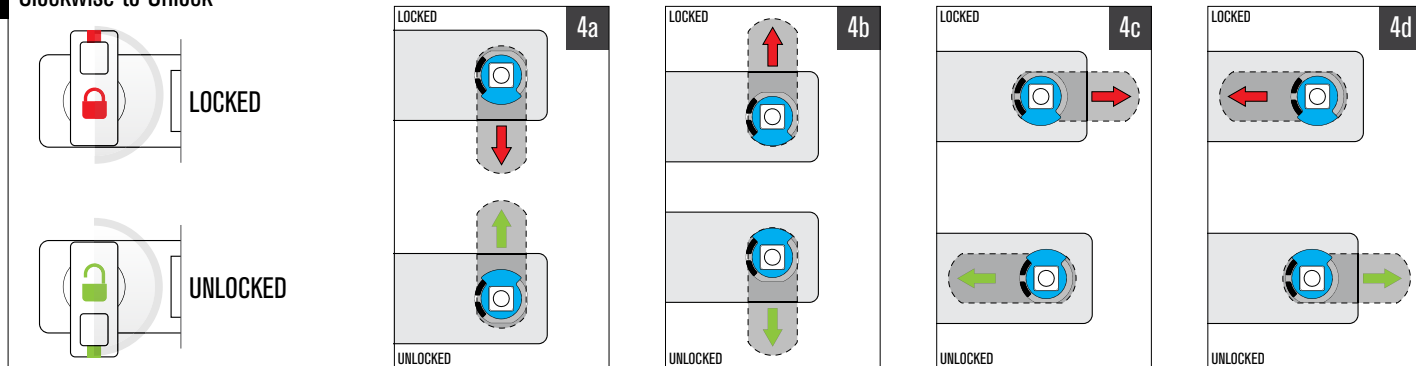


180° Knob Rotation

3 Counter-clockwise to Unlock

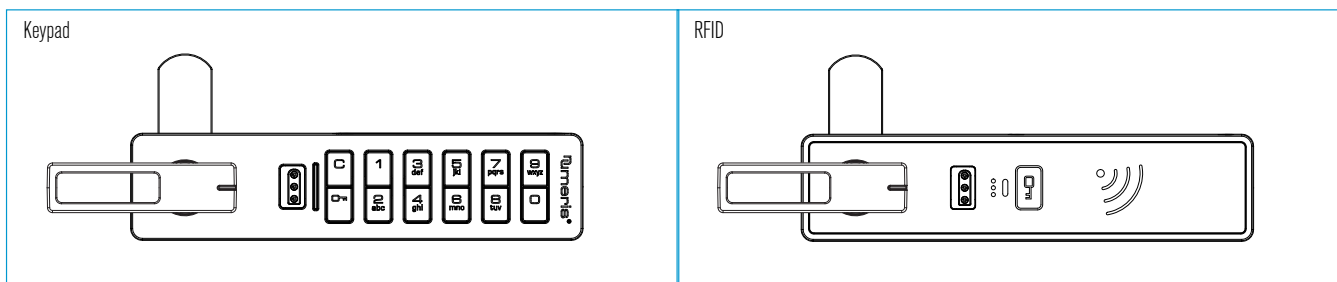
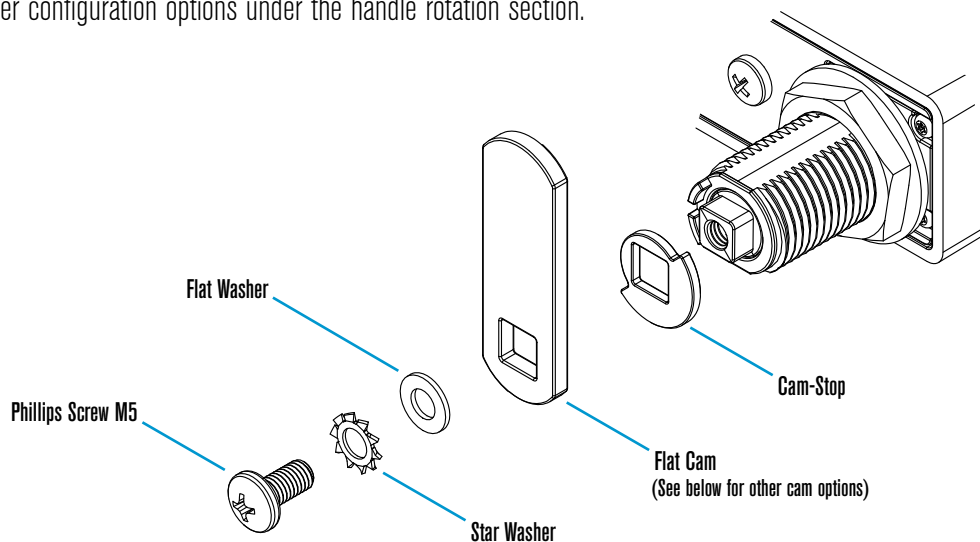


4 Clockwise to Unlock



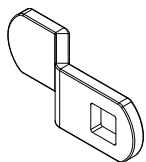
Horizontal - ADA Handle on the Left

Example shows Configuration 1b. See other configuration options under the handle rotation section.

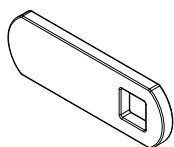


Shown in the locked position.

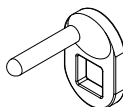
Cam Options



Offset Cam



Flat Cam



Lifter Cam

Cam-Stop Options

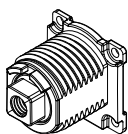


90° Cam-Stop

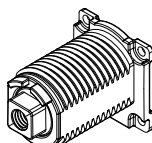


180° Cam-Stop

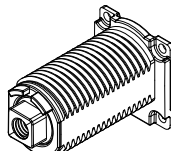
Cylinder Length Options



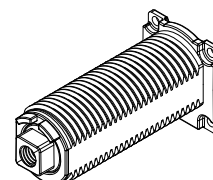
16mm



22mm



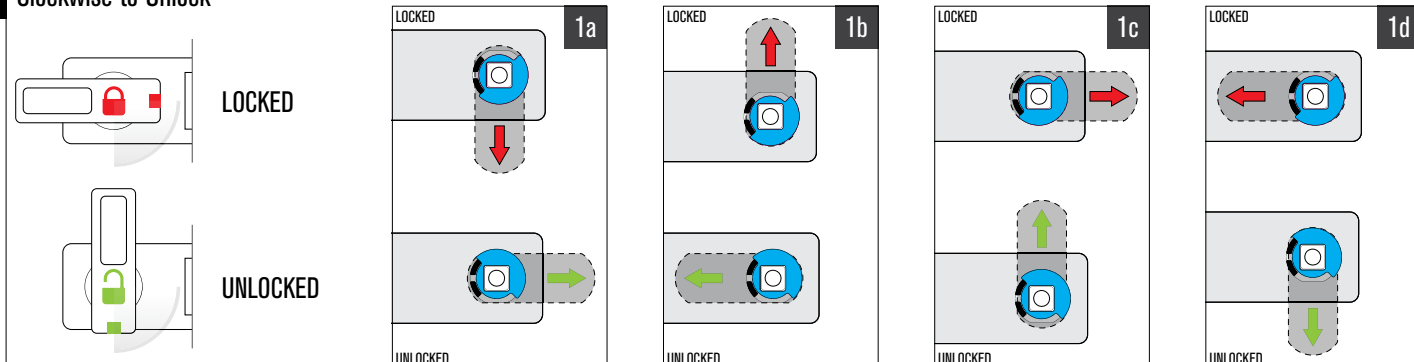
30mm (Standard)



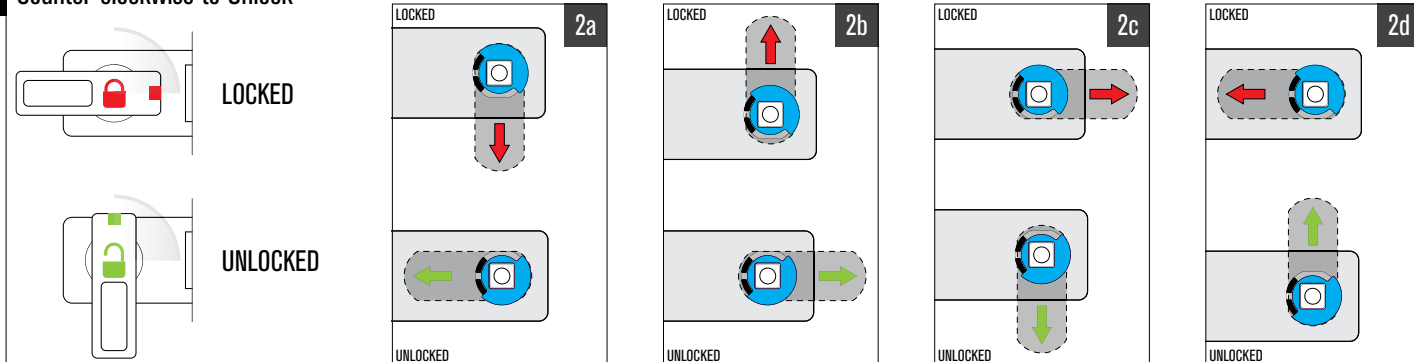
38mm

90° ADA Handle Rotation

1 Clockwise to Unlock

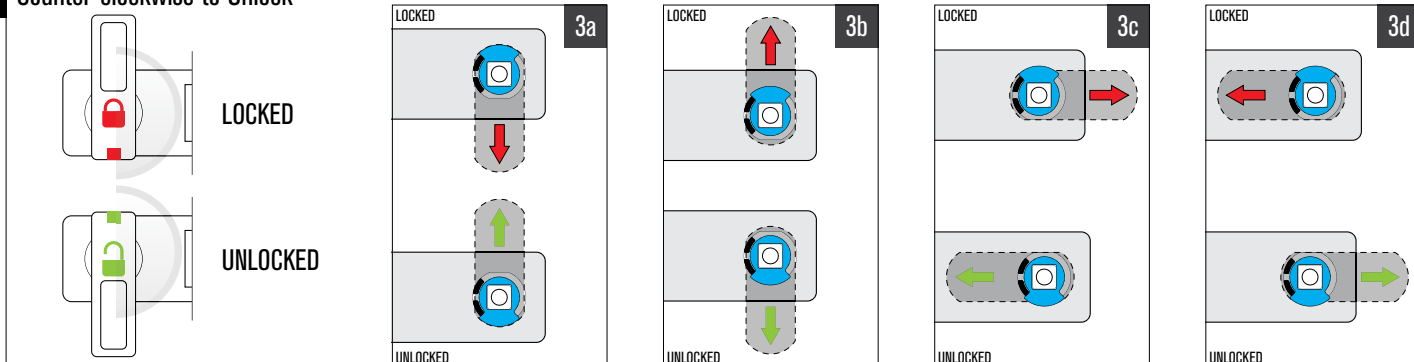


2 Counter-clockwise to Unlock

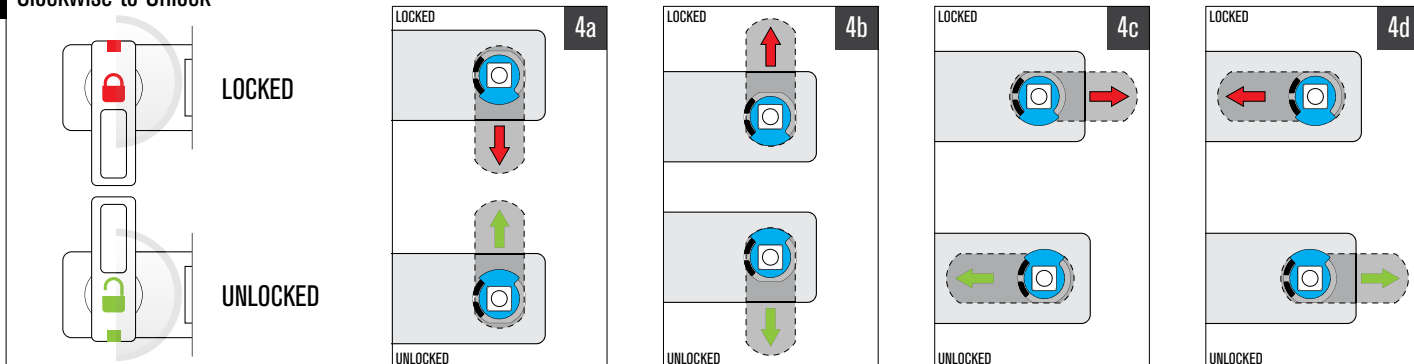


180° ADA Handle Rotation

3 Counter-clockwise to Unlock

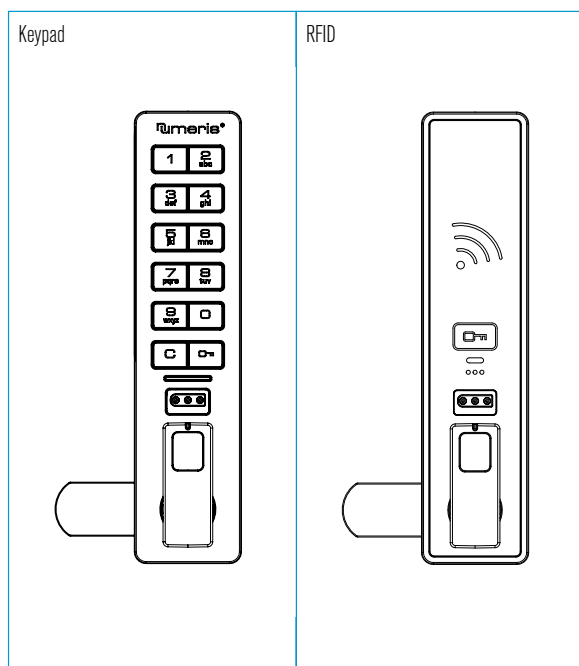


4 Clockwise to Unlock

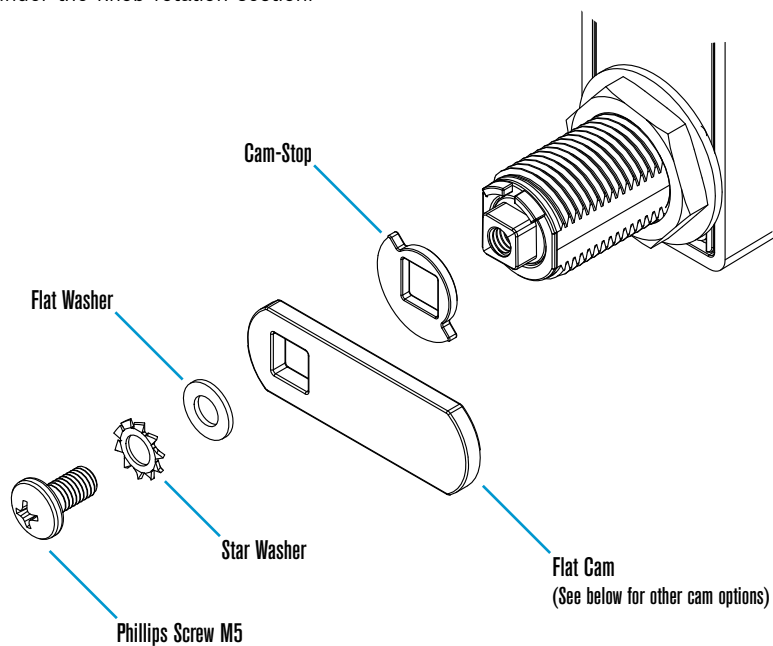


Vertical - Knob on the Bottom

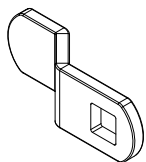
Example shows Configuration 1a. See other configuration options under the knob rotation section.



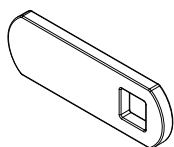
Shown in the locked position.



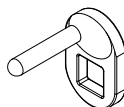
Cam Options



Offset Cam



Flat Cam



Lifter Cam

Cam-Stop Options

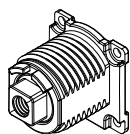


90° Cam-Stop

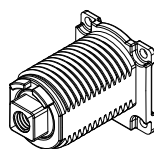


180° Cam-Stop

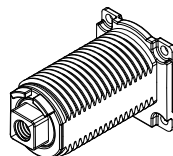
Cylinder Length Options



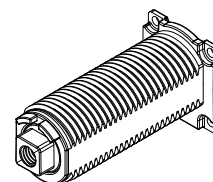
16mm



22mm



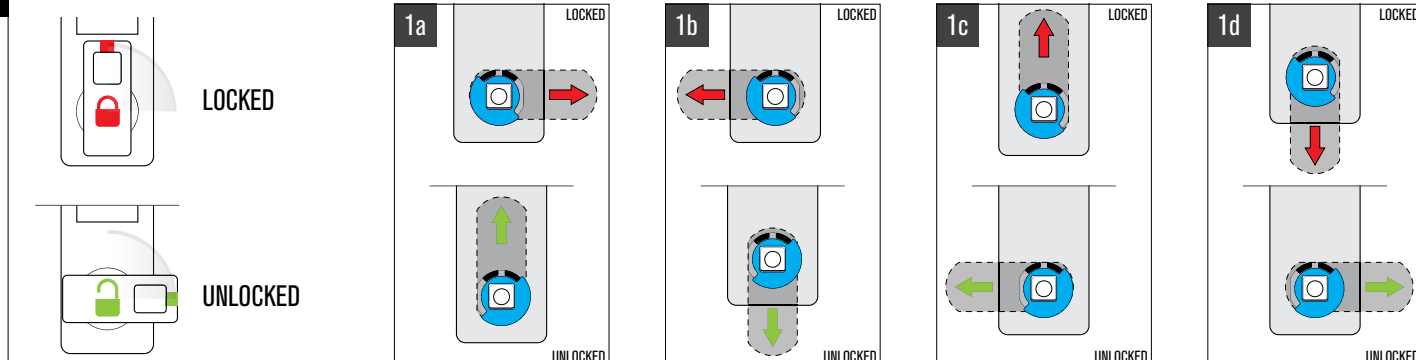
30mm (Standard)



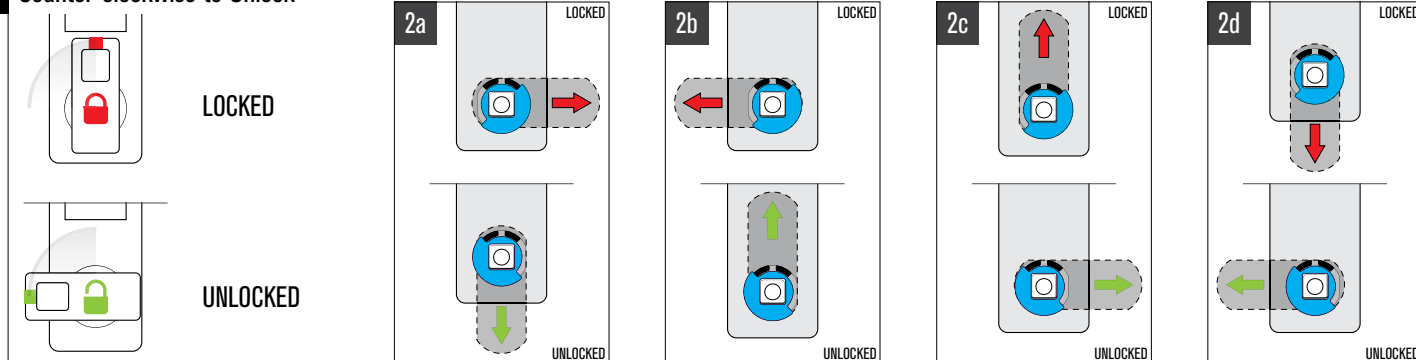
38mm

90° Knob Rotation

1 Clockwise to Unlock

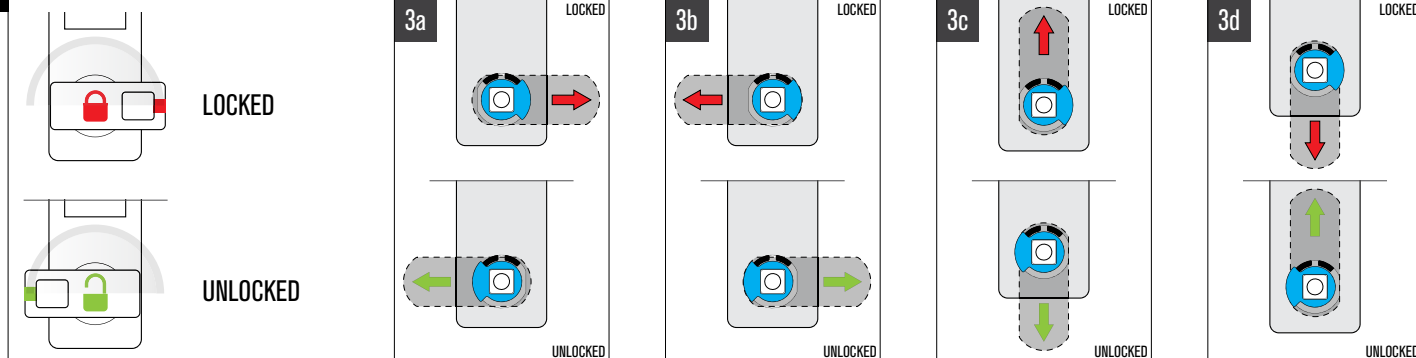


2 Counter-clockwise to Unlock

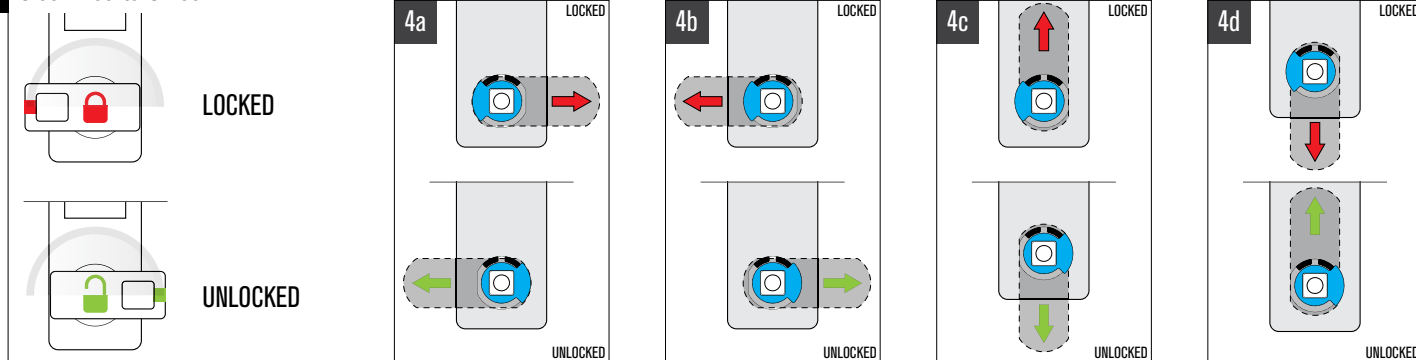


180° Knob Rotation

3 Counter-clockwise to Unlock

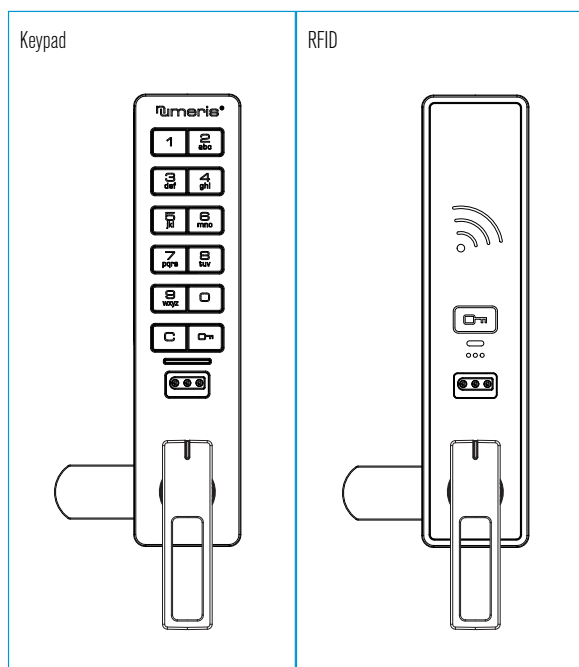


4 Clockwise to Unlock

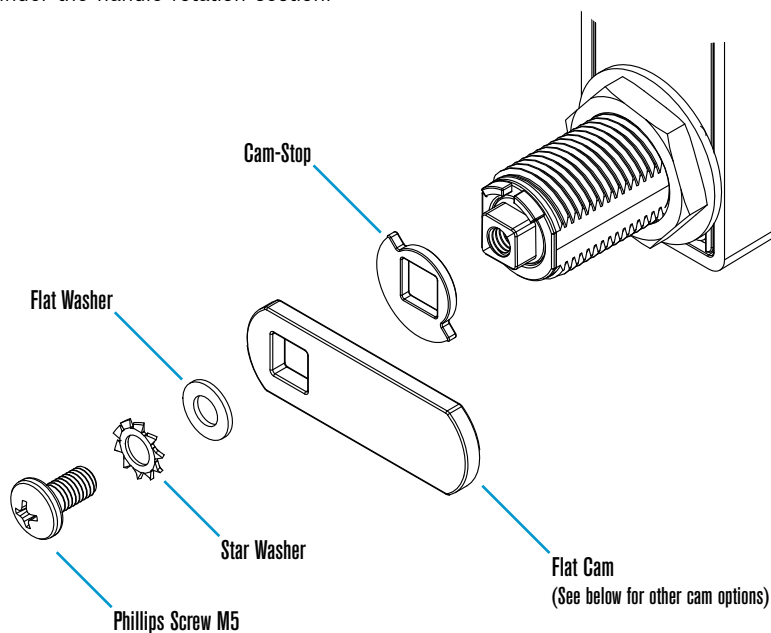


Vertical - ADA Handle on the Bottom

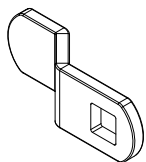
Example shows Configuration 1a. See other configuration options under the handle rotation section.



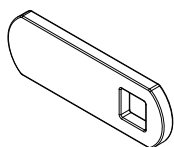
Shown in the locked position.



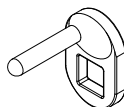
Cam Options



Offset Cam



Flat Cam



Lifter Cam

Cam-Stop Options

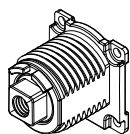


90° Cam-Stop

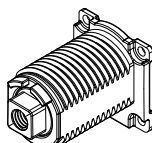


180° Cam-Stop

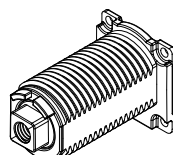
Cylinder Length Options



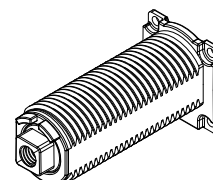
16mm



22mm



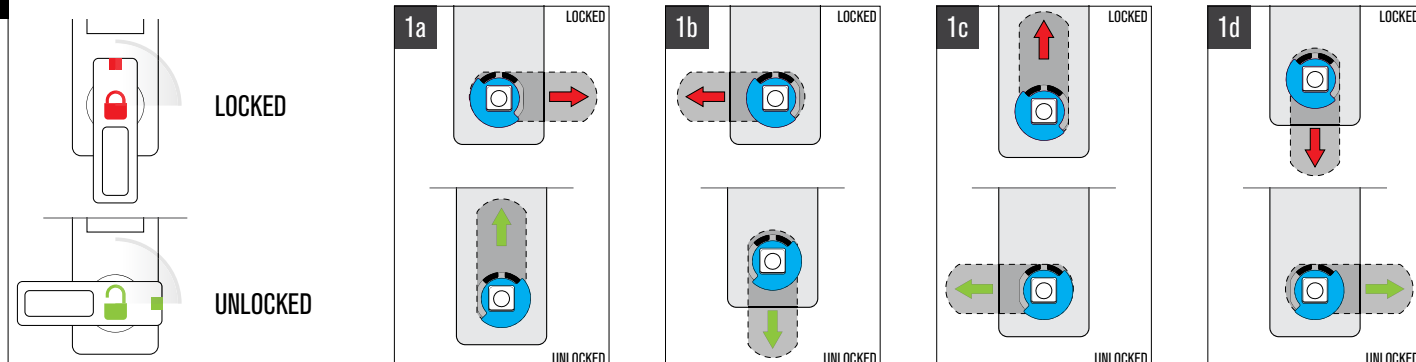
30mm (Standard)



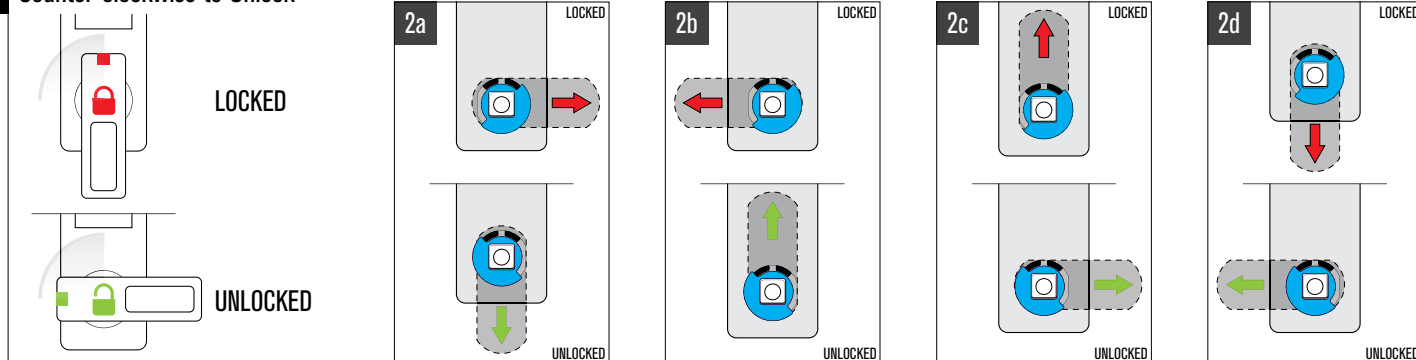
38mm

90° ADA Handle Rotation

1 Clockwise to Unlock

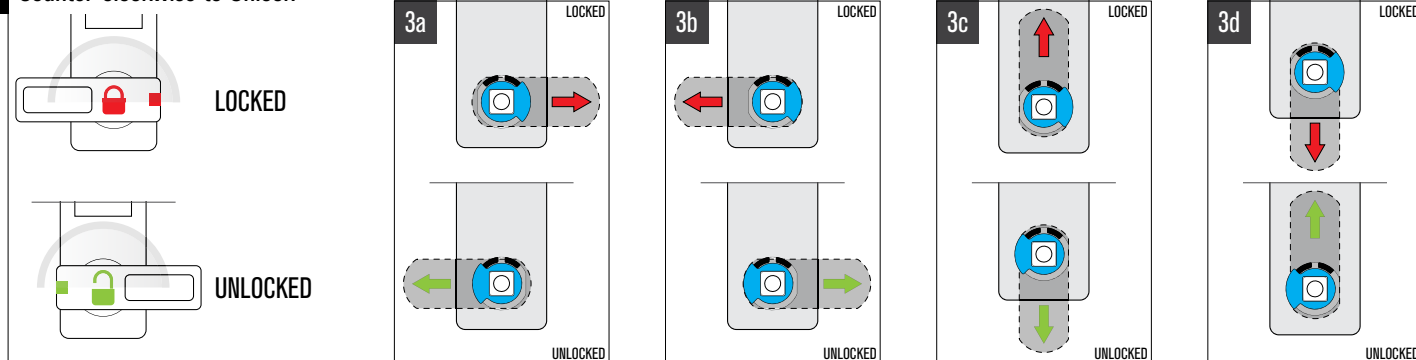


2 Counter-clockwise to Unlock

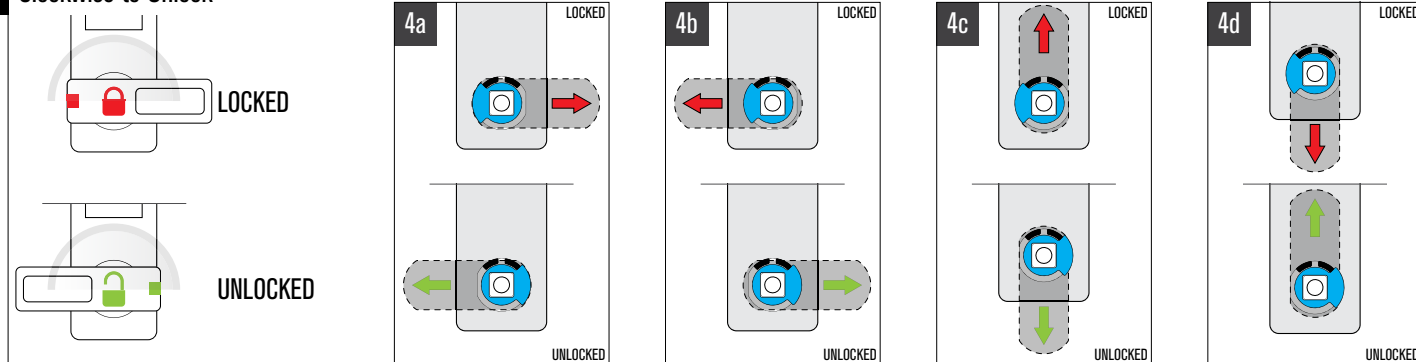


180° ADA Handle Rotation

3 Counter-clockwise to Unlock

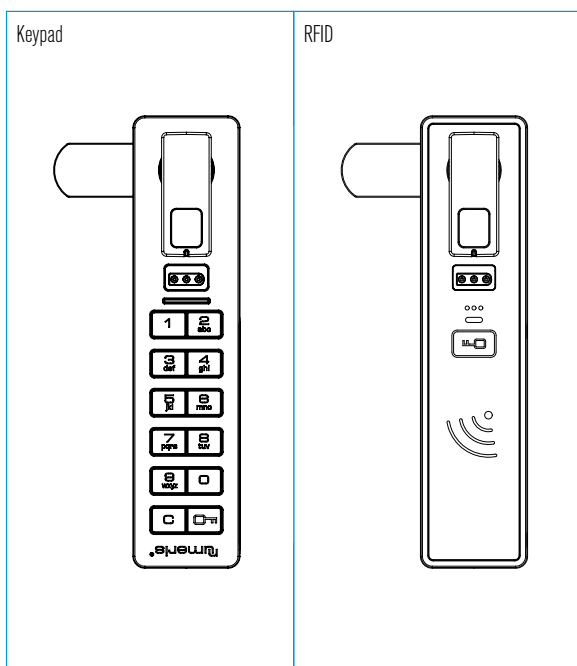


4 Clockwise to Unlock

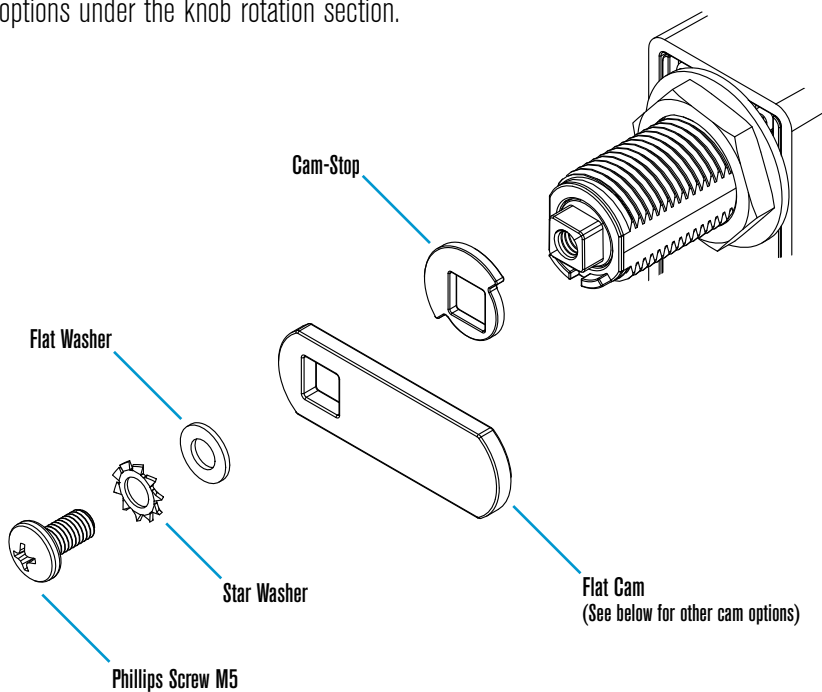


Vertical - Knob on Top

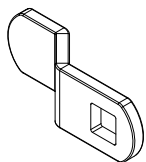
Example shows Configuration 2b. See other configuration options under the knob rotation section.



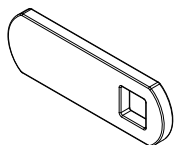
Shown in the locked position.



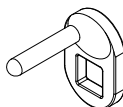
Cam Options



Offset Cam



Flat Cam



Lifter Cam

Cam-Stop Options

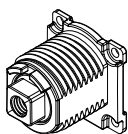


90° Cam-Stop

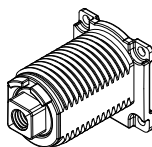


180° Cam-Stop

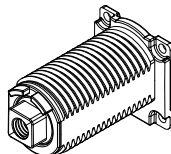
Cylinder Length Options



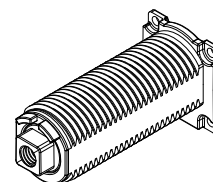
16mm



22mm



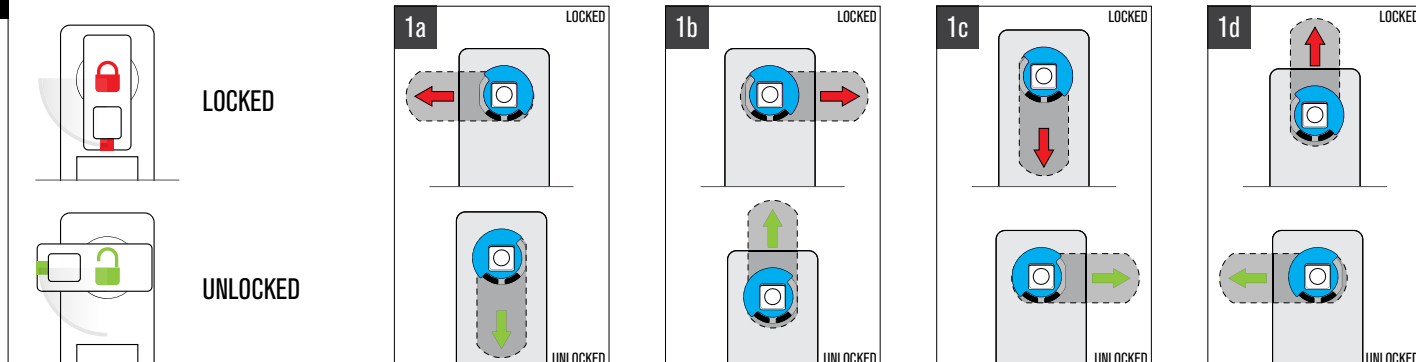
30mm (Standard)



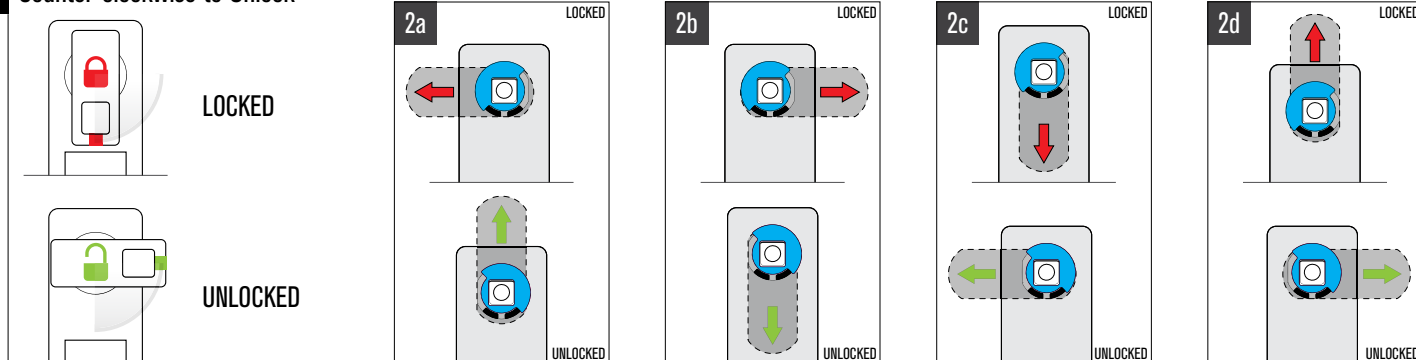
38mm

90° Knob Rotation

1 Clockwise to Unlock

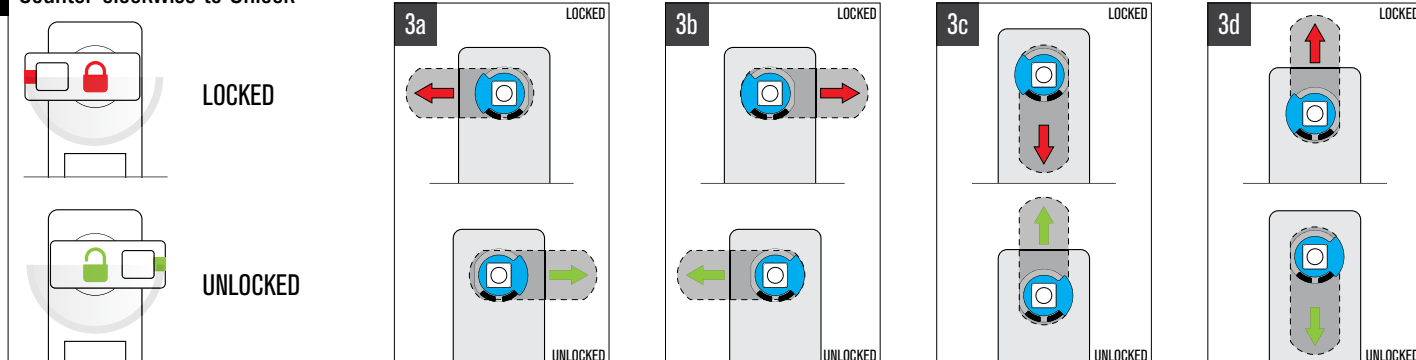


2 Counter-clockwise to Unlock

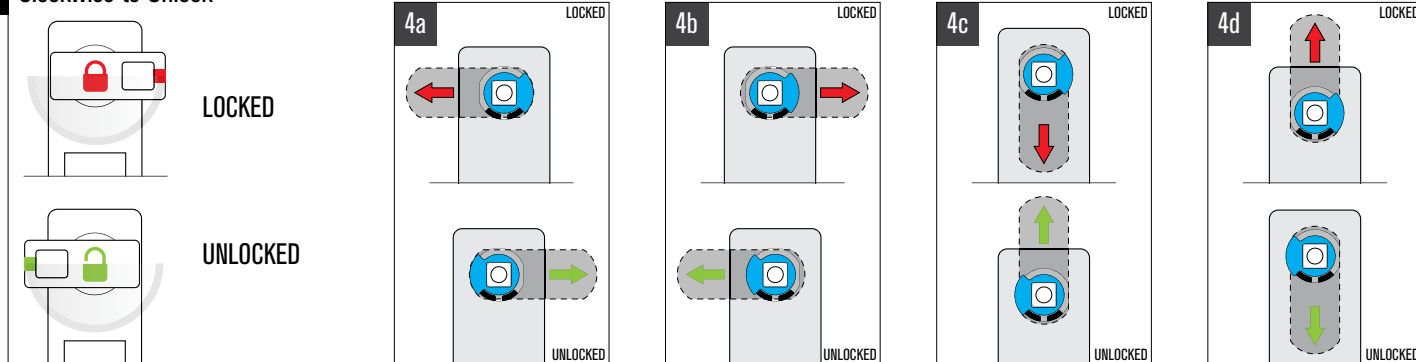


180° Knob Rotation

3 Counter-clockwise to Unlock

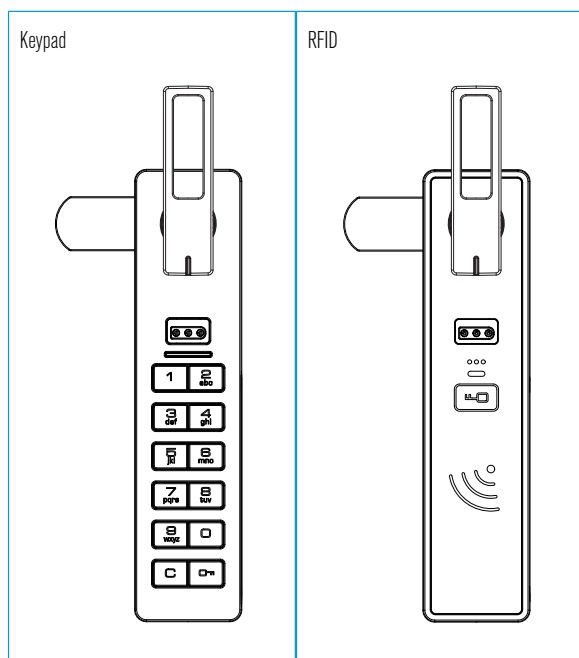


4 Clockwise to Unlock

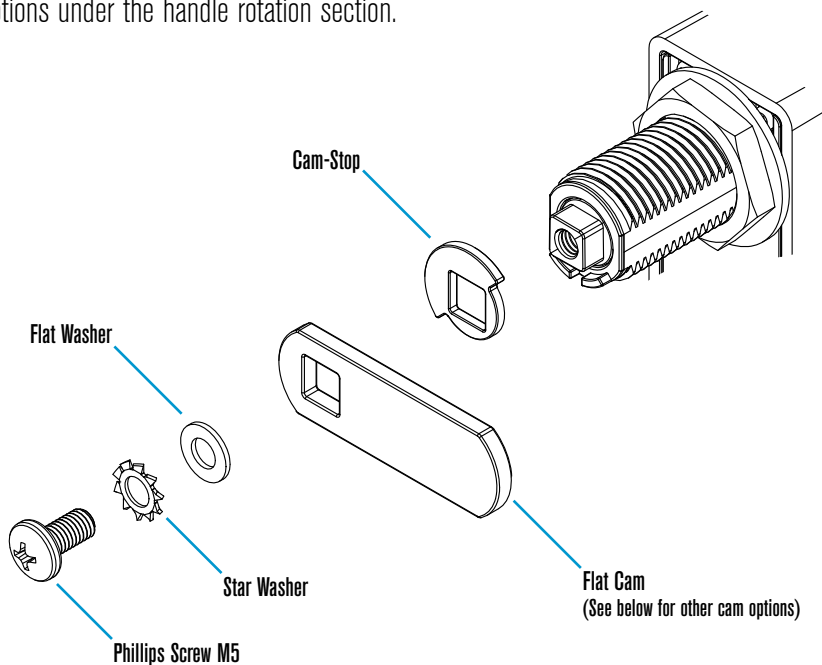


Vertical - ADA Handle on Top

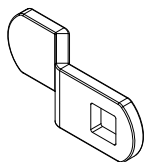
Example shows Configuration 2b. See other configuration options under the handle rotation section.



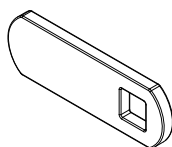
Shown in the locked position.



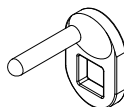
Cam Options



Offset Cam



Flat Cam



Lifter Cam

Cam-Stop Options

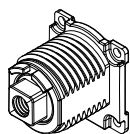


90° Cam-Stop

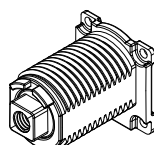


180° Cam-Stop

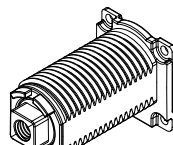
Cylinder Length Options



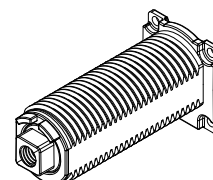
16mm



22mm



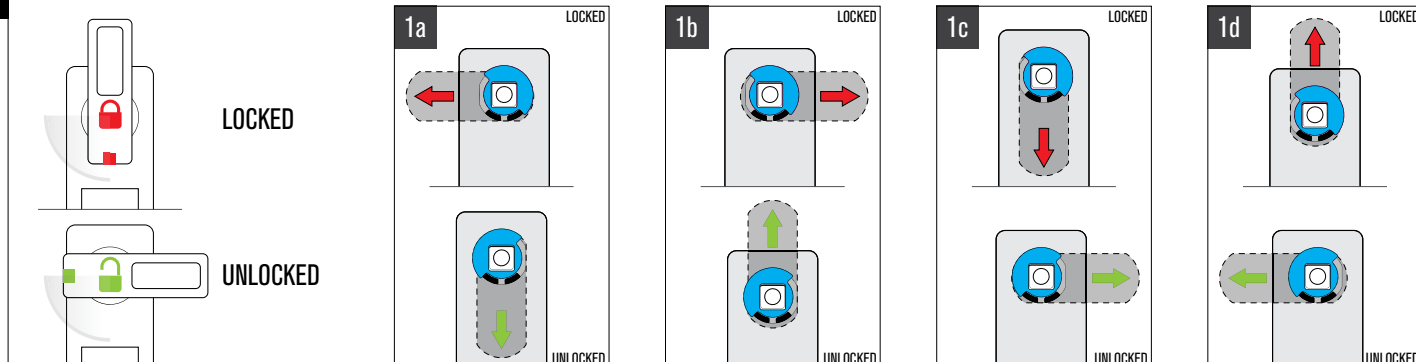
30mm (Standard)



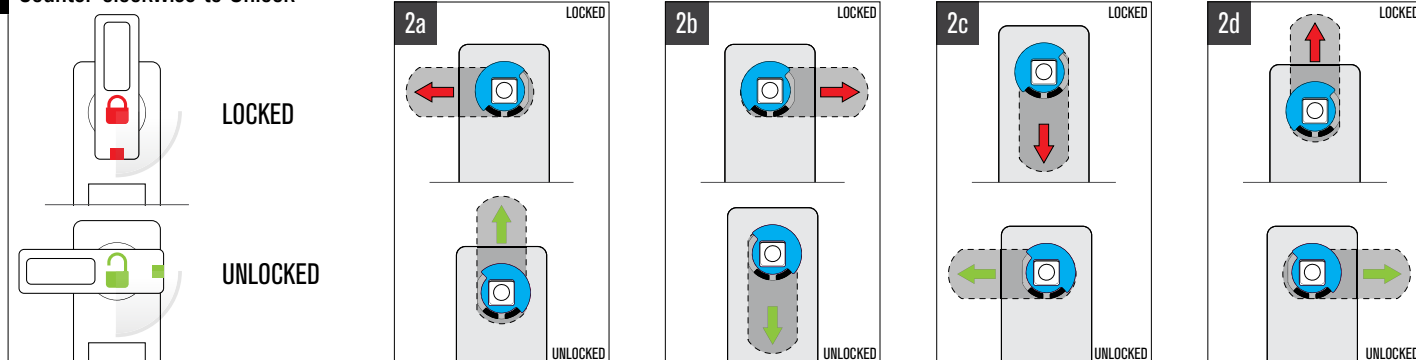
38mm

90° ADA Handle Rotation

1 Clockwise to Unlock

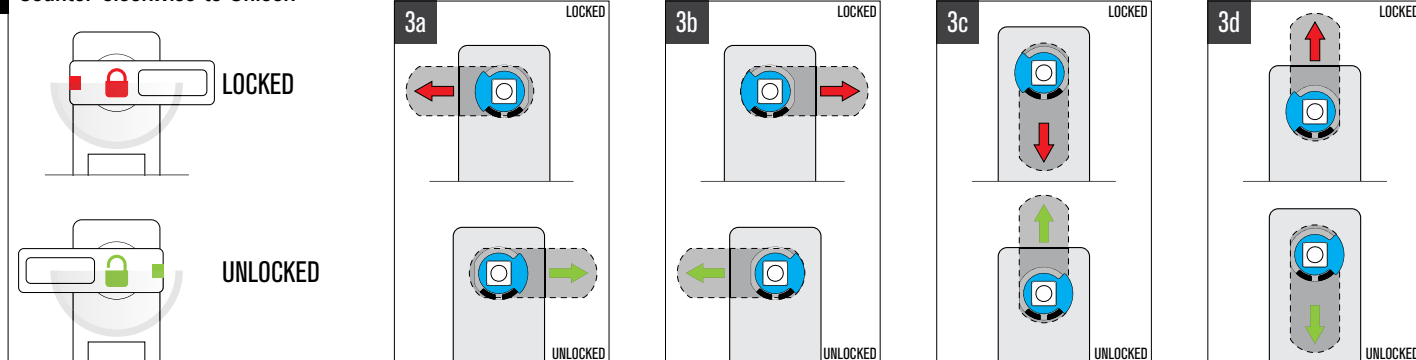


2 Counter-clockwise to Unlock

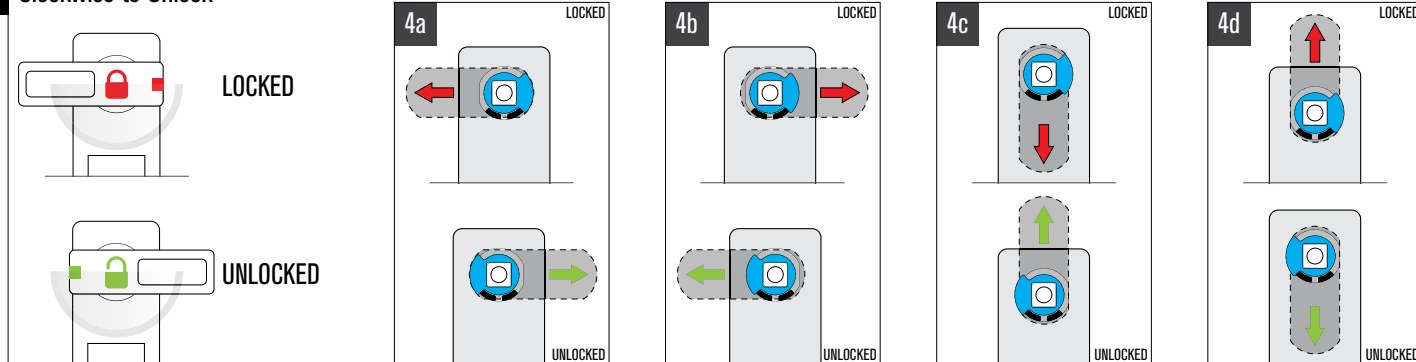


180° ADA Handle Rotation

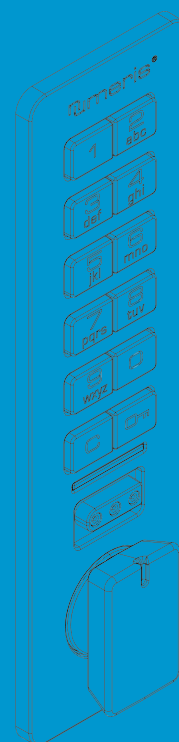
3 Counter-clockwise to Unlock



4 Clockwise to Unlock



Digilock[®]
security simplified[®]



support@digilock.com