

Everly Five Drawer Dresser

URBAN OUTFITTERS

Assembly Instructions

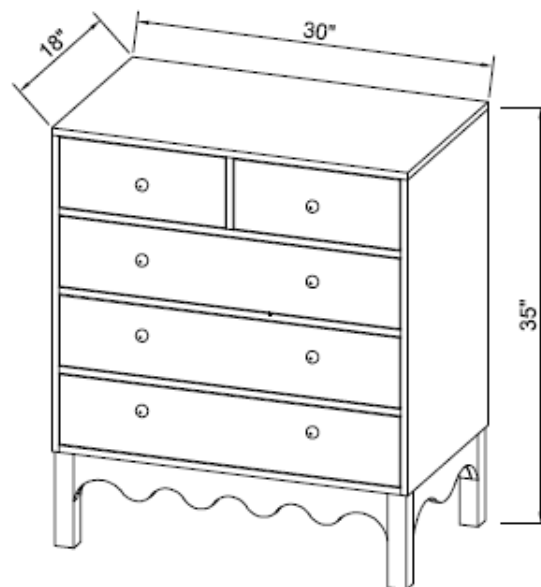
NO ADDITIONAL TOOLS REQUIRED

WARNINGS:

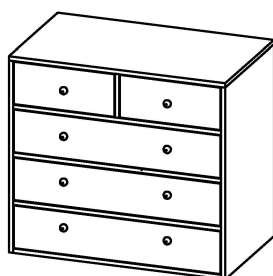
Do not throw away packing materials and carton until after assembly.
Ensure all parts are present prior to assembly.
Contact customer service immediately if parts are missing.
Assemble all parts on a clean smooth surface.

CARE INSTRUCTIONS:

Avoid direct exposure to sunlight.
Do not place over heat or air conditioning vents.
Adjust levelers so that the furniture sits flat on uneven floors.
Blot spills with a clean white cloth, do not rub.
Do not use harsh chemicals.
Before cleaning any part test a small spot in a hidden area.
You may need to re-tighten all bolts after initial use.



PARTS INCLUDED



(A) DRESSER
x1



(B) SIDE
x2



(C) LEGS
x2



(D) ROUND HEAD ALLEN BOLT
[M6 X 35MM] x16



(E) WASHER
[M6 X 20MM] x16



(F) ALLEN KEY
[4MM] x1

EXCLUSIVE AND CONFIDENTIAL PROPERTY OF URBAN OUTFITTERS, INC.

© 2017 UO, Inc. All rights reserved, including all applicable copyright, design and patent rights.
Any unauthorized reproduction, adaptation, distribution or other infringement will be prosecuted.

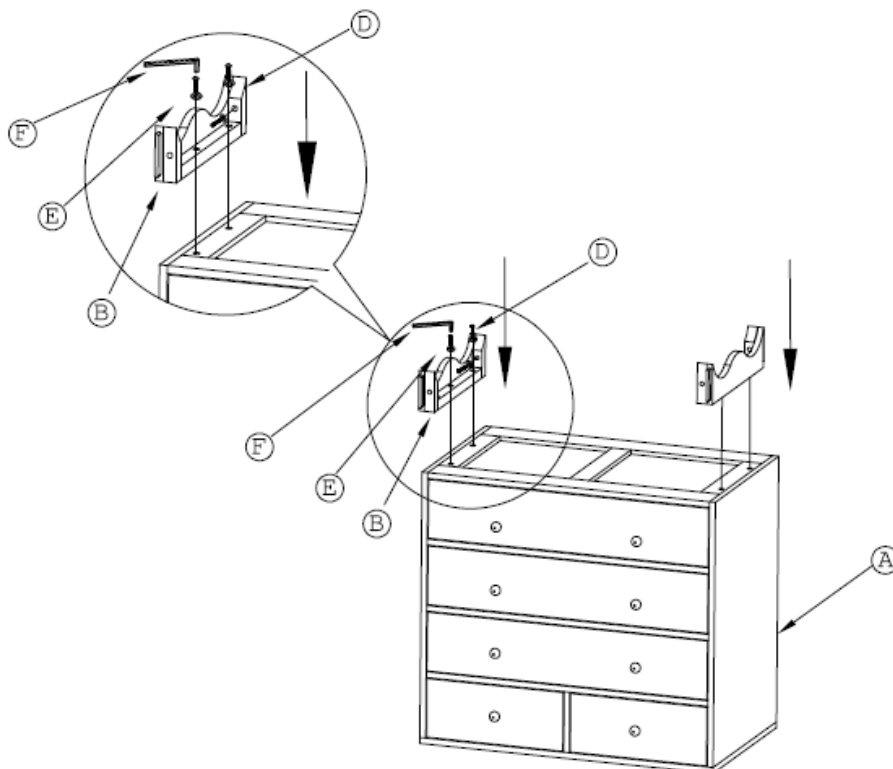
Everly Five Drawer Dresser

URBAN OUTFITTERS

Assembly Instructions

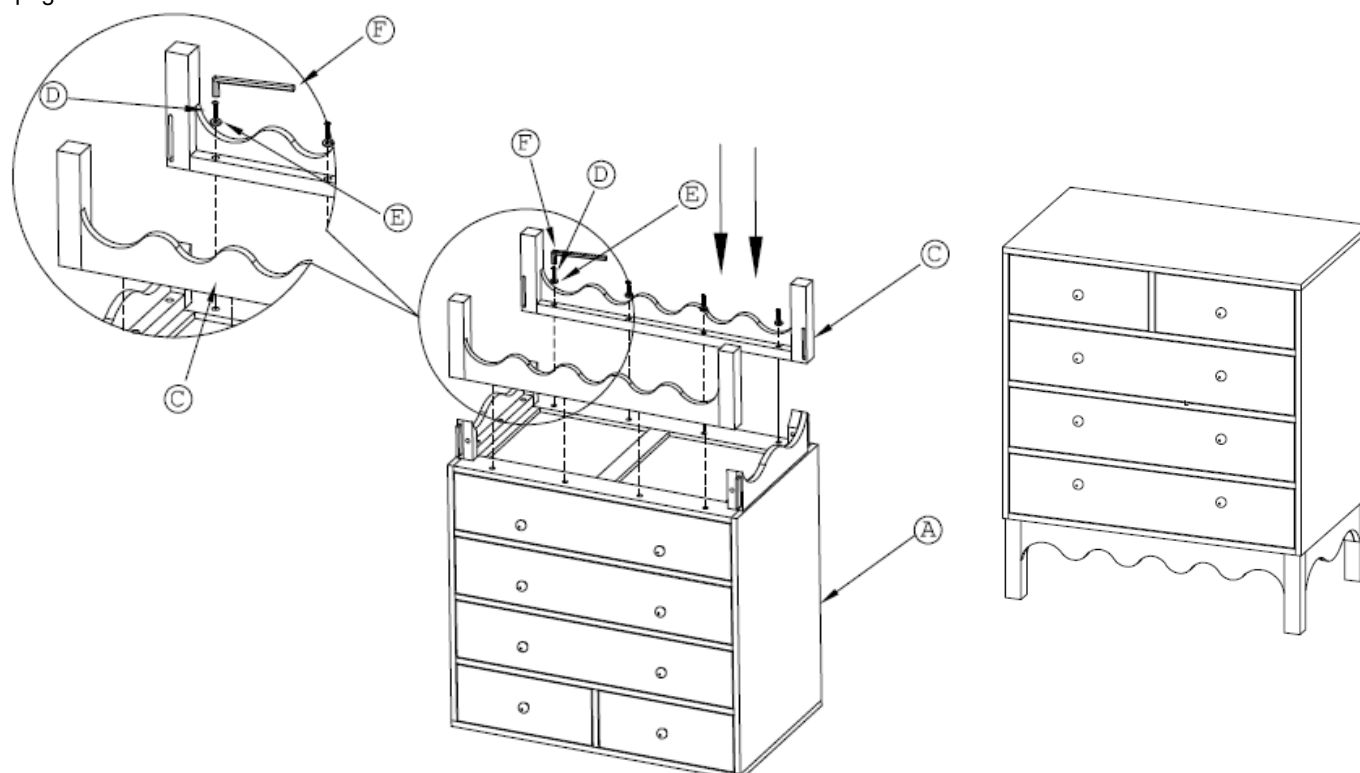
STEP 1

With help, lay the dresser (A) over onto a clean smooth surface. Align the sides (B) with the sides of the dresser (A) and insert the bolts (D) and washer (E) as shown. Partially tighten the bolts (D) with the Allen key (F).



STEP 2

Align the legs (C) with the front and back of the dresser (A) and insert the bolts (D) and washer (E) as shown. Partially tighten the bolts (D) with the Allen key (F). Once all bolts are partially tightened, fully tighten the bolts. With help, flip the dresser (A) upright.



Anti-Tip Kit Instructions

URBAN OUTFITTERS

Assembly Instructions

TOOLS REQUIRED BUT NOT INCLUDED:

Drill, Phillips head screwdriver, Hammer, Pencil

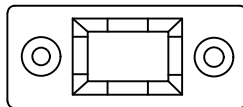
WARNINGS:

Children may be injured by the tipping of furniture, and the use of the Anti-Tip Kit is highly recommended. This Anti-Tip Kit is only a deterrent; it is not a substitute for proper adult supervision. The manufacturer and retailer assume no liability for improper installation or excess loads placed on screws, brackets, or straps. When properly installed, this restraint provides protection against unexpected tipping of furniture. This Anti-Tip Kit **MUST** be installed into the wall using proper mounting hardware **OR** into a wall stud using appropriate screws. The position of the Anti-Tip Kit depends on the product and the location of the wall studs. The included hardware is intended for attachment to drywall or wooden studs, contact your local hardware store to find the correct anchor for alternative wall-types such as stone or brick.

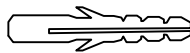
PARTS INCLUDED:



(A) Nylon strip
x2



(B) Bracket
x4 total
(x2 pre-attached)



(C) Anchor
[6mm x 38mm] x4



(D) Wall Screw
[6mm x 35mm] x4



(E) Drywall Screw
[4mm x 16mm]
x4 pre-attached

STEP 1

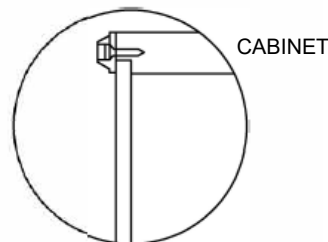
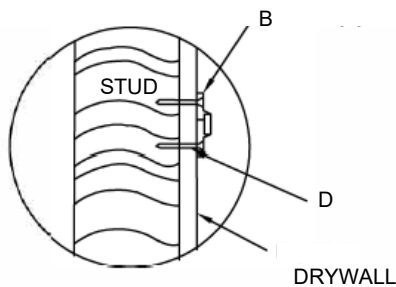
It is recommended to locate wood studs within your wall to attach the anti-tip brackets (B). With help, place the cabinet against the wall in a preferred location. Place the anti tip brackets (B) on the wall in line with the anti-tip brackets attached to the back of the cabinet. Mark the location of the holes in the anti tip bracket (B) on the wall. With help, move the cabinet back away from the wall.

Wood or Stud Installation:

Insert screws (D) through the anti-tip bracket (B) into the wall and tighten with a Phillips head screwdriver or drill.

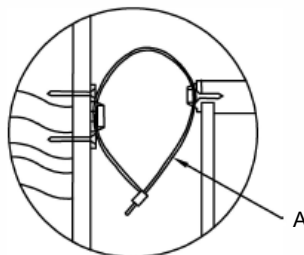
Drywall Installation:

Attach the drywall anchor (C) to the wall at the marked location using a drill and hammer. Insert screw (D) through the anti-tip bracket (B) into the drywall anchor (C) and tighten with a Phillips head screwdriver.



STEP 2

With help, move the cabinet back against the wall in line with the anti tip brackets (B). Feed the Nylon strap (A) through the anti-tip brackets (B) then, pull the nylon strap tight.



STEP 3

Adjust the levelers as necessary to accommodate uneven floors.

EXCLUSIVE AND CONFIDENTIAL PROPERTY OF URBAN OUTFITTERS, INC.

© 2017 UO, Inc. All rights reserved, including all applicable copyright, design and patent rights.

Any unauthorized reproduction, adaptation, distribution or other infringement will be prosecuted.