

Corner Rattan Shelf

URBAN OUTFITTERS

Assembly Instructions

TOOLS REQUIRED BUT NOT INCLUDED:

Screwdriver, Drill, Hammer, Pencil

WARNINGS:

Do not throw away packing materials and carton until after assembly.

Ensure all parts are present prior to assembly.

Contact customer service immediately if parts are missing.

Assemble all parts on a clean smooth surface.

CARE INSTRUCTIONS:

Avoid direct exposure to sunlight.

Do not place over heat or air conditioning vents.

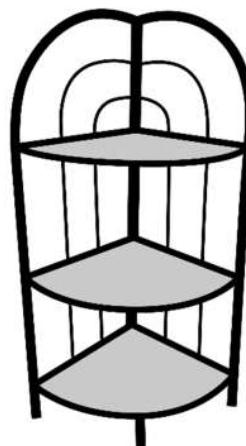
Adjust levelers so that the furniture sits flat on uneven floors.

Blot spills with a clean white cloth, do not rub.

Do not use harsh chemicals.

Before cleaning any part test a small spot in a hidden area.

You may need to re-tighten all bolts after initial use.



[11.8"x11.8"x32.7"]

or

[30cm x 30cm x 83 cm]

PARTS INCLUDED:



(A) Corner Shelf

[11.8"x11.8"x32.7H "] x 1

or

[30cmx30cmxH83 cm] x 1

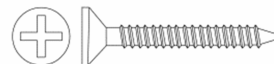


(B) Tie

[7.87 "] x 1

or

[200 mm] x 1

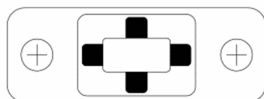


(C) Screw

[D 0.31 / 0.16 x 1.18 "] x 2

or

[D 8/4mm x 30 mm] x 2

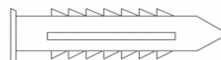


(D) Bracket

[1.77"x0.79"] x 2

or

[45mmx20 mm] x2



(E) Plastic Anchor

[D 0.35 " x 1.18"] x 2

or

[D 9mm x 30mm] x2

Corner Rattan Shelf

Assembly Instructions

URBAN OUTFITTERS

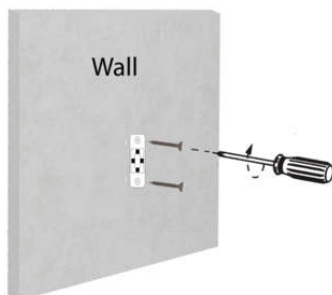
STEP 1

Place the Corner Shelf (A) in position at a corner. Place the loose bracket (D) against the wall directly behind the dresser.

STEP 2

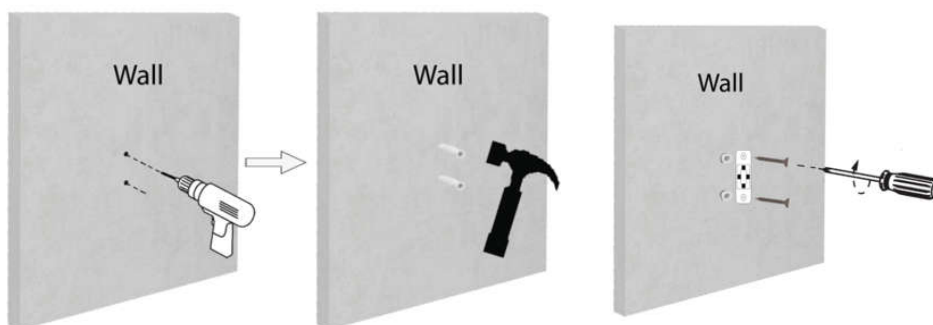
A) Wood or Stud installation:

Insert the screws (C) through the bracket (D). Then, use a Phillips head screwdriver (not included) to fasten the screws (C) directly into the wall at the marked location.



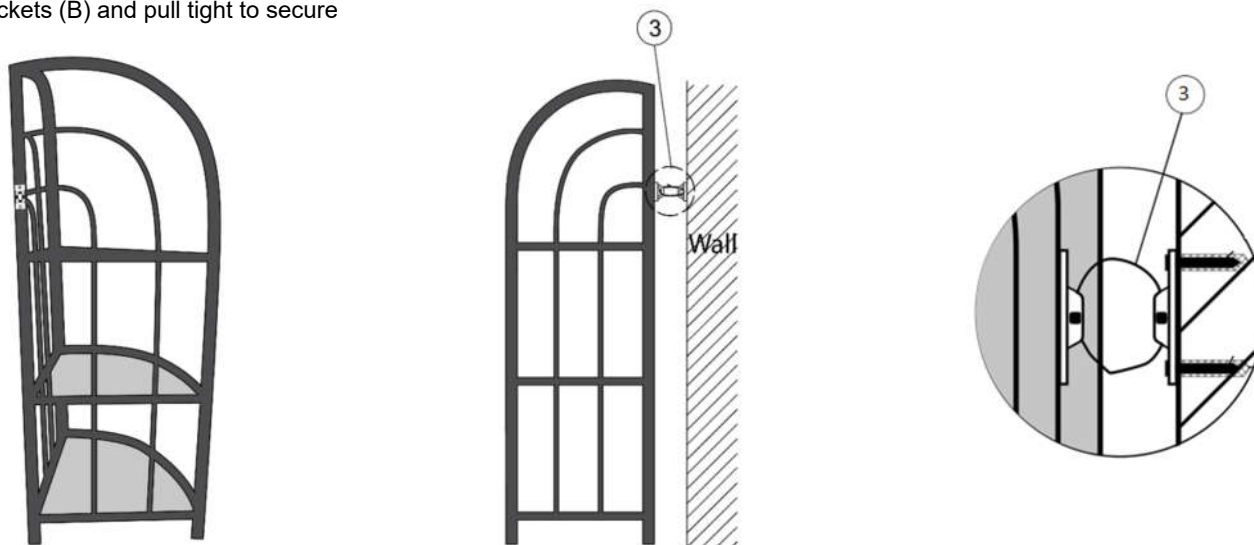
Drywall Installation:

Mark the location of the screw holes in the bracket (D) on the wall. Remove the bracket (D) and pre-drill holes for the anchors (E) using a drill (not included) at the marked locations then, insert the anchors into the wall using a hammer (not included). Insert the screws (C) through the bracket (D) and into the anchors, then tighten with a Phillips head screwdriver (not included).



STEP 3

Place the Corner Shelf (A) against the wall aligning the brackets (B), then run the Strap (A) through both brackets (B) and pull tight to secure



The included hardware is intended for attachment to drywall or wooden wall surfaces, contact your local hardware store to find the correct anchor for alternative wall-types such as stone or brick.