

Sable Headboard

URBAN OUTFITTERS

Assembly Instructions

TOOLS REQUIRED BUT NOT INCLUDED:

Drill, Phillips head screwdriver driver, Pencil, Level

WARNINGS:

Do not throw away packing materials and carton until after assembly.

Ensure all parts are present prior to assembly.

Contact customer service immediately if parts are missing.

Assemble all parts on a clean smooth surface.

CARE INSTRUCTIONS:

Avoid direct exposure to sunlight.

Do not place over heat or air conditioning vents.

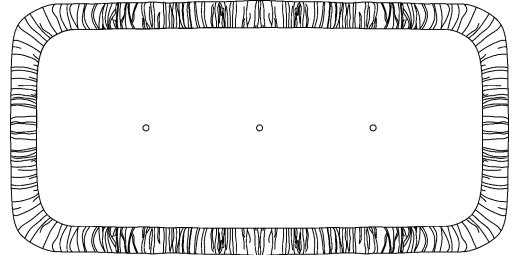
Adjust levelers so that the furniture sits flat on uneven floors.

Blot spills with a clean white cloth, do not rub.

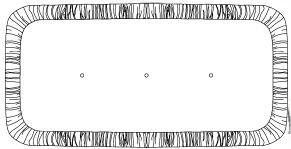
Do not use harsh chemicals.

Before cleaning any part test a small spot in a hidden area.

You may need to re-tighten all bolts after initial use.



PARTS INCLUDED:



(A) Headboard



(B) Cleat



(C) Screw
[D 3.5 x 40 mm] x9



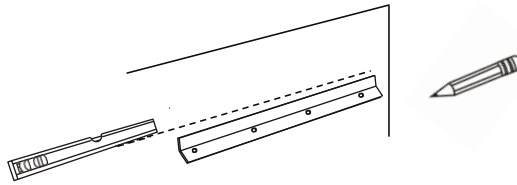
(D) Plastic Anchor
[D 4 x 30mm] x9

Sable Headboard

URBAN OUTFITTERS

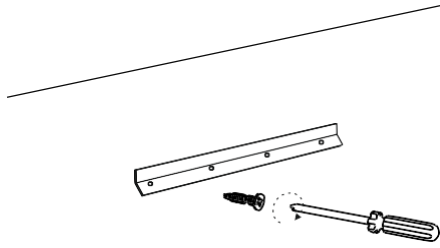
Assembly Instructions

- STEP 1** Place the cleat (B) on the wall in its desired location and ensure it is level. Mark the location of the mounting holes in the cleat (B) on the wall with a pencil, then remove it from the wall.



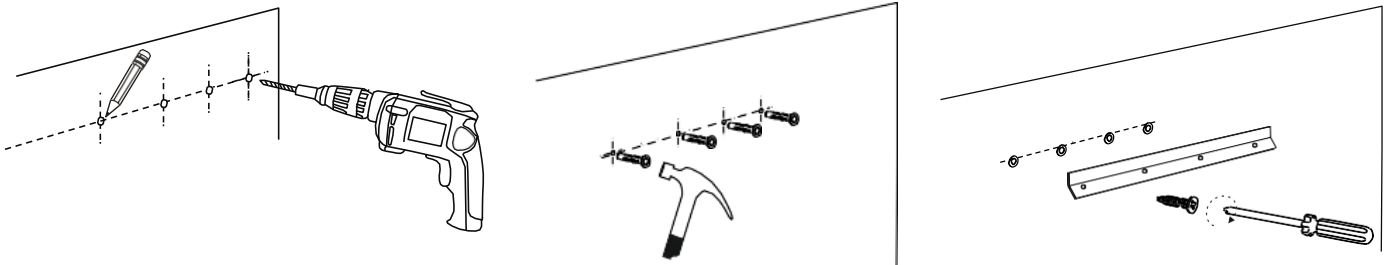
Stud installation:

Drill a 1/8" or 3mm hole in the wall at the marked locations. Fasten the cleat (B) directly to the holes in the wall with screws (C) using a Phillips head screwdriver or drill.



Drywall installation:

Drill a 5/32" or 4mm hole in the wall in the marked locations. Insert the plastic anchors (D) into the wall at the marked location using a hammer then, Fasten the cleat (B) directly to the plastic anchors (D) with screws (C) using a Phillips head screwdriver or drill.



The included hardware is intended for attachment to drywall or wooden wall surfaces, contact your local hardware store to find the correct anchor for alternative wall-types such as stone or brick.

STEP 2

With help hang, the headboard (A) onto cleat (B) to complete assembly.

