

Tile Multi-Hooks

URBAN OUTFITTERS

Assembly Instructions

TOOLS REQUIRED BUT NOT INCLUDED:

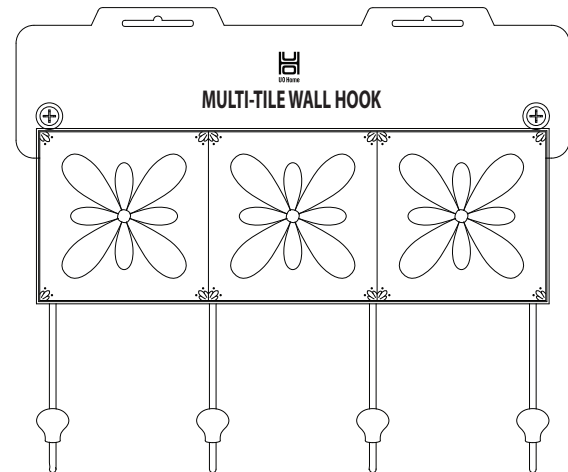
Drill, Phillips head screwdriver driver or bit, Hammer, Pencil, Level

WARNINGS:

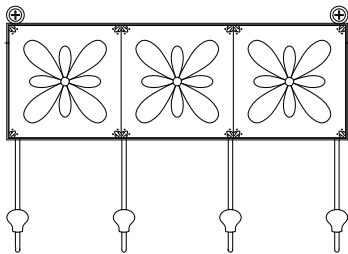
Do not throw away packing materials and carton until after assembly. Ensure all parts are present prior to assembly. Contact customer service immediately if parts are missing. Assemble all parts on a clean smooth surface.

CARE INSTRUCTIONS:

Avoid direct exposure to sunlight.
Blot spills with a clean, white cloth; do not rub.
Do not use harsh chemicals.
Before cleaning any part, test a small spot in a hidden area.
Do not place over heat or air conditioning vents.
Do not over-tighten the parts.
The parts may loosen after initial use; re-tighten as necessary.



PARTS INCLUDED:



(A) Multi - hook



(B) Screws
[M6 x 32mm] x2



(C) Plastic Anchors
[M10 x 38mm] x2

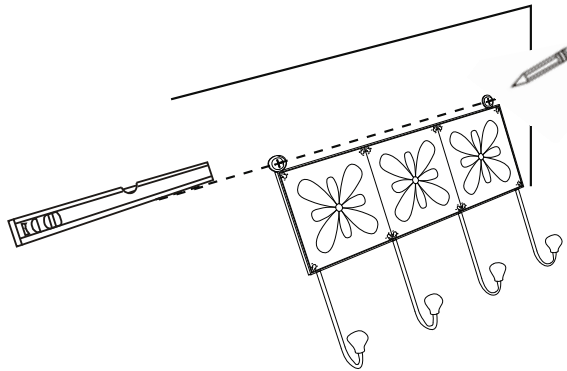
Tile Multi-Hooks

URBAN OUTFITTERS

Assembly Instructions

STEP 1

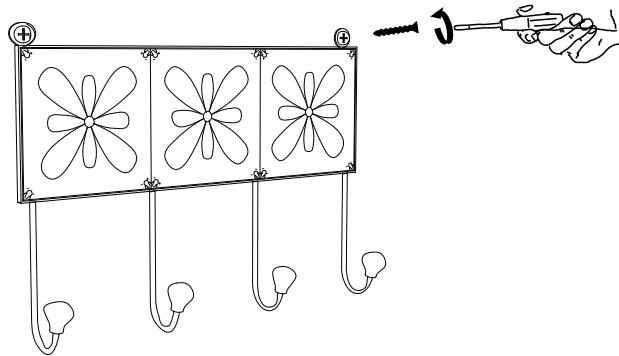
Place the multi-hook (A) on the wall in a chosen location and ensure it is level. Mark the location of the mounting holes in the multi-hook (A) on the wall with a pencil, then remove it from the wall.



STEP 2

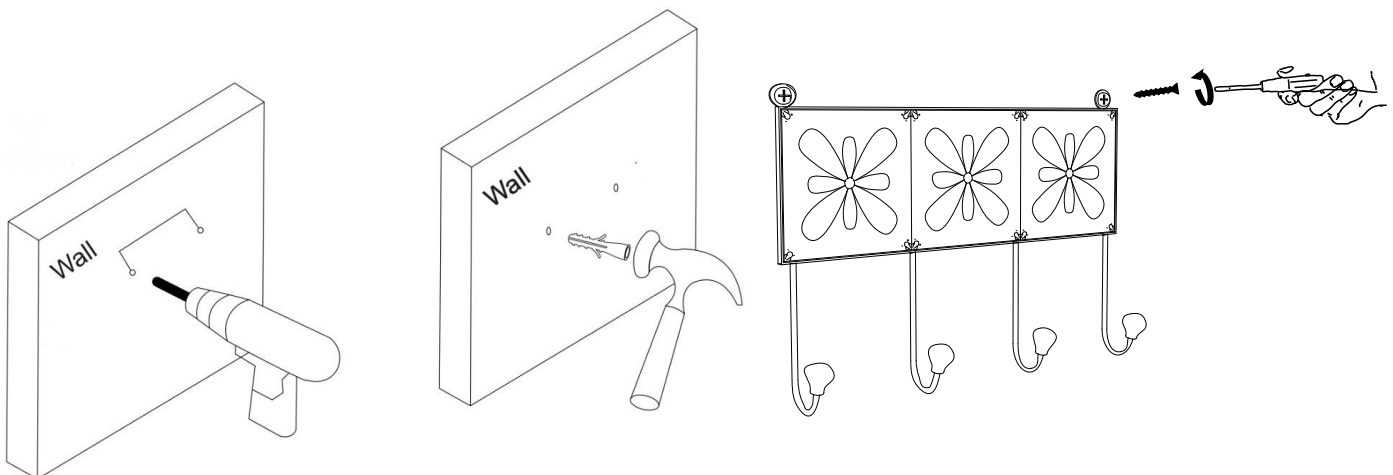
Wood or Stud installation:

Drill a 1/8" or 3mm hole in the wall at the marked locations. Insert the screws (C) through the multi-hook (A) into the wall and fasten them with a Phillips head screwdriver or drill.



Drywall installation:

Drill a 5/16" or 8mm hole in the wall in the marked location. Insert the plastic anchors (C) into the wall at the marked location using a hammer. Insert screws (B) through the multi-hook (A) into the anchors, then tighten with a Phillips head screwdriver.



The included hardware is intended for attachment to drywall or wooden wall surfaces, contact your local hardware store to find the correct anchor for alternative wall-types such as stone or brick.