

CASTELLA MIRROR

Assembly Instructions

URBAN OUTFITTERS

TOOLS REQUIRED BUT NOT INCLUDED:

Do not throw away packing materials and carton until after assembly.

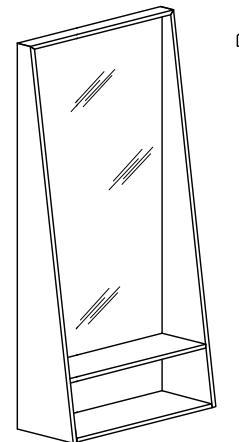
Assemble all parts on a clean smooth surface

CARE INSTRUCTIONS:

Avoid direct exposure to sunlight. Do not place over heat or Air conditioning vents. Adjust levelers so that the furniture sits flat on uneven floors.

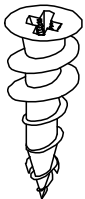
Blot spills do not rub, with a clean white cloth. Do not use harsh chemicals.

Before cleaning any part test a small spot in a hidden area. You may need to re-tighten all bolts after initial use.



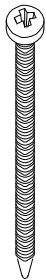
PARTS INCLUDED

C



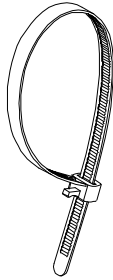
4 X

D



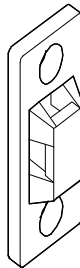
4 X

E



4 X

F



2X

G

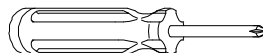


3x32mm 2X

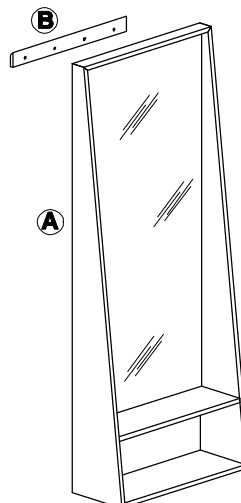
H



3x19mm 2X



Philips Screwdriver (Not included)



CASTELLA MIRROR

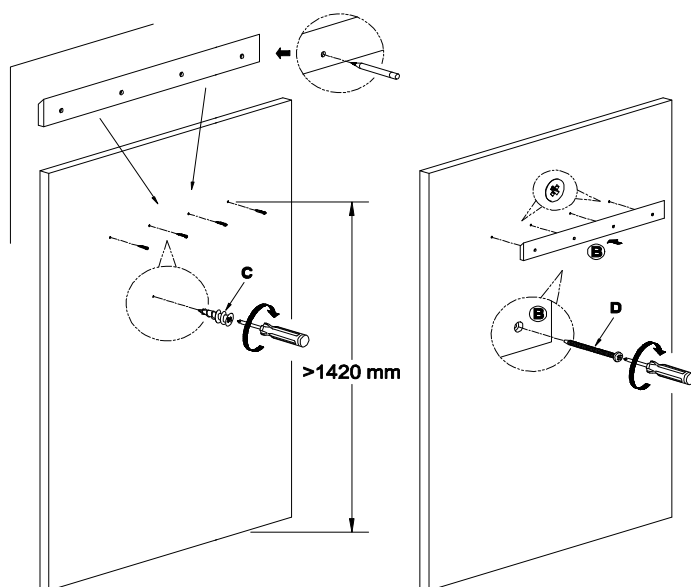
Assembly Instructions

URBAN OUTFITTERS

STEP 1

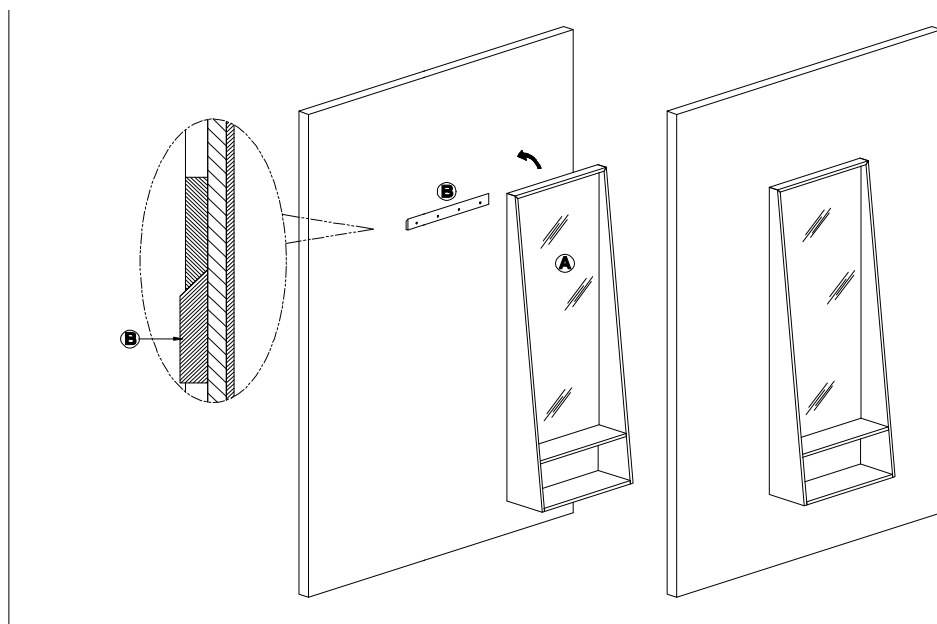
Align wooden french cleat (B) to wall. Mark the top of the mirror with a pencil. Measure the center of the mirror. The distance to the hole location is 56" or 1420 mm from the floor. Measure and mark these 4 spots. It is best to use a level to make sure the mirror hangs square.

Insert anchors (C) and screw them into the wall flush. Screw in the screws (D) with a Phillips head screw- driver (not included).



STEP 2

With help hang the mirror onto wooden french cleat (B).



STEP 3

To prevent injury and property damage from unexpected tipping of furniture.

1. Attached the mounting bracket horizontally to the top back edge of the furniture. Insert the short screws through the holes in the bracket and tighten securely using screwdriver. Please contact your local hardware store to get the correct anchor for your wall type.
2. Determine where the furniture is to be placed and mark location on the wall for the other mounting bracket crew holes. It should be placed approximately 2" below the bracket mounted to the furniture.
3. Attached the mounting bracket vertically to the wall by inserting the long screws provided through the hole in the bracket and tightening securely using screwdriver. Please contact your local hardware store to get the correct anchor for your wall type.
4. Place the furniture so the bracket on the back edge are in line with the brackets on the wall.
5. Lace an end of the nylon restraint strap down through each bracket. Bring both ends together and slide the thin end of the strap through the receiving end of the strap until snug.
6. Check to make sure the strap is securely laced and locked to the bracket.

