

TOPO BOOKHELF

Assembly Instructions

URBAN OUTFITTERS

TOOLS REQUIRED BUT NOT INCLUDED:

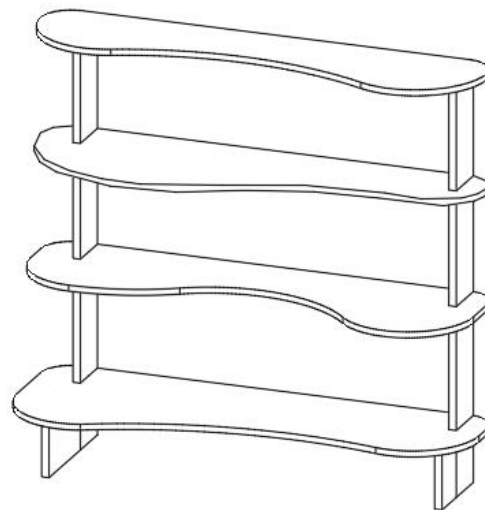
Do not throw away packing materials and carton until after assembly. Assemble all parts on a clean smooth surface

CARE INSTRUCTIONS:

Avoid direct exposure to sunlight. Do not place over heat or Air conditioning vents. Adjust levelers so that the furniture sits flat on uneven floors.

Blot spills do not rub, with a clean white cloth. Do not use harsh chemicals.

Before cleaning any part test a small spot in a hidden area. You may need to re-tighten all bolts after initial use.



PARTS INCLUDED



(A) LEG A 1X
1X



(B) LEG B 1X



(C) SHELF C 1 X



(D) SHELF D 1 X



(E) SHELF E 1 X



(F) SHELF F



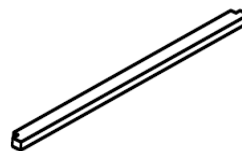
(G) ALL EN BOLT
[M6X 35 MM 18 X]



(H) ALL EN BOLT
[M6 X 60MM 4 X]



(I) WASHER
[M6 X 15MM 22X]

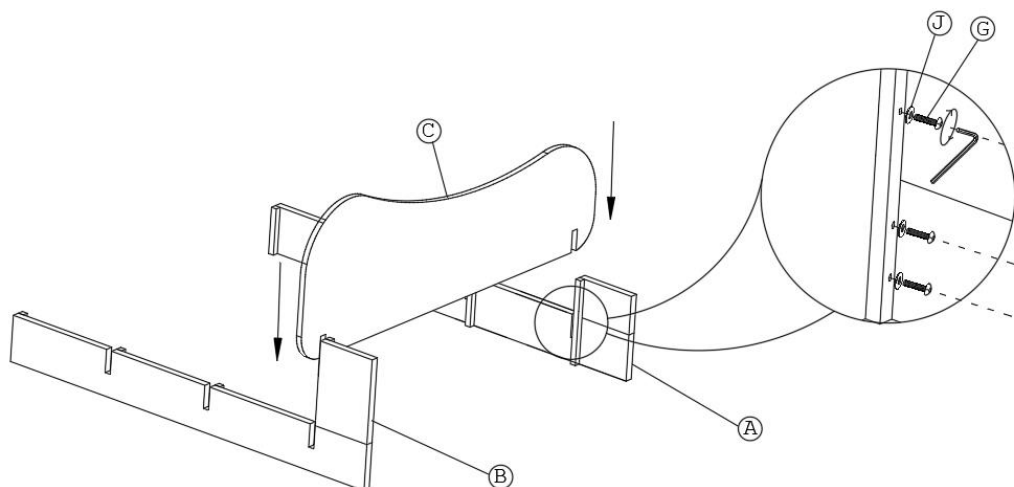


(J) LEG SUPPORT 1 X

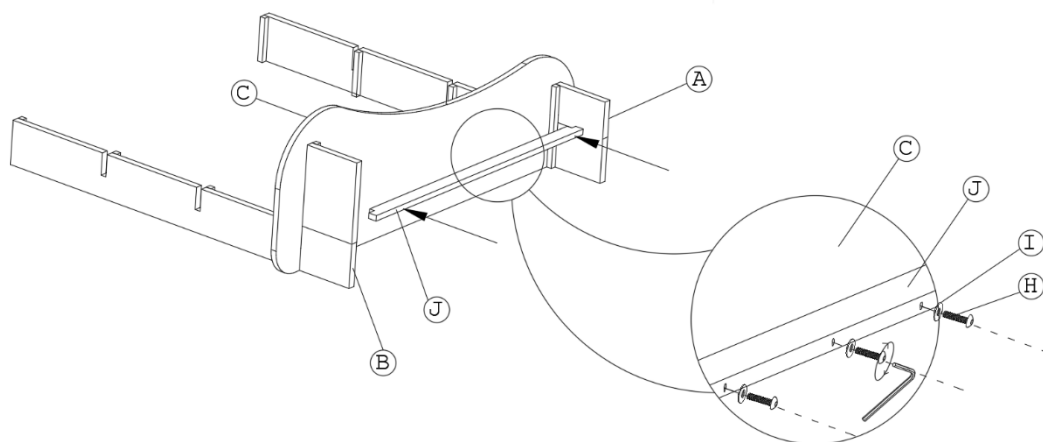


(K) ALLEN KEY(4MM) 1X

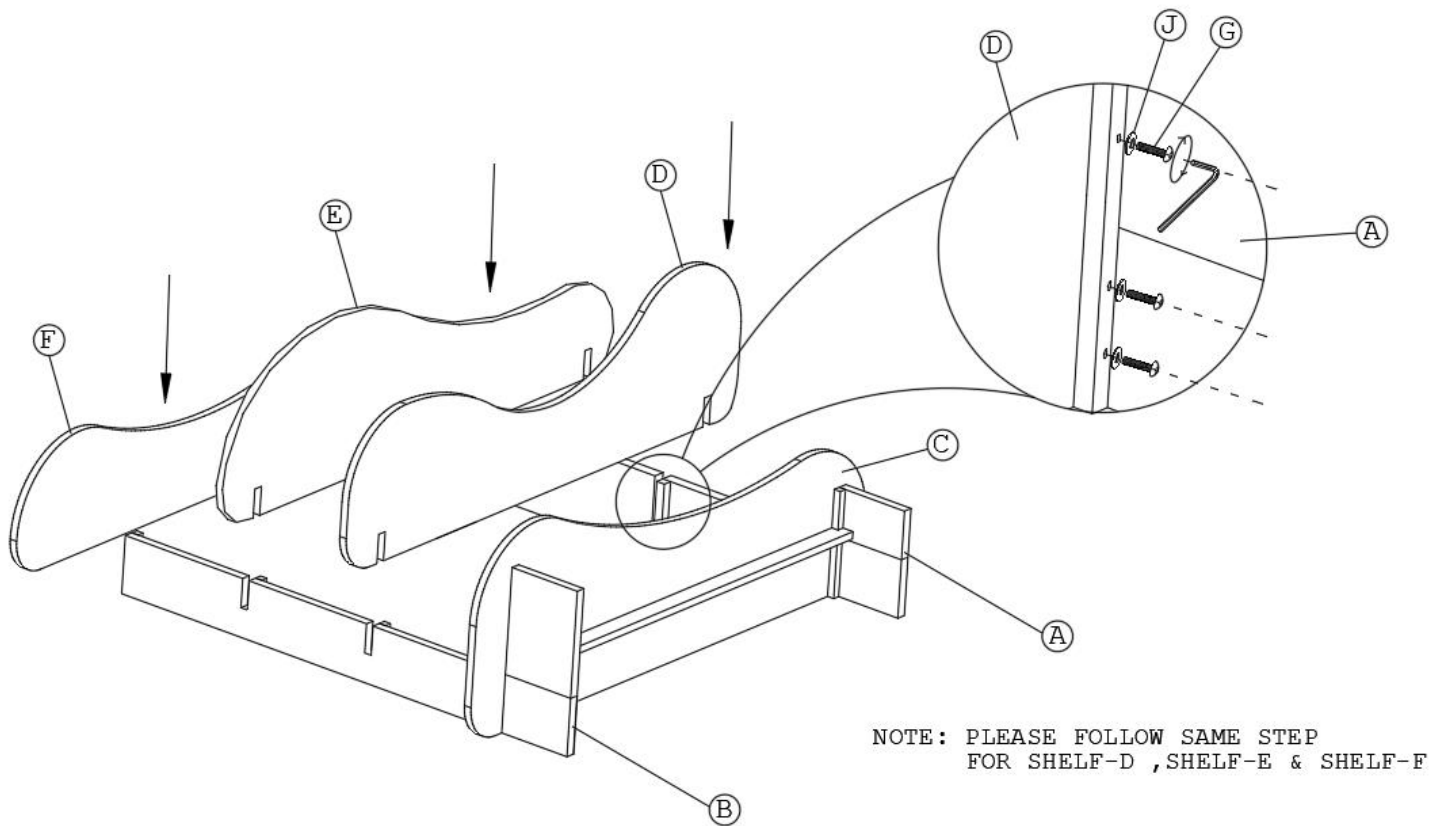
STEP 1



STEP 2



STEP 3



FINAL

