

Frameless Mirror

URBAN OUTFITTERS

Assembly Instructions

TOOLS REQUIRED BUT NOT INCLUDED:

Drill, Phillips head screwdriver driver, Pencil, Level

WARNINGS:

Do not throw away packing materials and carton until after assembly.

Ensure all parts are present prior to assembly.

Contact customer service immediately if parts are missing.

Assemble all parts on a clean smooth surface.

CARE INSTRUCTIONS:

Avoid direct exposure to sunlight.

Do not place over heat or air conditioning vents.

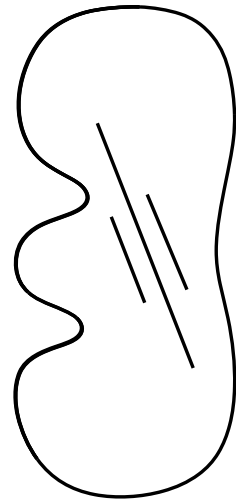
Adjust levelers so that the furniture sits flat on uneven floors.

Blot spills with a clean white cloth, do not rub.

Do not use harsh chemicals.

Before cleaning any part test a small spot in a hidden area.

You may need to re-tighten all bolts after initial use.



50.75" H x 23" W x 1"D

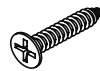
PARTS INCLUDED:



(A) Mirror
x1



(B) Wall Anchor
[16x7x35 mm] x4



(C) Machine Screw
[8x8x32 mm] x4



(D) Cleat
x1

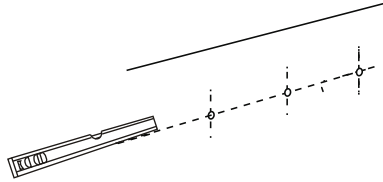
Frameless Mirror

URBAN OUTFITTERS

Assembly Instructions

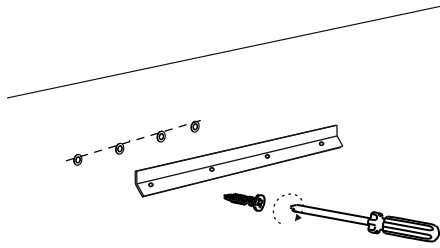
STEP 1

Place the cleat (D) on the wall in its desired location and ensure it is level.



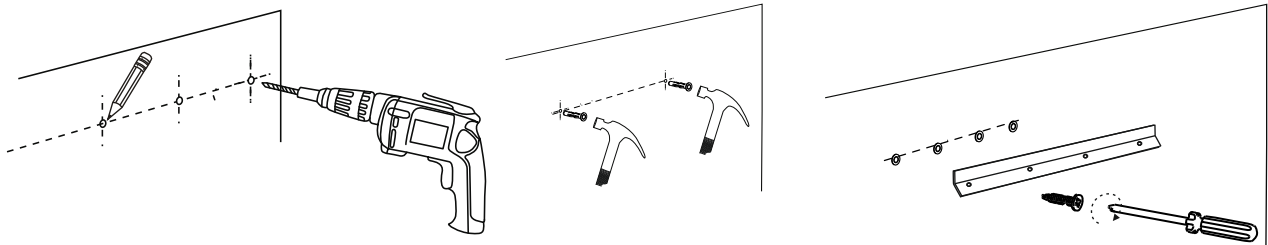
Wood or Stud installation:

Fasten the cleat (D) directly to the wall with screws (C) using a Phillips head screwdriver (not included).



Drywall installation:

Mark the location of the screw holes in the cleat (D) on the wall. Insert anchors (B) into the wall at the marked locations using a drill and a hammer (not included). Insert screws (A) through cleat (D) and into the anchors, then tighten with a Phillips head screwdriver (not included).



The included hardware is intended for attachment to drywall or wooden wall surfaces, contact your local hardware store to find the correct anchor for alternative wall-types such as stone or brick.

STEP 2

With help hang, the mirror (C) onto cleat (D) to complete assembly.

