

Clara Bed - Full

Assembly Instructions

URBAN OUTFITTERS

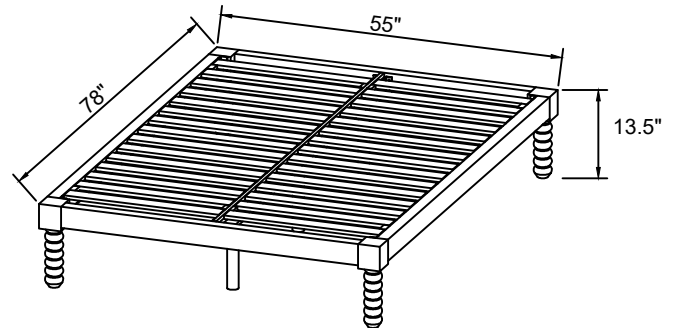
NO ADDITIONAL TOOLS REQUIRED:

WARNINGS:

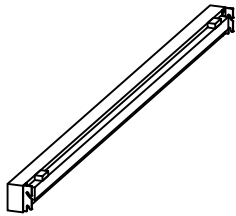
Do not throw away packing materials and carton until after assembly.
Ensure all parts are present prior to assembly.
Contact customer service immediately if parts are missing.
Assemble all parts on a clean smooth surface.

CARE INSTRUCTIONS:

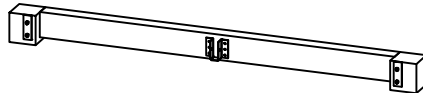
Avoid direct exposure to sunlight.
Do not place over heat or air conditioning vents.
Adjust levelers so that the furniture sits flat on uneven floors.
Blot spills with a clean white cloth, do not rub.
Do not use harsh chemicals.
Before cleaning any part test a small spot in a hidden area.
You may need to re-tighten all bolts after initial use.



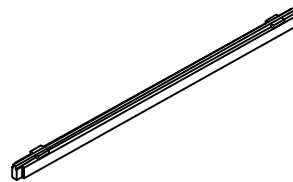
PARTS INCLUDED:



(A) SIDE RAIL
x2



(B) FOOTBOARD
x2



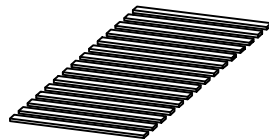
(C) CENTER SUPPORT
x1



(D) LEGS
x4



(E) CENTER LEGS
x3



(F) SLATS
x2



(G) BOLT
[M8 X 25MM]
x8



(H) BOLT
[M6 X 16MM]
x2



(I) ALLEN KEY
[4 MM]
x1



(J) ALLEN KEY
[5 MM]
x1

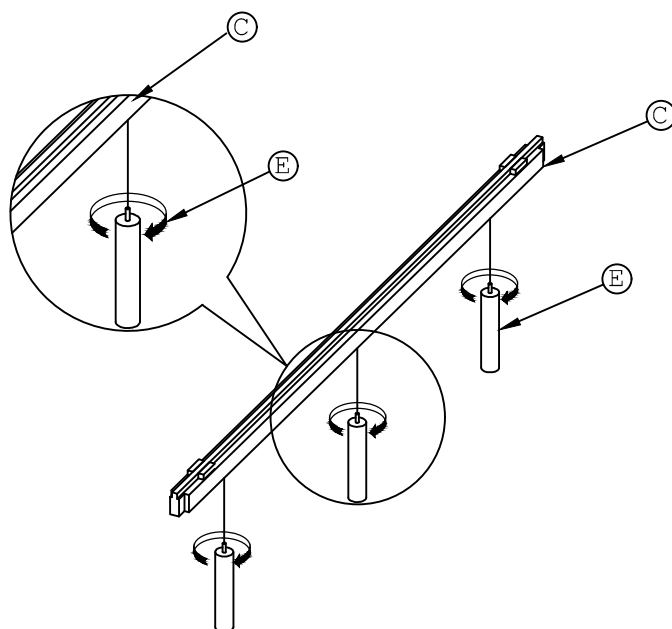
Clara Bed - Full

Assembly Instructions

URBAN OUTFITTERS

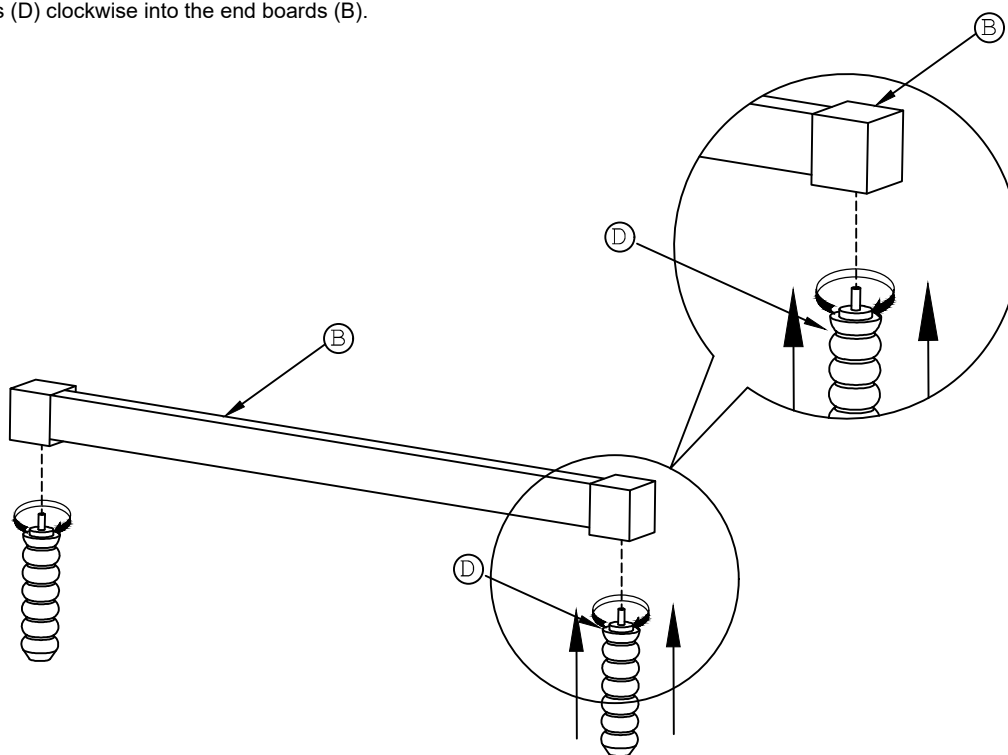
STEP 1

With help, lay all the parts over onto a clean smooth surface. Screw legs (E) clockwise into the center support (C). Do not over-tighten



STEP 2

Screw legs (D) clockwise into the end boards (B).



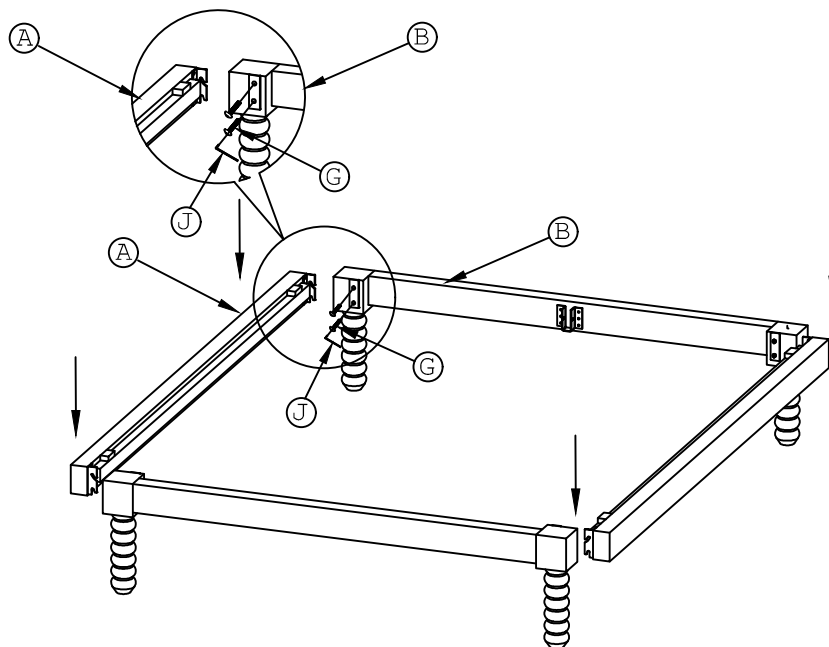
Clara Bed - Full

Assembly Instructions

URBAN OUTFITTERS

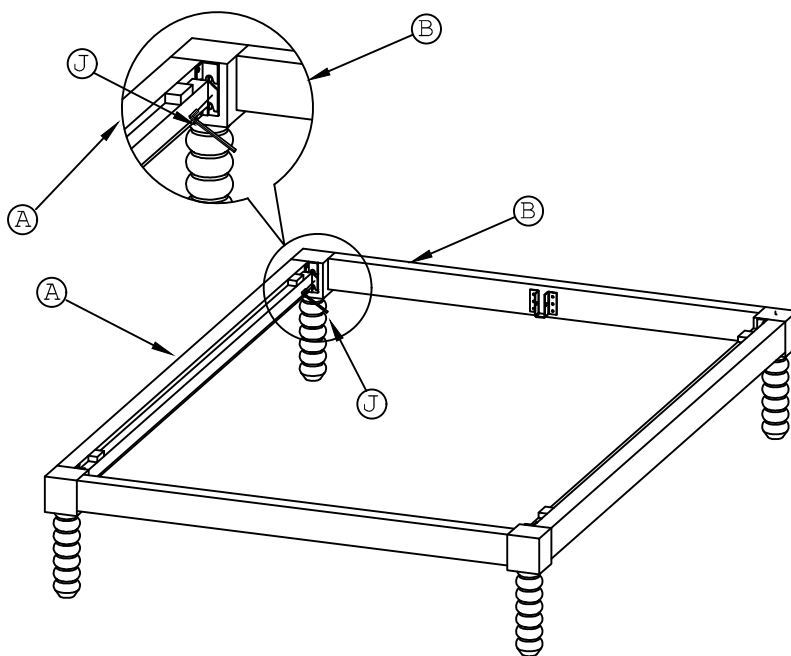
STEP 3

Partially screw the bolts (G) into the end boards (B) with Allen key (J). Use the hooks attached to the ends of the side rails (A) to hang them on the bolts (G) in the end boards (B).



STEP 4

Ensure the side rails (A) are seated on the bolts (G) then, tighten the bolts (G) with Allen key (J).



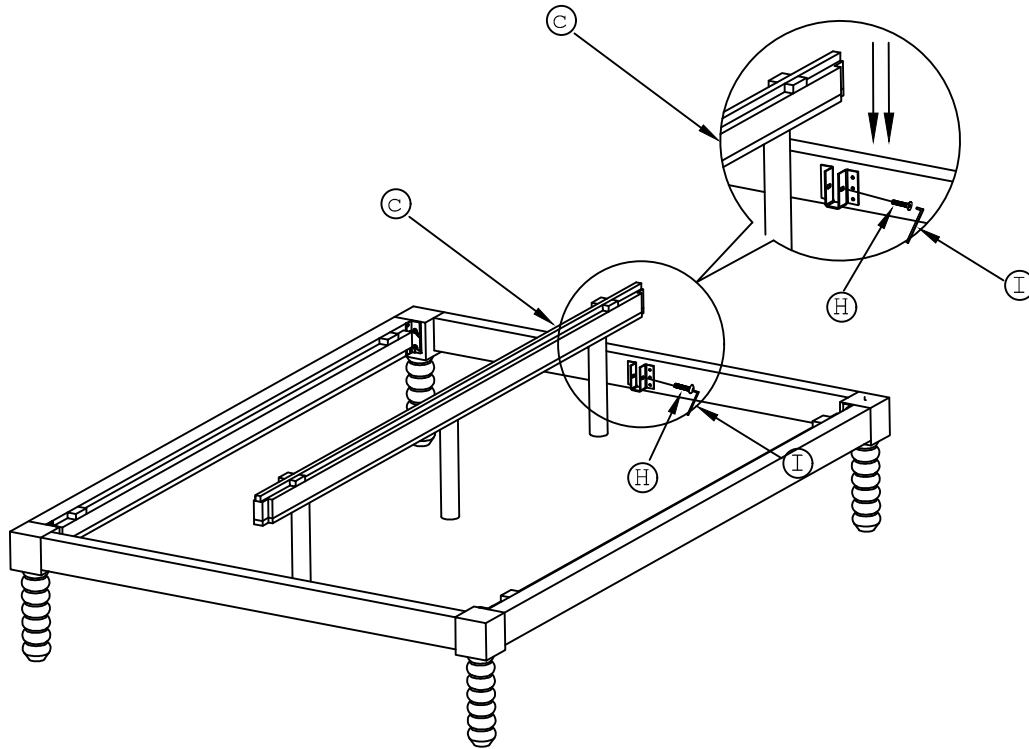
Clara Bed - Full

Assembly Instructions

URBAN OUTFITTERS

STEP 5

Place the center support (C) into the brackets on the end rails (B). Insert bolts (H) at both ends of the center support (C) as shown. Tighten the bolts (H) with Allen key (I).



STEP 6

With help, lay the slats (F) on the bed frame. Ensure the slats interlock the slat blocks on either end of the center support (C) as shown. Adjust the levelers in legs (E) as necessary to complete the assembly.

