

SILAS DINING TABLE

URBAN OUTFITTERS

Assembly Instructions

TOOLS REQUIRED BUT NOT INCLUDED: N/A

WARNINGS:

Do not throw away packing materials and carton until after assembly.

Assemble all parts on a clean smooth surface

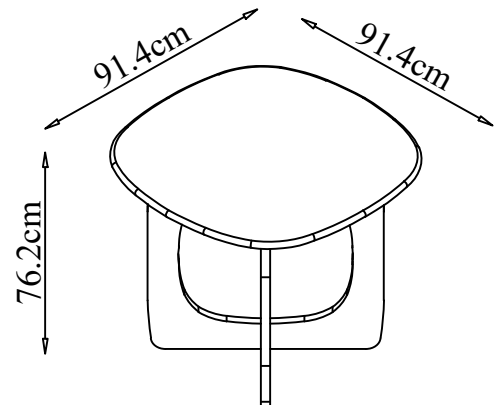
CARE INSTRUCTIONS:

Avoid direct exposure to sunlight. Do not place overheat or air conditioning vents. Adjust levelers so that the furniture sits flat on uneven floors. Blot spills do not rub, with a clean white cloth.

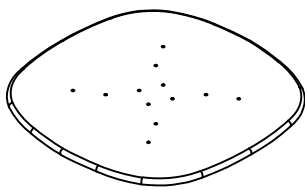
Do not use harsh chemicals.

Before cleaning any part test a small spot in a hidden area.

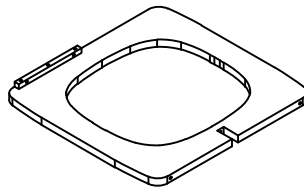
You may need to re-tighten all bolts after initial use.



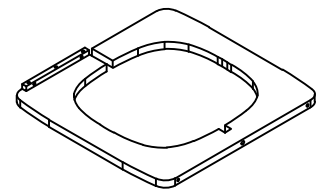
PARTS INCLUDED:



1) Table Top
(36 x 36 x 0.7") x 1
or
91.4 x 91.4 x 1.8 cm



2) Leg
(29.3 x 30 x 2.75") x 1
or
74.3 x 76.4 x 7 cm



3) Leg
(29.3 x 30 x 2.75") x 1
or
74.3 x 76.4 x 7 cm



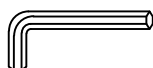
A) Bolt
(D 0.47 / 0.24 x 1.18") x 8
or
(D 12 / 6 x 30 mm)



B) Spring Washer
(D 0.47 / 0.24 x 0.08") x 8
or
(D 12 x 6 x 2 mm)



C) Flat Washer
(D 0.63 / 0.24 x 0.08") x 8
or
(D 16 x 6 x 2 mm)



D) Allen Key
(D 0.16 x 2.32") x 1
or
(D 4 x 59 mm)



E) Bolt
(D 0.47 / 0.24 x 2.36") x 1
or
(D 12 / 6 x 60 mm)

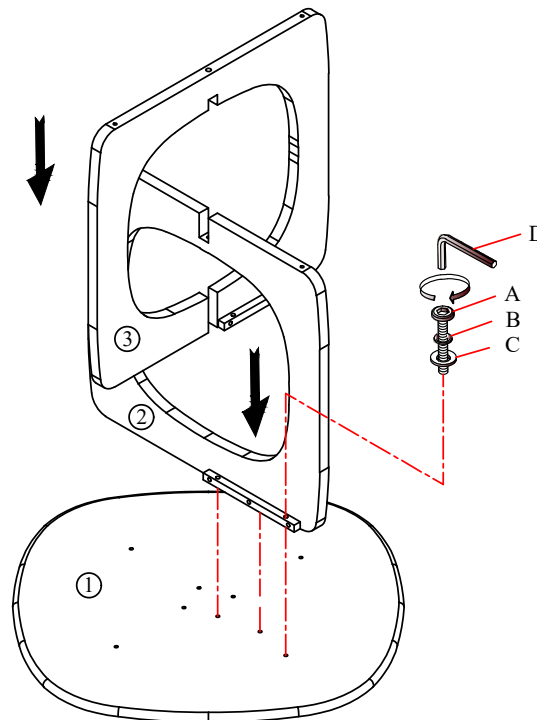
SILAS DINING TABLE

URBAN OUTFITTERS

Assembly Instructions

STEP 1

Place the leg (2) onto the table top (1), then place the leg (3) over the leg (2) onto the table top (1). Insert all bolts (A), flat washers (C), and spring washers (B) as shown and partially tighten. Then tighten all bolts (A) fully using Allen key (D).



STEP 2

Attach the leg (2) to the leg (3) with bolts (E), flat washers (C), and spring washers (B) using Allen key (D). With help, flip the table upright to complete the assembly.

