

# Miles Dining Table

## Assembly Instructions

URBAN OUTFITTERS

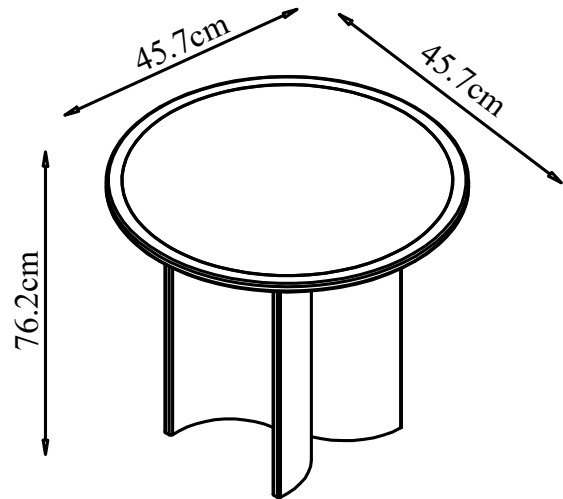
NO ADDITIONAL TOOLS REQUIRED

### WARNINGS:

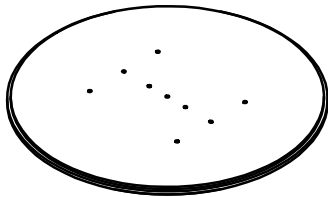
Do not throw away packing materials and carton until after assembly.  
Ensure all parts are present prior to assembly.  
Contact customer service immediately if parts are missing.  
Assemble all parts on a clean smooth surface.  
At least two people recommended for assembly.

### CARE INSTRUCTIONS:

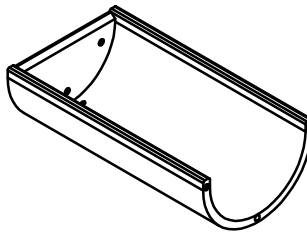
Avoid direct exposure to sunlight.  
Do not place over heat or air conditioning vents.  
Adjust levelers so that the furniture sits flat on uneven floors.  
Blot spills with a clean white cloth, do not rub.  
Do not use harsh chemicals.  
Before cleaning any part test a small spot in a hidden area.  
You may need to re-tighten all bolts after initial use.



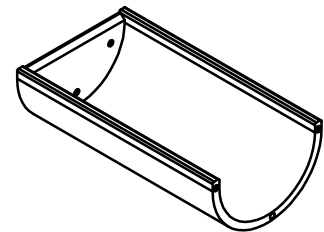
### PARTS INCLUDED:



1) Table Top  
(18 x 18 x 1") x 1  
or  
45.7 x 45.7 x 2.5cm



2) Leg  
(29x 16.1 x 8.1") x 1  
or  
73.7 x 41 x 20.5cm



3) Leg  
(29x 16.1 x 9.3") x 1  
or  
73.7 x 41 x 23.5cm



A) Bolt  
(D 0.47 / 0.24 x 1.38") x 7  
or  
(D 12 / 6 x 35 mm)



B) Spring Washer  
(D 0.47 / 0.24 x 0.08") x 7  
or  
(D 12 / 6 x 2 mm)



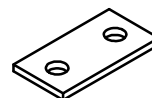
C) Flat Washer  
(D 0.63 / 0.24 x 0.08") x 7  
or  
(D 16 / 6 x 2 mm)



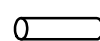
D) Allen Key  
(D 0.16 x 2.32") x 1  
or  
(D 4 x 59 mm)



E) Bolt  
(D 0.47 / 0.24 x 0.6") x 2  
or  
(D 12 / 6 x 15 mm)



F) Metal bar  
(D 1.9 x 1 x 0.1") x 1  
or  
(D 48 x 25 x 3 mm)



G) Dowel  
(D 0.3 / x 1.2") x 2  
or  
(D 8 x 30 mm)

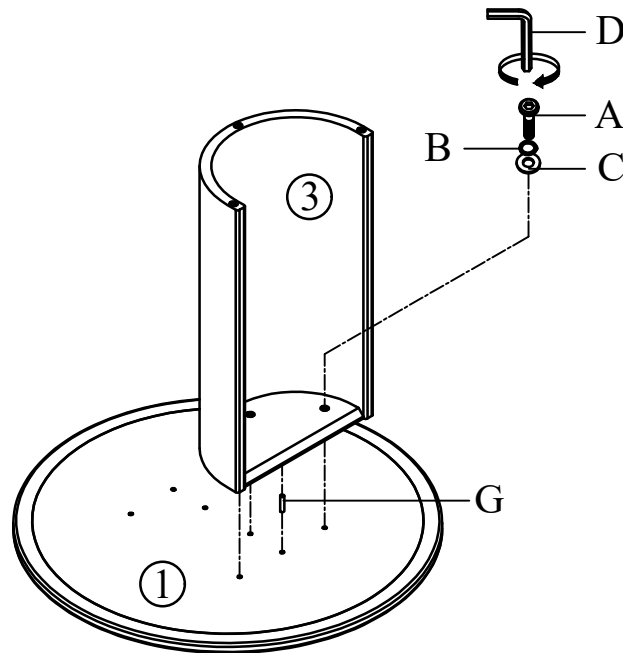
# Miles Dining Table

## Assembly Instructions

URBAN OUTFITTERS

### STEP 1

Insert the dowel (G) into the table top (1) as shown. Attach the table top (1) to leg (3), with bolts (A), spring washer (B) and flat washer (C), using Allen key (D) as shown.



### STEP 2

Repeat Step 1 to attach the leg (2). Attach legs (2)&(3) with bolts (A), spring washer (B), and flat washer (C), using Allen key (D) as shown. Then, attach the metal bar (E) to legs (2)&(3) with bolt (F), using Allen key (D) as shown. With help, flip the table upright to complete assembly.

