

Assembly Instructions

TOOLS REQUIRED BUT NOT INCLUDED:

Phillips head screwdriver, Wire Cutters

WARNINGS:

Do not throw away packing materials and carton until after assembly.

Ensure all parts are present prior to assembly.

Contact customer service immediately if parts are missing.

Assemble all parts on a clean smooth surface.

A licensed professional electrician should install direct wire fixtures.

Connect only to 3-wire single-phase electrical supply systems

(Provided with Ground wire or equivalent protection)

USE A TYPE A 40 WATT BULB, DO NOT EXCEED RECOMMENDED WATTAGE

CARE INSTRUCTIONS:

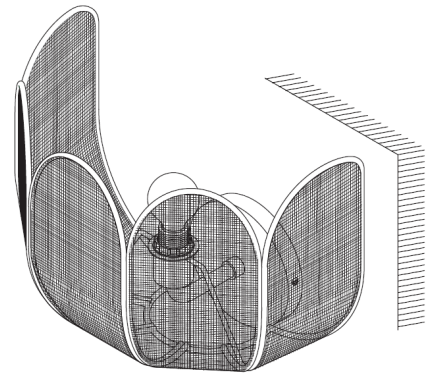
Avoid direct exposure to sunlight.

Blot spills with a clean white cloth, do not rub.

Do not use harsh chemicals.

Before cleaning any part test a small spot in a hidden area.

You may need to re-tighten all bolts after initial use.



PARTS INCLUDED:



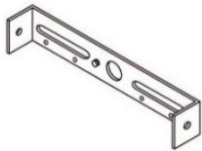
(A) Mounting Screws
[0.29" DIA X 0.98" L] x2



(B) Canopy Screws
0.26" DIA X 0.79" L x 2



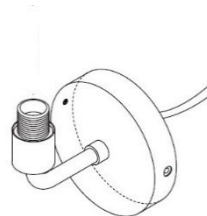
(C) Plastic Wire connectors x 3



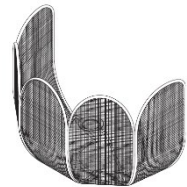
(D) Mounting Bracket



(E) Socket Ring



(F) Canopy Base



(G) Shade

Assembly Instructions

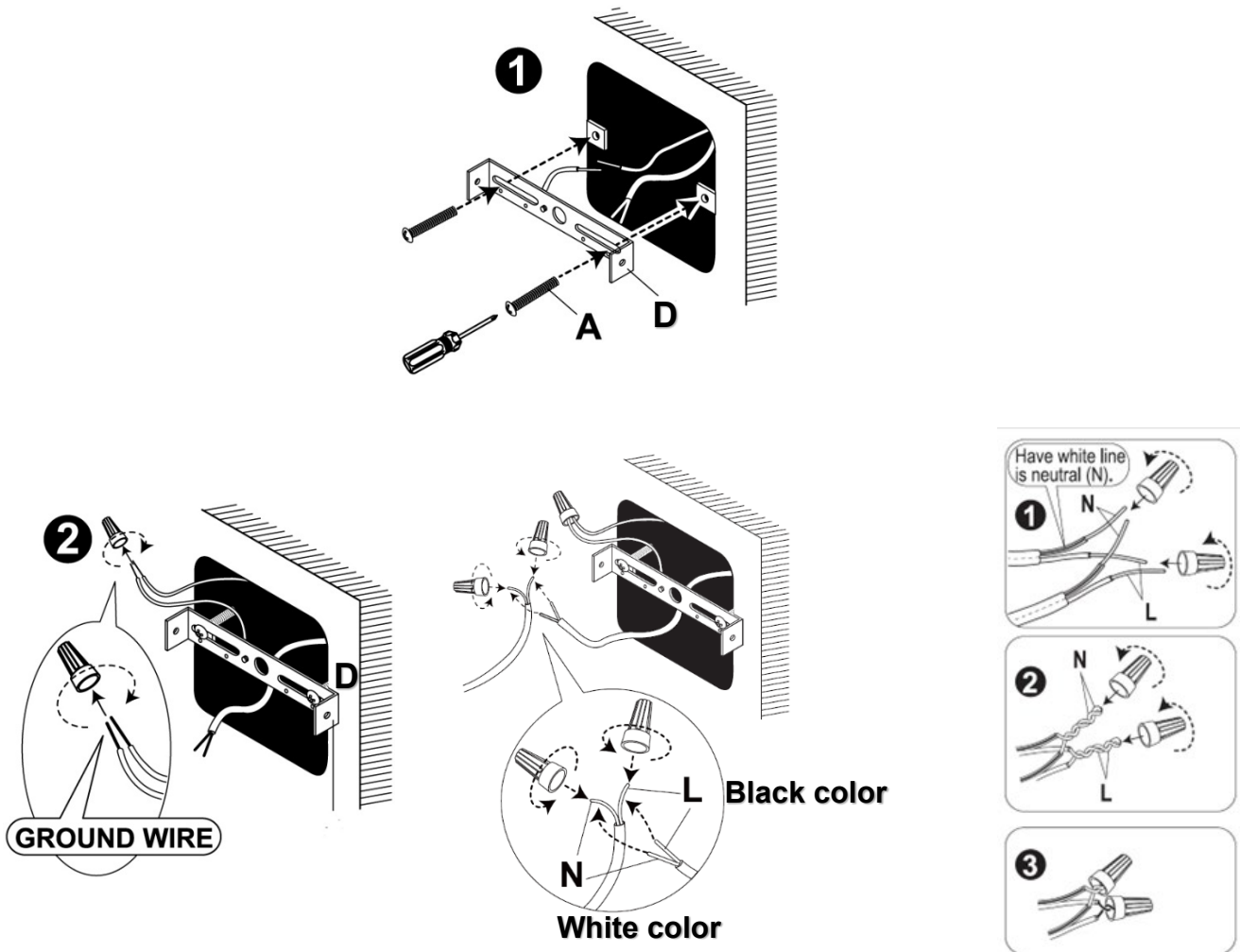
STEP 1

Insert the $\frac{1}{8}$ " wires through the center opening of the Mounting Bracket (D). Attach the Mounting Bracket (D) to the existing electrical box using the Mounting Screws (A). Tighten each screw until the Mounting Bracket (D) is firmly secured.

STEP 2

Carefully inspect the fixture's wires:

- Neutral fixture wire = white
 - Hot fixture wire = black
 - Ground wire = green / copper (bare)
 - a) Attach the ground wire from the junction box to the fixture ground wire with a wire nut, and wrap the connection with electrical tape
 - b) Attach the hot fixture wire from the pendant to the hot junction box wire.
 - c) Attach the neutral fixture wire from the pendant to the neutral junction box wire.
 - d) Fasten each together with a wire nut and wrap the connection with electrical tape
- DO NOT REVERSE THE HOT AND NEUTRAL CONNECTIONS OR SAFETY WILL BE COMPROMISED**



Assembly Instructions

STEP 3

Position the Canopy Base (F) over the Mounting Bracket (D), aligning the holes in the Canopy Base (F) with the holes in the Mounting Bracket (D). Insert the Canopy Screws (B) and tighten to secure the Canopy Base (F) in place.

STEP 4

Insert the specified light bulb into the socket of Canopy Base (F).

DO NOT EXCEED THE SPECIFIED WATTAGE.

STEP 5

Place the Shade (G) atop the Canopy Base (F) and screw the Socket Ring (E) onto the Canopy Base (F) clockwise until tight to secure the Shade (G).

STEP 6

Restore power to the outlet box, and flip on the light switch to test the connection. Enjoy your new lamp!

USE A TYPE A 40 WATT BULB, DO NOT EXCEED RECOMMENDED WATTAGE

