

Jane Shelf

URBAN OUTFITTERS

Assembly Instructions

TOOLS REQUIRED BUT NOT INCLUDED:

Drill, Phillips head screwdriver driver, Pencil, Level

WARNINGS:

Do not throw away packing materials and carton until after assembly.

Ensure all parts are present prior to assembly.

Contact customer service immediately if parts are missing.

Assemble all parts on a clean smooth surface.

CARE INSTRUCTIONS:

Avoid direct exposure to sunlight.

Blot spills with a clean white cloth, do not rub.

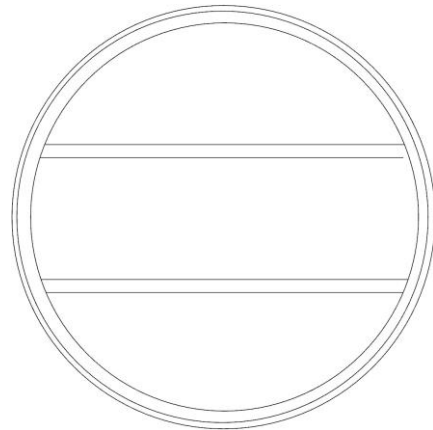
Do not use harsh chemicals

Before cleaning any part test a small spot in a hidden area.

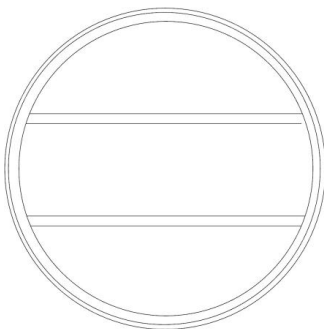
Do not place overheat or air conditioning vents.

Do not over-tighten the parts.

The parts may loosen after initial use; re-tighten as necessary



PARTS INCLUDED:



(A) Shelf



(B) Screw
[D 3.5 x 40 mm] x2



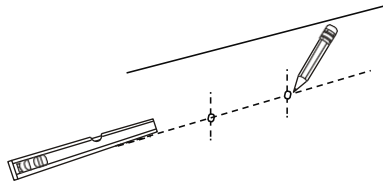
(C) Plastic Anchor
[D 4 x 30 mm] x2

Jane Shelf

Assembly Instructions

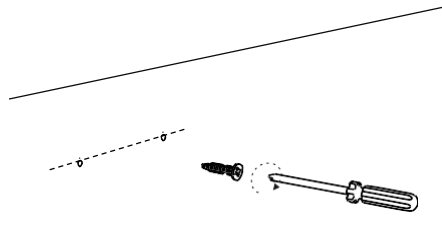
URBAN OUTFITTERS

- STEP 1** Place the shelf (A) on the wall in its desired location and ensure it is level. Mark the location of the brackets on the back of the shelf (A) on the wall with a pencil, then remove it from the wall.



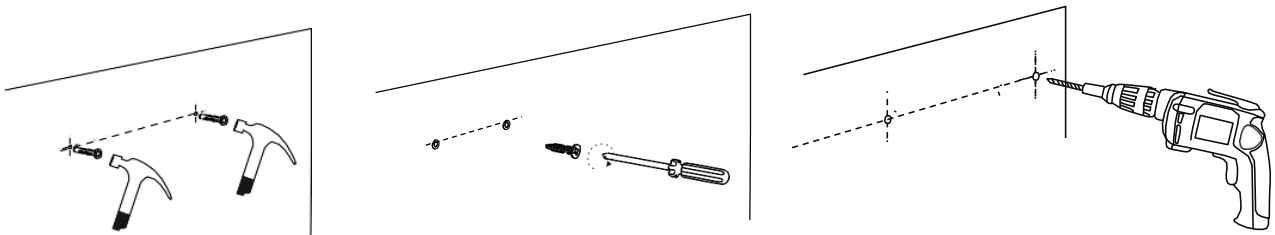
Wood or Stud installation:

Drill a 1/8" or 3mm hole in the wall at the marked locations. Insert screws (B) into the holes and fasten with a Phillips head screwdriver or drill. Leave ~3/16" between the top of the screw and the wall.



Drywall installation:

Drill a 5/32" or 4mm hole in the wall at the marked locations. Insert the plastic anchors (C) into the wall at the marked location using a hammer then, insert screws (B) into the plastic anchors (C). Fasten screws (B) with a Phillips head screwdriver or drill. Leave ~3/16" between the top of the screw and the wall.



The included hardware is intended for attachment to drywall or wooden wall surfaces, contact your local hardware store to find the correct anchor for alternative wall-types such as stone or brick.

STEP 2

Hang the shelf (A) onto screws (B) to complete assembly. Tighten the screws (B) if the shelf tilts away from the wall.

