

RASMUS HEADBOARD

URBAN OUTFITTERS

Assembly Instructions

TOOLS REQUIRED BUT NOT INCLUDED:

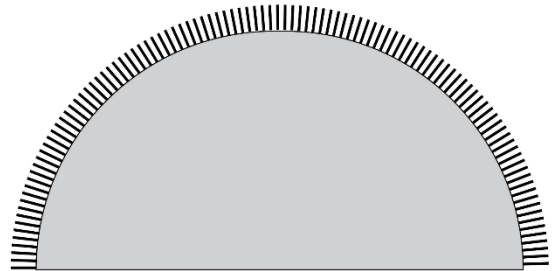
Drill, Hammer, Pencil

WARNINGS:

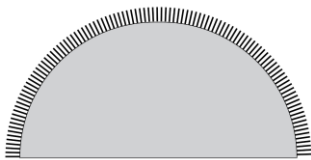
Do not throw away packing materials and carton until after assembly.
Ensure all parts are present prior to assembly.
Contact customer service immediately if parts are missing.
Assemble all parts on a clean smooth surface.

CARE INSTRUCTIONS:

Avoid direct exposure to sunlight.
Do not place over heat or air conditioning vents.
Avoid direct exposure to sunlight.
Do not place over heat or air conditioning vents.
Blot spills, do not rub, with a clean white cloth.
Natural Fiber products are to be used under cover.
Clean spills with a damp cloth and warm water only.
Do not use harsh chemicals, abrasive cleaners, silicone or alcohol-based agents on woven materials.



PARTS INCLUDED:



(A) Headboard
[62" x 30"] x1
or
[157.5 cm x 76 cm] x1



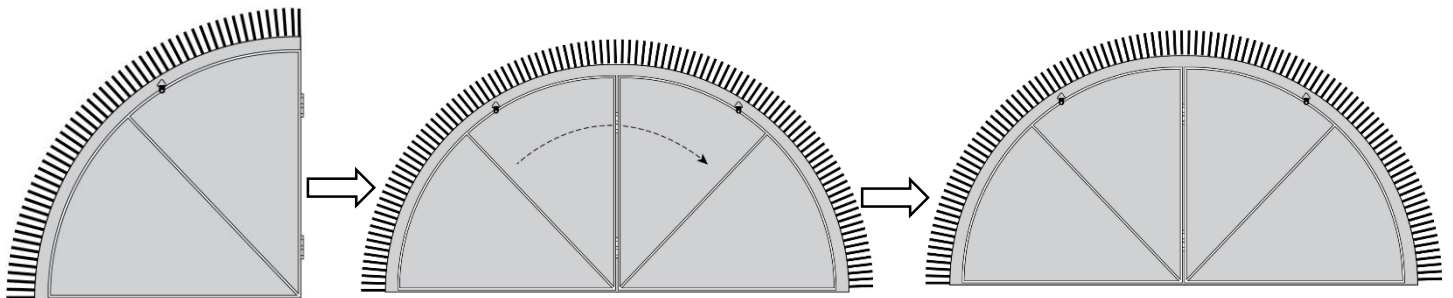
(B) L hook
[D0.02" x 0.79"x 1.18"] x2
or
[0.5 cm x 2 cm x 3 cm] x2



(C) Plastic Anchor
[D 0.35 " x 1.4"] x 2
or
[D 0.9 cm x 3.6 cm] x2

STEP 1

Carefully open the headboard.



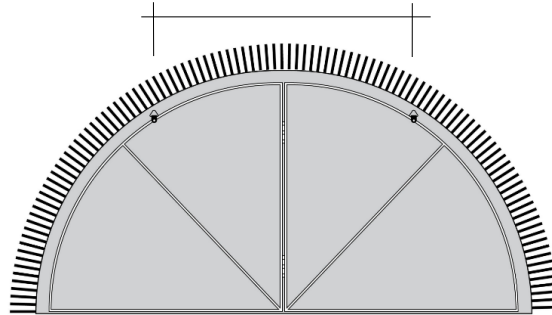
RASMUS HEADBOARD

Assembly Instructions

URBAN OUTFITTERS

STEP 2

Determine the position of the headboard (A) on the wall. Mark the position of the D rings on the wall.

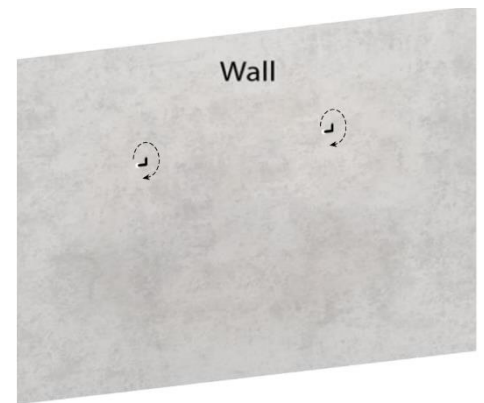
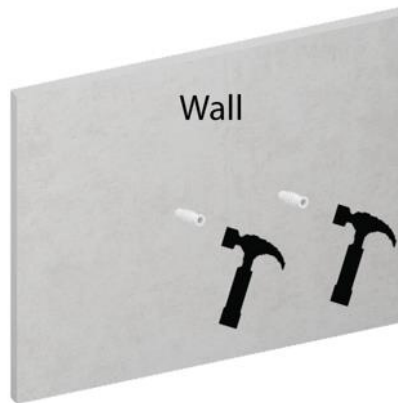
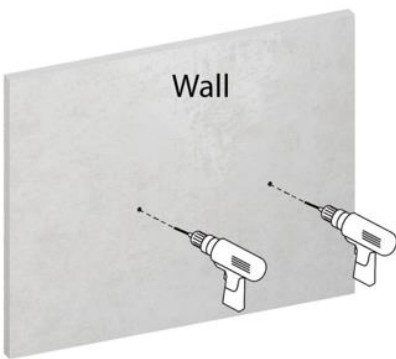


STEP 3

If attaching to a stud or wooden surface, screw the L-hook (B) directly into the wall at the marked locations.

If attaching to drywall, pre-drill a hole for the plastic anchors (C) at the marked locations, then hammer the plastic anchors (C) into the wall. Screw the L-hook (B) into the plastic anchors as shown below.

The included hardware is intended for attachment to drywall or wooden wall surfaces, contact your local hardware store to find the correct anchor for alternative wall-types such as stone or brick.



STEP 4

Hang the headboard (A) onto the L hooks (B) to complete assembly.

