

Clara Two Door Cabinet

Assembly Instructions

URBAN OUTFITTERS

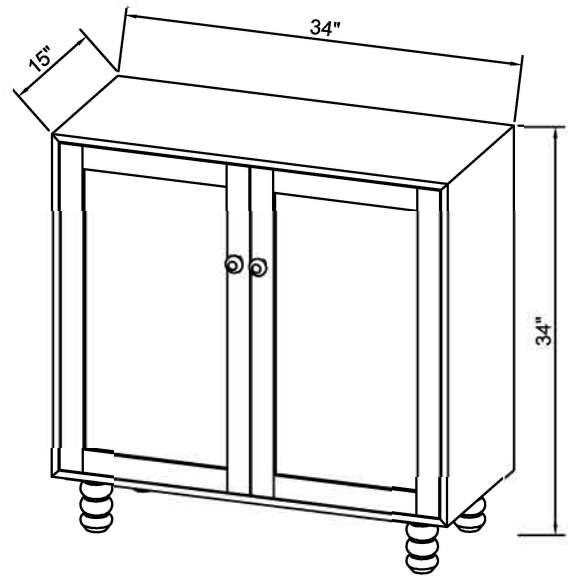
NO ADDITIONAL TOOLS REQUIRED

WARNINGS:

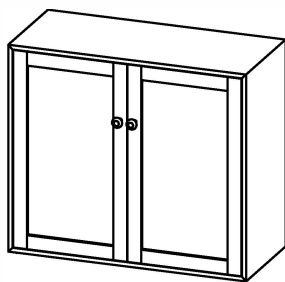
Do not throw away packing materials and carton until after assembly. Ensure all parts are present prior to assembly. Contact customer service immediately if parts are missing. Assemble all parts on a clean smooth surface.

CARE INSTRUCTIONS:

Avoid direct exposure to sunlight.
Do not place over heat or air conditioning vents.
Adjust levelers so that the furniture sits flat on uneven floors.
Blot spills with a clean white cloth, do not rub.
Do not use harsh chemicals.
Before cleaning any part test a small spot in a hidden area.
You may need to re-tighten all bolts after initial use.



PARTS INCLUDED



(A) Cabinet
x1



(B) Legs
x4



(C) Shelf
x1



(D) Shelf Pins
x4



(E) Round Head Allen Bolts
[M6 X 16MM] x16



(F) Washer
[M6 X 20MM] x16



(G) ALLEN KEY
[4MM] x1

EXCLUSIVE AND CONFIDENTIAL PROPERTY OF URBAN OUTFITTERS, INC.
© 2017 UO, Inc. All rights reserved, including all applicable copyright, design and patent rights. Any unauthorized reproduction, adaptation, distribution or other infringement will be prosecuted.

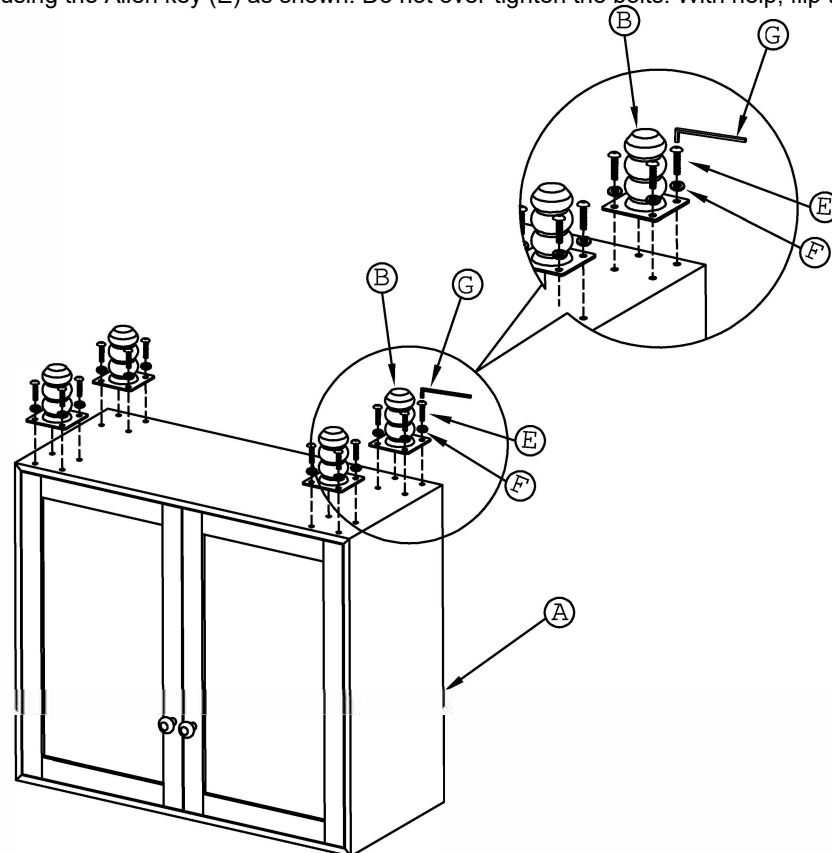
Clara Two Door Cabinet

URBAN OUTFITTERS

Assembly Instructions

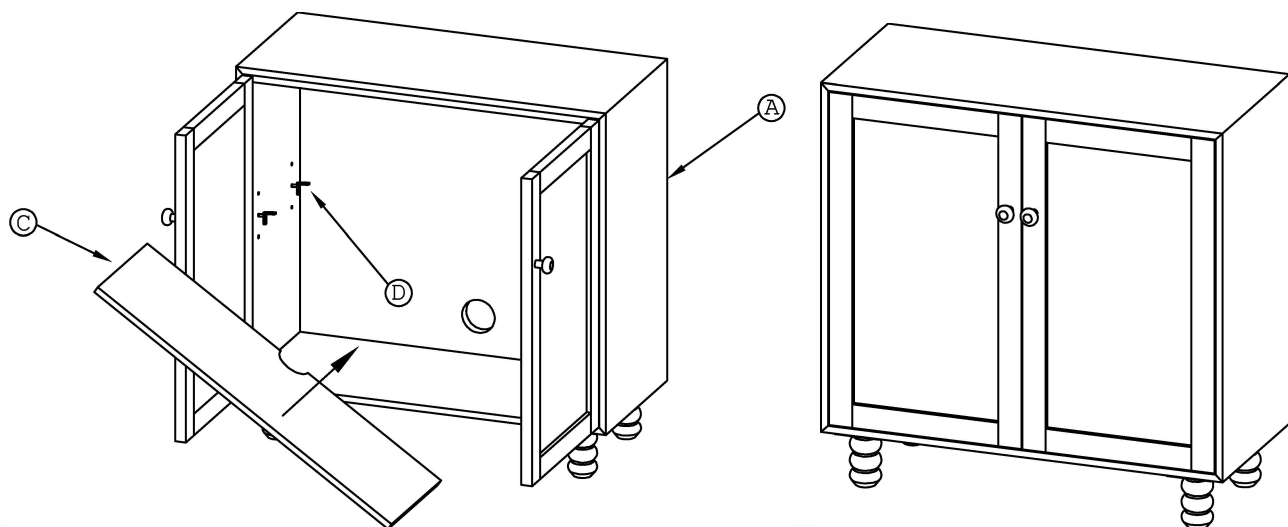
STEP 1

With help, lay the nightstand (A) over onto a clean smooth surface. Attach the legs (B) to the nightstand (A) with the Allen bolts (C) and flat washers (D) using the Allen key (E) as shown. Do not over-tighten the bolts. With help, flip the nightstand (A) back over onto its legs.



STEP 2

Open the doors and insert the shelf pins (D) ensuring they are level. Place the shelf (C) inside the cabinet on the shelf to complete the assembly.



Anti-Tip Kit Instructions

URBAN OUTFITTERS

Assembly Instructions

TOOLS REQUIRED BUT NOT INCLUDED:
Drill, Phillips head screwdriver, Hammer, Pencil

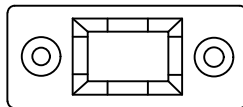
WARNINGS:

Children may be injured by the tipping of furniture, and the use of the Anti-Tip Kit is highly recommended. This Anti-Tip Kit is only a deterrent; it is not a substitute for proper adult supervision. The manufacturer and retailer assume no liability for improper installation or excess loads placed on screws, brackets, or straps. When properly installed, this restraint provides protection against unexpected tipping of furniture. This Anti-Tip Kit **MUST** be installed into the wall using proper mounting hardware **OR** into a wall stud using appropriate screws. The position of the Anti-Tip Kit depends on the product and the location of the wall studs. The included hardware is intended for attachment to drywall or wooden studs, contact your local hardware store to find the correct anchor for alternative wall-types such as stone or brick.

PARTS INCLUDED:



(A) Nylon strip
x2



(B) Bracket
x4 total
(x2 pre-attached)



(C) Anchor
[6mm x 38mm] x4



(D) Wall Screw
[6mm x 35mm] x4



(E) Drywall Screw
[4mm x 16mm]
x4 pre-attached

STEP 1

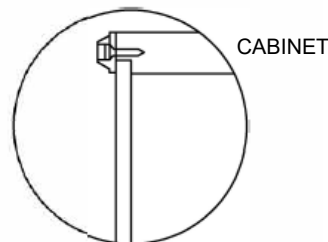
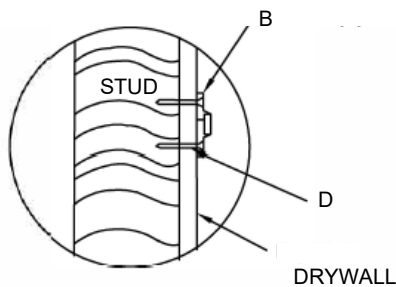
It is recommended to locate wood studs within your wall to attach the anti-tip brackets (B). With help, place the cabinet against the wall in a preferred location. Place the anti tip brackets (B) on the wall in line with the anti-tip brackets attached to the back of the cabinet. Mark the location of the holes in the anti tip bracket (B) on the wall. With help, move the cabinet back away from the wall.

Wood or Stud Installation:

Insert screws (D) through the anti-tip bracket (B) into the wall and tighten with a Phillips head screwdriver or drill.

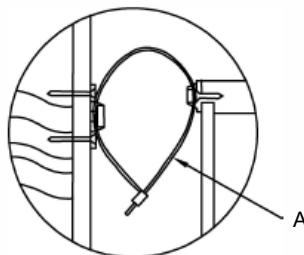
Drywall Installation:

Attach the drywall anchor (C) to the wall at the marked location using a drill and hammer. Insert screw (D) through the anti-tip bracket (B) into the drywall anchor (C) and tighten with a Phillips head screwdriver.



STEP 2

With help, move the cabinet back against the wall in line with the anti tip brackets (B). Feed the Nylon strap (A) through the anti-tip brackets (B) then, pull the nylon strap tight.



STEP 3

Adjust the levelers as necessary to accommodate uneven floors.