

BODEN WALL SHELF

URBAN OUTFITTERS

Assembly Instructions

TOOLS REQUIRED BUT NOT INCLUDED

Drill, Hammer, Phillips head screwdriver, Pencil

WARNINGS:

Two people recommended for assembly

Do not throw away packing materials and carton until after assembly.

Ensure all parts are present prior to assembly.

Contact customer service immediately if parts are missing.

Assemble all parts on a clean smooth surface

CARE INSTRUCTIONS:

Avoid direct exposure to sunlight.

Blot spills with a clean white cloth, do not rub.

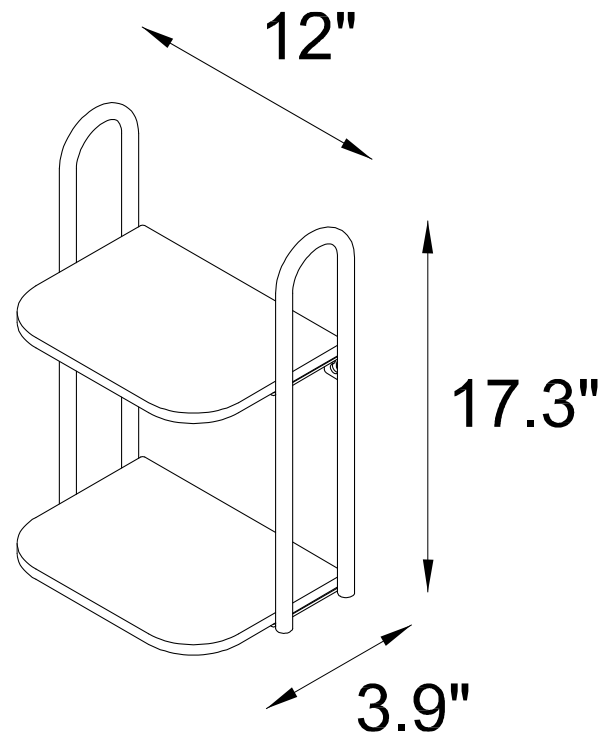
Do not use harsh chemicals

Before cleaning any part test a small spot in a hidden area.

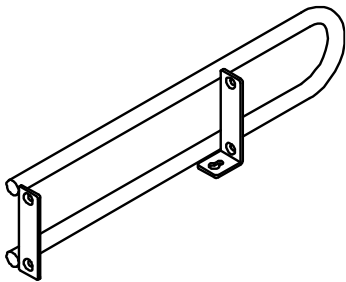
Do not place overheat or air conditioning vents.

Do not over-tighten the parts.

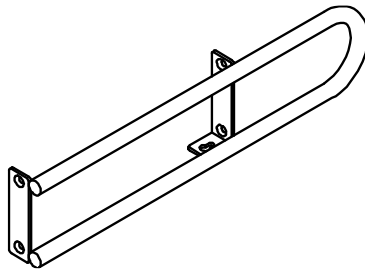
The parts may loosen after initial use; re-tighten as necessary



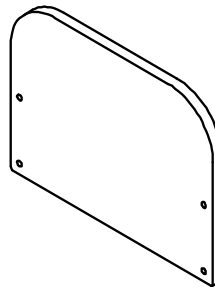
PARTS INCLUDED



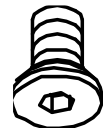
A-L) Left Frame



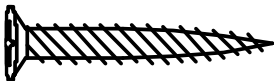
A-R) Right Frame



B) Wood Shelf x2



C) Bolt
[M6x12mm] x8



D) Wall Screw [4x32] x2



E) Drywall Anchor x2

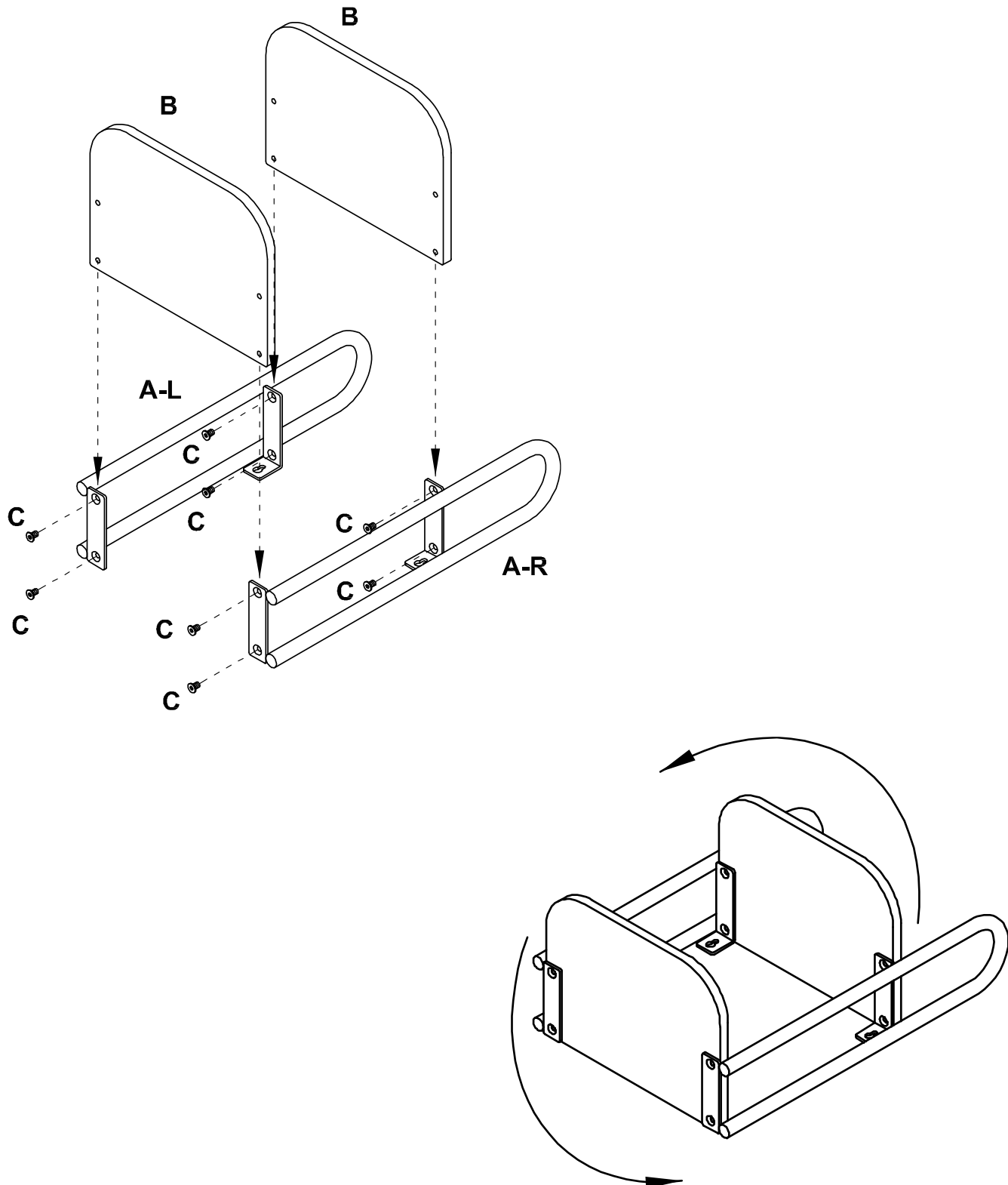


F) Allen Key

Assembly Instructions

STEP 1

Lay down all the parts onto clean carpet or cardboard for assembly. Align wood shelf (B) with left frame (A-L) and right frame (A-R). Insert bolts (C) and partially tighten with Allen key (F). Once all bolts are inserted and partially tightened, fully tighten the bolts. With help, flip the shelf upright.



STEP 2

Place the wall shelf on the wall in a chosen location. Ensure the wall shelf is leveled and mark the location for the screw holes on the wall as shown.

Wood or Stud installation:

Insert the screws (D) through the specified holes in the storage. Use a Phillips head screwdriver (not included) to fasten the screws (D) directly into the wall at the marked location. Leave 3/16" or 5mm between the top of the screws (C) and the wall.

Drywall installation:

Insert drywall anchors (E) into the wall at the marked locations using a drill and a hammer (not included). Insert screws (D) through the specified holes in the shelf and into the anchors, then tighten with a Phillips head screwdriver (not included). Leave 3/16" or 5mm between the top of the screws (D) and the wall.

STEP 3

Gently hang the wall shelf on the screws (D). If the wall shelf slopes downward, tighten the gap between the top of the screws (D) and the wall.

DO NOT OVERTIGHTEN THE SCREWS (D).

The included hardware is intended for attachment to drywall or wooden wall surfaces, contact your local hardware store to find the correct anchor for alternative wall-types such as stone or brick.

