

MIRROR: EBBA MIRROR

Assembly Instructions

URBAN OUTFITTERS

TOOLS REQUIRED BUT NOT INCLUDED:

Phillips head screwdriver, pencil, level

WARNINGS:

Do not throw away packing materials and carton until after assembly

Assemble all parts on a clean smooth surface

CARE INSTRUCTIONS:

Avoid direct exposure to sunlight. Do not place over heat or Air conditioning vents.

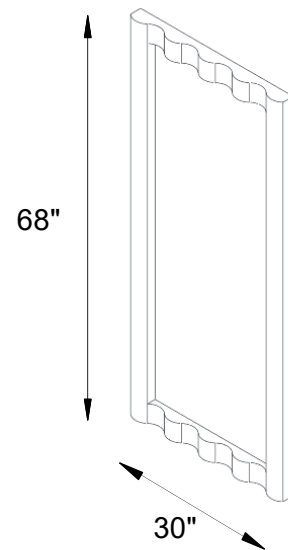
Adjust levelers so that the furniture sits flat on uneven floors.

Blot spills do not rub, with a clean white cloth.

Do not use harsh chemicals.

Before cleaning any part test a small spot in a hidden area.

You may need to re-tighten all bolts after initial use.



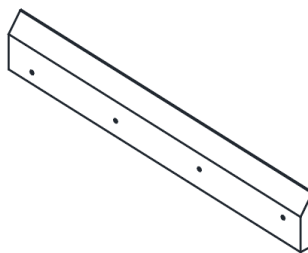
PARTS INCLUDED



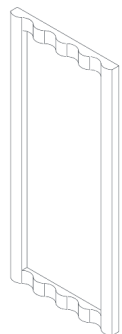
(A) Anchor
[12x12x42mm] X4



(B) Screw
[4x4x38mm] X4



(C) Cleat X1



(D) Mirror X1

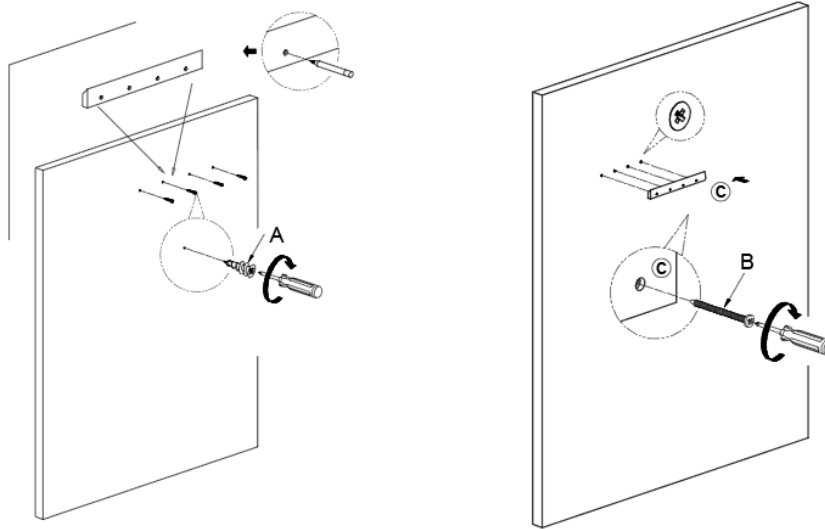
MIRROR: EBBA MIRROR

Assembly Instructions

URBAN OUTFITTERS

STEP 1

Place the cleat on the wall in its desired location. Ensure the cleat is level and mark the location of the screw holes. If attaching to drywall, insert the anchors (A) into the wall at the marked hole locations, then screws (B) through the cleat into anchors (A) using a phillips head screwdriver. If screwing into studs, no anchor is required.



STEP 2

With help, hang the mirror (D) onto Cleat (C) to complete assembly.

