

# ISOBEL COFFEE TABLE

URBAN OUTFITTERS

## Assembly Instructions

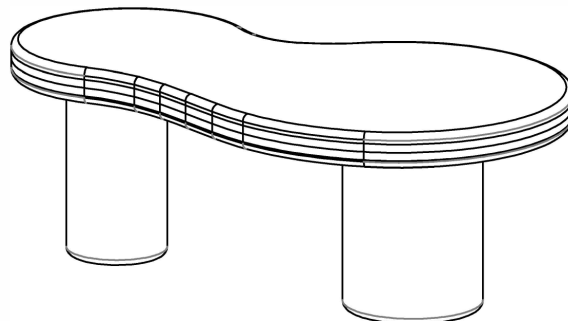
### TOOLS INCLUDED:



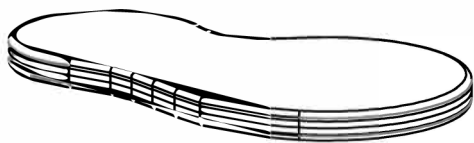
Do not throw away packing materials and carton until after assembly.  
Assemble all parts on a clean smooth surface

### CARE INSTRUCTIONS:

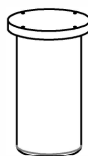
Avoid direct exposure to sunlight. Do not place over heat or Air conditioning vents.  
Adjust levelers so that the furniture sits flat on uneven floors.  
Blot spills do not rub, with a clean white cloth.  
Do not use harsh chemicals.  
Before cleaning any part test a small spot in a hidden area.  
You may need to re-tighten all bolts after initial use.



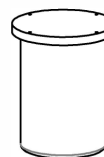
### PARTS INCLUDED



(A) Top Panel  
1x



(B) Small Leg  
1x



(C) Large Leg  
1x



(D) Spring Washer  
M6  
8x



(E) Flat Washer  
M6  
8x



(F) Bolt  
M6 x 25mm  
8x

Overall Size of Coffee Table  
Width = 1073mm/42.25in  
Depth = 629mm/24.75in  
Height= 394mm/15.5in

# ISOBEL COFFEE TABLE

URBAN OUTFITTERS

## Assembly Instructions

STEP 1. Lay the Top Panel (A) over onto a clean smooth surface. Align Small Leg (B) and Large Leg (C) as shown below. Insert Bolt (F), Spring Washer (D), and Flat Washer (E). Tighten with supplied Hex Key. With help flip the table upright.

