

ACRYLIC WIGGLE SHELF – S/M

URBAN OUTFITTERS

Assembly Instructions

TOOLS REQUIRED BUT NOT INCLUDED

Drill, Phillips head screwdriver, Hammer, Level, Pencil

WARNINGS:

Do not throw away packing materials and carton until after assembly.

Ensure all parts are present prior to assembly.

Contact customer service immediately if parts are missing.

Assemble all parts on a clean smooth surface

CARE INSTRUCTIONS:

Avoid direct exposure to sunlight.

Do not place overheat or air conditioning vents.

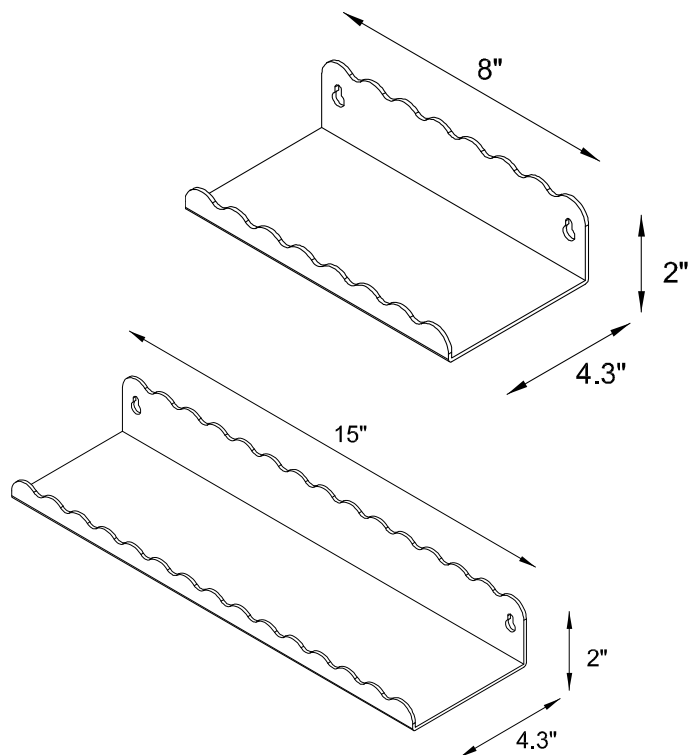
Adjust levelers so that the furniture sits flat on uneven floors.

Blot spills with a clean white cloth, do not rub.

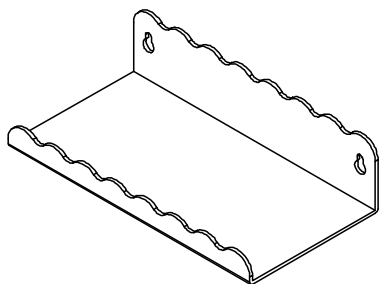
Do not use harsh chemicals.

Before cleaning any part test a small spot in a hidden area.

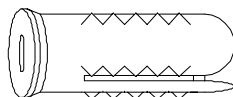
You may need to re-tighten all bolts after initial use.



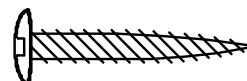
PARTS INCLUDED



A) Acrylic Shelf – Small / Medium



B) Plastic Drywall Anchor x2



C) Wall Screw
[4x25] x2

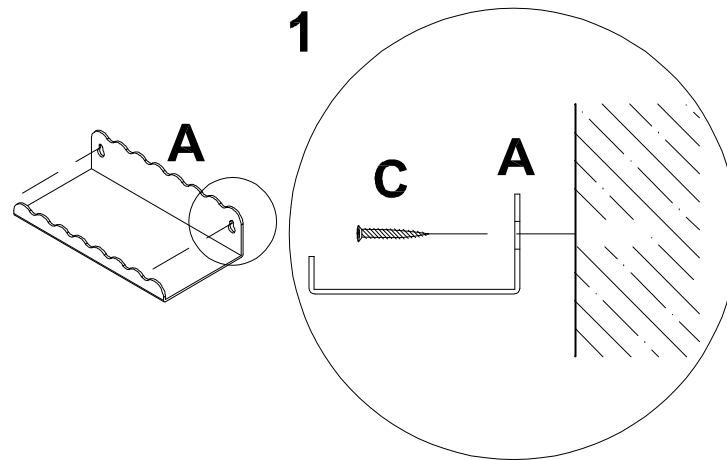
Assembly Instructions

STEP 1

Place the Shelf (A) on the wall in a chosen location. Ensure the Shelf (A) is level and mark the locations for the screws through the holes in the shelf (A).

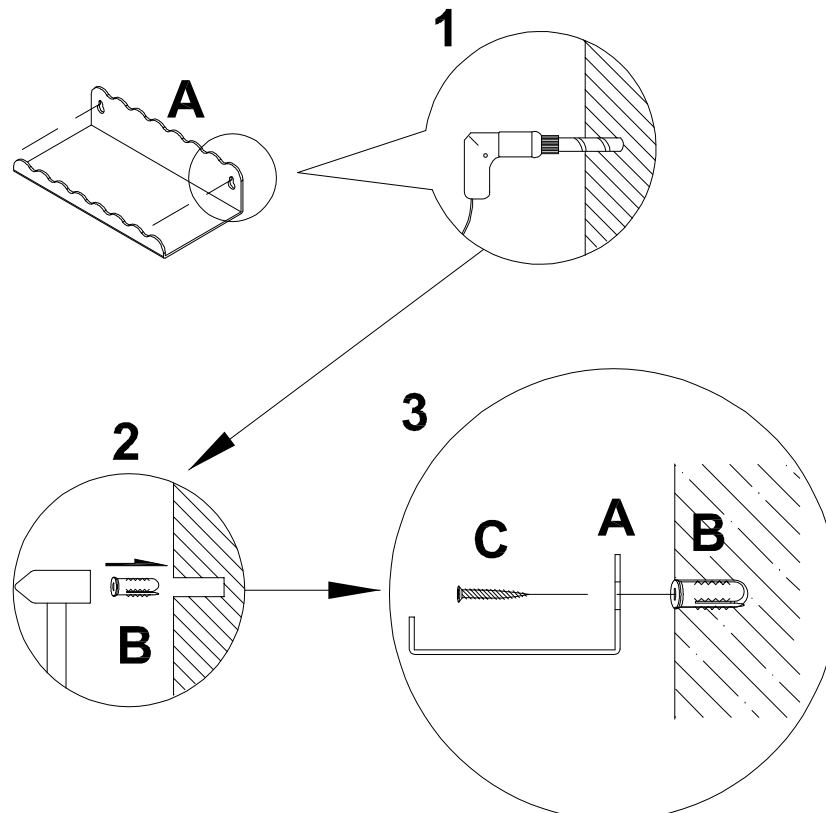
Wood or Stud installation:

Use a Phillips head screwdriver to fasten the screws (C) directly into the wall at the marked locations. Leave 1/8 - 3/16" between the top of the screws (C) and the wall. Gently hang the shelf (A) on the screws (C). If the shelf (A) slopes downward, tighten the gap between the top of the screws (C) and the wall.



Drywall installation:

Insert anchors (B) into the wall at the marked locations using a drill and a hammer. Insert screws (C) into the anchors (B), then tighten with a Phillips head screwdriver or drill. Leave 1/8 - 3/16" between the top of the screw (C) and the wall. Gently hang the shelf (A) on the screws (C). If the shelf (A) slopes downward, tighten the gap between the top of the screws (C) and the wall.



The included hardware is intended for attachment to drywall or wooden wall surfaces, contact your local hardware store to find the correct anchor for alternative wall-types such as stone or brick.