

WIGGLE STORAGE SHELF

URBAN OUTFITTERS

Assembly Instructions

TOOLS REQUIRED BUT NOT INCLUDED:

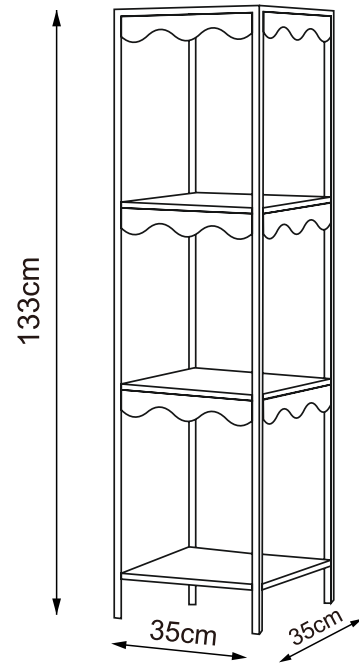
Drill, Phillips head screwdriver, Hammer, Pencil

WARNINGS:

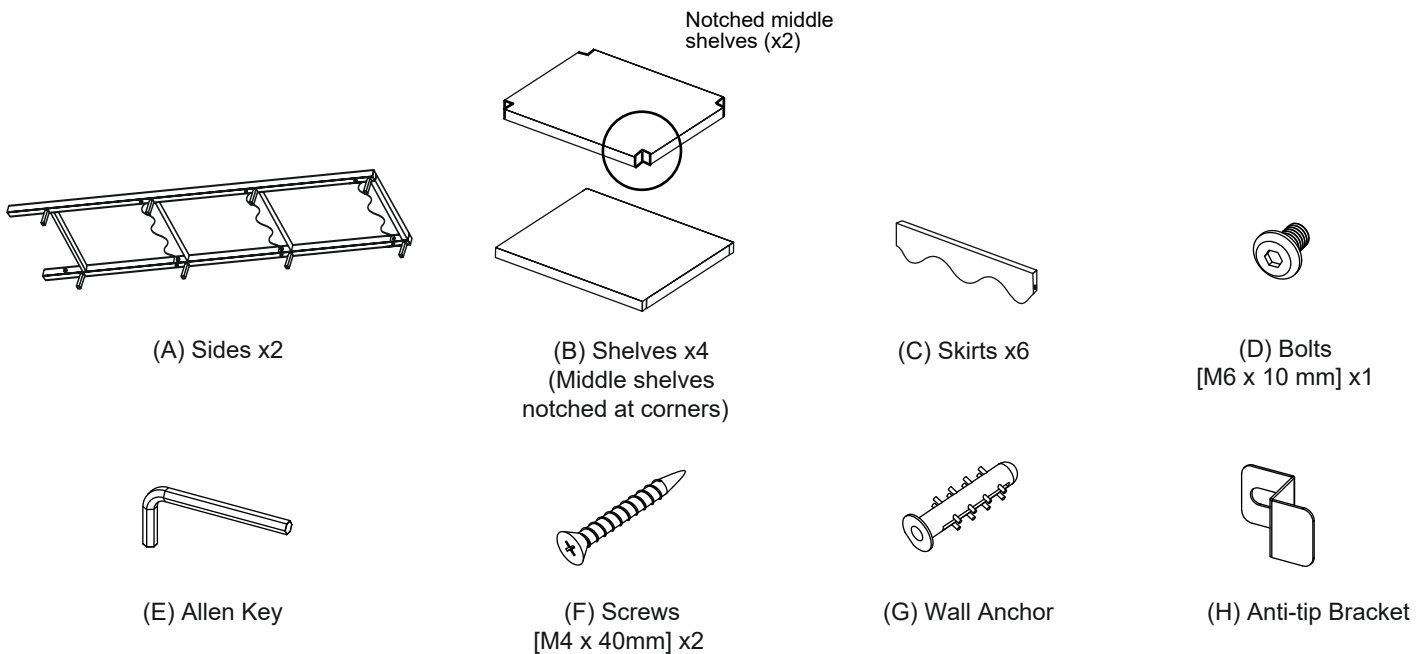
Two people recommended for assembly
Do not discard packing materials and the carton until assembly is complete.
Ensure all parts are present prior to assembly.
Contact customer service immediately if any parts are missing.
Assemble all parts on a clean, smooth surface.

CARE INSTRUCTIONS:

Avoid direct exposure to sunlight.
Blot spills with a clean, white cloth; do not rub.
Do not use harsh chemicals.
Before cleaning any part, test a small spot in a hidden area.
Do not place over heat or air conditioning vents.
Do not over-tighten the parts.
The parts may loosen after initial use; re-tighten as necessary.



PARTS INCLUDED:



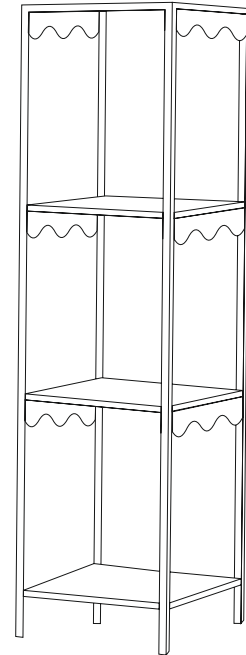
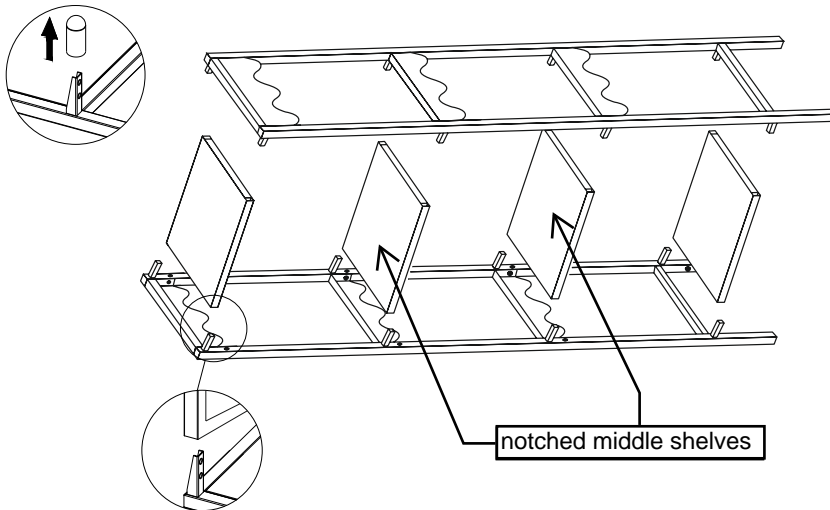
WIGGLE STORAGE SHELF

URBAN OUTFITTERS

Assembly Instructions

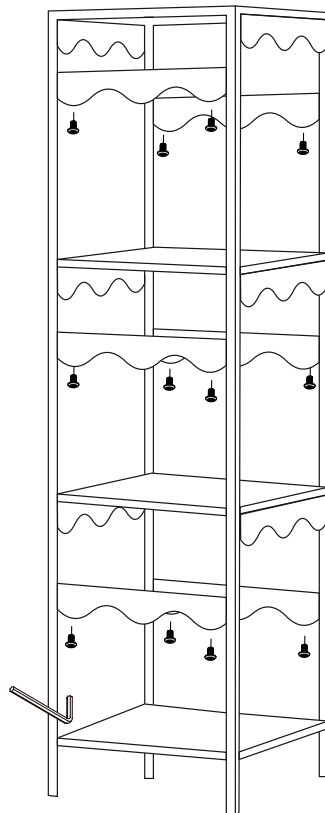
STEP 1

Lay down all the parts on a clean carpet or cardboard for assembly. Remove the plastic caps from the sides (A). Insert the shelves (B) into the sides (A). **Insert the shelves (B) with notches in the center two positions.**



STEP 2

Align the skirts (C) with the partially assembled shelf, one at a time, and insert the bolts (D) as shown. Partially tighten the bolts (D) with the allen key (E). Once all bolts are inserted and partially tightened, fully tighten the bolts.



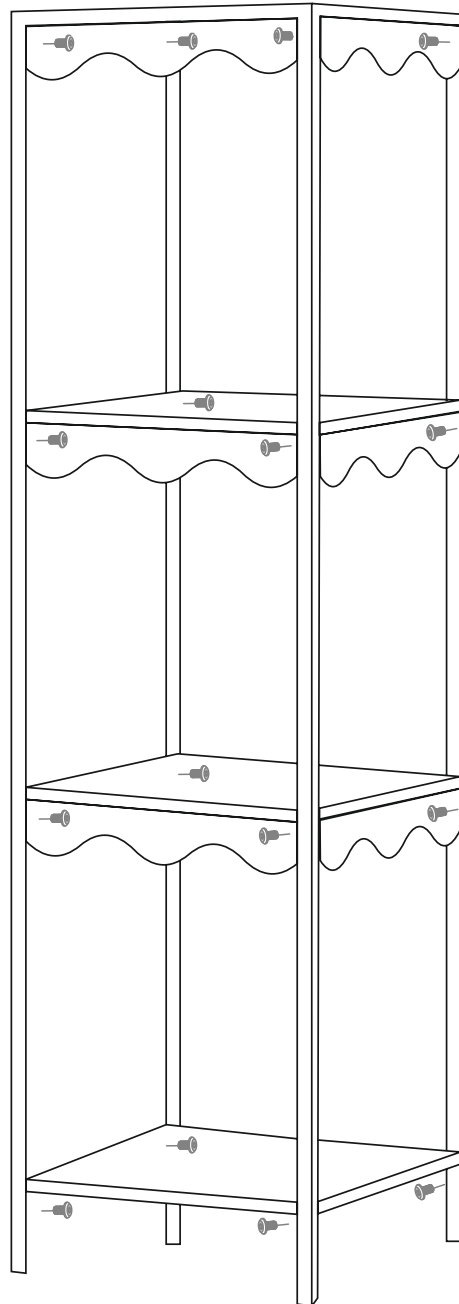
WIGGLE STORAGE SHELF

URBAN OUTFITTERS

Assembly Instructions

STEP 3

Align the remaining bolts (D) as shown, and partially tighten with allen key (E). Once all bolts are inserted and partially tightened, fully tighten the bolts.



WIGGLE STORAGE SHELF

URBAN OUTFITTERS

Assembly Instructions

STEP 4 - Anti-tip Kit (optional)

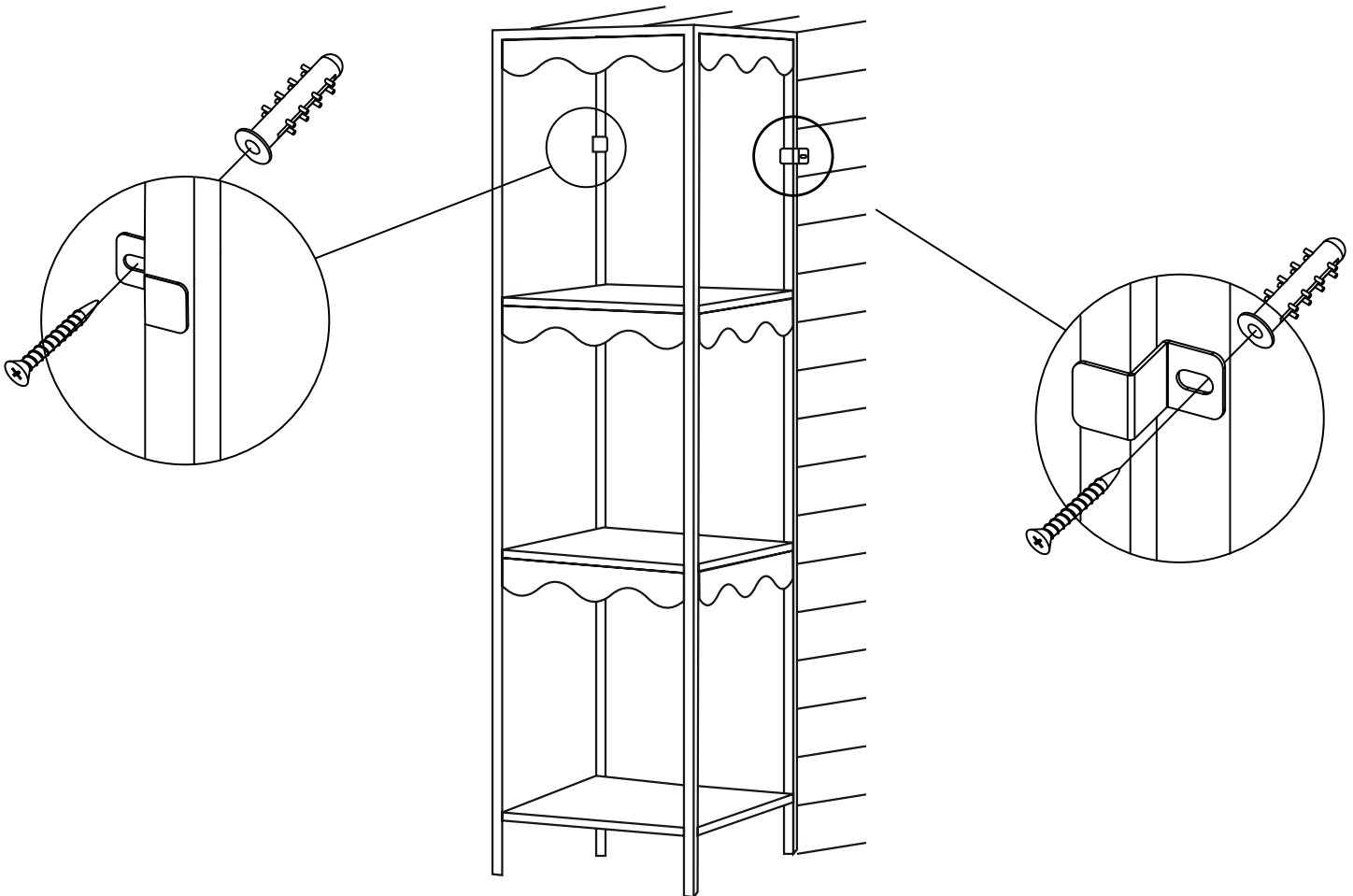
Place the shelf against the wall in its desired location then, place the anti-tip bracket (H) on the wall below the top shelf, as shown, and mark the location of the holes in the anti-tip bracket (H) on the wall.

Wood or Stud Installation:

Insert screws (F) through the anti-tip bracket (H) into the wall and tighten with a Phillips head screwdriver.

Drywall Installation:

Attach the wall anchor (G) to the wall at the marked location using a drill and hammer. Place the anti-tip bracket (H) on the wall securing the shelf, as shown. Insert screws (F) through the anti-tip bracket (H) into the wall anchor (G) and tighten with a Phillips head screwdriver.



Warning: Young children may be injured by tipping furniture and the use of a tipping restraint is highly recommended. The tipping restraint is only a deterrent it is not a substitute for proper adult supervision.