

# PALM FLUSHMOUNT PENDANT

URBAN OUTFITTERS

## Assembly Instructions

### TOOLS REQUIRED BUT NOT INCLUDED:

PHillips head screwdriver / Drillscrew driver, Wire Cutters, Electrical Tape

### WARNINGS:

Do not throw away packing materials and carton until after assembly.

Assemble all parts on a clean smooth surface.

Contact customer service immediately if parts are missing.

**A licensed professional electrician should install direct wire fixtures.**

**Use a Bulb Base E26, Max 60W**

**Do not use bulb that exceeds recommended wattage.**

### CARE INSTRUCTIONS:

Avoid direct exposure to sunlight.

Do not place over heat or Air conditioning vents.

Dust your wood furniture often to prevent the buildup of dust.

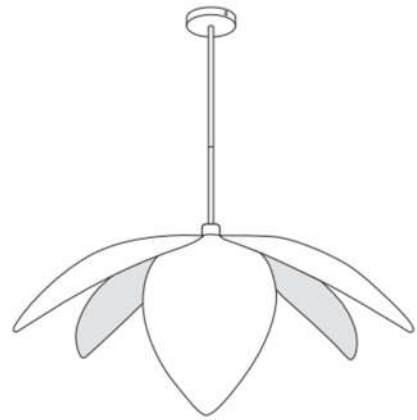
Blot spills do not rub, with a clean white cloth.

Before cleaning any part test a small spot in a hidden area.

Natural Fiber products are designed to be used under cover.

Clean spills with a damp cloth with warm water only.

Do not use any harsh chemicals, abrasive cleaners or silicone or alcohol-based agents on woven materials.



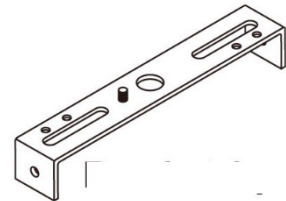
### PARTS INCLUDED:



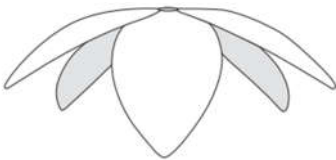
(A) Mounting Screws  
[3 x 18 mm] x2



(B) Canopy Screws  
[3 x 12 mm]" x2



(C) Mounting Bracket  
x1



(D) Shade



(E) Plastic Wire connectors x 3



(F) Stem



(G) Shade Ring

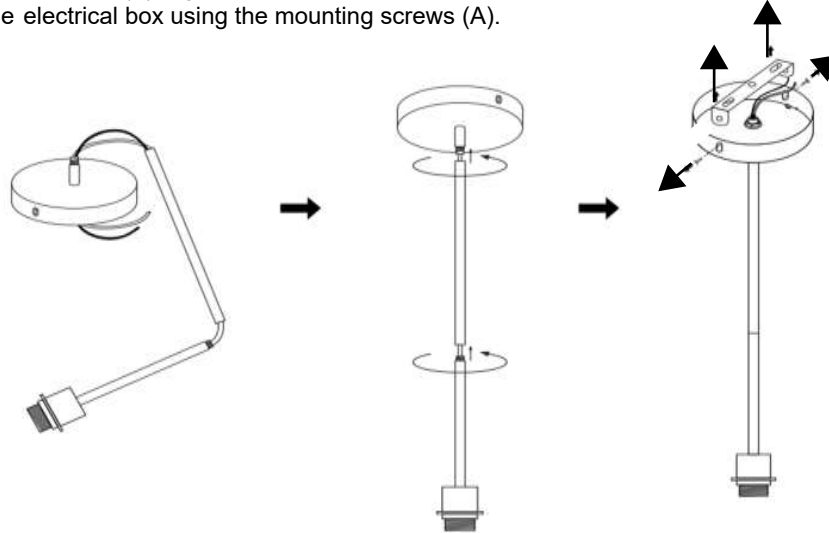
# PALM FLUSHMOUNT PENDANT

URBAN OUTFITTERS

## Assembly Instructions

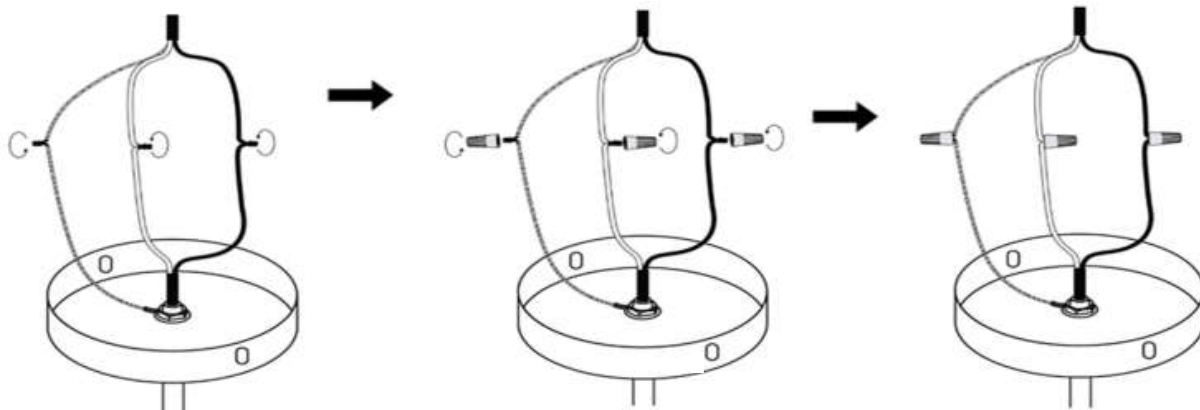
### STEP 1

Ensure the power to the wire in the existing electrical box to be used is shut off. Use a Phillips head screwdriver or drill to remove the canopy screws (B) attaching the mounting bracket (C) to the stem (F). Pull the slack wire through the top of the stem (F) then, screw the stem (F) together counter-clockwise. Use a Phillips head screwdriver or drill to attach the mounting bracket (C) to the electrical box using the mounting screws (A).



### STEP 2

Wrap the existing uncoated copper ground wire around the green ground screw pre-attached to the mounting bracket (C) and tighten the screw with a Phillips head screwdriver or drill. Connect the fixture ground wire and the end of the existing uncoated copper ground wire with a plastic wire connector (E) then, wrap the connection with electrical tape. Next, verify the existing hot (usually black) and neutral wire (usually white). You may need to restore the power in order to verify. Connect the existing neutral wire to the neutral wire of the fixture with a plastic wire connector (C) then, wrap the connection with the electrical tape. Connect the existing hot wire to the hot wire of the fixture with a plastic wire connector (C) then, wrap the connection with the electrical tape. Be sure no strands of wire are exposed for all connections. **Do not reverse the hot and neutral connections. A licensed professional electrician should install direct wire fixtures.**



# PALM FLUSHMOUNT PENDANT

## Assembly Instructions

URBAN OUTFITTERS

### STEP 3

Remove the shade ring (G) from the stem (F). Tuck the connected wires into the existing electrical box and place the stem (F) over the mounting bracket (C). Insert the canopy screws (B) and tighten with a Phillips head screw driver or drill. Place the shade (D) onto the bottom of the stem (F) and screw the shade ring back onto the stem (F) to secure the shade (D). Screw an E26 base, max 60W bulb into the stem (F). Restore power to the fixture to complete installation.

