

Alva Cabinet

Assembly Instructions

URBAN OUTFITTERS

TOOLS REQUIRED BUT NOT INCLUDED:

Drill, Phillips head screwdriver, Hammer, Pencil

WARNINGS:

Do not discard packing materials and carton until assembly is complete.

Ensure all parts are present before assembly.

Contact customer service if parts are missing.

Assemble on a clean, smooth surface.

Do not over-tighten bolts.

CARE INSTRUCTIONS:

Avoid direct exposure to sunlight.

Do not place over heat or air conditioning vents.

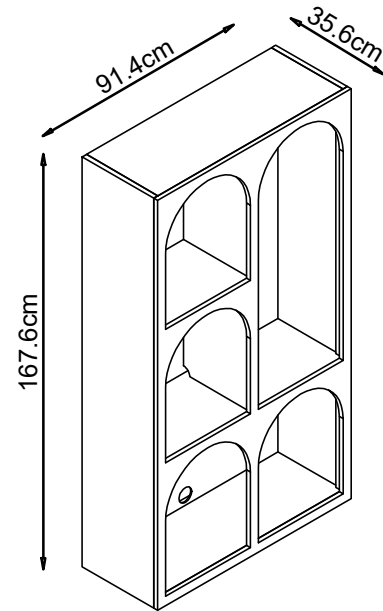
Adjust levelers so that the furniture sits flat on uneven floors.

Blot spills with a clean white cloth, do not rub.

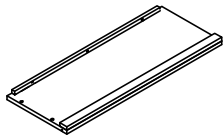
Do not use harsh chemicals.

Before cleaning any part test a small spot in a hidden area.

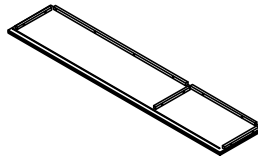
You may need to re-tighten all bolts after initial use.



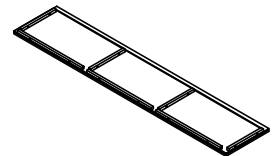
PARTS INCLUDED:



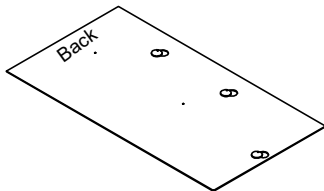
1) Bottom x 1



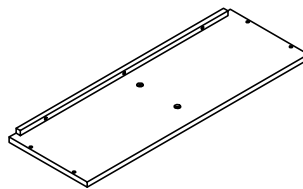
2) Right Side x 1



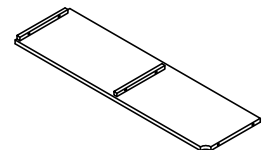
3) Left Side x 1



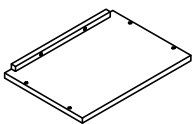
4) Back Panel x 1



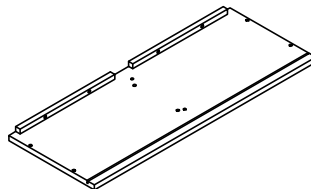
5) Lower Shelf x 1



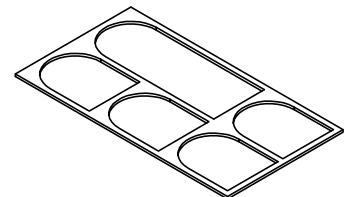
6) Divider x 1



7) Upper Shelf x 1



8) Top Panel x 1



9) Front Frame x 1



A) Bolt
(D 0.47 / 0.24 x 1.18") x 44
or
(D 12 x 30 mm)



B) Spring Washer
(D 0.47 / 0.24 x 0.08") x 45
or
(D 12 / 6 x 2 mm)



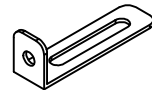
C) Flat Washer
(D 0.55 / 0.24 x 0.08") x 46
or
(D 14 / 6 x 2 mm)



D) Allen Key
(D 0.16 x 2.32") x 1
or
(D 4 x 59 mm)



E) Bolt
(D 0.47 / 0.24 x 0.59") x 1
or
(D 12/6 x 15 mm)



F) L Shaped Metal
(D 2.76 x 0.79 x 0.08") x 1
or
(70 x 20 x 2 mm)



G) Plastic Anchor
(D 0.35 x 1.38") x 1
or
(D 9 x 35 mm)



H) Screw
(D 0.16 x 1.18") x 1
or
(D 4 x 30 mm)



I) Dowel
(D 0.32 x 1.18") x 8
or
(D 8 x 30 mm)



J) Screw
(D 0.12 x 0.59") x 2
or
(D 3 x 15 mm)

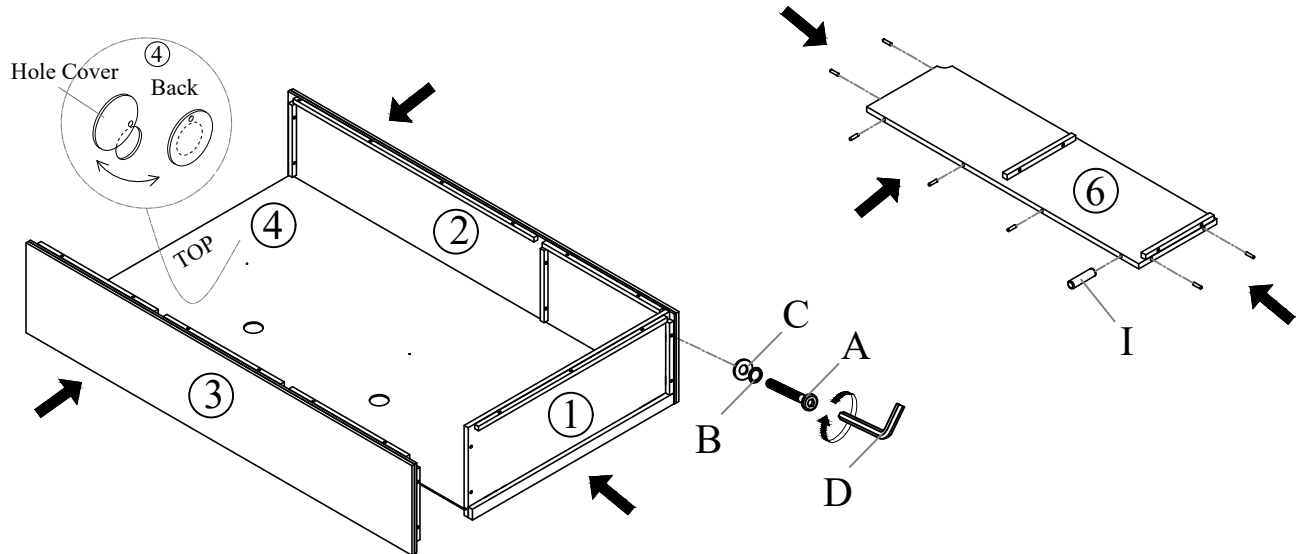
Alva Cabinet

Assembly Instructions

URBAN OUTFITTERS

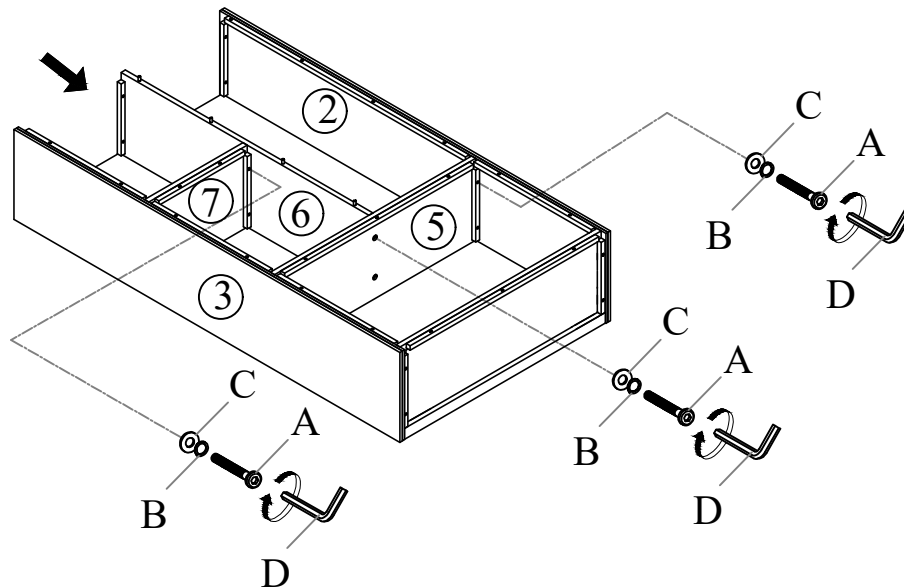
STEP 1

Align the Bottom Panel (1) with the Right Side Panel (2) and Left Side Panel (3). Insert Bolts (A), Spring Washers (B), and Flat Washers (C), and partially tighten using the Allen Key (D). Slide the Back Panel (4) into the grooves in the Sides (2 & 3) and the Bottom (1). Fully tighten the Bolts (A). Insert 8 Dowels (I) into the Divider (6).



STEP 2

Align the Lower Shelf (5) with the Right Side Panel (2) and Left Side Panel (3). Align the Divider (6) with the Lower Shelf (5). Align the Upper Shelf (7) with the Divider (6) and Left Side Panel (3). Insert Bolts (A), Spring Washers (B), and Flat Washers (C), and partially tighten using the Allen Key (D). Once all Bolts (A) are inserted and partially tightened, fully tighten them.



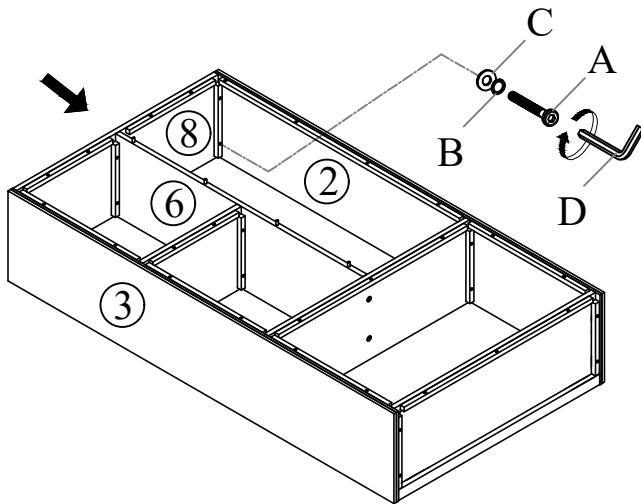
Alva Cabinet

Assembly Instructions

URBAN OUTFITTERS

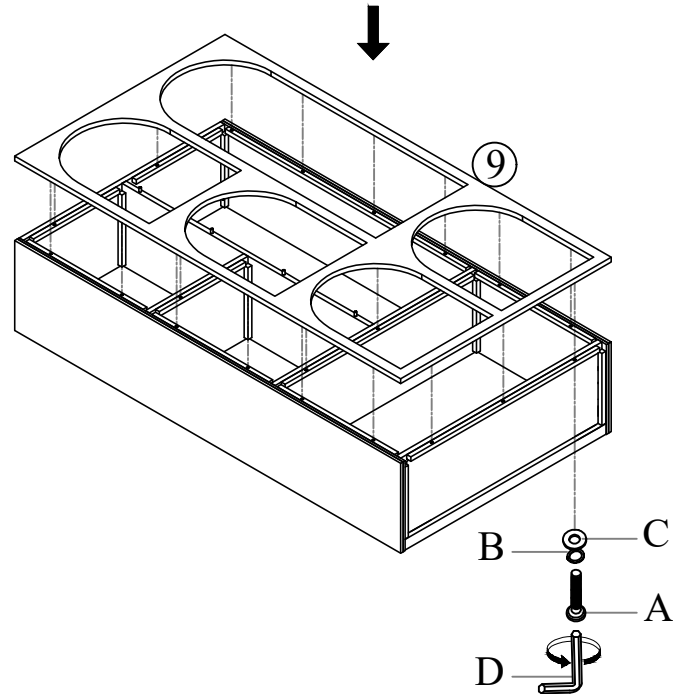
STEP 3

Attach the Top Panel (8) to the Right Side Panel (2), Left Side Panel (3), and Divider (6) with Bolts (A), Spring Washers (B), and Flat Washers (C), using the Allen Key (D).



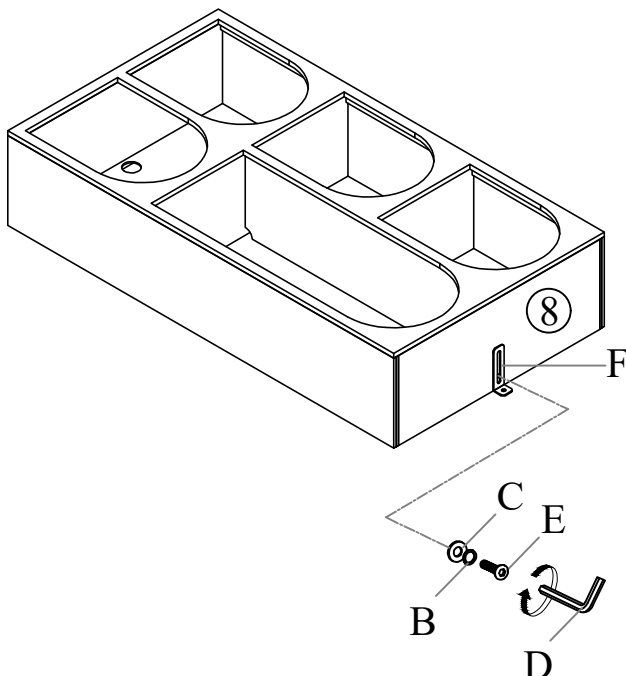
STEP 4

Place the Front Frame (9) on the partially assembled cabinet. Insert Bolts (A), Spring Washers (B), and Flat Washers (C), and partially tighten using the Allen Key (D). Once all Bolts (A) are inserted and partially tightened, fully tighten them.



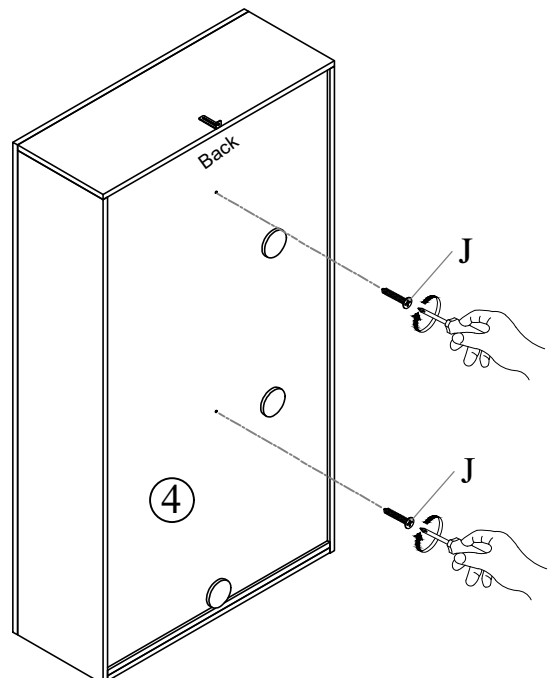
STEP 5

Attach the L-Shaped Metal Bracket (F) to the Top Panel (8) with Bolt (E), Spring Washer (B), and Flat Washer (C), using the Allen Key (D). Flip the cabinet upright.



STEP 6

Attach the Back Panel (4) to the Divider (6) with 2 Screws (J), using the Screwdriver as shown.



Alva Cabinet

Assembly Instructions

URBAN OUTFITTERS

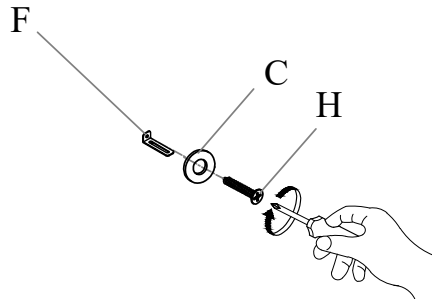
STEP 7

Place the cabinet against the wall in the preferred location.

STEP 8

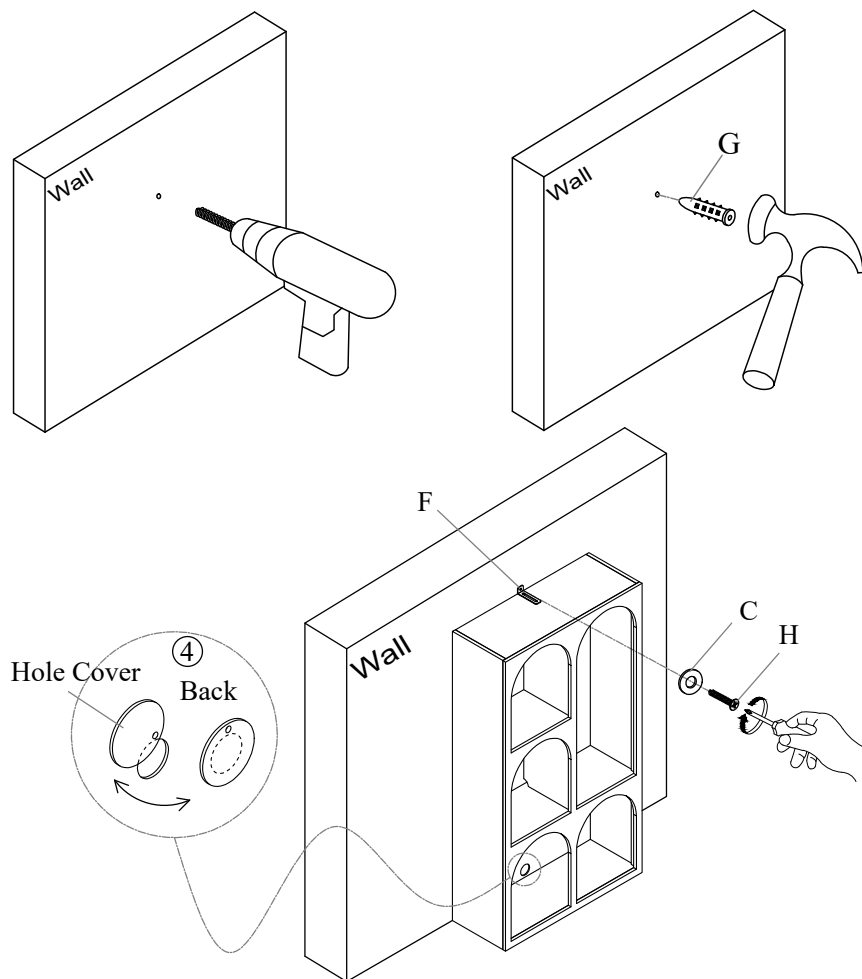
Wood or Stud Installation:

Ensure the cabinet is level. Insert Screw (H) through the Flat Washer (C) and L-Shaped Metal Bracket (F) into the wall. Tighten with a Phillips head screwdriver or drill.



Drywall Installation:

Ensure the cabinet is level and mark the location of the mounting hole in the L-Shaped Metal Bracket (F) on the wall. Remove the cabinet from the wall, with help. Attach the Plastic Anchor (G) to the wall at the marked location using a drill and hammer. With help, place the cabinet back over the Plastic Anchor (G) and insert Screw (H) with Flat Washer (C). Tighten with a drill or Phillips head screwdriver.



The included hardware is intended for attachment to drywall or wooden wall surfaces, contact your local hardware store to find the correct anchor for alternative wall-types such as stone or brick.