

SILAS COFFEE TABLE

URBAN OUTFITTERS

Assembly Instructions

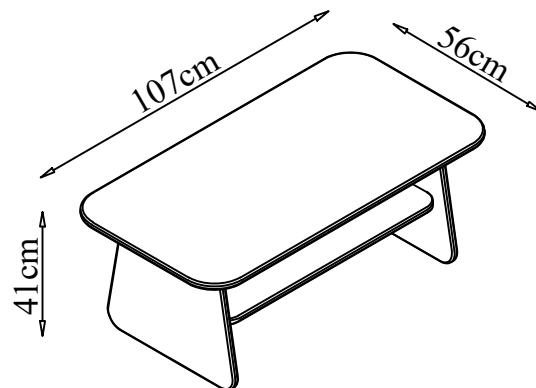
TOOLS REQUIRED BUT NOT INCLUDED:

WARNINGS:

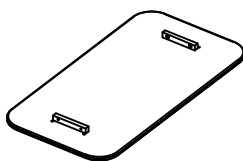
Do not throw away packing materials and carton until after assembly.
Assemble all parts on a clean smooth surface

CARE INSTRUCTIONS:

Avoid direct exposure to sunlight. Do not place overheat or air conditioning vents. Adjust levelers so that the furniture sits flat on uneven floors. Blot spills do not rub, with a clean white cloth.
Do not use harsh chemicals.
Before cleaning any part test a small spot in a hidden area.
You may need to re-tighten all bolts after initial use.



PARTS INCLUDED:



1) Table Top
(42 x 22 x 1.5") x 1
or
107 x 56 x 3.8 cm



2) Leg
(18.7 x 15.4 x 0.7") x 2
or
47.6 x 39.2 x 1.8 cm



3) Shelf
(31.5 x 15 x 1.5") x 1
or
80 x 38 x 3.8 cm



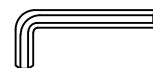
A) Bolt
(D 0.47 / 0.24 x 1.18") x16
or
(D 12 / 6 x 30 mm)



B) Spring Washer
(D 0.47 / 0.24 x 0.08") x16
or
(D 12 x 6 x 2 mm)



C) Flat Washer
(D 0.63 / 0.24 x 0.08") x16
or
(D 16 x 6 x 2 mm)



D) Allen Key
(D 0.16 x 2.32") x1
or
(D 4 x 59 mm)

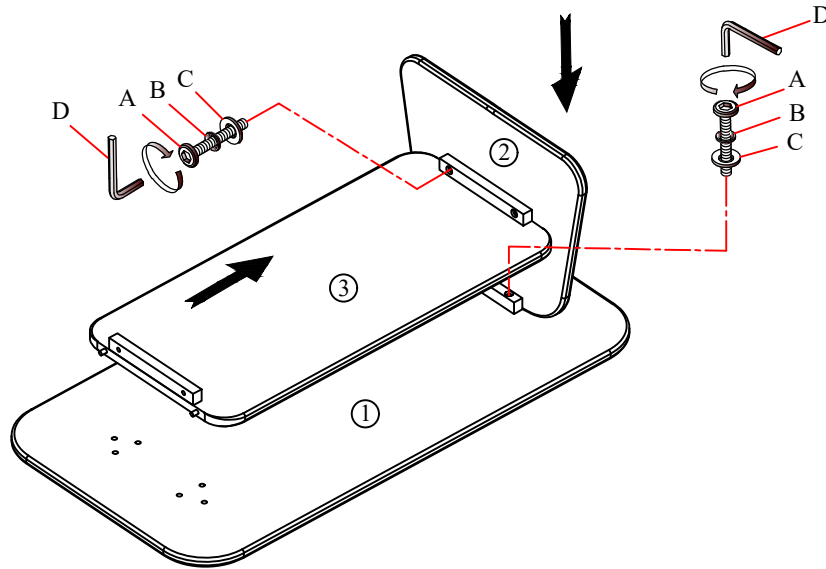
SILAS COFFEE TABLE

URBAN OUTFITTERS

Assembly Instructions

STEP 1

Place the leg (2) into the table top (1) then insert bolt (A), split washer (B) and washer (C) as shown. Tighten with Allen key (D). Place the shelf (3) into the leg (2) and insert bolt (A), split washer (B) and washer (C) as shown. Tighten with Allen key (D).



STEP 3

Repeat Step (1) to attach the additional leg (2). With help, flip over the coffee table to complete assembly.

