

Bow Headboard

URBAN OUTFITTERS

Assembly Instructions

TOOLS REQUIRED BUT NOT INCLUDED:

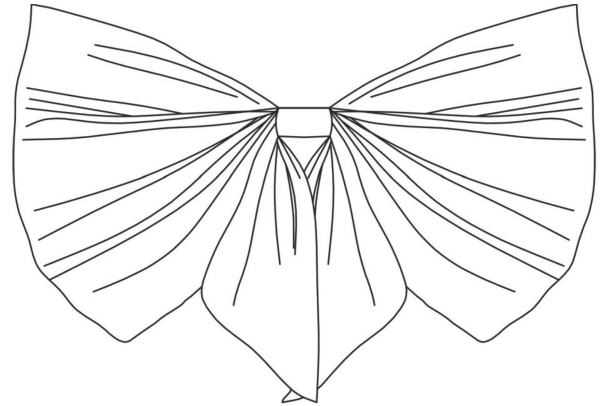
Drill, Phillips head screwdriver, Hammer, Pencil, Level

WARNINGS:

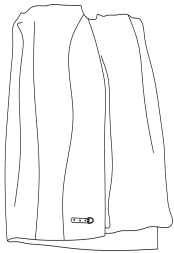
Do not throw away packing materials and carton until after assembly.
Ensure all parts are present prior to assembly.
Contact customer service immediately if parts are missing.
Assemble all parts on a clean smooth surface.

CARE INSTRUCTIONS:

Avoid direct exposure to sunlight.
Do not place over heat or air conditioning vents.
Adjust levelers so that the furniture sits flat on uneven floors.
Blot spills with a clean white cloth, do not rub.
Do not use harsh chemicals.
Before cleaning any part test a small spot in a hidden area.
You may need to re-tighten all bolts after initial use.



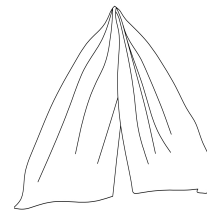
PARTS INCLUDED:



(A) Bow



(B) Strap



(C) Ribbon



(D) Wall Anchor
[1.5"] x2



(E) Screw
[1.5"] x2

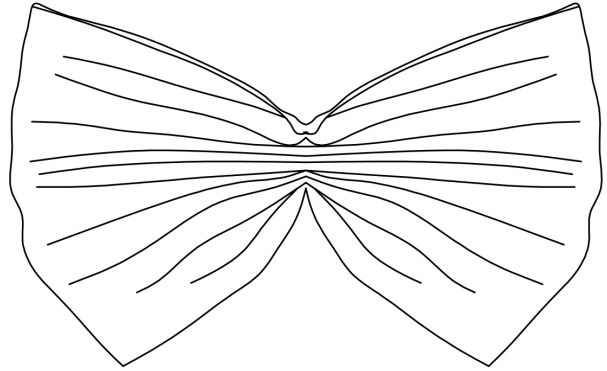
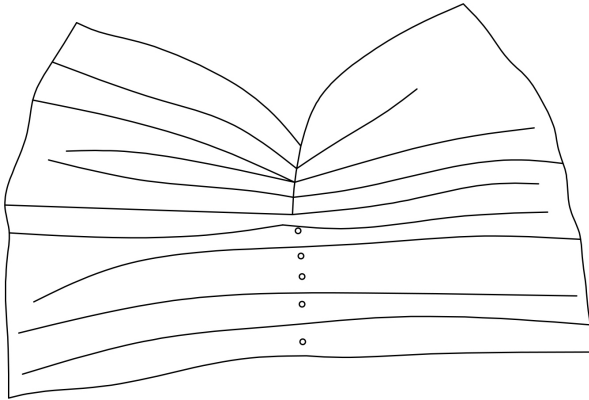
Bow Headboard

URBAN OUTFITTERS

Assembly Instructions

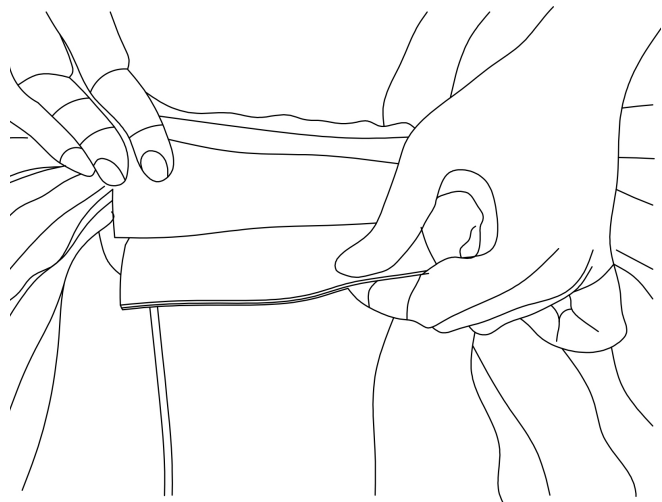
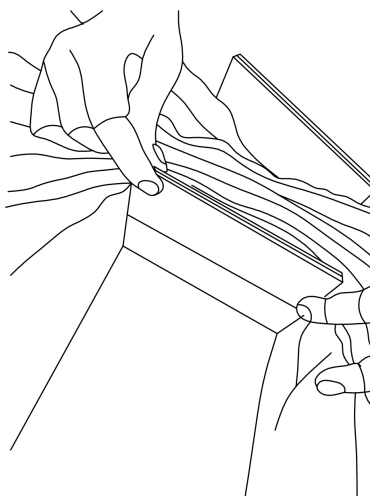
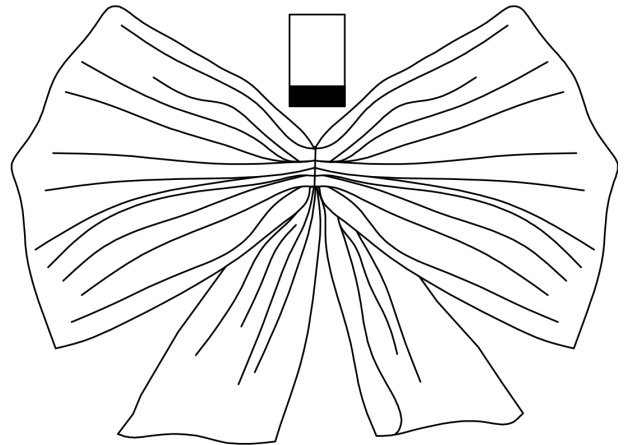
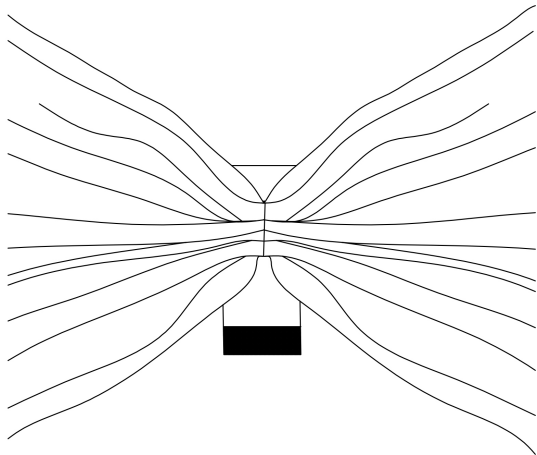
STEP 1

Connect the snaps at the center of the Bow (A) to form its shape.



STEP 2

Place the Ribbon (B) below the Bow (A) and connect the parts by wrapping the strap (C) around each. See images below for reference.



Bow Headboard

URBAN OUTFITTERS

Assembly Instructions

STEP 3

Lay the bow upside down as you would like it to hang on the wall. Measure the distance between the D-rings on the back of the headboard then, mark their location on the wall in the preferred position of the headboard. Ensure the marks are level.

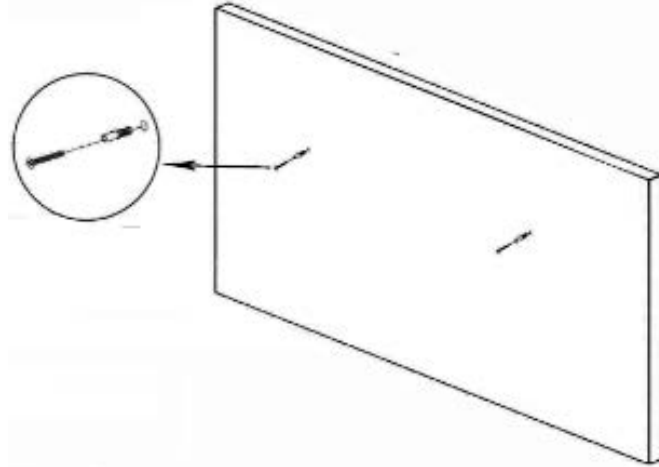
Wood or Stud installation:

Use a Phillips head screwdriver to fasten the screws (E) directly into the wall at the marked locations. Leave 1/4" of the screw exposed to hang the headboard.

Drywall installation:

Insert anchors (D) into the wall at the marked locations using a drill and a hammer (not included). Insert screws (E) into the anchors, then tighten with a Phillips head screwdriver (not included). Leave 1/4" of the screw exposed to hang the headboard.

\The included hardware is intended for attachment to drywall or wooden wall surfaces, contact your local hardware store to find the correct anchor for alternative wall-types such as stone or brick.



STEP 4

With help hang, the headboard onto screws (E) to complete assembly.

