

CORA LARGE BURL COFFEE TABLE

URBAN OUTFITTERS

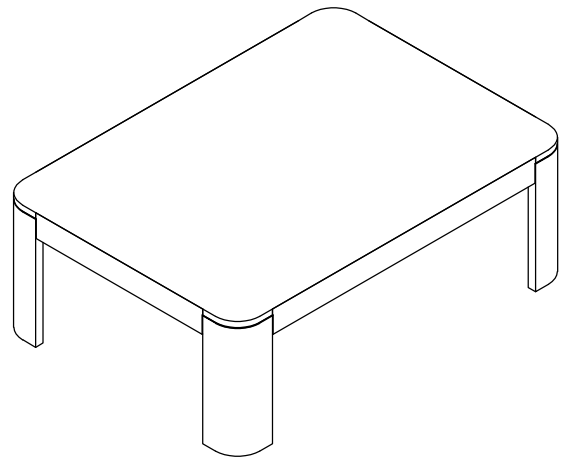
Assembly Instructions

TOOLS REQUIRED BUT NOT INCLUDED: N/A

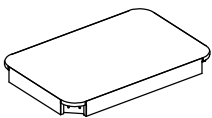
Do not throw away packing materials and carton until after assembly.
Assemble all parts on a clean smooth surface

CARE INSTRUCTIONS:

Avoid direct exposure to sunlight. Do not place over heat or Air conditioning vents.
Adjust levelers so that the furniture sits flat on uneven floors.
Blot spills do not rub, with a clean white cloth.
Do not use harsh chemicals.
Before cleaning any part test a small spot in a hidden area.
You may need to re-tighten all bolts after initial use.



PARTS INCLUDED



(A) Table Top x1



(B) Legs x4

HARDWARE LIST



(1) Allen bolt
[M8 x 65mm] x8



(2) Spring Washers
[M8] x8



(3) Flat Washers
[M8] x8



(4) Allen key
x1

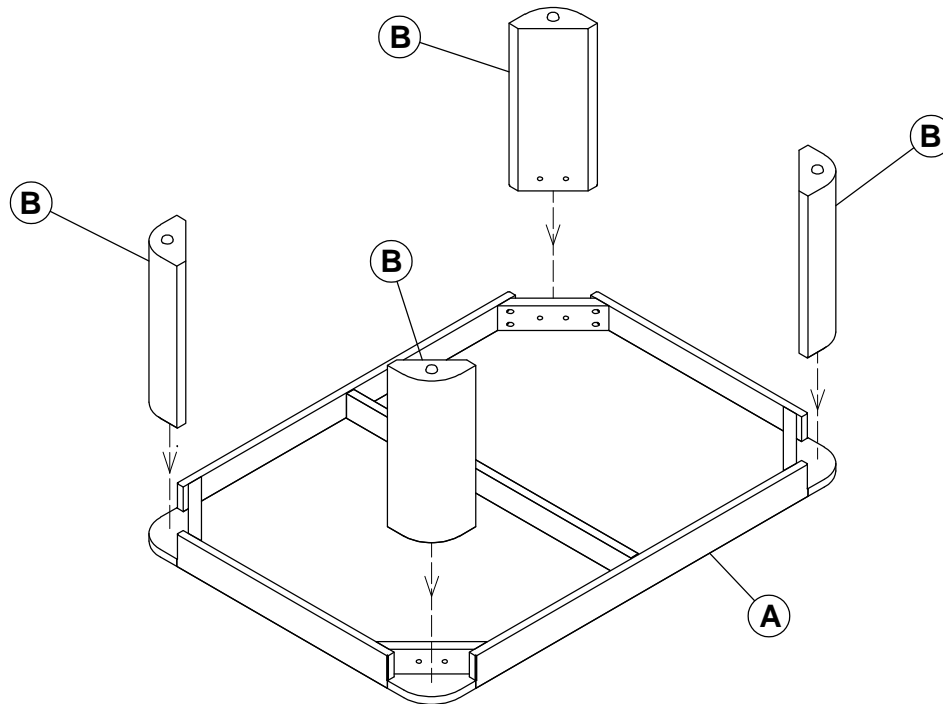
CORA LARGE BURL COFFEE TABLE

URBAN OUTFITTERS

Assembly Instructions

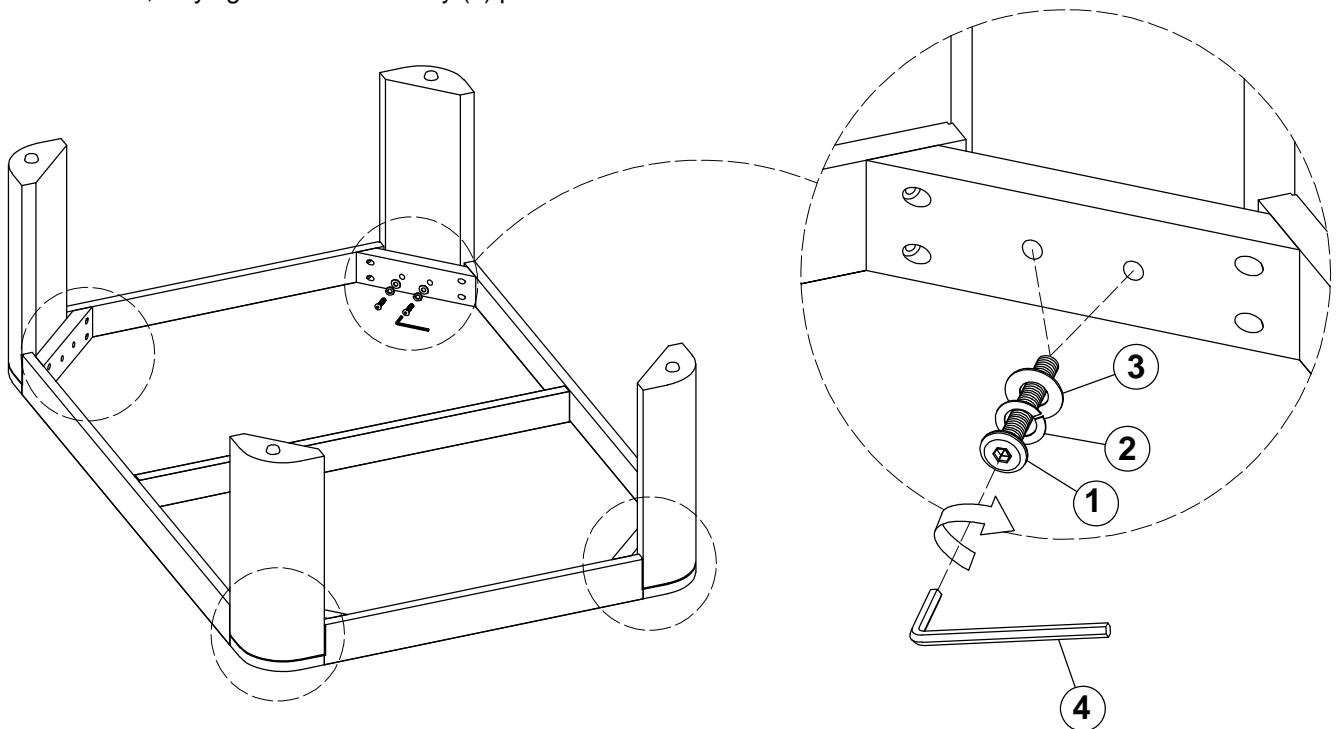
STEP 1

Find a clear area for assembly, near where you intend to use the coffee table. Place the table top (A) upside down on a soft surface. Then, place legs (B) upside down into the table top as shown.



STEP 2

Insert the Allen bolts (1), Spring Washers (2) and Flat Washers (3) as shown and tighten partially. Then, fully tighten with Allen key (4) provided.



CORA LARGE BURL COFFEE TABLE

URBAN OUTFITTERS

Assembly Instructions

FINISH

