

HW : 4 INSTAX HOOK

URBAN OUTFITTERS

Assembly Instructions

TOOLS REQUIRED BUT NOT INCLUDED:

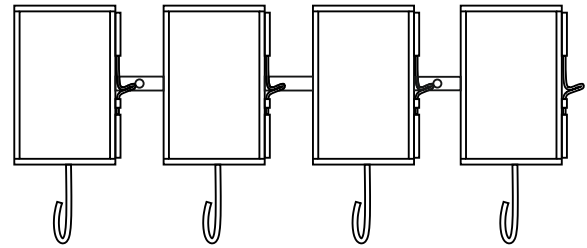
Drill, Phillips head screwdriver, Hammer, Level, Pencil

WARNINGS:

Do not discard packing materials and the carton until assembly is complete.
Ensure all parts are present prior to assembly.
Contact customer service immediately if any parts are missing.
Assemble all parts on a clean, smooth surface.

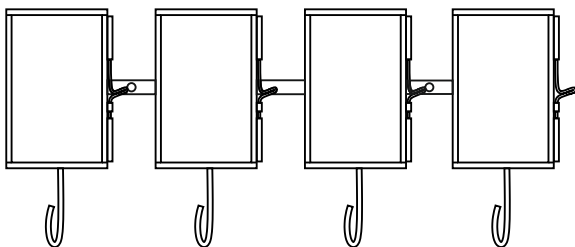
CARE INSTRUCTIONS:

Avoid direct exposure to sunlight.
Blot spills with a clean, white cloth; do not rub.
Do not use harsh chemicals.
Before cleaning any part, test a small spot in a hidden area.
Do not place over heat or air conditioning vents.
Do not over-tighten the parts.
The parts may loosen after initial use; re-tighten as necessary.



PARTS INCLUDED:

The included hardware is intended for attachment to drywall or wooden wall surfaces, contact your local hardware store to find the correct anchor for alternative wall-types such as stone or brick.



(A) 4 Instax Hook



(B) Anchor
(D0.35" x 1.38") x2
or
(D9 x 35 mm) x2



(C) Screws
(D0.31" x 1.45") x2
or
(D8 x 37 mm) x2

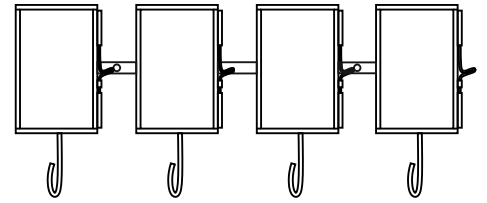
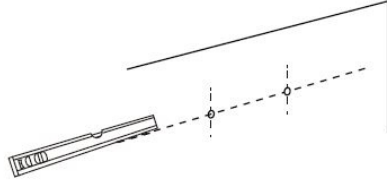
HW : 4 INSTAX HOOK

URBAN OUTFITTERS

Assembly Instructions

STEP 1

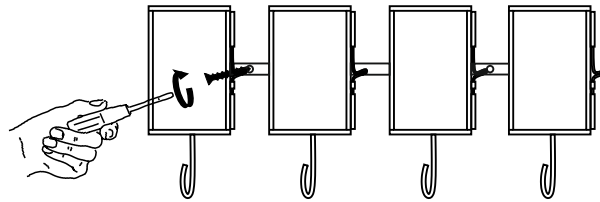
Place the Multi-Hooks (A) on the wall in your chosen location and ensure it is level. Mark the screw locations on the wall.



STEP 2

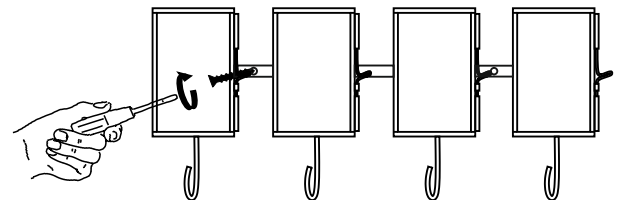
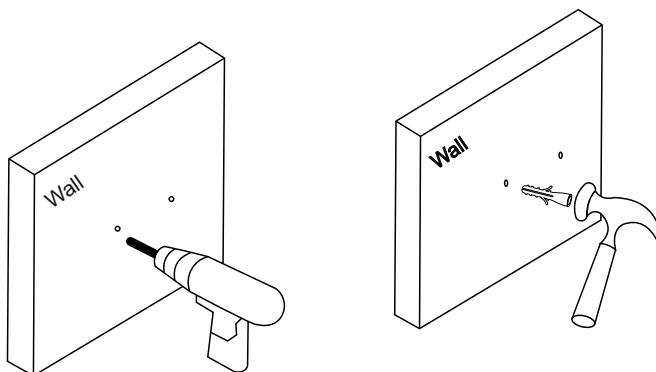
Wood or Stud installation:

Insert the screws (C) through the Multi-Hook (A) into the wall and fasten them with a Phillips head screw driver or drill.



Drywall installation:

Mark the location of the screw holes in the Multi-Hook (A) on the wall. Insert anchors (B) into the wall at the marked locations using a drill and a hammer. Insert screws (C) through the multi-hook (A) into the anchors, then tighten with a Phillips head screw driver.



The included hardware is intended for attachment to drywall or wooden wall surfaces, contact your local hardware store to find the correct anchor for alternative wall-types such as stone or brick.