

# Marnie Entrway Hook

## Assembly Instructions

**URBAN OUTFITTERS**

### TOOLS REQUIRED BUT NOT INCLUDED:

Drill, Phillips head screwdriver driver or bit, Hammer, Pencil

### WARNINGS:

Do not throw away packing materials and carton until after assembly.

Ensure all parts are present prior to assembly.

Contact customer service immediately if parts are missing.

Assemble all parts on a clean smooth surface.

### CARE INSTRUCTIONS:

Avoid direct exposure to sunlight.

Blot spills with a clean, white cloth; do not rub.

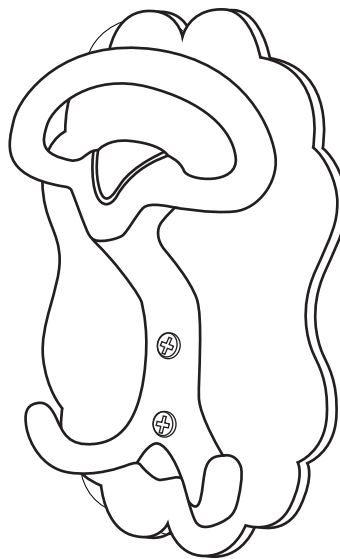
Do not use harsh chemicals.

Before cleaning any part, test a small spot in a hidden area.

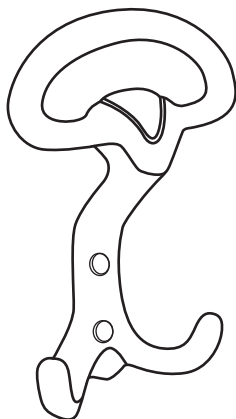
Do not place over heat or air conditioning vents.

Do not over-tighten the parts.

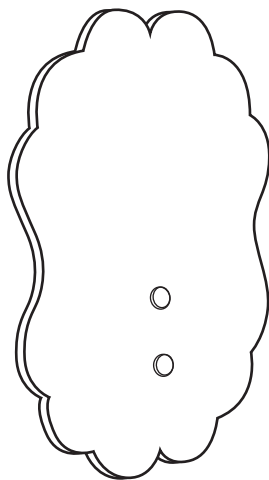
The parts may loosen after initial use; re-tighten as necessary.



### PARTS INCLUDED:



(A) Hook



(B) Resin Plate



(C) Screws  
[M8 x 38mm] x2



(D) Plastic Anchors  
[M10 x 38mm] x2

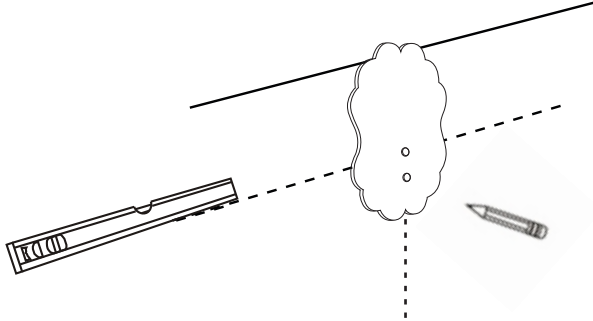
# Marnie Entrway Hook

## Assembly Instructions

URBAN OUTFITTERS

### STEP 1

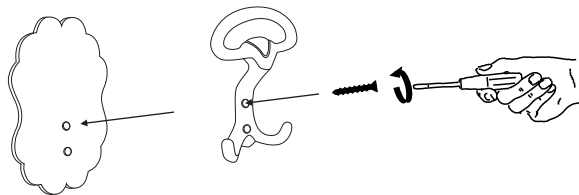
Place the resin plate (B) in the chosen location on the wall and ensure it is level. Mark the location of the holes in the resin plate (B) on the wall with a pencil, then remove it from the wall.



### STEP 2

Stud installation:

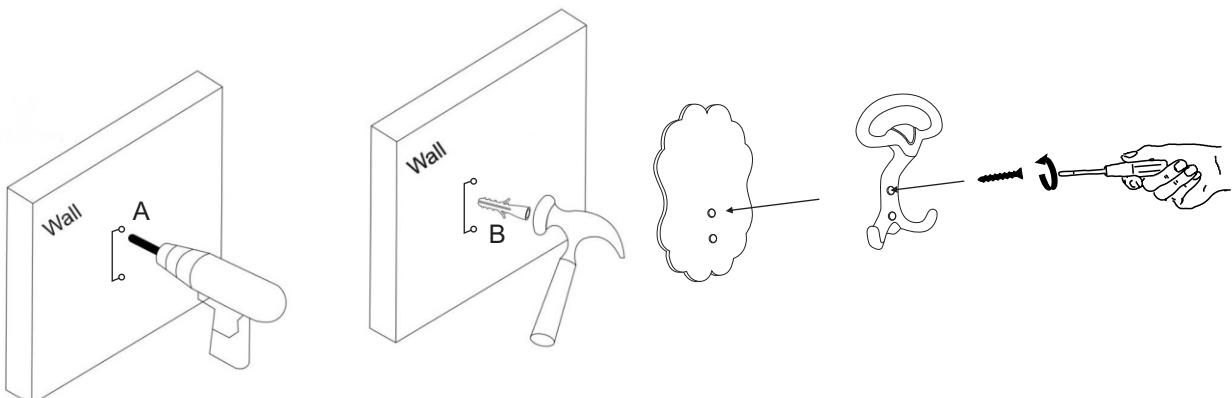
Drill a 1/8" or 3mm hole in the wall at the marked locations. Insert the screws (C) through the hook (A) and resin plate (B) into the wall and fasten them with a Phillips head screwdriver or drill.



### STEP 3

Drywall installation :

Drill a 5/16" or 8 mm hole in the wall at the marked locations. Use a drill and a hammer to insert the plastic anchors (D) into the wall. Insert the screws (C) into the anchor through the hook (A) and resin plate (B), then tighten with a Phillips head screwdriver.



**The included hardware is intended for attachment to drywall or wooden wall surfaces, contact your local hardware store to find the correct anchor for alternative wall-types such as stone or brick.**