

OLLIE MEDIA CONSOLE

URBAN OUTFITTERS

Assembly Instructions

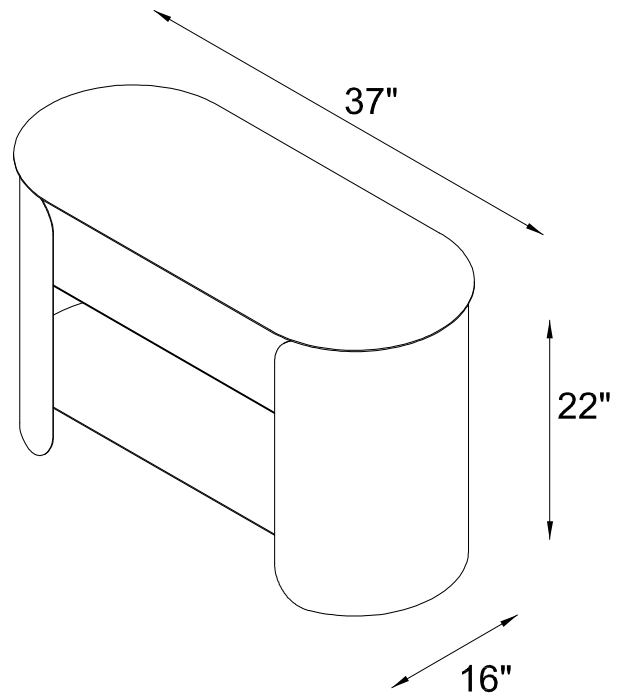
NO ADDITIONAL TOOLS REQUIRED.

WARNINGS:

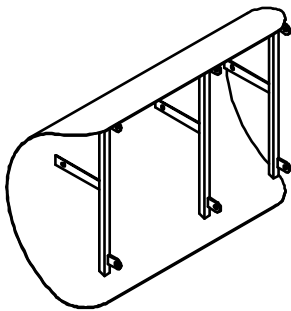
Two people recommended for assembly
Do not discard packing materials and the carton until assembly is complete.
Ensure all parts are present prior to assembly.
Contact customer service immediately if any parts are missing.
Assemble all parts on a clean, smooth surface.

CARE INSTRUCTIONS:

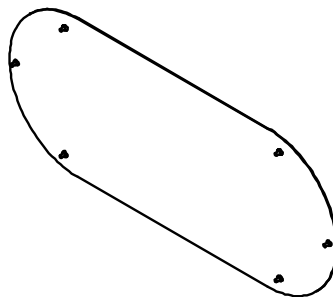
Avoid direct exposure to sunlight.
Blot spills with a clean, white cloth; do not rub.
Do not use harsh chemicals.
Before cleaning any part, test a small spot in a hidden area.
Do not place over heat or air conditioning vents.
Do not over-tighten the parts.
The parts may loosen after initial use; re-tighten as necessary.



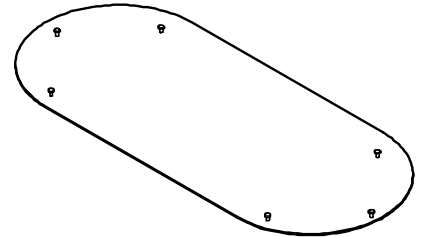
PARTS INCLUDED:



A) Sides x 2



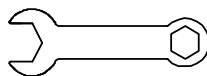
B) Middle and Bottom shelf x 2



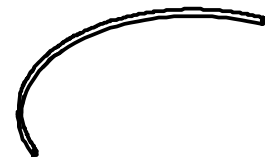
C) Top Metal Shelf



D) Acorn Nut [M6] x 18



E) Wrench [10x85mm]



F) Plastic Strip x 2

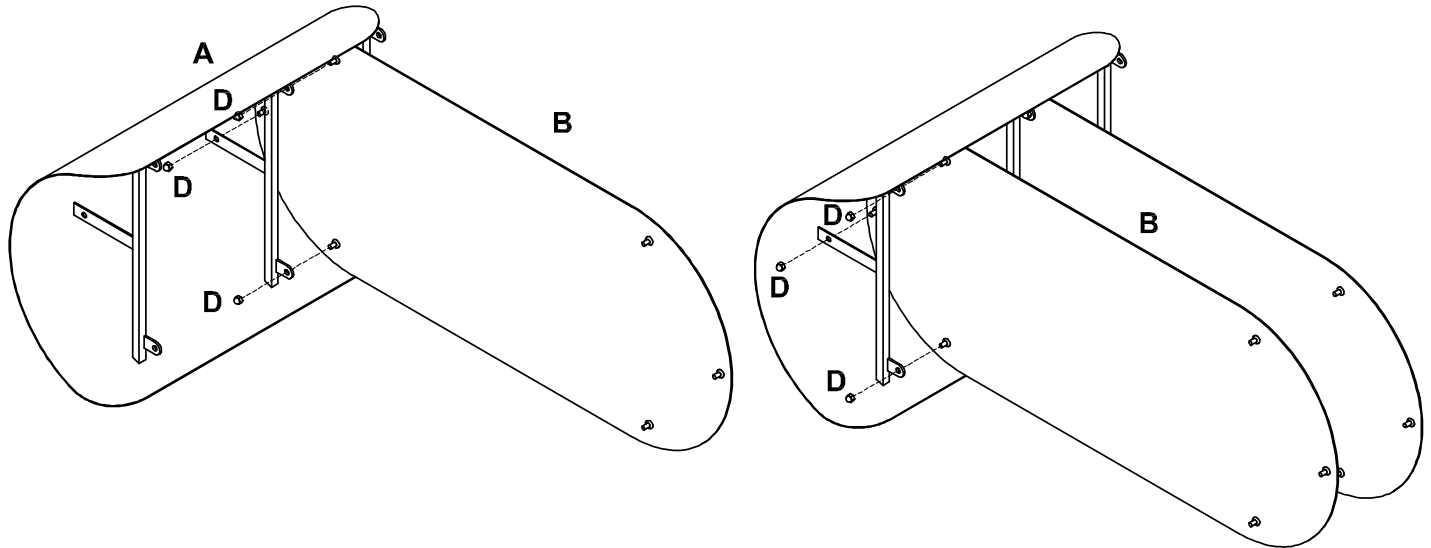
OLLIE MEDIA CONSOLE

Assembly Instructions

URBAN OUTFITTERS

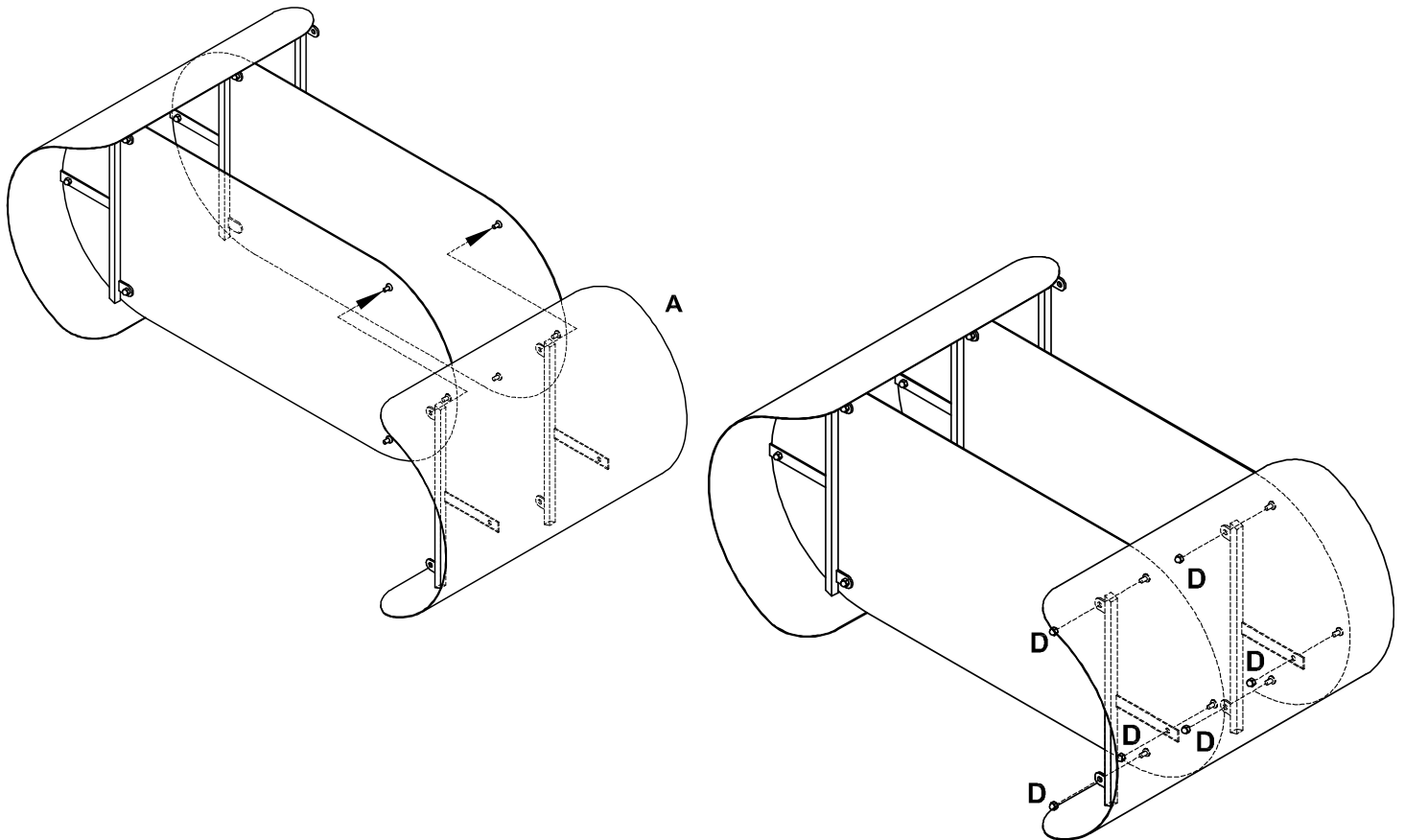
STEP 1

Lay down all the parts on a clean carpet or cardboard for assembly. Align Middle and bottom metal shelf (B) with Side Frame (A), as shown. Insert acorn nut (D) and fully tighten the nuts with wrench (E).



STEP 2

Repeat STEP 1 using the additional Side Frame (A).



OLLIE MEDIA CONSOLE

Assembly Instructions

URBAN OUTFITTERS

STEP 3

With help, flip the table upright. Align table top (C) with the console base as shown. Insert acorn nut (D) and fully tighten the bolts with wrench (E).

